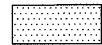


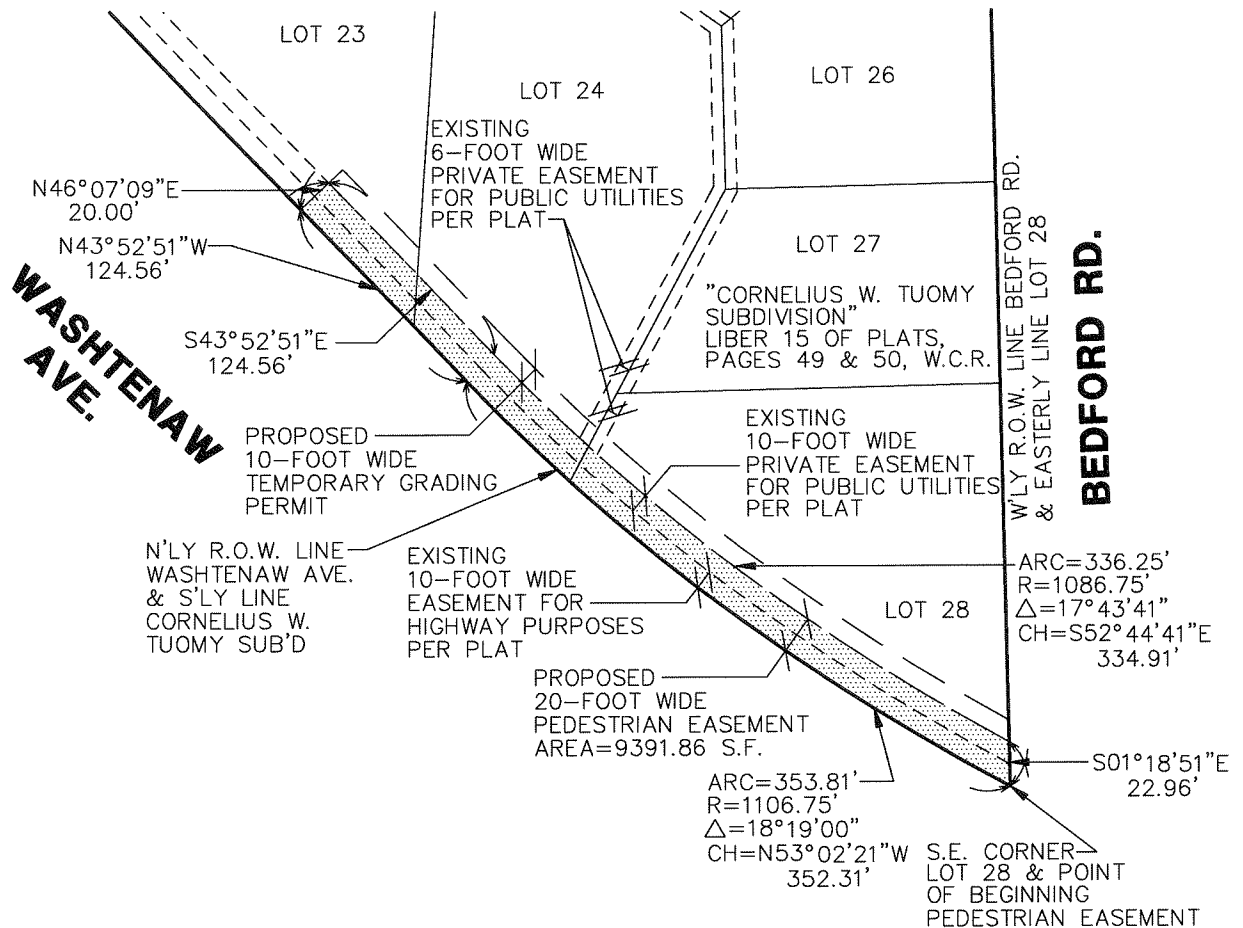
SKETCH OF A PROPOSED PEDESTRIAN EASEMENT LOCATED IN THE SW 1/4 OF SECTION 34, T2S, R6E, CITY OF ANN ARBOR, WASHTENAW COUNTY, MICHIGAN

# LEGEND



R.O.W. RIGHT-OF-WAY

 PROPOSED EASEMENT



06245\_ESMT5.DWG

REV. DATE: 5/06/10

## MIDWESTERN CONSULTING



Civil, Environmental and  
Transportation Engineers  
Planners, Surveyors  
Landscape Architects

3815 Plaza Drive  
Ann Arbor, Michigan 48108  
Phone: 734.995.0200  
Fax 734.995.0599

DATE: 3/27/07

JOB NO.: **06245**

SCALE: 1" = 100



SHEET 1 OF 2