

# Ordinance Revisions Committee

---

TUESDAY, OCTOBER 26, 2021

# TC1 District Maximum Height

---

*Previously...*

September 28, 2021: Three concepts



A. Reduce buffer from 1000' to 600' from R district for 300' maximum height

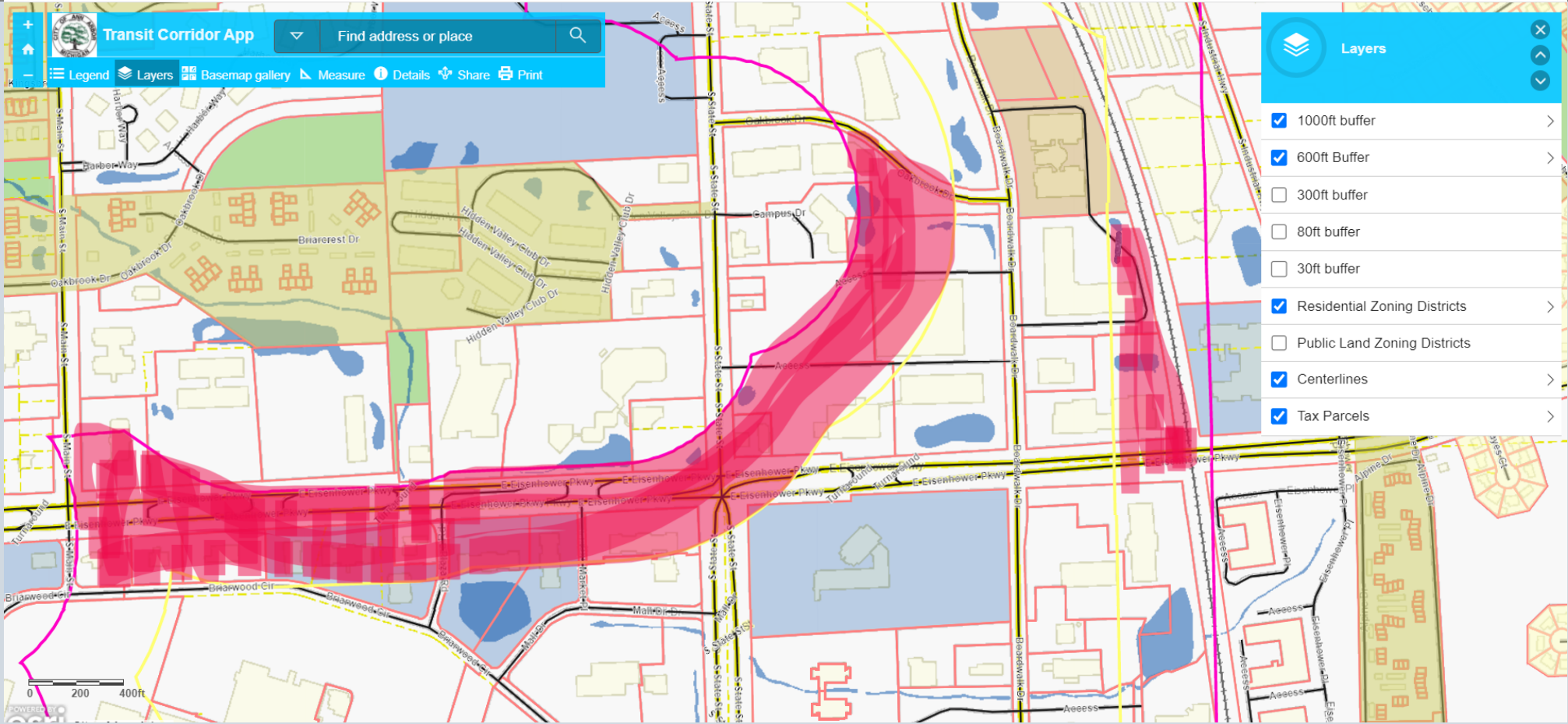


~~B. Buffers do not cross centerlines of public roads~~

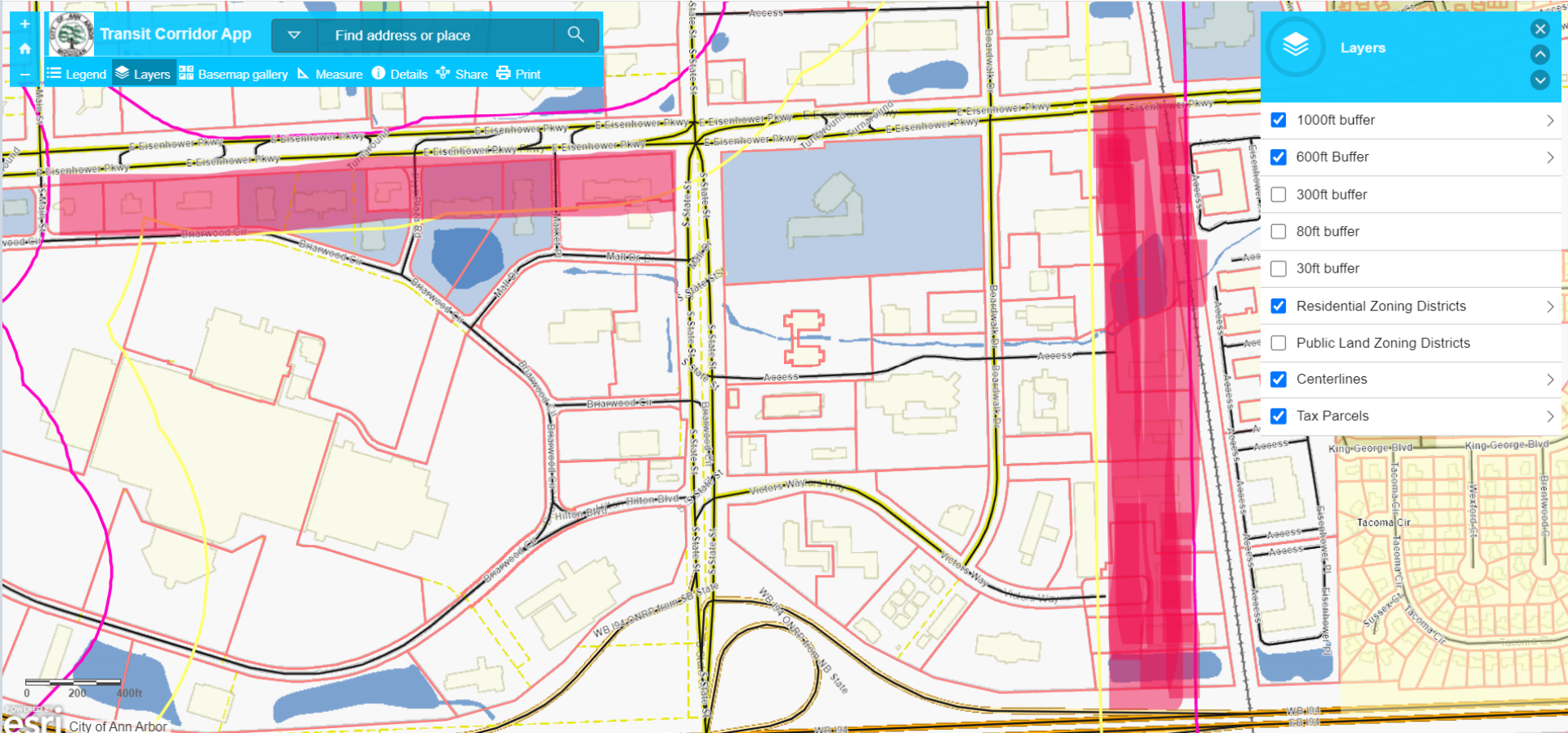


C. Buffers only apply on parcels abutting R district

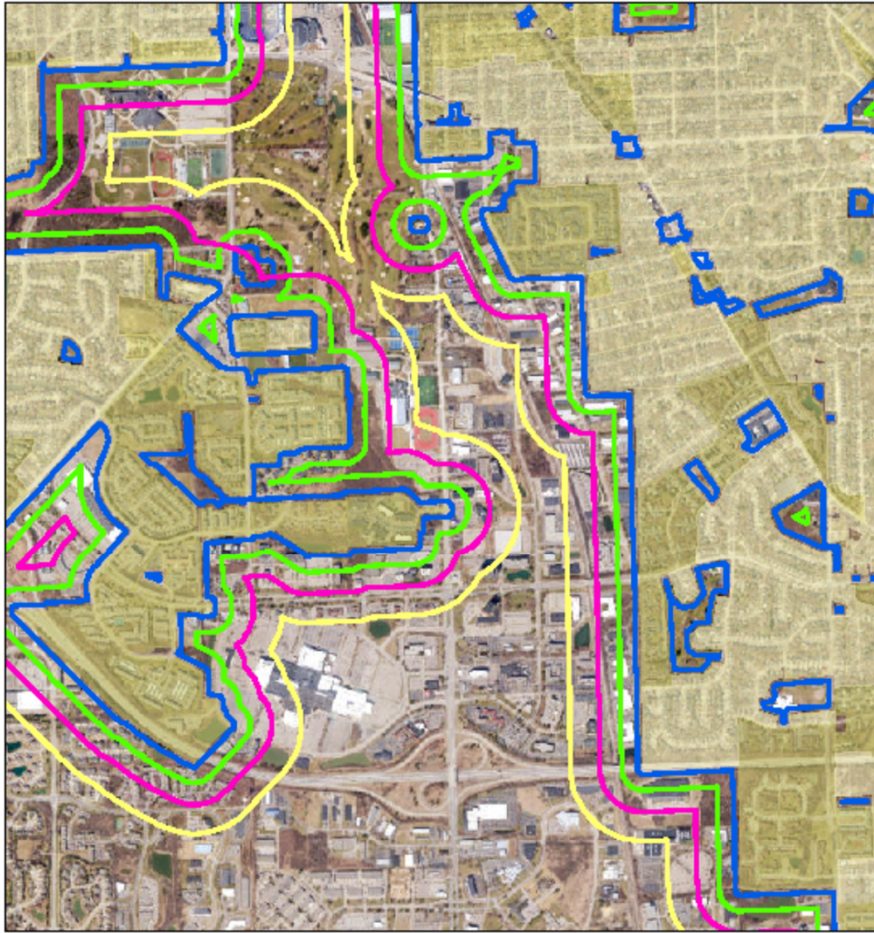
# Concept A: 300' Maximum Height when more than 600' from R district



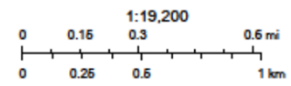
# Concept A: 300' Maximum Height when more than 600' from R district



### State & Eisenhower area

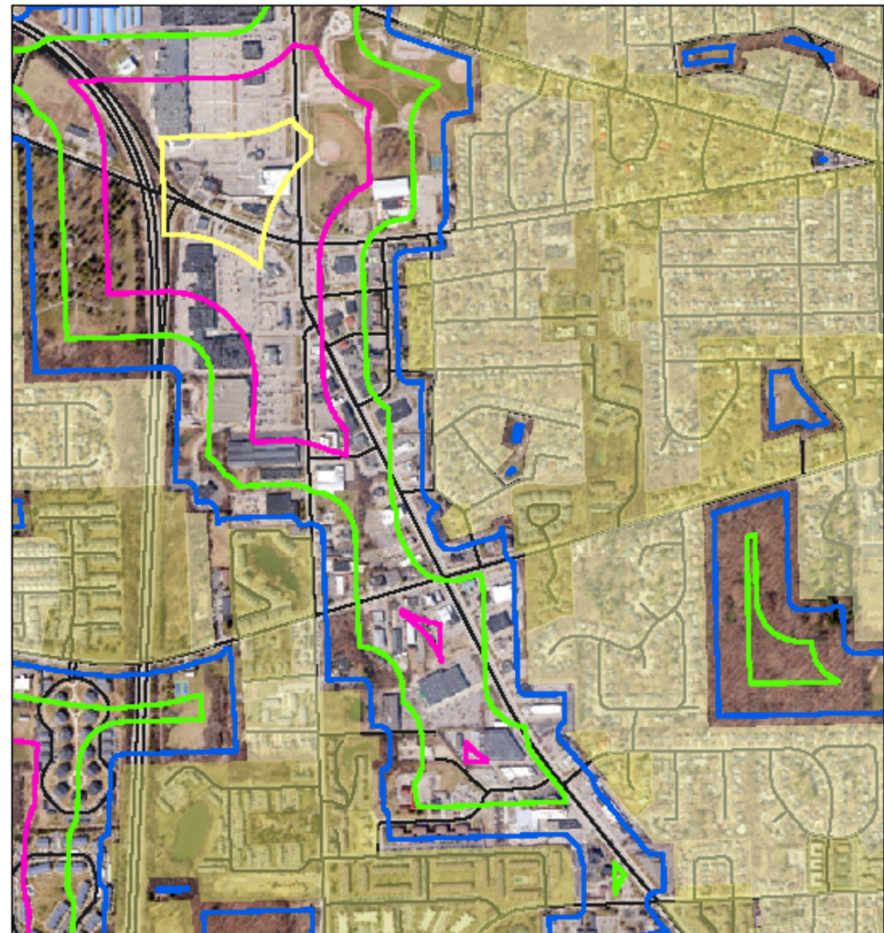


October 20, 2021

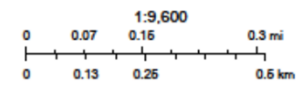


City of Ann Arbor

### Stadium Boulevard area

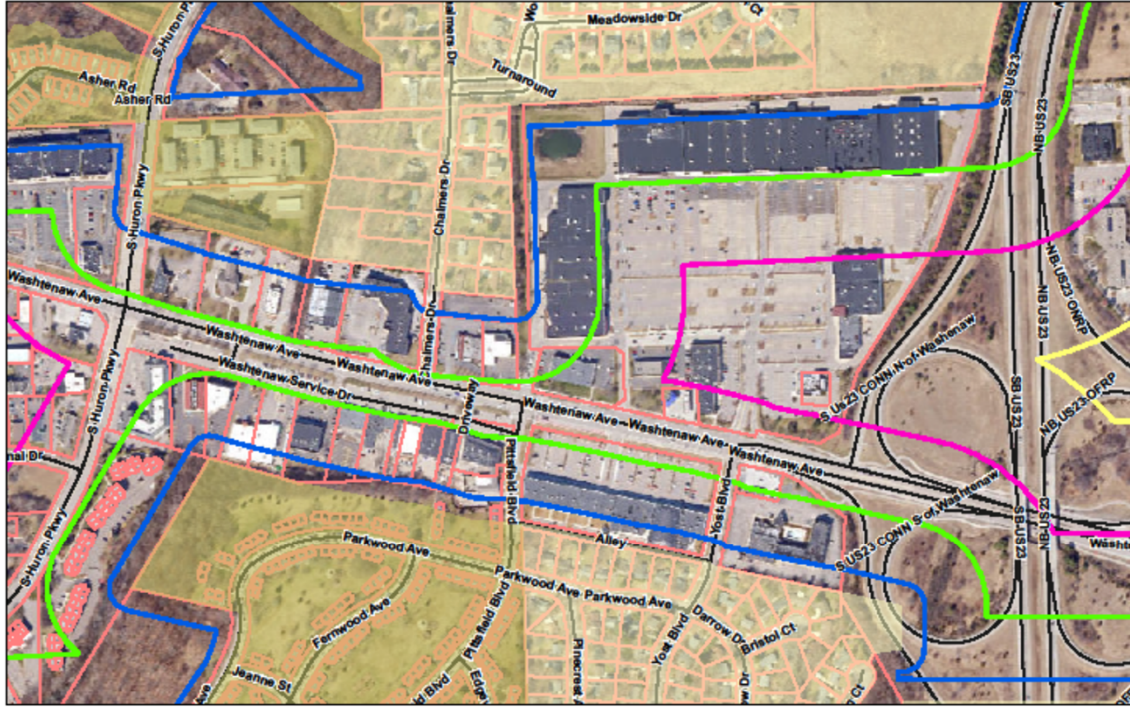


October 20, 2021

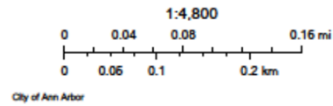


City of Ann Arbor

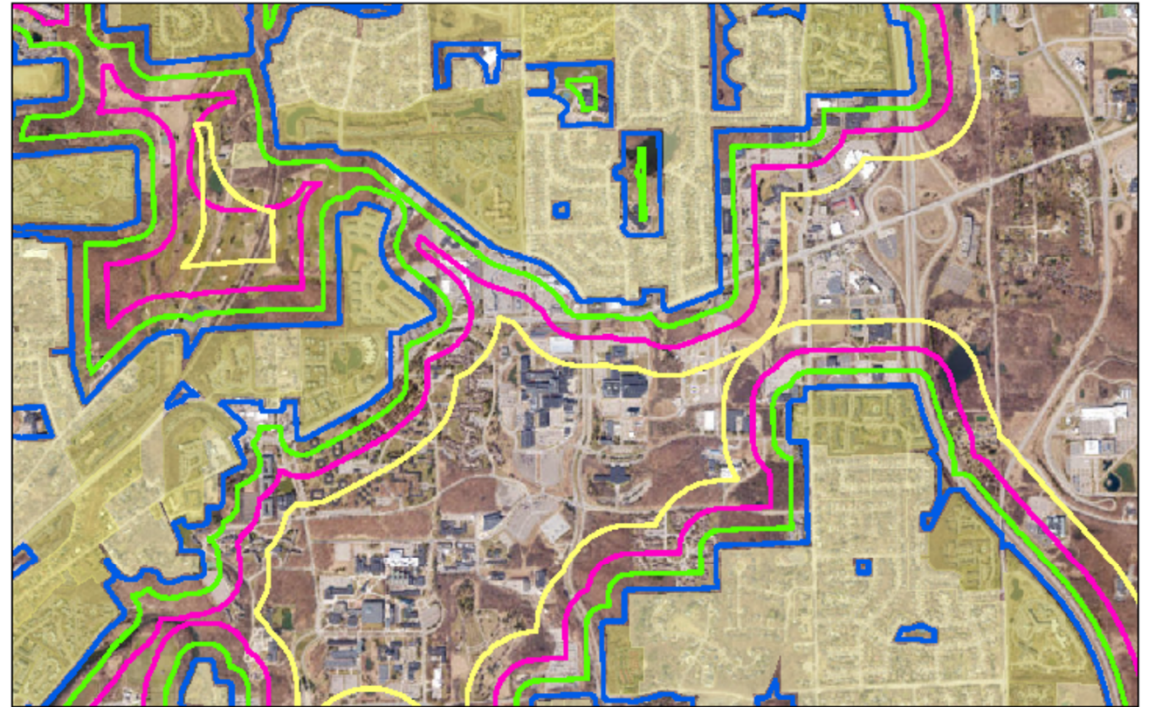
### Washtenaw Ave area



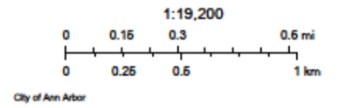
October 20, 2021



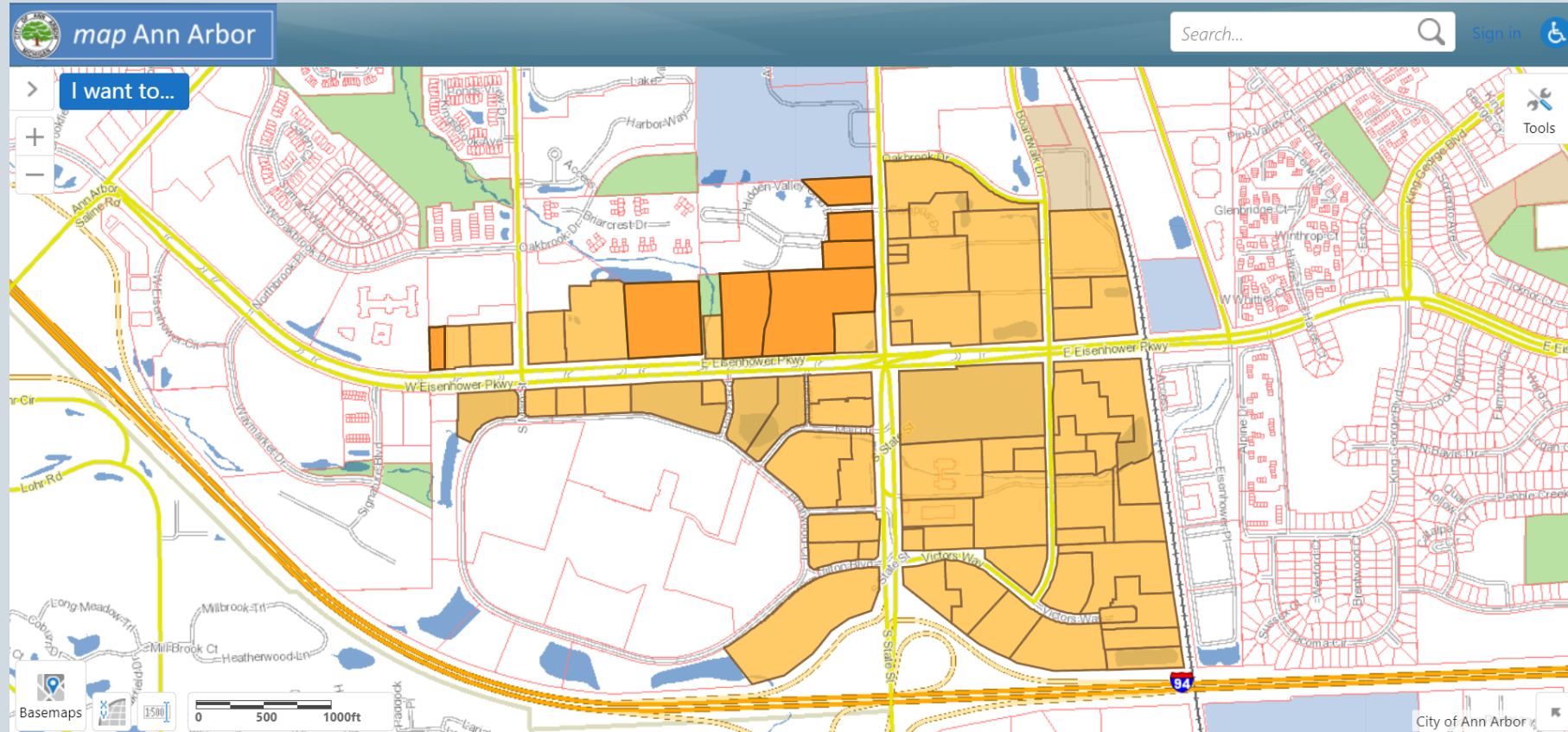
### Plymouth Road area



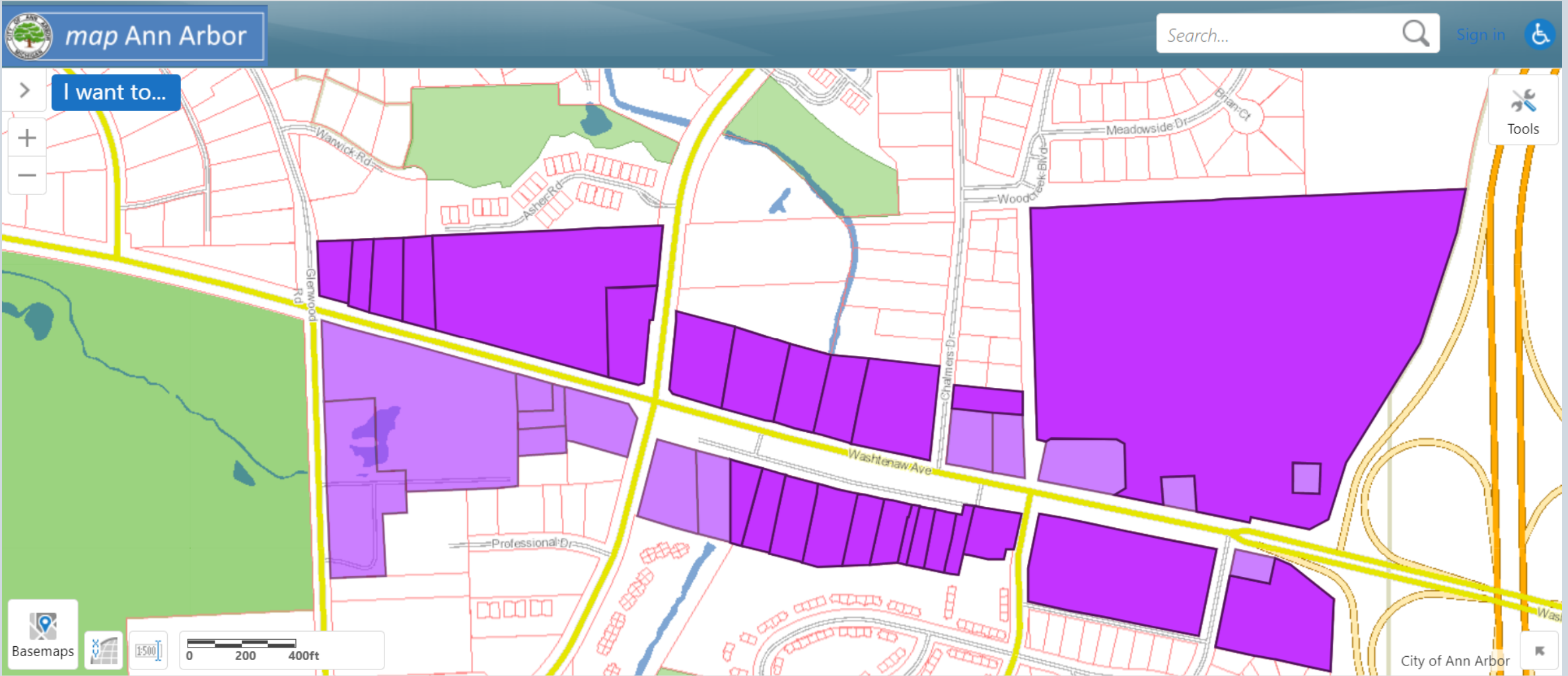
October 20, 2021



# Concept B: Height Limits Apply When Abutting R District

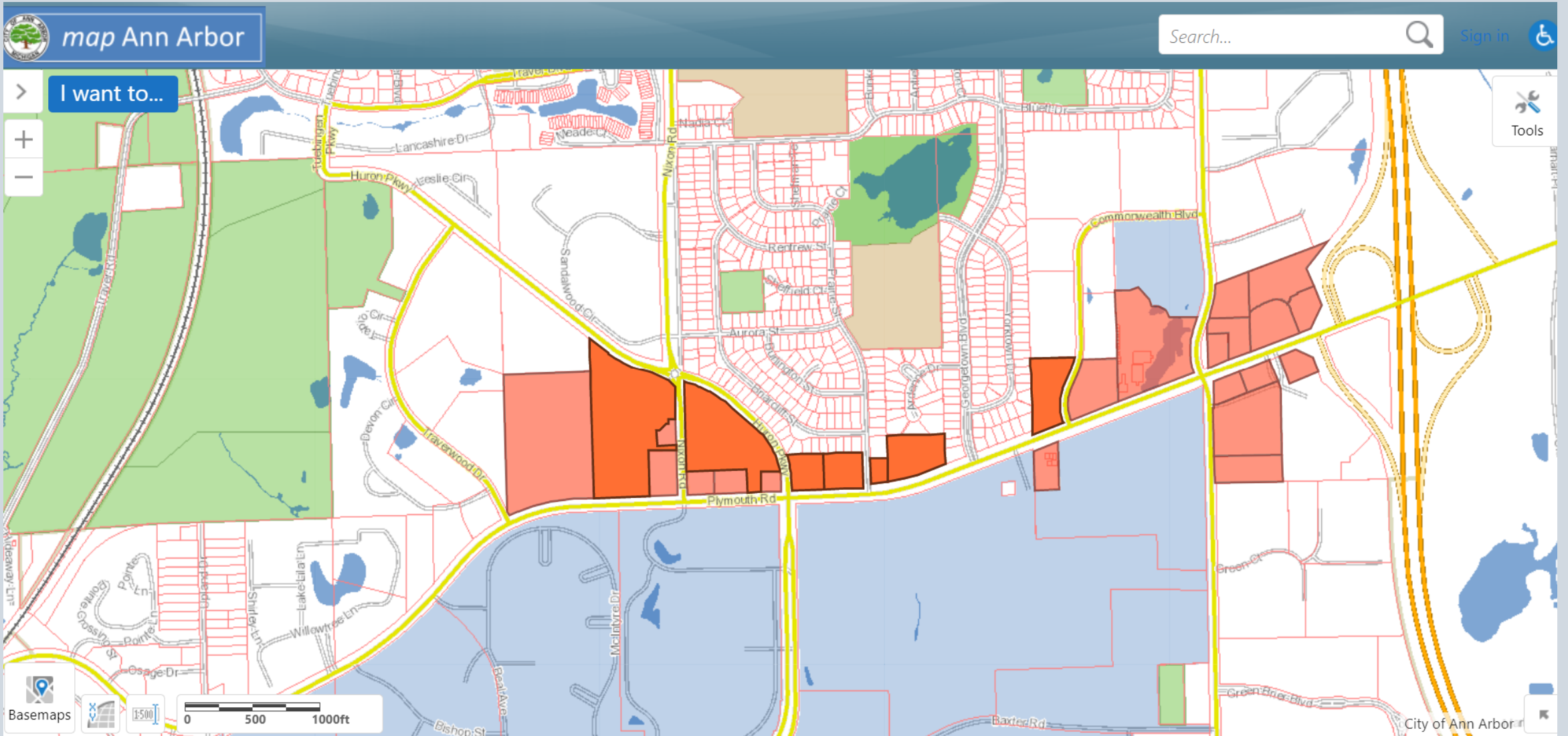


State & Eisenhower area – darker shading abut R district

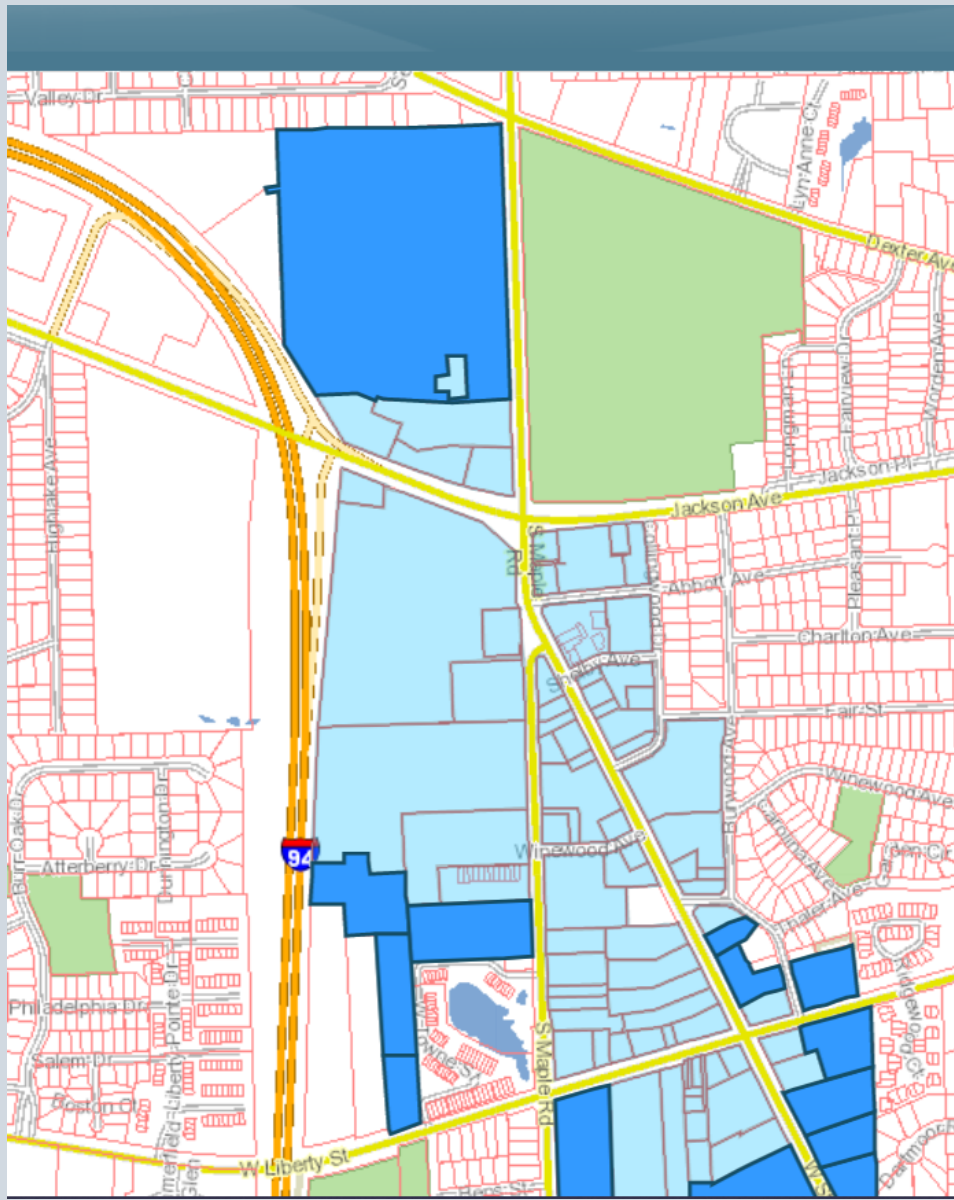


Washtenaw area (preliminary) – darker shading about R district





Plymouth Road (preliminary) area – darker shading about R district



W Stadium Blvd NORTH (preliminary) area – darker shading about R district

W Stadium Blvd SOUTH (preliminary) area

