



City of Ann Arbor – Fire Department

Fire Station #4



Project Context

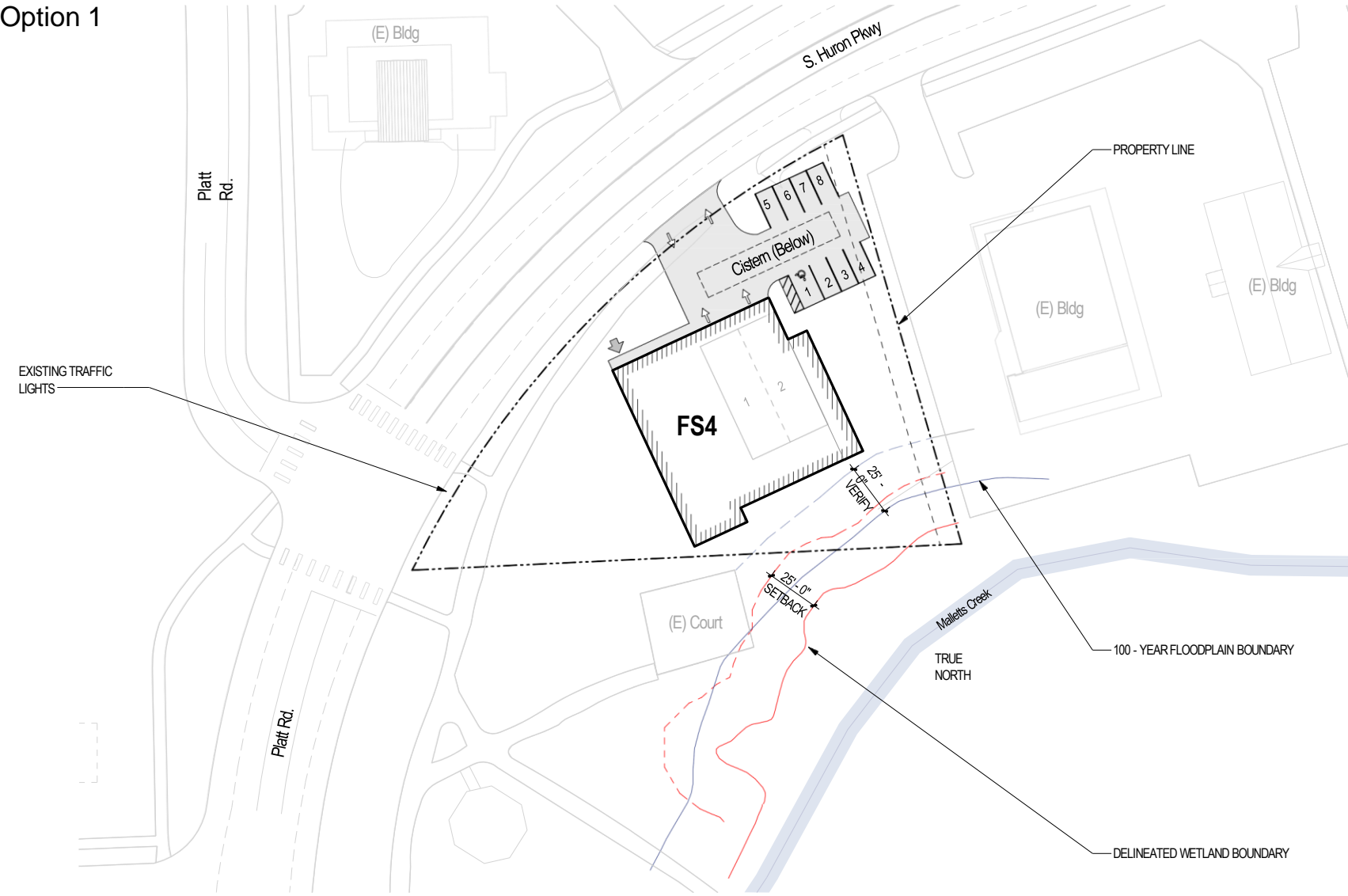
First Net Zero public building in Ann Arbor since passage of A2Zero initiative

First net zero fire station in the Midwest

Opportunity to educate the public regarding sustainability and enhance the park

Ann Arbor Fire Station 4

Site Plan - Option 1



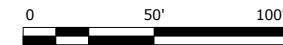
Advantages

- No change to the park

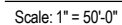
Disadvantages:

- Significant safety issues relative to ingress/egress
- Turns back toward park

SITE PLAN - OPTION 1
Scale: 1" = 50'-0"



Site Plan - Option 2



- Additional costs to fire department

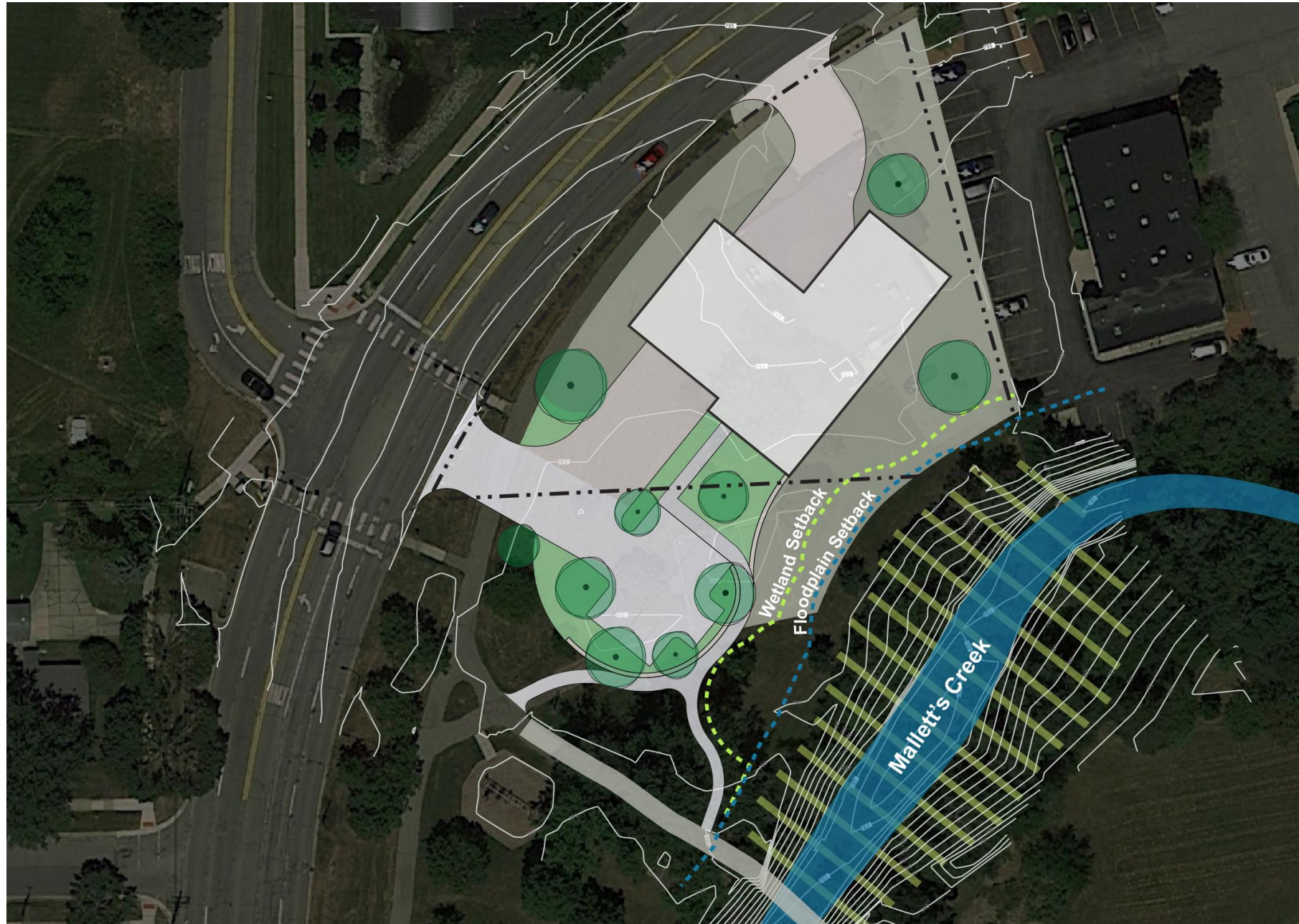
Ann Arbor Fire Station 4 – Aerial View



Current



Ann Arbor Fire Station 4 – Aerial View

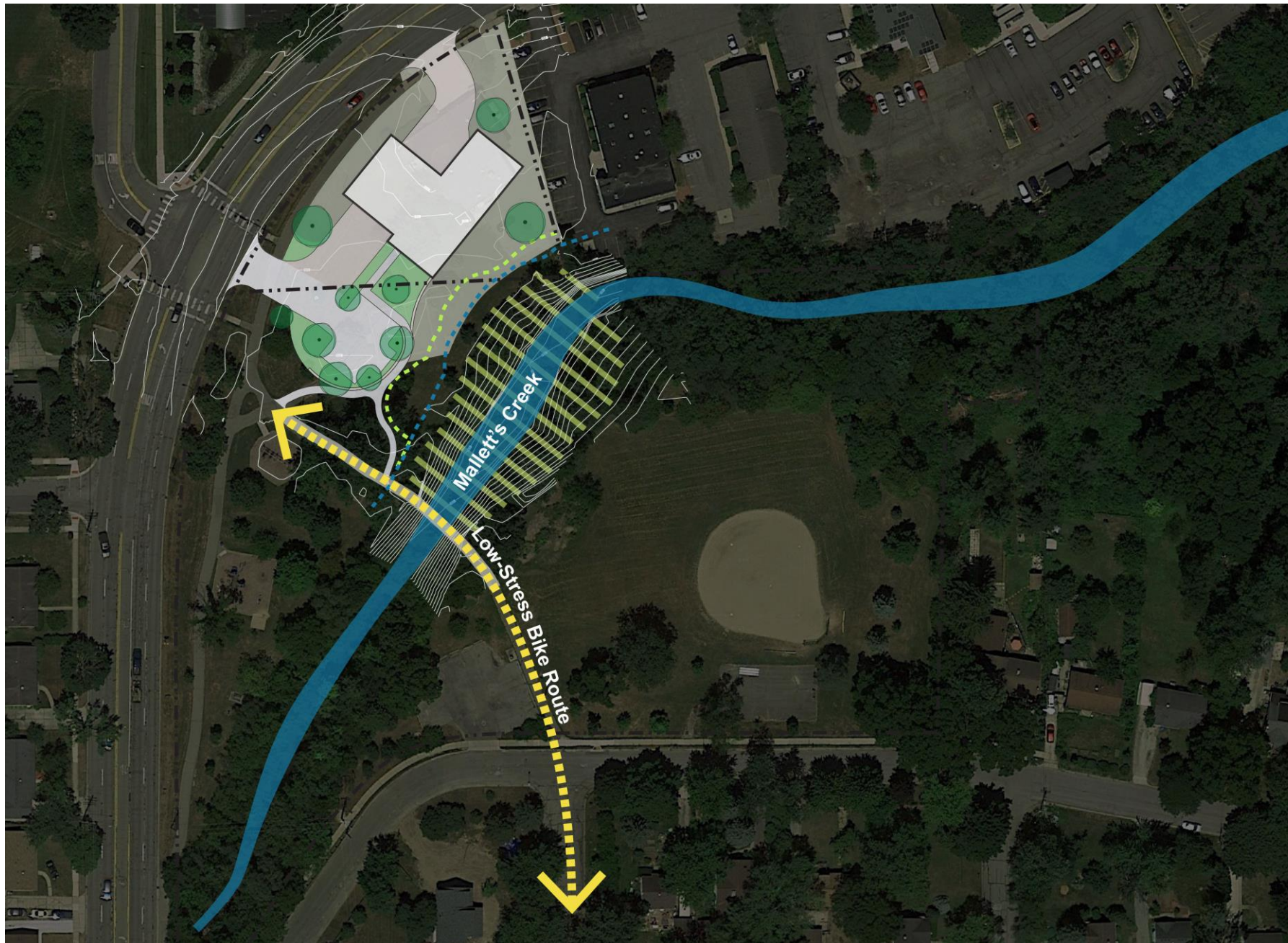


Opportunities:

- Controlled intersection
- Removal of Buckthorn & invasive species
- Upgraded plantings
- Erosion control/improved water quality
- Enhanced views to Mallett's Creek & park beyond



Ann Arbor Fire Station 4 – Aerial View of Park



Relationships:

- Retained bike and pedestrian routes
- Improved sight lines/ park access
- Native plants



ARCHITECTURE • PLANNING • DESIGN

Ann Arbor Fire Station 4



Partnership:

- Relocate existing basketball court
- Expand from half court to full court
- Area near baseball diamond (currently in need of upgrades)





Summary of Outcomes:

- Safety
- Improved park features
- Enhanced views
- Erosion control
- Pedestrian & bike routes maintained
- Improved vehicular circulation
- Elimination of invasive species
- Community education
- Firefighter interaction with public
- Shared sustainable mission and values

Next Steps in Parallel

Scheffler Park Enhancements

- Follow Parks & Recreation process for community engagement
 - Waiting return of senior park planner - end of 2021
 - 1/4 mile mailers
 - Community meeting
 - PAC approval

A3C / TCA / AAFD

- Fire station design and interior layout
- Exterior landscaping and site plan work with Parks landscape architect
- Construction timeline TBD
 - Funding

