

# Elizabeth Dean Fund Committee

## STAFF REPORT: FEBRUARY 9, 2021

---

### PROJECT UPDATES

#### 1. Riverside Park

Hillary has updated the landscape plan and staff are procuring quotes for the project.

### POTENTIAL PROJECTS

#### 1. Westover & Jackson Area (Project brought forward by: Beth Collins)

Approximately 20 trees could be planted here (see Jackson Westover Median Landscape Plan).

Staff recommends a mix of large shade trees and small flowering trees:

Size	Species	Count
Large Shade Trees	Hackberry	4
Medium Shade Trees	Hophornbeam	3
Small Flowering Trees	Japanese tree lilac	3
	Flowering dogwood	5
	Redbud	5
	TOTAL	20

#### Estimated Costs: Approximately \$10,200.00

Calculations: \$450/tree x 20 trees = \$9,000.00

12 waterings x \$5/tree/watering = \$1,200.00

\$9,000 + \$1,200 = \$10,200.00.

Staff will procure quotes if the committee would like to move forward with this project.

#### 2. Leslie Science & Nature Center (Project brought forward by: Susan Westoff, LSNC Staff)

Susan Westoff, with the Leslie Science and Nature Center is asking for funding of trees to help establish areas cleared of invasive species. Here is what Susan sent about their project and what they're hoping the committee will assist with:

"I wish I had a more detailed plan to present, and wonder if there is time to have more detailed information presented at a future meeting? With the environmental concerns at Leslie Science & Nature Center over the past two years, there was reason to come in and remove some existing trees, and clear part of the woods for some soil removal. With this, we took the opportunity of the clearing to extend our newly established and accessible trail in the woods (see attachment –

gray pathway) which we completed building this fall. In constructing the pathway we were able to remove a great deal of invasive plant material (mostly buckthorn and honeysuckle) and are now looking to establish new plants and new trees to both retain the soil and re-establish desired plants.

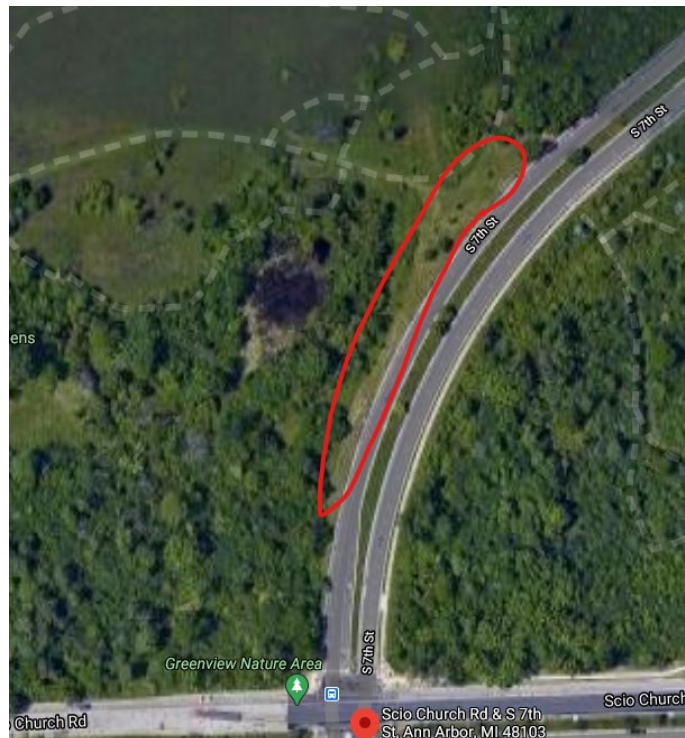
I do not currently have a plant plan laid out for the space, I am working on it currently and had a goal of finalizing that by early March, with the potential of spring volunteer workdays for plantings. Without a plan it is hard to estimate project costs, however truly any amount of funds would go a long way to reestablishing this area. In particular, the area around and below the future pavilion and over by the net and entrance area, is an identified space needing new tree plantings. An ideal project size would include purchase of the trees, a guarantee of tree health for a period of time from the nursery or seller. We would intent do plant and keep the tree watered with a combination of volunteer workdays, summer camp youth (as learning projects) and staff.

If you need a ballpark cost, I am positive \$15,000 would allow us to establish multiple trees that are large enough to take root and flourish.”

I have asked Susan to fill out a Project Proposal to provide more detailed information.

3. **S. 7<sup>th</sup> North of Scio Church** (Project brought forward by: Don Wortman)

West side of S. 7<sup>th</sup> St., just north of Scio Church (circled area below). This area was recently cleaned up and invasive species removed by the Friends of Greenview. There is the possibility of planting 6-12 trees along here (photo 1). The request is to plant crabapples to match what’s happening on the east side of S. 7<sup>th</sup> (photo 2).



**Photo 1**



**Photo 2**





4. **Elizabeth Dean Stone at Gallup Park** (Project brought forward by: Beth Collins)

The Elizabeth Dean Stone in Gallup Park is in the southeast corner of Huron Pkwy and Fuller light, between the butterfly garden and Huron Pkwy bridge. It is quite sparse of trees. There are several paths that intersect in this area. This might be a good location to consider planting a few trees, even small ones, near the stone. There is also the potential for the stone to be moved slightly west where there is an area to plant more trees around her stone/memorial.











## URBAN AND COMMUNITY FORESTRY MANAGEMENT PLAN UPDATE

Staff are drafting the Request for Proposal (RFP) and will post it later this month in our search for potential consultants. There will be a Proposal Review Team that will score all submitted proposals to narrow down potential candidates. The two or three top scoring firms will be invited to an interview round where they will present their vision on how they'll update our urban forestry plan. To assist with the selection process, we would like to invite the Chair of the E. Dean Fund Committee to sit on the proposal review team for the management plan update project. We appreciate the committee's commitment to our urban forest. You are a valued partner in the care and growth of our urban canopy. We hope you will agree to assist us with candidate selection as selecting the right consultant is the crucial first step in this plan update.