

Elizabeth Dean Fund Committee

STAFF REPORT: AUGUST 13, 2019

PROJECT UPDATES

1. Washtenaw/Stadium Medians

I spoke with Paul Matthews, Assistant Public Works Manager. He was tasked with care of area; he will have a landscaping plan created to replant and maintain them. This is expected to happen this fiscal year.



2. Vet's Park potential Soldier Row

Hillary has created two Landscape plan designs. Once EDFC chooses an option, Tiffany will get quotes for the trees, along with installation costs as a separate item for EDFC approval at the September meeting.

a. Project timeline:

Spring 2019	Project design (Hillary Hanzel)
Summer 2019	EDFC Project Review & Approval
Summer 2019	Order trees (Tiffany Giacobazzi)
Fall 2019	Plant trees (Matt Waldsmith & Staff)

Existing Conditions: This area was planted with crabapples. As they've declined, they've been replaced with crabapples.



3. Pioneer High School Planting along Stadium at 7th Street

I emailed the City Engineer to see if there are any projects scheduled for this area and he referred me to the Project Manager for two projects happening in that area. They are doing a Stormwater project on the north side of Stadium, and may impact the area for planting. Additionally, within the next 5-6 years they are going to do a complete road reconstruction project that will most assuredly affect this area. They “strongly recommend NOT to plant any trees along W. Stadium Boulevard between S. Main Street and Hutchins Avenue for the foreseeable future.”

At this time, this project is put on hold. We do not want to plant trees that will have to be torn out within the next 5 years.

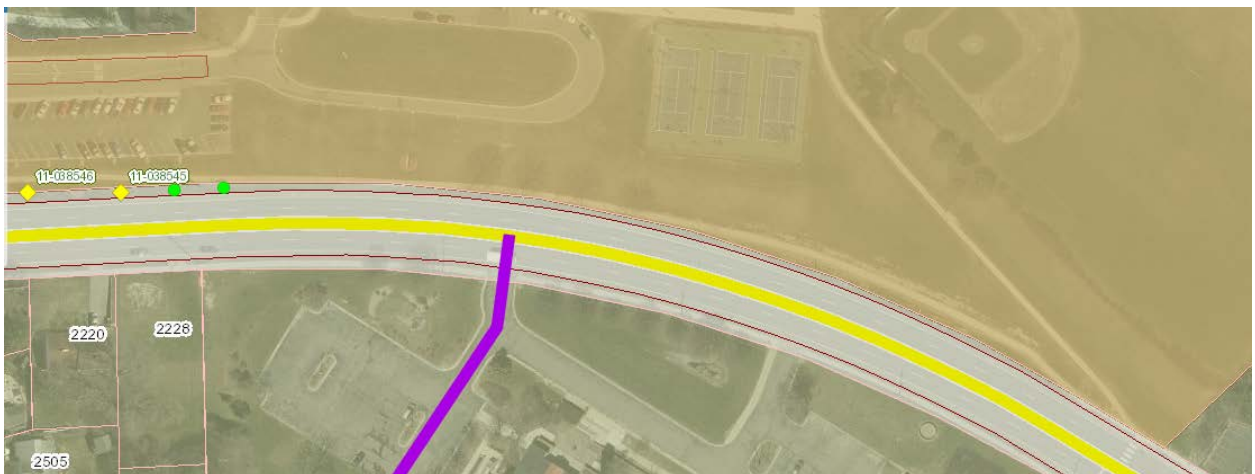


4. Tappen Middle School Planting along Stadium at Brockman BLVD

The ROW does not extend to the sidewalk along Stadium in front of Tappen Middle School. The only areas suitable for planting are on the west end of the property. The areas circled below are vacant planting sites. Engineering states they do not have any projects scheduled for this area. All 6 can be planted this fall.



The ROW gets very narrow along here; sometimes narrower than 4 feet. The tree plantings would be best on the school property. Does anyone have a contact with the school district to see about them doing a tree planting?



Planting further east will need to be approved by engineering. We do not have many plantings along E. Stadium due to narrow ROW. Trees are planted on the private side.



BOARD VACANCIES & CHAIRPERSON STATUS UPDATES

Chairperson

Ben Muth was elected Committee Chairperson during the October 13, 2015 committee meeting. Per the Bylaws, Article VI, Section 1: A Chair shall be elected by secret ballot from among the citizen members of the DFC. The Chair shall be elected for a two-year term by a majority of the voting members currently serving on the DFC.

Board Vacancies

There are two vacancies remaining on the committee. The Mayor's office and City Council are aware of the vacancies. Please continue to encourage those you think may be interested in serving on the committee to apply here: <http://a2gov.legistar.com/Page.aspx?M=Q>. They can find this link on the city's Elizabeth Dean Trust Fund information page as well.