

# EXHIBIT A

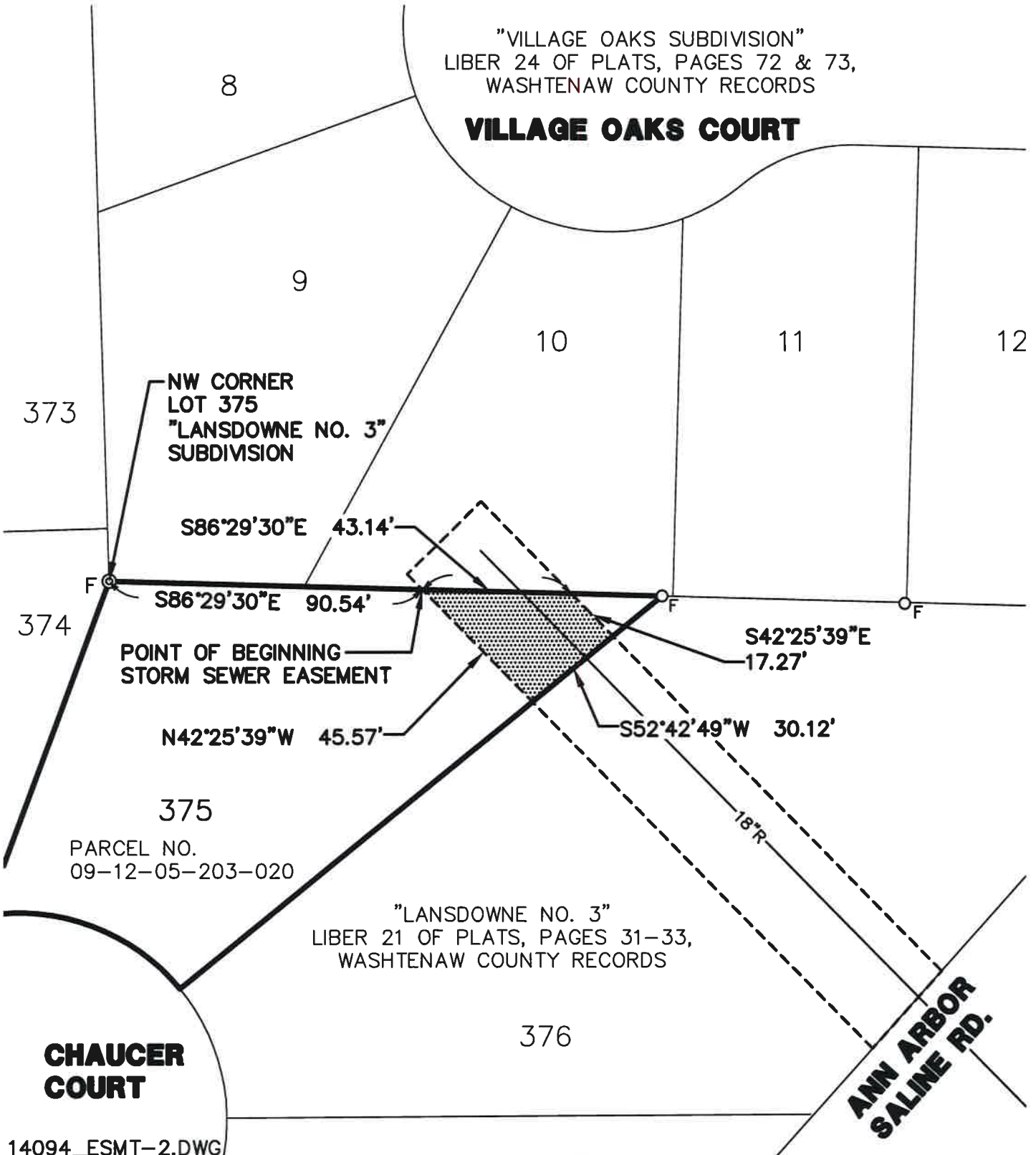
SURVEY OF A STORM SEWER EASEMENT LOCATED IN  
THE NW 1/4 OF SECTION 5, T3S, R6E,  
CITY OF ANN ARBOR, WASHTENAW COUNTY, MICHIGAN




BEARINGS BASED ON "LANSDOWNE NO. 3",  
AS RECORDED IN LIBER 21 OF PLATS, PAGES 31-33,  
WASHTENAW COUNTY RECORDS.

## LEGEND

- F FOUND IRON ROD
- F FOUND MONUMENT



14094\_ESMT-2.DWG

CLIENT: CITY OF ANN ARBOR	DATE: 8/26/16
JOB NO.: <b>14094</b>	SHEET 1 OF 2
SECTION: 5 TWN: 3S. RANGE: 6E.	SCALE: 1in. = 40 ft.
CITY OF ANN ARBOR	BOOK: 450
WASHTENAW COUNTY, MICHIGAN	BY: KMW
 <p><b>M I D W E S T E R N</b> C O N S U L T I N G</p> <p>3815 Plaza Drive Ann Arbor, Michigan 48108 (734) 995-0200 • www.midwesternconsulting.com</p> <p>Land Development • Land Survey • Institutional • Municipal Wireless Communications • Transportation • Landfill Services</p>	