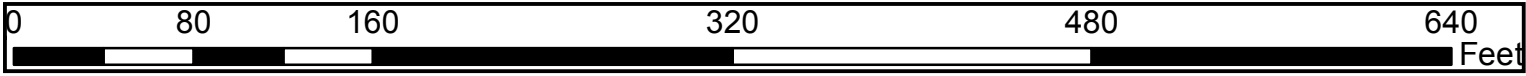


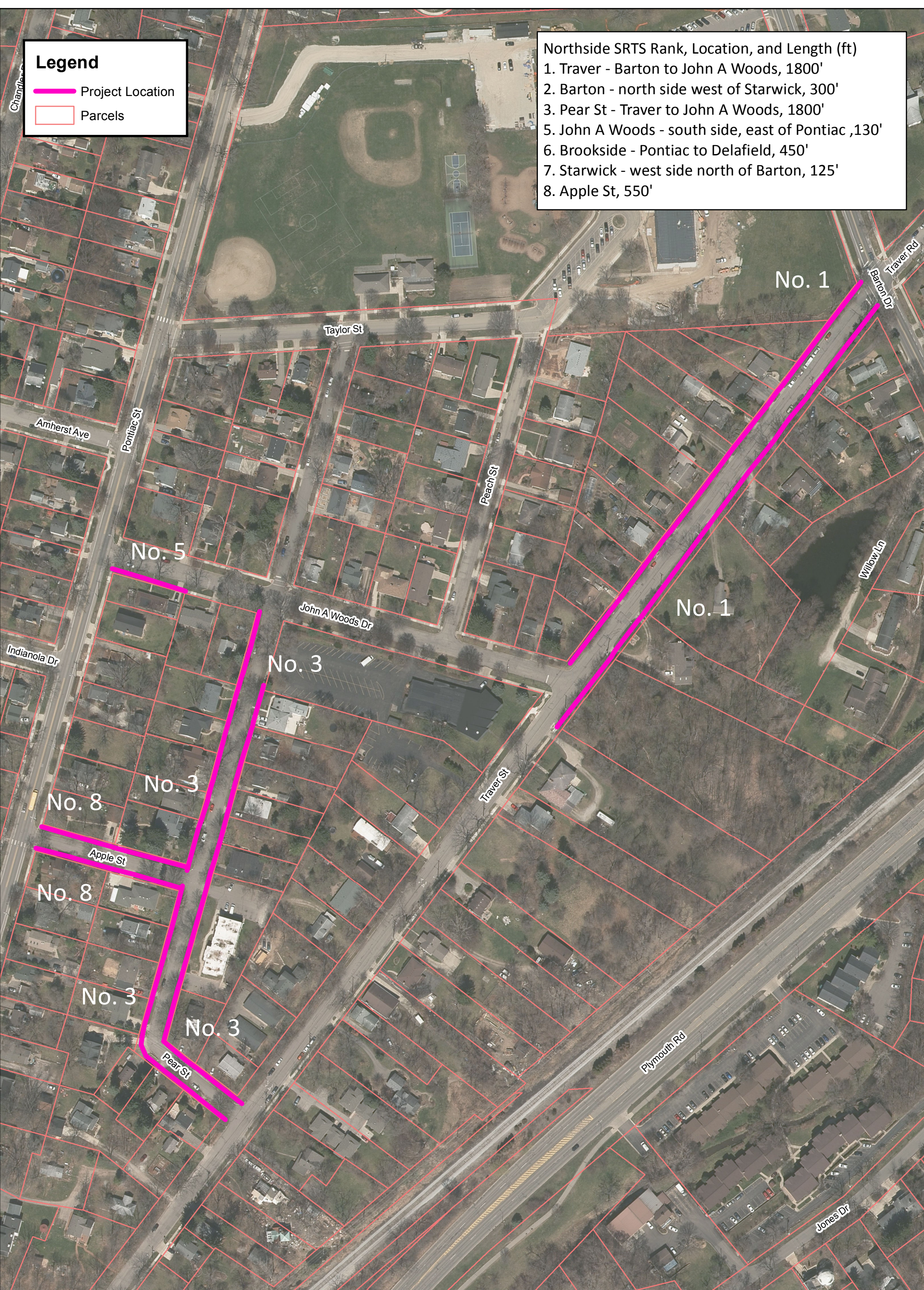
Legend

- Project Location
- Parcels

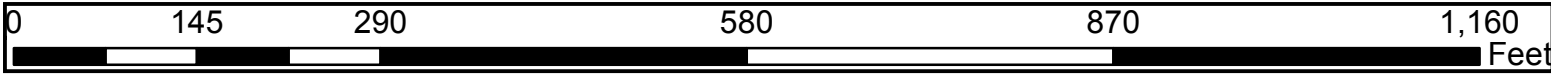
- Northside SRTS Rank, Location, and Length (ft)
- 1. Traver - Barton to John A Woods, 1800'
 - 2. Barton - north side west of Starwick, 300'
 - 3. Pear St - Traver to John A Woods, 1800'
 - 5. John A Woods - south side, east of Pontiac ,130'
 - 6. Brookside - Pontiac to Delafield, 450'
 - 7. Starwick - west side north of Barton, 125'
 - 8. Apple St, 550'

Sidewalk Gaps





Sidewalk Gaps



Legend

Project Location

Parcels

- Northside SRTS Rank, Location, and Length (ft)
1. Traver - Barton to John A Woods, 1800'

2. Barton - north side west of Starwick, 300'

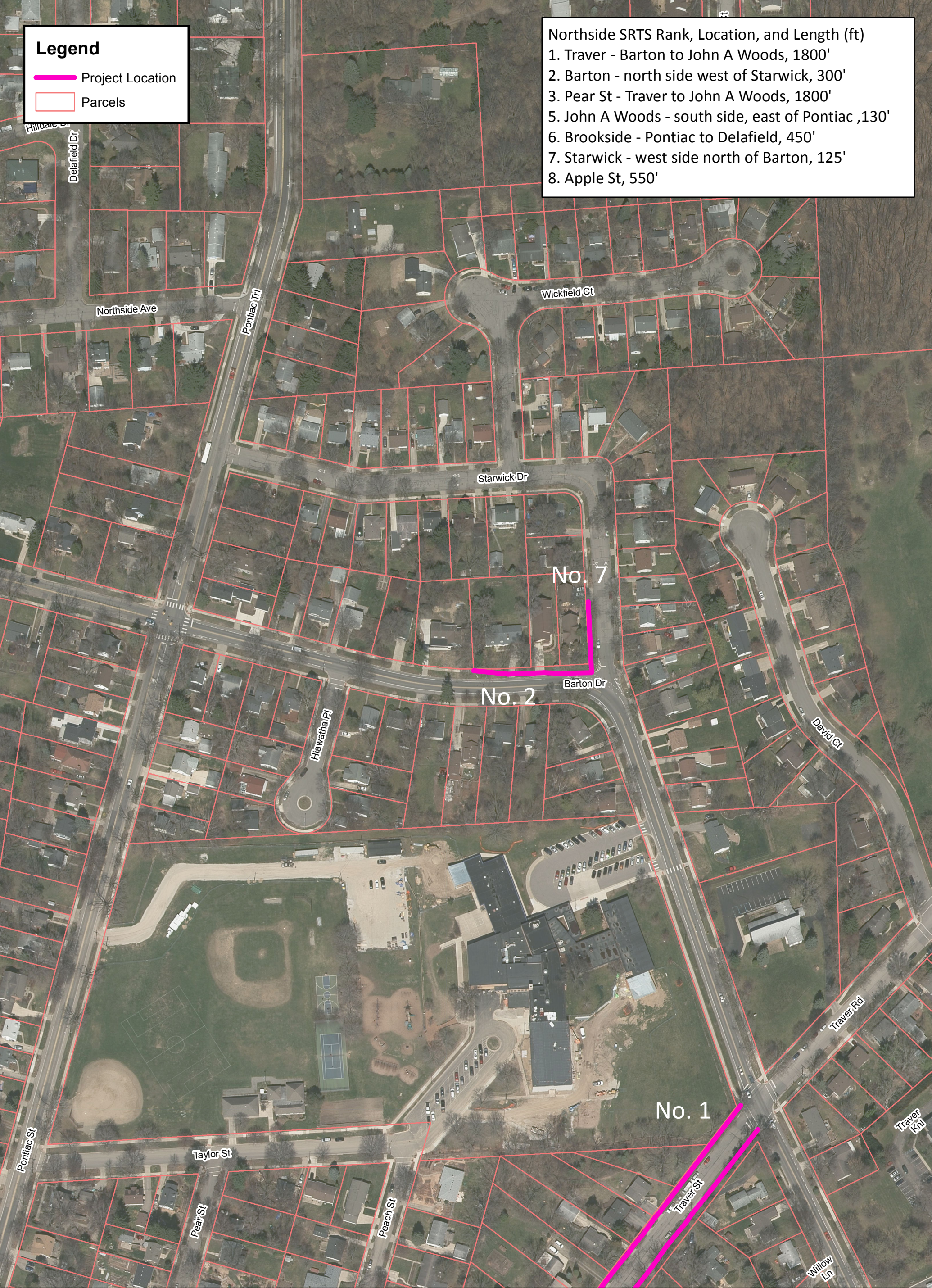
3. Pear St - Traver to John A Woods, 1800'

5. John A Woods - south side, east of Pontiac ,130'

6. Brookside - Pontiac to Delafield, 450'

7. Starwick - west side north of Barton, 125'

8. Apple St, 550'



Sidewalk Gaps

