



# WASHTENAW COUNTY SOLID WASTE MANAGEMENT PLAN

An Overview of the Process and Plan Document

# What is a Solid Waste Management Plan?

---

- Every county in the state of Michigan is required to have an approved plan
- The purpose is to ensure that waste disposal needs are being met for the next 10 years at facilities that comply with state laws.
- Opportunity for counties to set goals around waste, recycling, and composting.

# Where can I find a copy of the Plan?

---

- Available online at [www.ewashtenaw.org/swp](http://www.ewashtenaw.org/swp).
- Contact Washtenaw County Public Works at [publicworks@ewashtenaw.org](mailto:publicworks@ewashtenaw.org).



# Overview of Planning Process

---

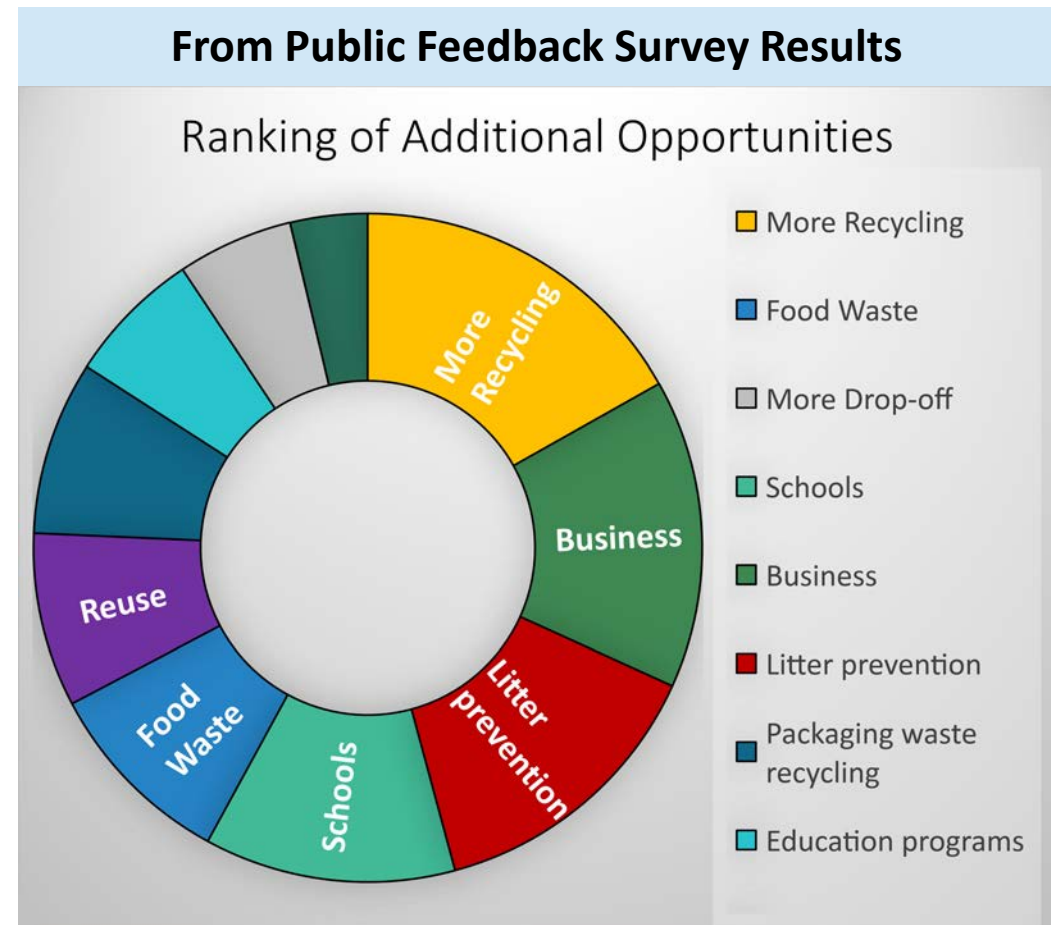
- Request to open plan by Advanced Disposal (ADS) to pursue expansion
- Appointment of 14-member Solid Waste Planning Committee
- First meeting conducted in August 2015
- Monthly meetings to review, discuss and determine what to include in updated plan
- Request for expansion rescinded by ADS in summer 2016
- Plan update process continued
- No landfill expansion included or approved in approved draft plan

# Plan Development Overview

Section	Timing
Database	April 2016 – initial review November 2016 – drafted with narrative
Appendix A (includes evaluation of current systems (SWOT), funding options, additional details, etc)	April 2016 – January 2017
Goals & Objectives	July – Sept. 2016
The Selected System	Oct. 2016
Siting Criteria	November 2016 – February 2017
Implementation Plan	December 2016 - February 2017
Appendix B – Non Selected Systems	February 2017
Executive Summary	March 2017
Appendix D – Other Attachments	April 2017
Appendix C – Public Participation	Finalized prior to submitting to state

# Public Engagement during Planning Process

- Rotated Planning Committee Meetings to different locations around the County
- Public Feedback Survey – April – Oct. 2016 (see image to right)
  - 372 responses
- Promotion on social media, county events



# Outcomes of the Plan

---

- Working towards zero waste
- Reduce need for disposal
- Flexibility to handle emerging waste issues
- Emphasis on education and outreach
- Data informs path forward
- Active implementation

**Access & Convenience**

**More Diversion and  
Recovery, Less Disposal**

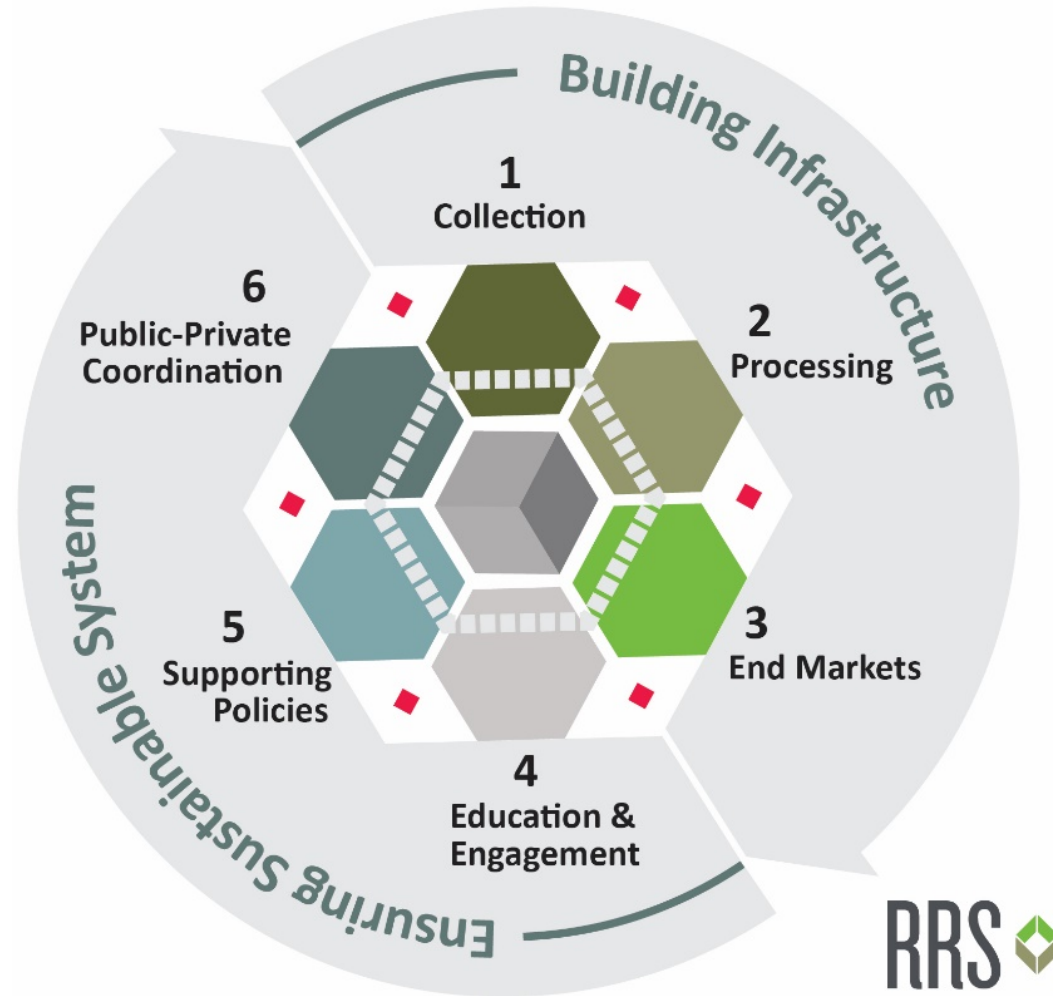
**Education & Outreach**

**Data & Measurement**

**Funding**

**Coordination &  
Collaboration**

# KEY COMPONENTS OF Effective Municipal Recycling Programs





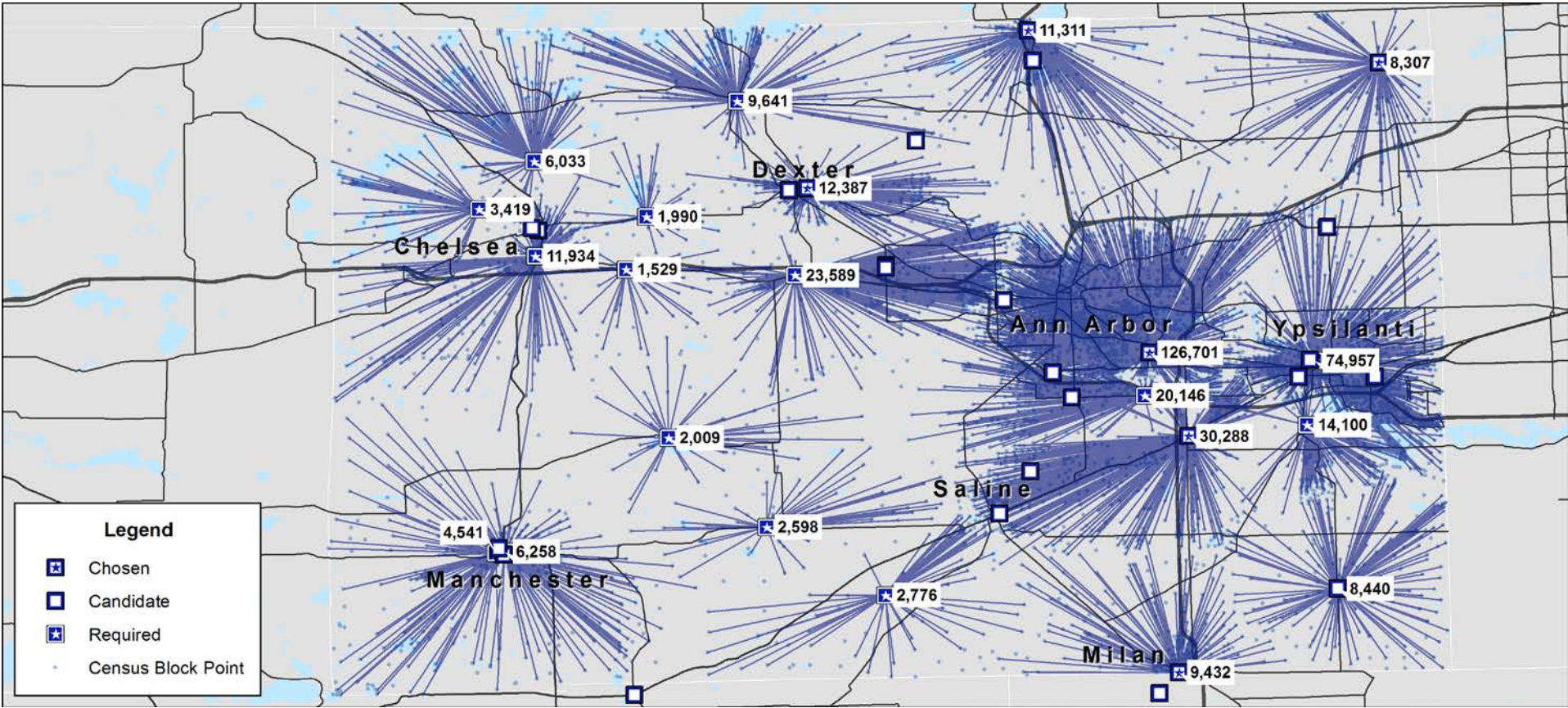
# Guiding Principle: Access and Convenience

---

Programs and services must be accessible and convenient for users.



# Example: Diversion Site Feasibility Study





# Guiding Principle: More Diversion & Recovery, Less Disposal

---

Decrease need for disposal through opportunities to reduce, reuse, and recycle.



# Guiding Principle: Education & Outreach

---

Proper education & outreach ensures proper participation, awareness of opportunities, and engagement by program users of all ages.



# Guiding Principle: Data & Measurement

---

Data provides the basis establishing realistic and measurable goals.

Residential  
Recycling Rate  
33%

Commercial  
Recycling Rate  
12%

Percent of County  
Pop. w/curbside  
Recycling  
66%

Tons Generated  
in County  
Requiring Disposal  
291,771



# Guiding Principle: Funding

---

Funding is required to implement goals.  
Diversification of funding will support long term and sustainable programming.



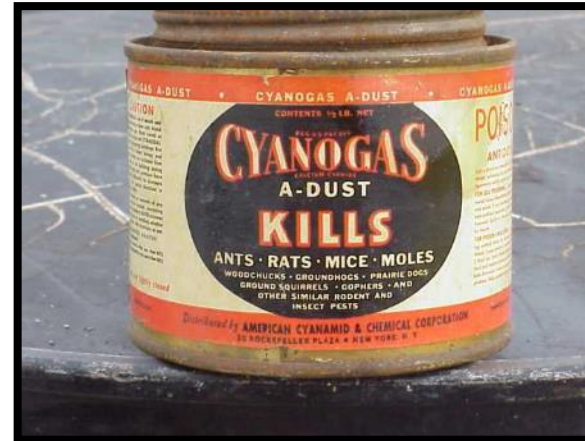
# Guiding Principle: Coordination & Collaboration

---

Waste is regional and working together can be more impactful, manage costs, and achieve goals.



# County Programs: Household Hazardous Waste



## GUIDING PRINCIPLES

- ✓ Access & Convenience
- ✓ ↑ Diversion & Recovery
- ✓ Education & Outreach
- ✓ Data & Measurement
- Funding
- ✓ Coordination & Collaboration

# County Programs: Clean Sweep Program



## GUIDING PRINCIPLES

- ✓ Access & Convenience
- ✓ ↑ Diversion & Recovery
- ✓ Education & Outreach
- ✓ Data & Measurement
- ✓ Funding
- ✓ Coordination & Collaboration



# County Programs: Clean-Up Days



## GUIDING PRINCIPLES

- ✓ Access & Convenience
- ✓ ↑ Diversion & Recovery
- Education & Outreach
- ✓ Data & Measurement
- Funding
- ✓ Coordination & Collaboration



# County Programs: Shrink Wrap Recycling Program



## GUIDING PRINCIPLES

- ✓ Access & Convenience
- ✓ ↑ Diversion & Recovery
- Education & Outreach
- ✓ Data & Measurement
- Funding
- ✓ Coordination & Collaboration

# County Programs: Pharmaceutical & Sharps Take-Back Program



[www.DontFlushDrugs.com](http://www.DontFlushDrugs.com)

## GUIDING PRINCIPLES

- ✓ Access & Convenience
- ✓ ↑ Diversion & Recovery
- ✓ Education & Outreach
- ✓ Data & Measurement
- ✓ Funding
- ✓ Coordination & Collaboration

# County Programs: Zero Waste Washtenaw – Special Events



## GUIDING PRINCIPLES

- ✓ Access & Convenience
- ✓ ↑ Diversion & Recovery
- ✓ Education & Outreach
- ✓ Data & Measurement
- ✓ Funding
- ✓ Coordination & Collaboration

# County Programs: Waste Knot & Environmental Excellence



## GUIDING PRINCIPLES

- Access & Convenience
- ✓ ↑ Diversion & Recovery
- ✓ Education & Outreach
- Data & Measurement
- Funding
- ✓ Coordination & Collaboration



# County Programs: Master Composter Certification Program



## GUIDING PRINCIPLES

Access & Convenience

✓ ↑ Diversion & Recovery

✓ Education & Outreach

Data & Measurement

Funding

✓ Coordination & Collaboration



# Plan Approval Process

---

- April 21, 2017 - 90-day public comment period began
- May, June, July 2017- 2 informational meetings and 1 public hearing conducted
- October 19, 2017 – Solid Waste Planning Committee approved plan; forward to Board of Public Works.
- November 15, 2017 - Board of Public Works approved plan and forwarded to Board of Commissioners for approval.

# Plan Approval Process - continued

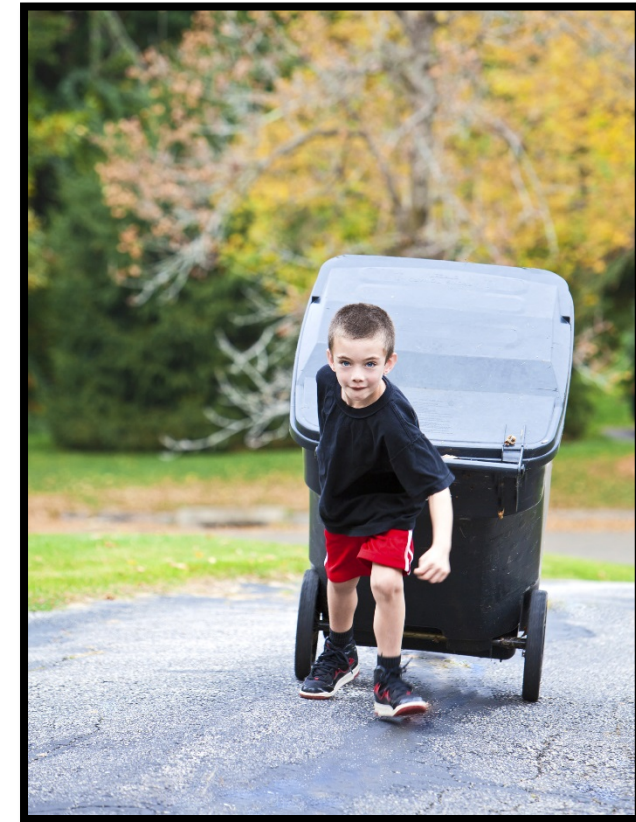
---

- December 6, 2017 – Board of Commissioners approved plan. County will seek approval from the local units of government (LUG).
- Once approval is received from 67% of all LUG, the plan is submitted to the Michigan Department of Environmental Quality (MDEQ) for final approval.
- Estimated timeline – submit plan to MDEQ early summer 2018.

# Plan Implementation

---

- Establish a Plan Action Committee (PAC) to guide and support County
- Calendar and timeline to achieve milestones for implementation
- Interested in participating?  
Please contact County at [publicworks@ewashtenaw.org](mailto:publicworks@ewashtenaw.org)





# Implementation Plan– Long Term

---

Implementation Step	Timeline
Appoint Plan Advisory Committee (PAC)	3-6 months after plan approval
Prioritize Programs/Projects	6-12 months after plan approval
Develop Action Plans	6-12 months after plan approval
Purse Funding Mechanisms to Support Plan Implementation	Within first two years
Milestone Reporting	Annual
Strategic Planning for Plan Implementation	Annual
Stakeholder and Public Engagement	Twice per year

# Implementation Plan – Short Term

---

## Current Projects:

- Drop-off Station (DOS) Feasibility Study
- Regional Recycling Authority Feasibility Study



# CALL TO ACTION!

We want to hear from you!  
What are your ideas for the future of solid  
waste and recycling?

*Please contact us at [publicworks@ewashtenaw.org](mailto:publicworks@ewashtenaw.org)  
to be included in future Plan Implementation actions.*

Thank you!