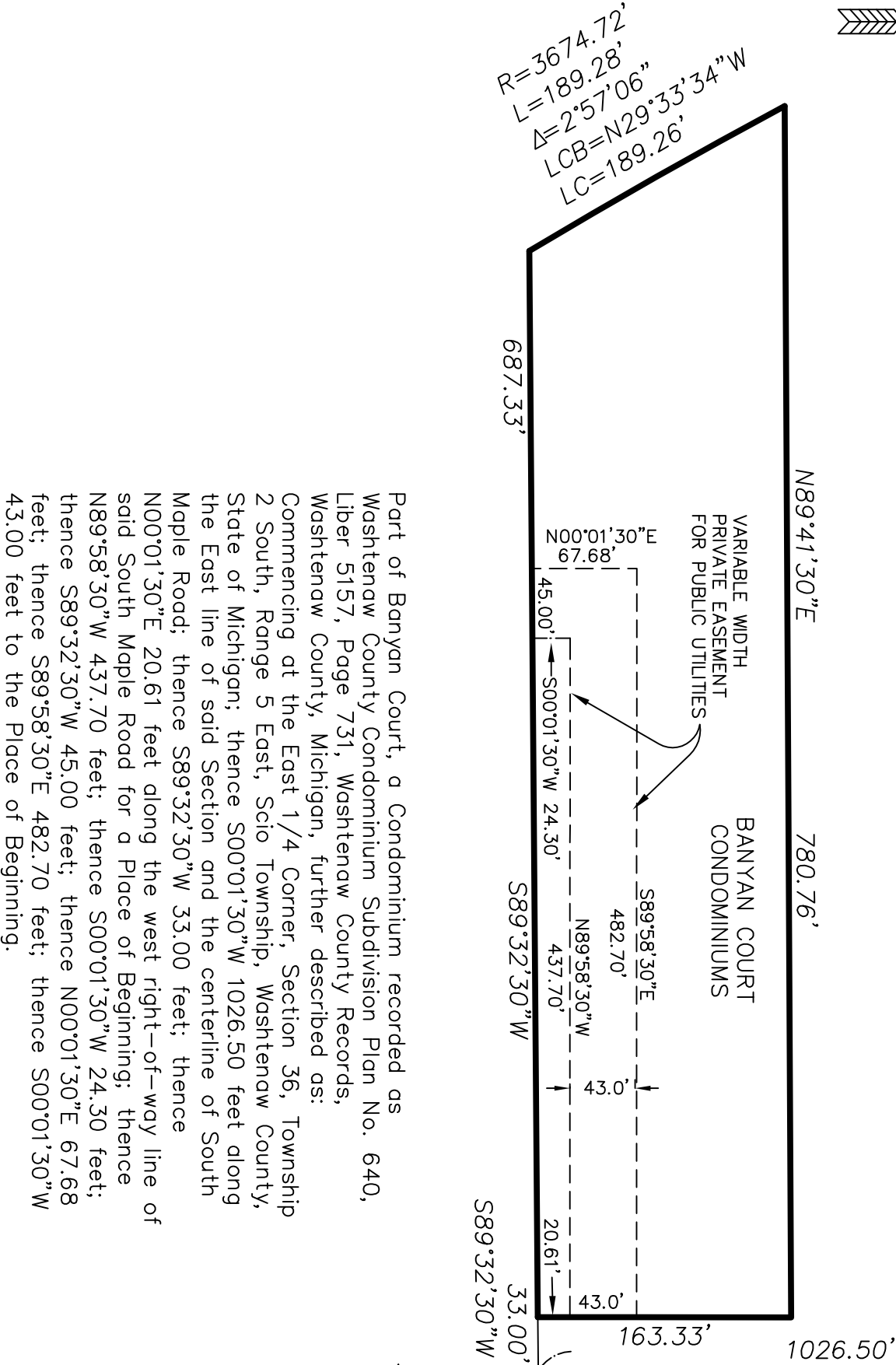
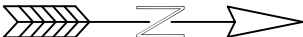


SKETCH OF PUBLIC UTILITY EASEMENT
EXHIBIT A





Part of Banyan Court, a Condominium recorded as Washtenaw County Condominium Subdivision Plan No. 640, Liber 5157, Page 731, Washtenaw County Records, Washtenaw County, Michigan, further described as: Commencing at the East 1/4 Corner, Section 36, Township 2 South, Range 5 East, Scio Township, Washtenaw County, State of Michigan; thence S00°01'30\"/>

S.E. COR.
SECTION 36
T2S, R5E
SCIO TWP
CITY OF ANN
ARBOR

S00°01'30\"/>

E 1/4 COR.
SECTION 36
T2S, R5E
SCIO TWP
CITY OF ANN
ARBOR

CLIENT: ANN ARBOR BUILDERS			<div>Arbor Land Consultants, Inc.</div> <div>Professional Land Surveyors</div> <div>2936 Madrono Ann Arbor, Mi 48103 Tel (734) 669-2960 Fax (734) 669-2961 www.arborlandinc.com</div>
BANYAN COURT CONDOMINIUMS PUBLIC UTILITIES EASEMENT SECTION 36, T2S, R5E CITY OF ANN ARBOR MICHIGAN			
	JOB No. 08715	DATE 3-04-2016	
SCALE 1 INCH = 100 FEET	SHEET 1 OF 1	REVISION: 12-07-2016	