

Revisions

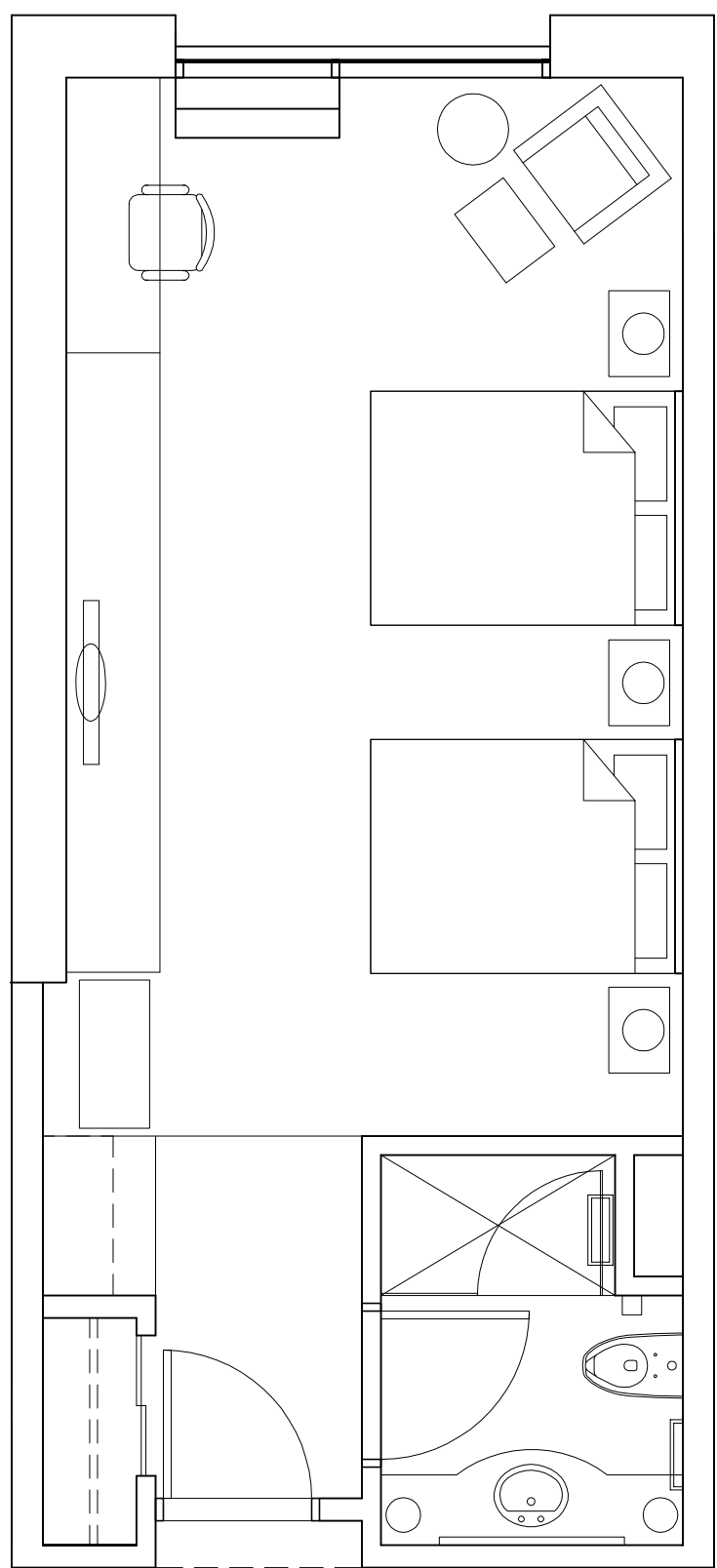
11-26-14  
11-10-14  
10-24-14  
10-21-14

Date ☒ Preliminary  
10-17-14 ☐ Construction  
Drawn ☐ Record  
SB  
Checked ☐ Do not scale  
GC Use figured  
Approved dimensions only  
JS  
Bldgpk Number

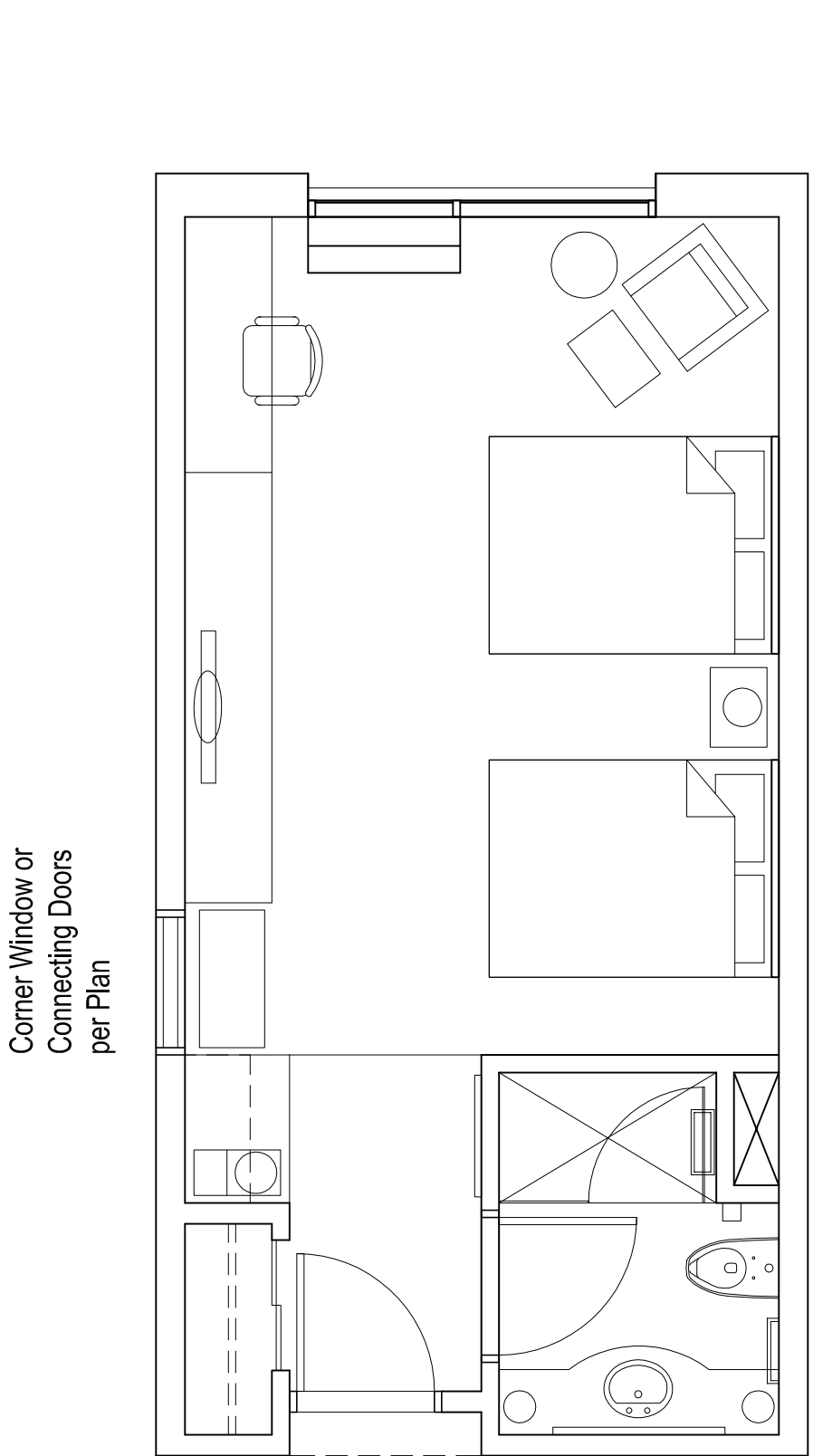
Job Number  
2013234  
Title  
Proposed  
Roof Plans

Scale: 1" = 10'-0"  
Sheet  
A9

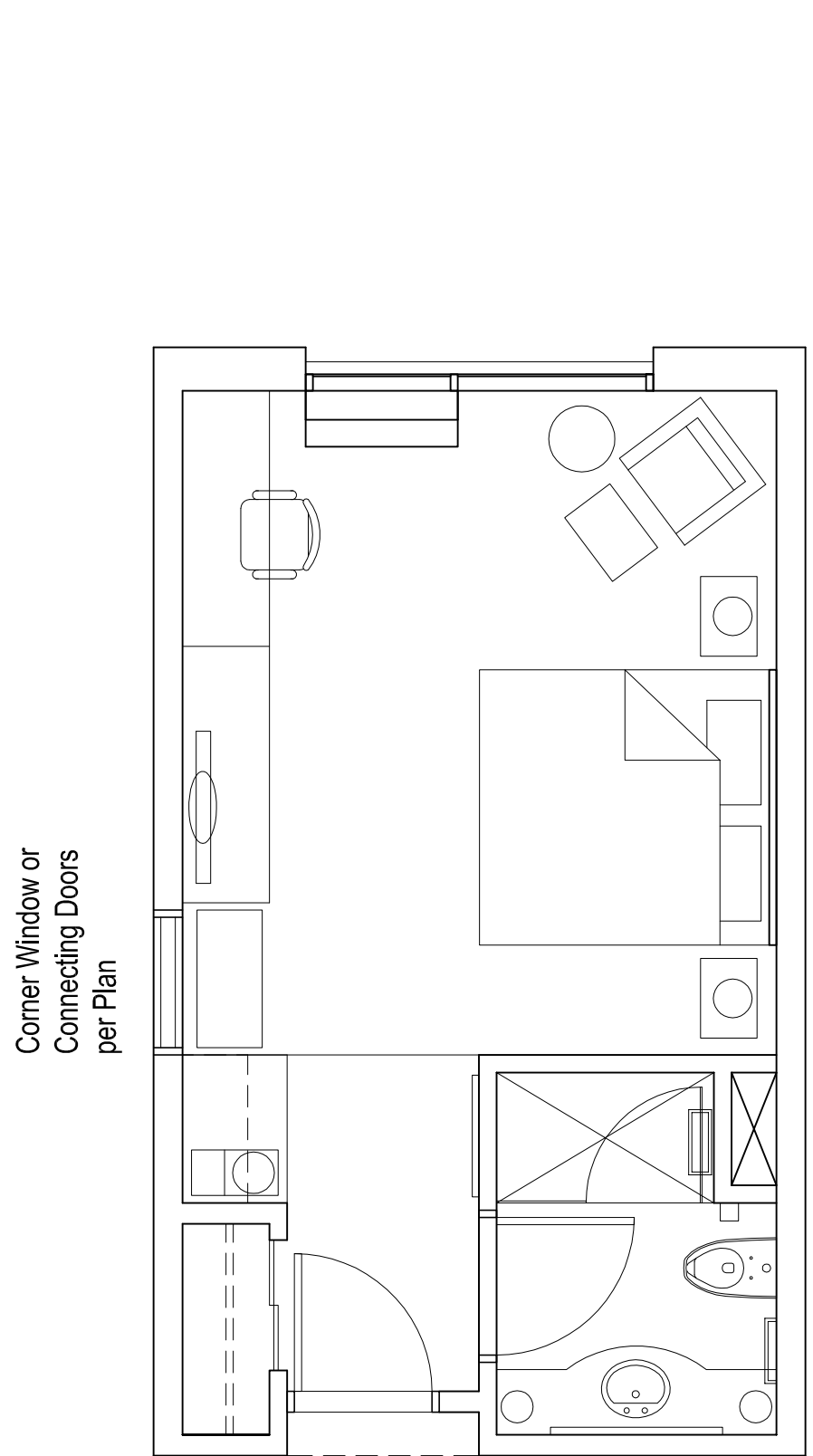
F:\2013\2013234 - Glen Ann Hotel\00-PreDesign\2013234 - Glen Ann Hotel 11-26-14.dwg, 11/26/2014 9:21:03 AM, isort, C:\HPDF Writer.pc3, 1:1, NeumannSmith Architecture



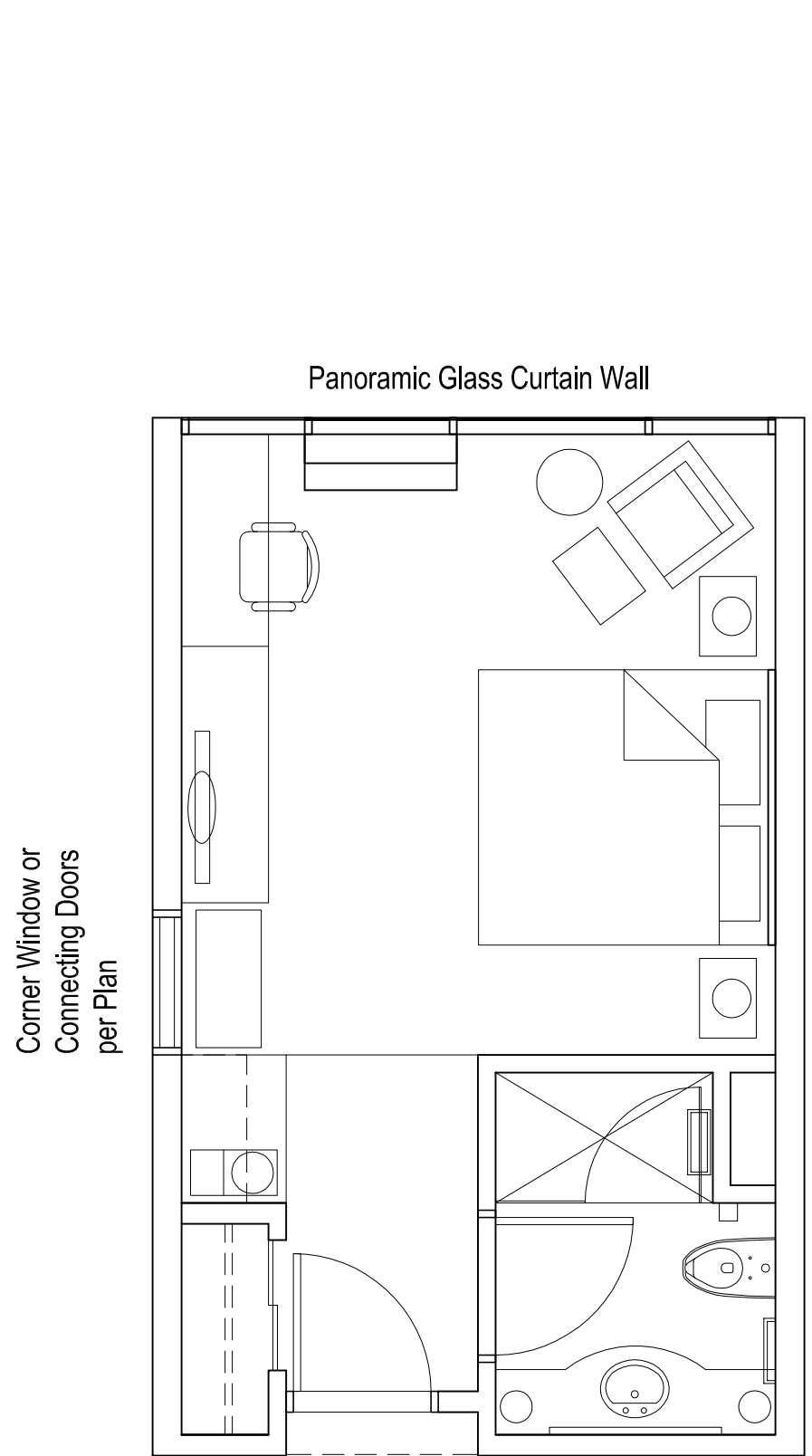
**XL Double Queen Room**  
13'-8" x 31'-4" 428 SF  
(10 Keys)



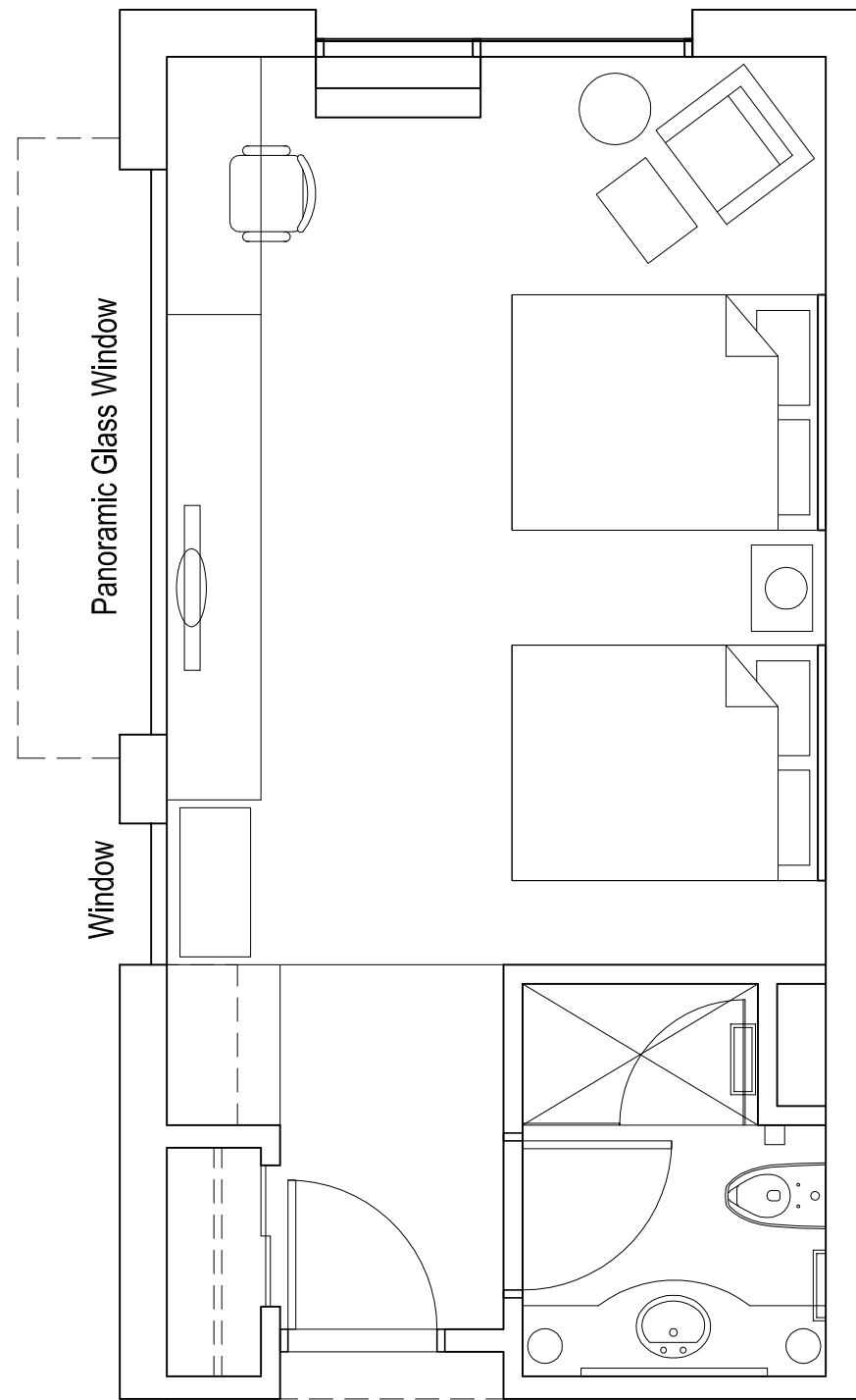
**Std. Double Queen Room**  
13'-8" x 28'-0" 378 SF  
(60 Keys)



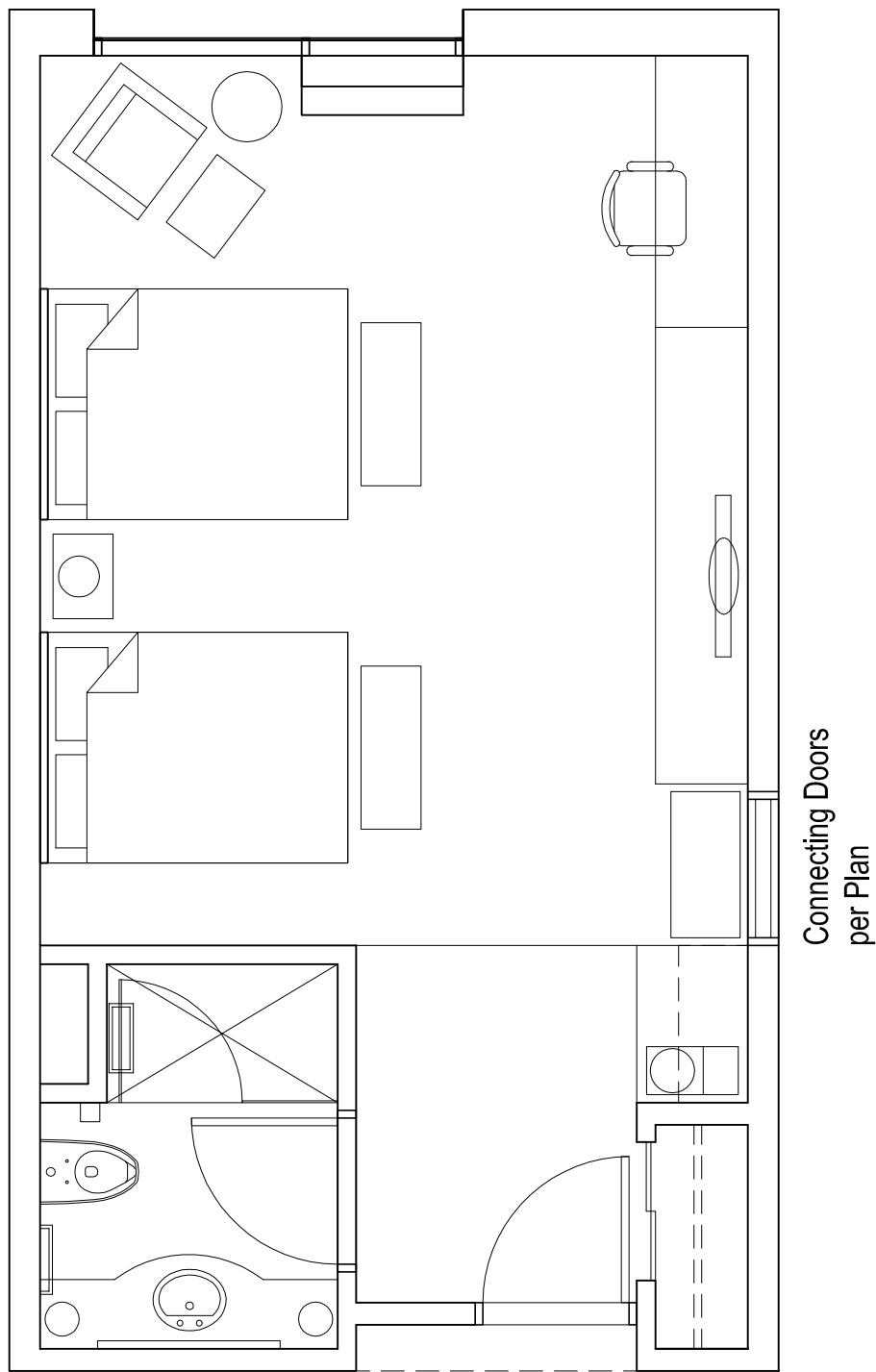
**Std. King Room**  
13'-8" x 24'-0" 328 SF  
(45 Keys)



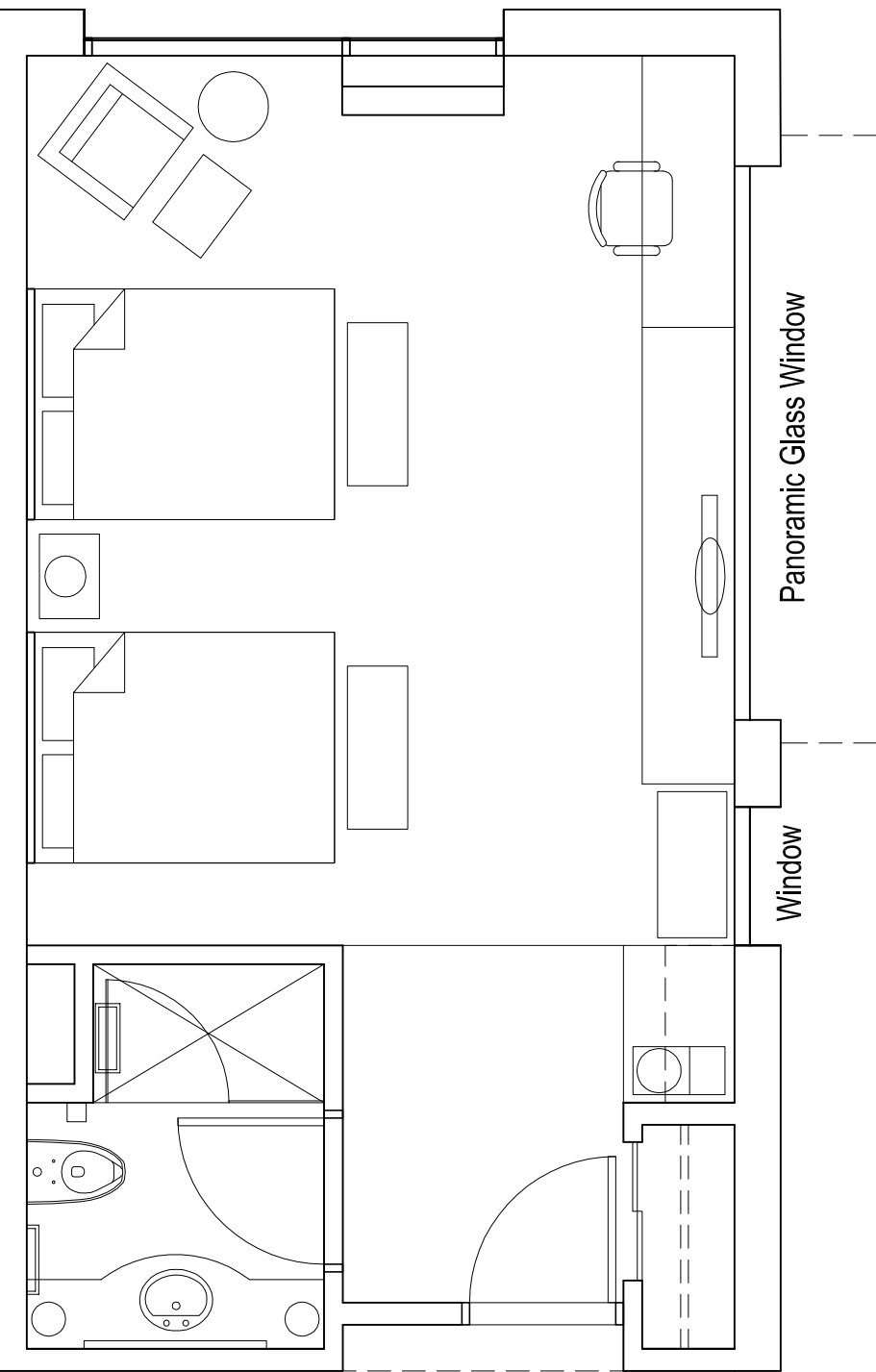
**Niche Panoramic King Room**  
13'-8" x 23'-0" 314 SF  
(10 Keys)



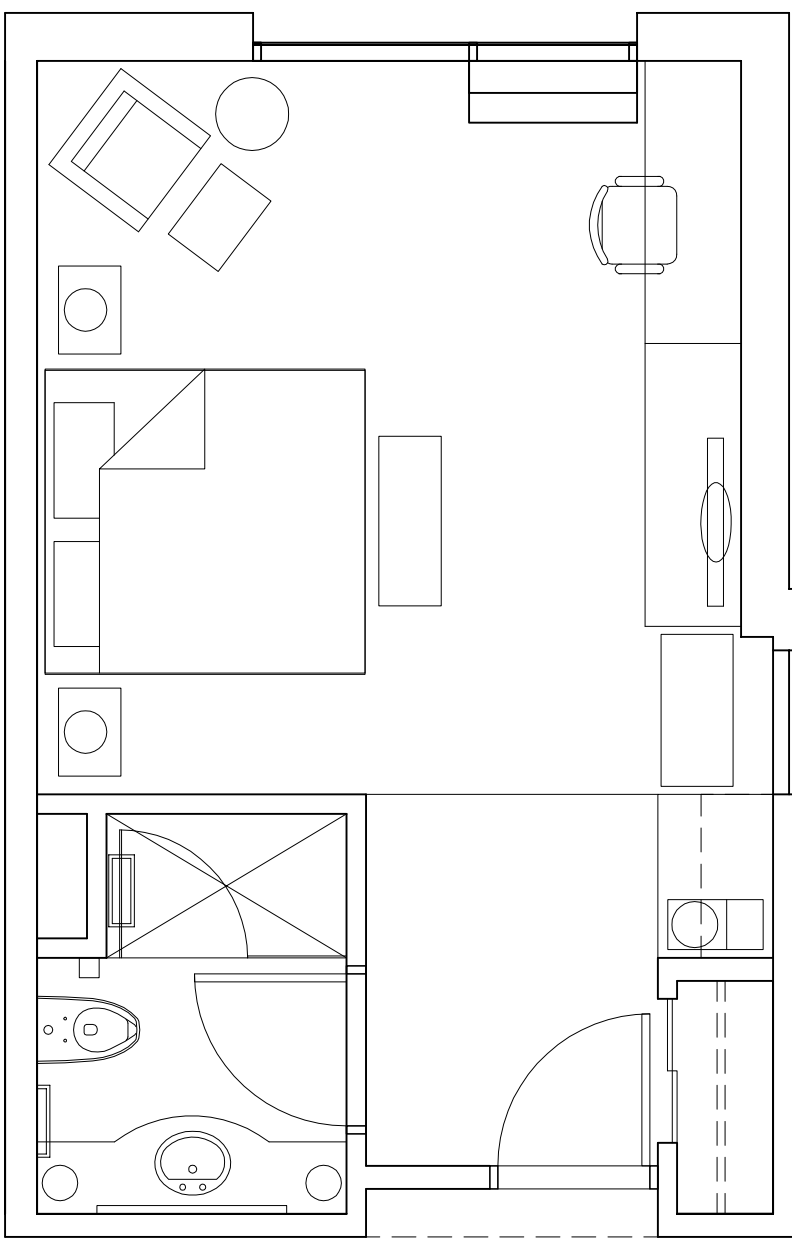
**Corner Panoramic Double Queen Room**  
14'-0" x 28'-0" 392 SF  
(5 Keys)



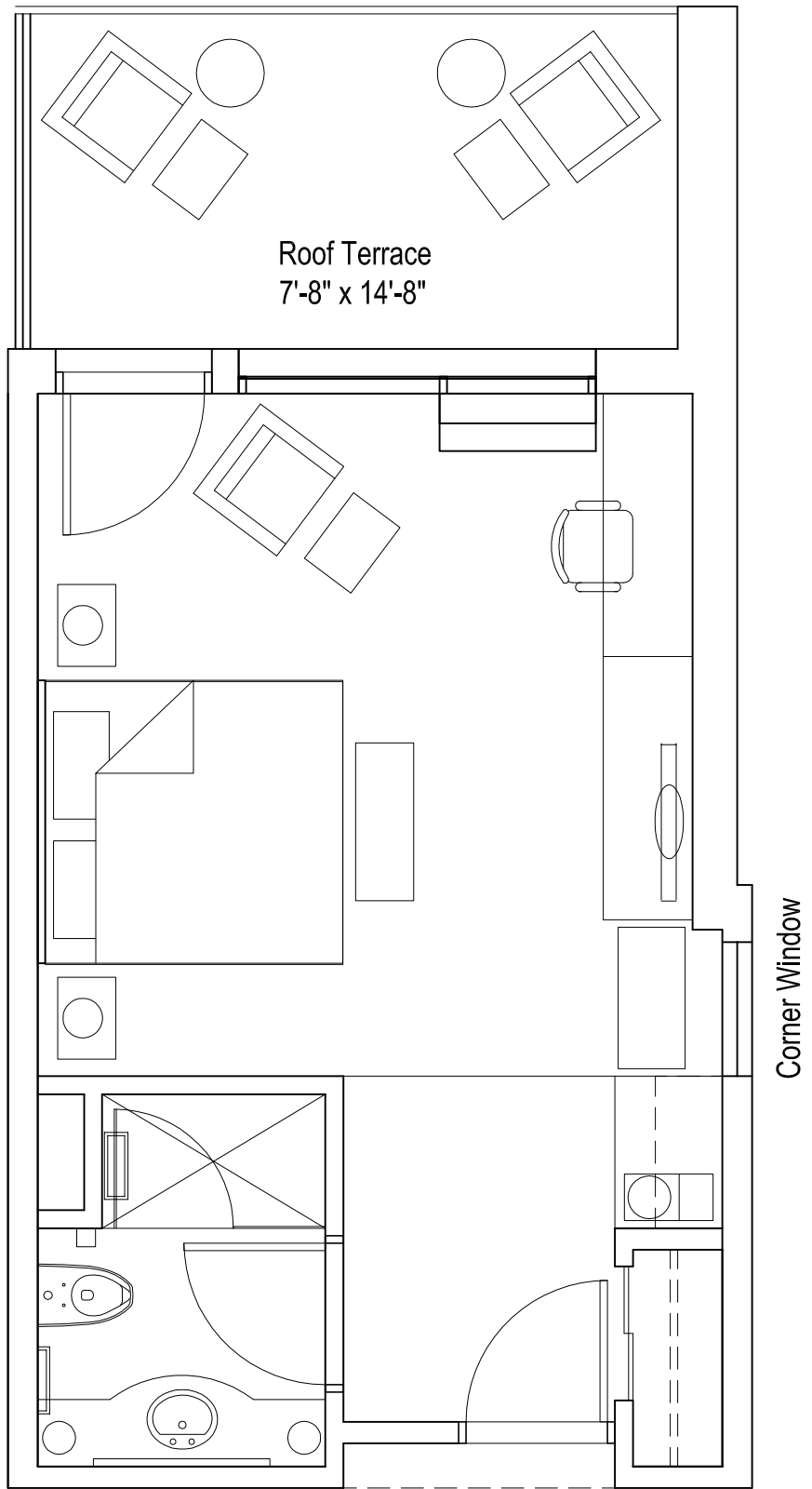
**Wide Double Queen Room**  
15'-4" x 28'-0" 429 SF  
(10 Keys)



**Wide Corner Panoramic Double Queen Room**  
15'-4" x 28'-0" 429 SF  
(5 Keys)



**Wide King Room**  
15'-4" x 24'-0" 367 SF  
(12 Keys)



**Wide Terrace King Room**  
15'-4" x 24'-0" 367 SF  
(3 Keys)

Handicapped Double Quuen Room Types are not yet shown

## Double Queen Rooms

90 Double Queens, total 35,355 SF average 393 SF per key

Handicapped King Room Types are not yet shown

## King Rooms

70 Double Queens, total 23,405 SF, average 334 SF per key

Revisions

Date **11-26-14** ☒ Preliminary  
Drawn ☐ Construction  
SB ☐ Record  
Checked **GC** **Do not scale**  
Approved **JS** Use figured dimensions only  
Bldgpak Number

Job Number  
**2013234**  
Title  
**Enlarged Typical Hotel Rooms**

Scale: 1/4"=1'-0"  
Sheet  
**A8**

**Glen Ann  
HOTEL**

Mixed-Use Planned Unit  
Development  
Ann Arbor, Michigan



Revisions

11-26-14	
11-10-14	
10-24-14	
Date	<input checked="" type="checkbox"/> Preliminary
10-17-14	<input type="checkbox"/> Construction
Drawn	<input type="checkbox"/> Record
SB	
Checked	Do not scale
GC	Use figured
Approved	dimensions only
JS	
Block Number	

Job Number	2013234
Title	Proposed West Elevation Glen Avenue
Scale:	3/32" = 1'-0"
Sheet	A10

Glen Ann  
HOTEL

Mixed-Use Planned Unit  
Development  
Ann Arbor, Michigan



Revisions

12-01-14  
11-26-14  
11-10-14  
10-24-14

Date

10-17-14

Drawn

SB

Checked

GC

Approved

JS

Block Number

■ Preliminary  
□ Construction  
□ Record

Do not scale  
Use figured  
dimensions only

Job Number  
2013234

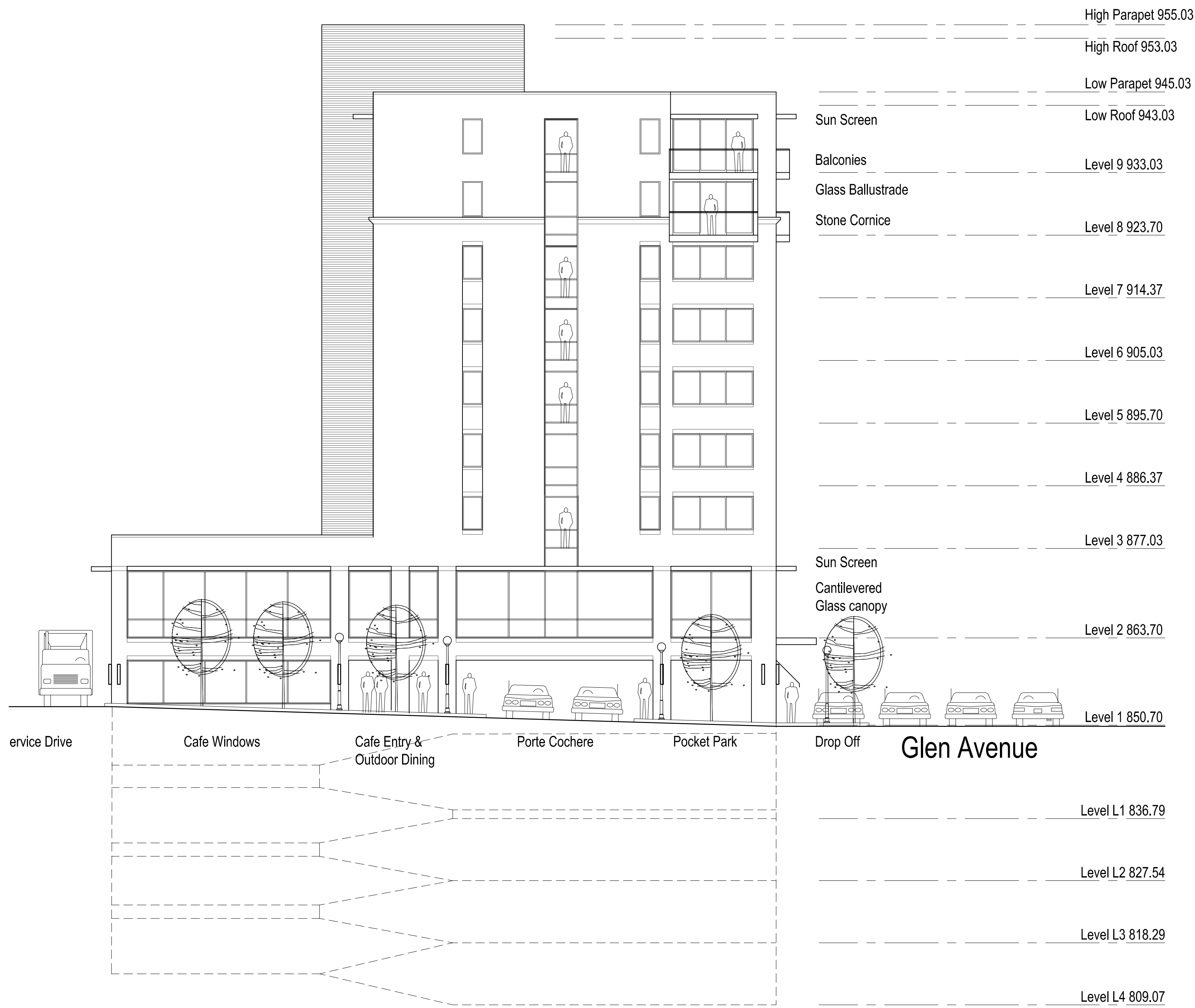
Title  
Proposed  
East Elevation

Scale: 3/32" = 1'-0"

Sheet  
A11

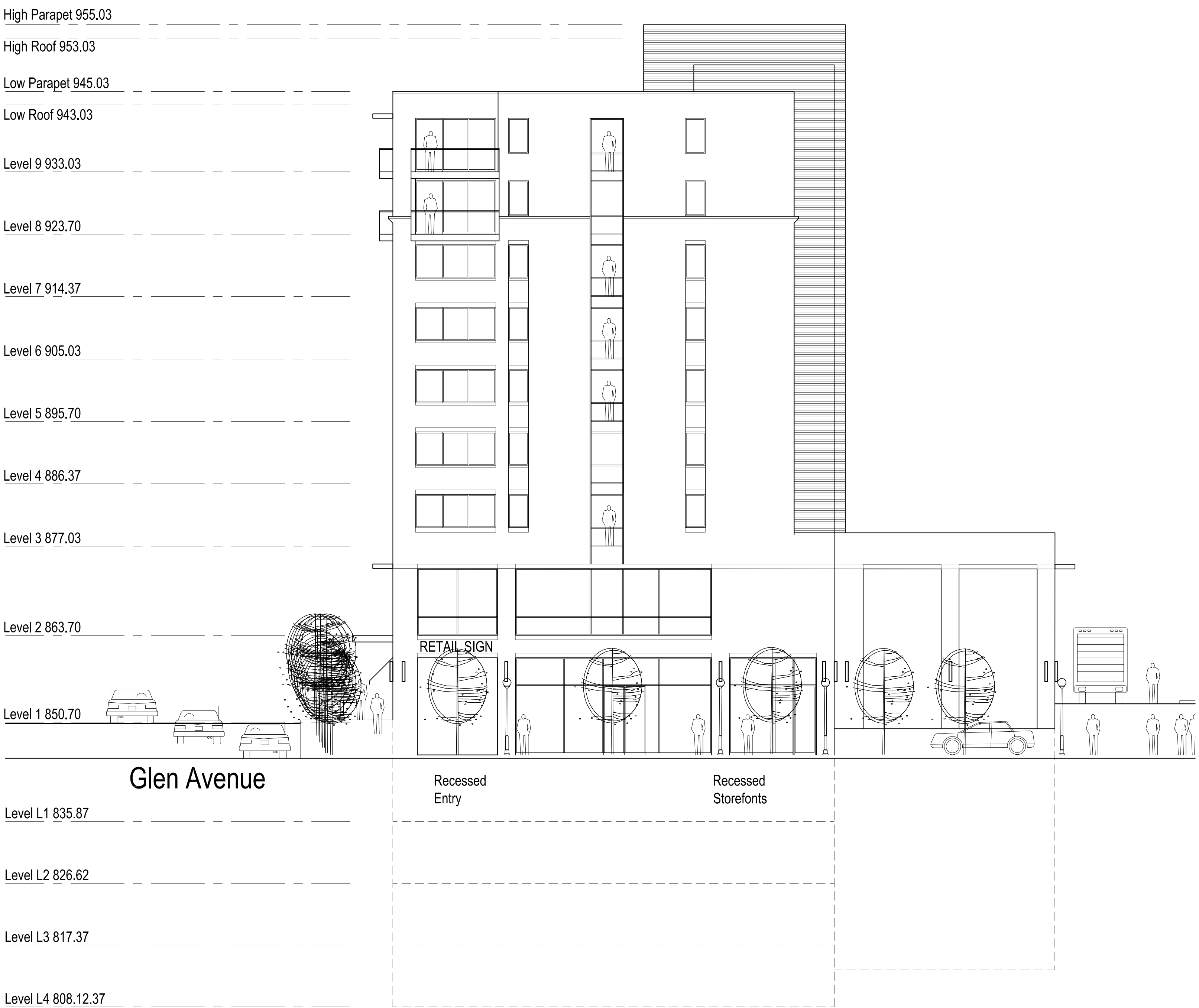
Glen Ann  
HOTEL

Mixed-Use Planned Unit  
Development  
Ann Arbor, Michigan



South Elevation- Ann Street

0 10 50 100 Feet



North Elevation- Catherine Street

0 10 50 100 Feet

Revisions

12-01-14	
11-26-14	
11-10-14	
10-24-14	
Date	<input checked="" type="checkbox"/> Preliminary
10-17-14	<input type="checkbox"/> Construction
Drawn	<input type="checkbox"/> Record
SB	
Checked	Do not scale
GC	Use figured
Approved	dimensions only
JS	
Blockpak Number	

Job Number  
**2013234**

Title  
**Proposed  
North and South  
Elevations**

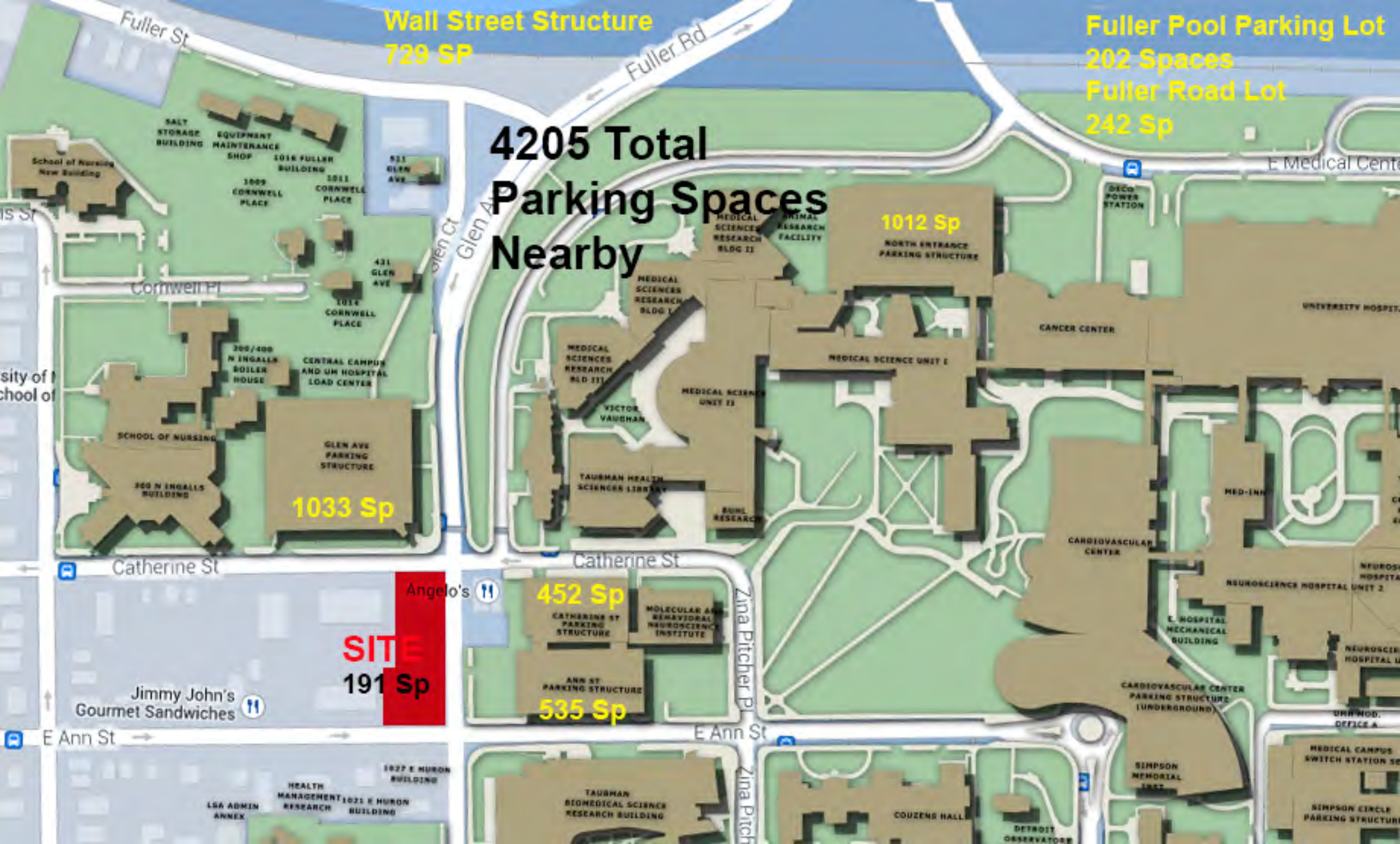
Scale: 3/32" = 1'-0"

Sheet  
**A12**

Glen Ann Hotel, Ann Arbor, MI 12-11-14

LEVEL	Total Area	Hotel Rooms	Hotel Suites	Hotel Area	DbI	Qn	King	Retail/Rest Area	Parking Area	Parking Spaces
R	2272			2272						
9	15894		17	15894			17			
8	15894		17	15894			17			
7	16381	32		16381		18	14			
6	16381	32		16381		18	14			
5	16381	32		16381		18	14			
4	16381	32		16381		18	14			
3	16381	32		16381		18	14			
2	21521			21521						
1	14815			6110				8256		
L1	21816								21816	47
L2	21816								21816	47
L3	21816								21816	47
L4	21816								21816	50
Total	239565	160	34	143596		90	104	8256	87264	191





Wall Street Structure  
729 SP

Fuller Pool Parking Lot  
202 Spaces  
Fuller Road Lot  
242 Sp

4205 Total  
Parking Spaces  
Nearby

1012 Sp  
NORTH ENTRANCE  
PARKING STRUCTURE

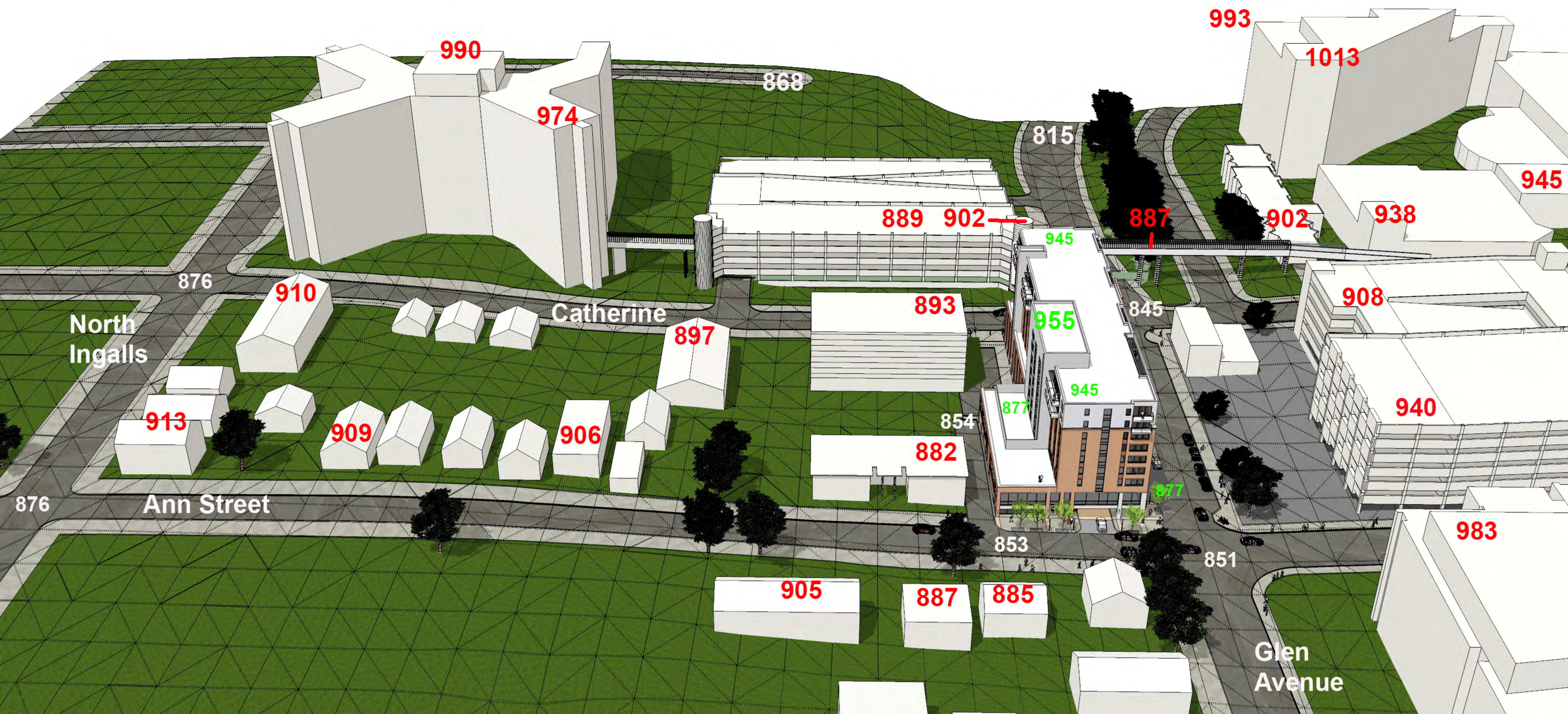
1033 Sp  
GLEN AVE  
PARKING STRUCTURE

452 Sp  
CATHERINE ST  
PARKING STRUCTURE

535 Sp  
ANN ST  
PARKING STRUCTURE

**SITE**  
191 Sp









Aerial View of Proposed Hotel looking Southwest





U of M  
Medical  
Sciences  
Research

U of M  
Taubman Health  
Research  
Library

Glen Ave  
Deck

Pedestrian  
Bridge

Catherine Street  
Deck

Ann Street  
Deck

Angelo's

Parking  
Lot

Parking  
Lot

Catherine Street  
Apartments

Parking  
Lots

Ann Street  
Apartments

U of M  
Taubman  
Biomedical  
Science  
Research

Ann

Glen

Rental  
Housing

Aerial View of Proposed Hotel looking Northwest