

SustainA²ble

Cultivating our people, place and potential



Sustainability Action Plan
City Council Work Session
October 13, 2014



City Council Priority

- Community Livability and Quality of Life
 - Problems: workforce housing, parks and greenbelt, public art
- Sustainability Framework as tool to identify strategic initiatives and action items



Sustainability Framework

- 16 overarching sustainability goals captured in four theme areas
- Adopted as policy guidance for the Master Plan in February 2013
- Furthers City Council Priorities
- Equity and Quality of Life throughout framework



Sustainability Framework available for download at: a2gov.org/masterplan



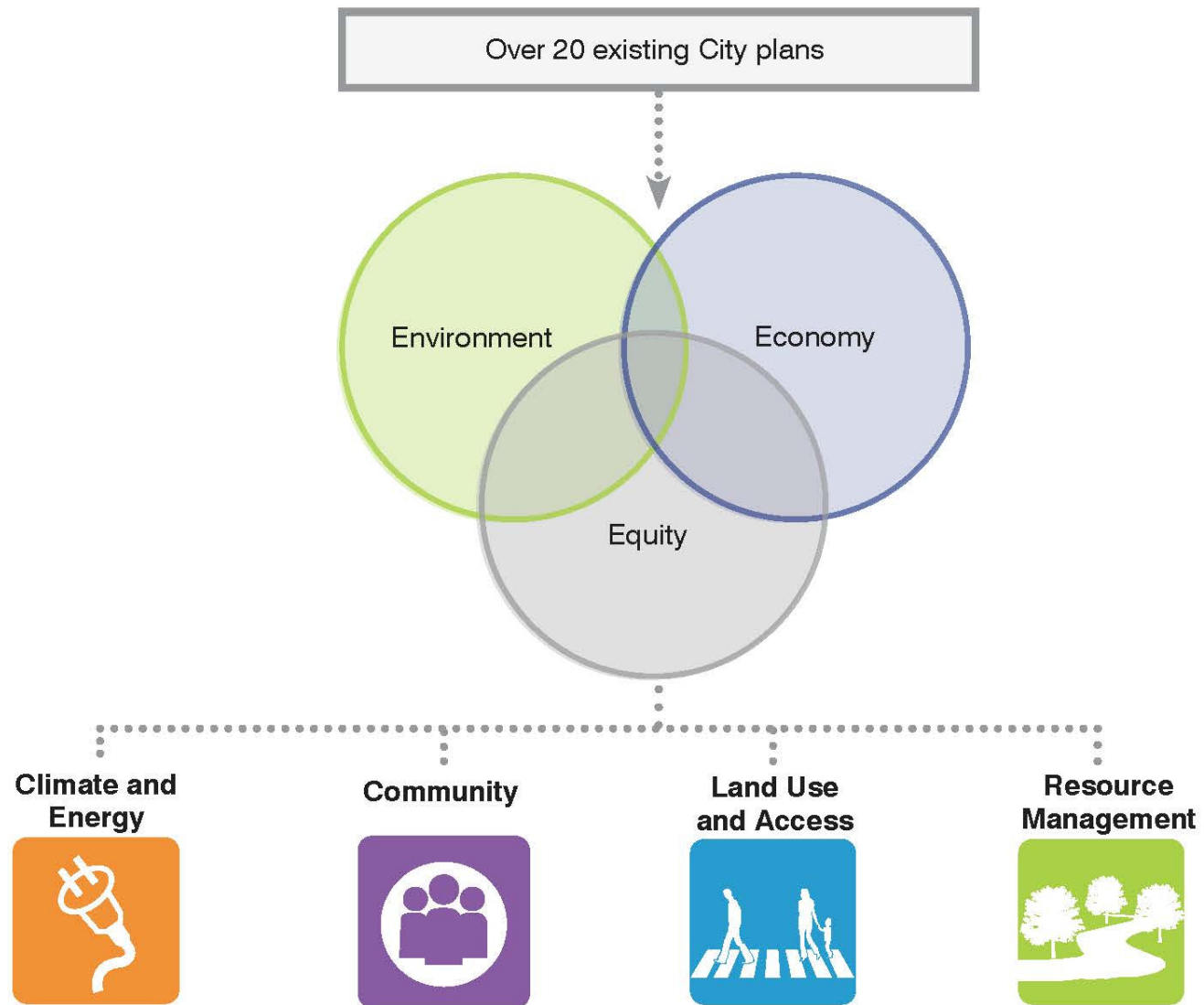
Why Create a Framework?

- Reorganization
- 200+ goals
- 25+ plans

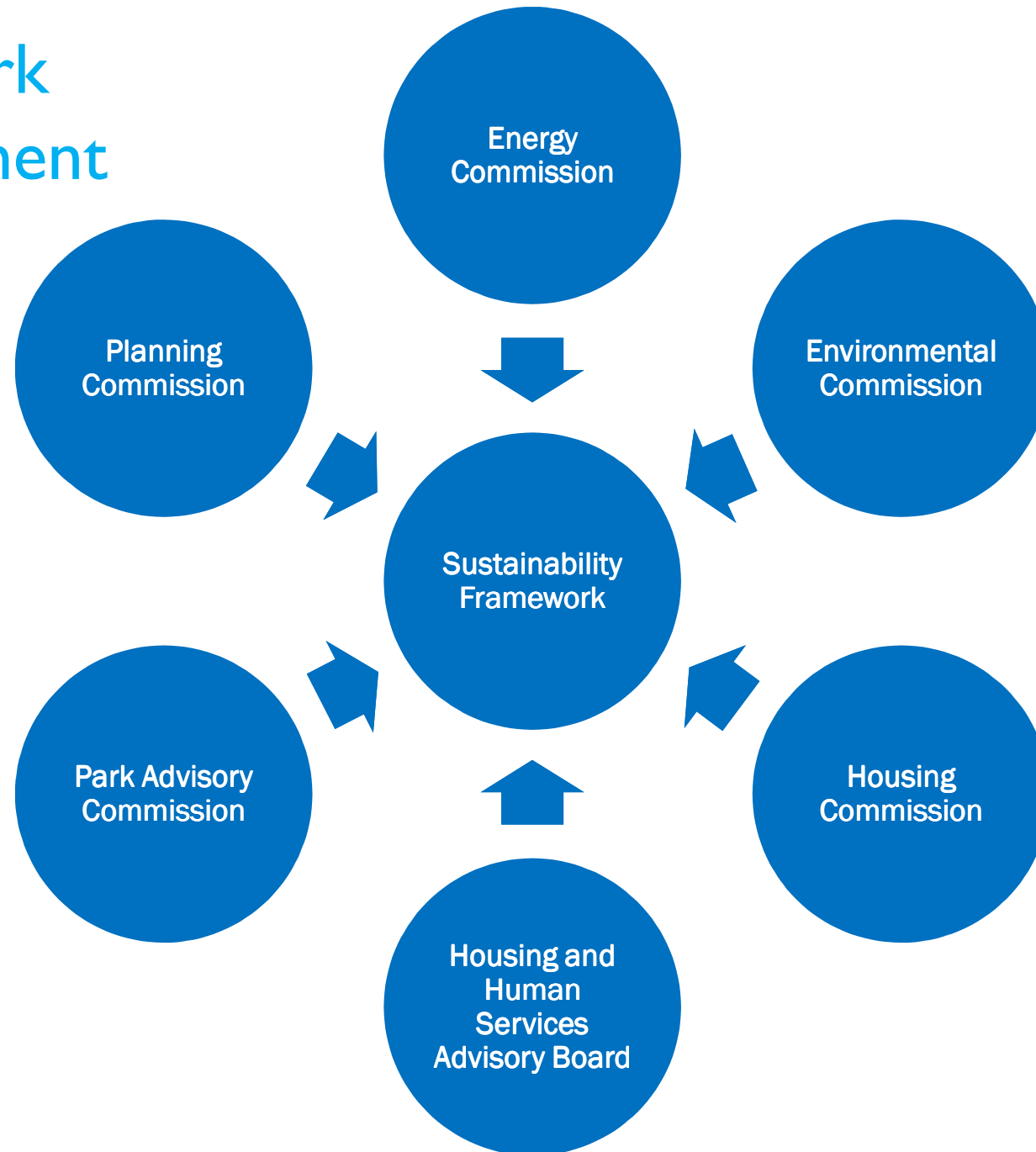
Plan

Transportation
Washtenaw County
Washtenaw Urban County
Natural Features
Water Treatment Facilities and Water Resources
Housing and Community Development
Millers Creek Watershed Improvement
Greenhouse Gas Emissions Reduction Strategy
Greenway Task Force
Downtown
Climate Action
Allen Creek Watershed Management
Affordable Housing Needs Assessment
Drinking Water Distribution System
Capital Improvements
Solid Waste
Energy
Huron River and Impoundment Management
Urban and Community Forest Management
Flood Mitigation
Land Use
Parks and Recreation and Open Space
Non-motorized Transportation
Wastewater Treatment Facilities
Malletts Creek Restoration
Stormwater
Solar





Framework Development



Provides a
common
vocabulary

Highlights
community
priorities

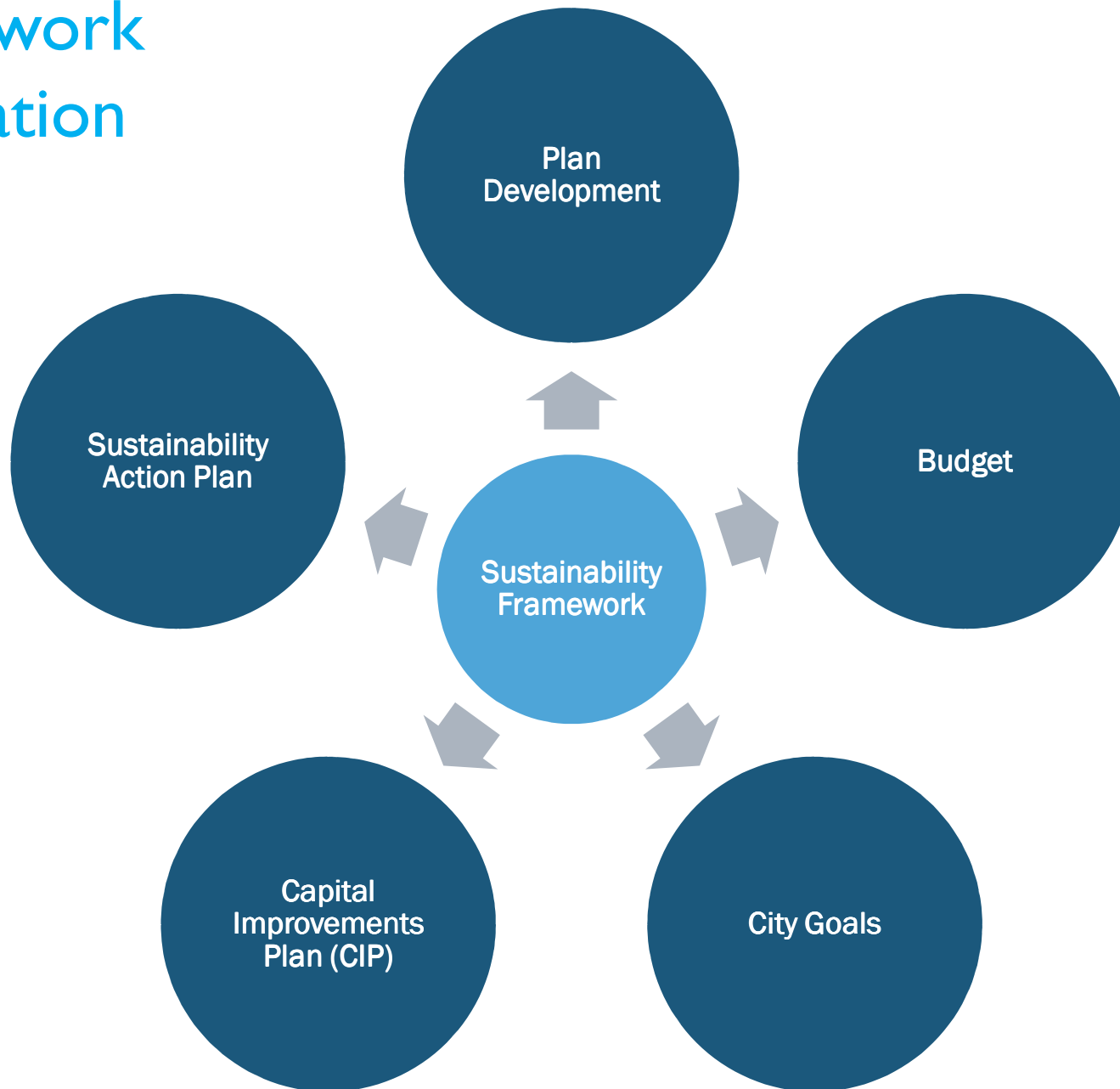
Benefits to
Framework

Requires
integration

Encourages
accountability



Framework Integration

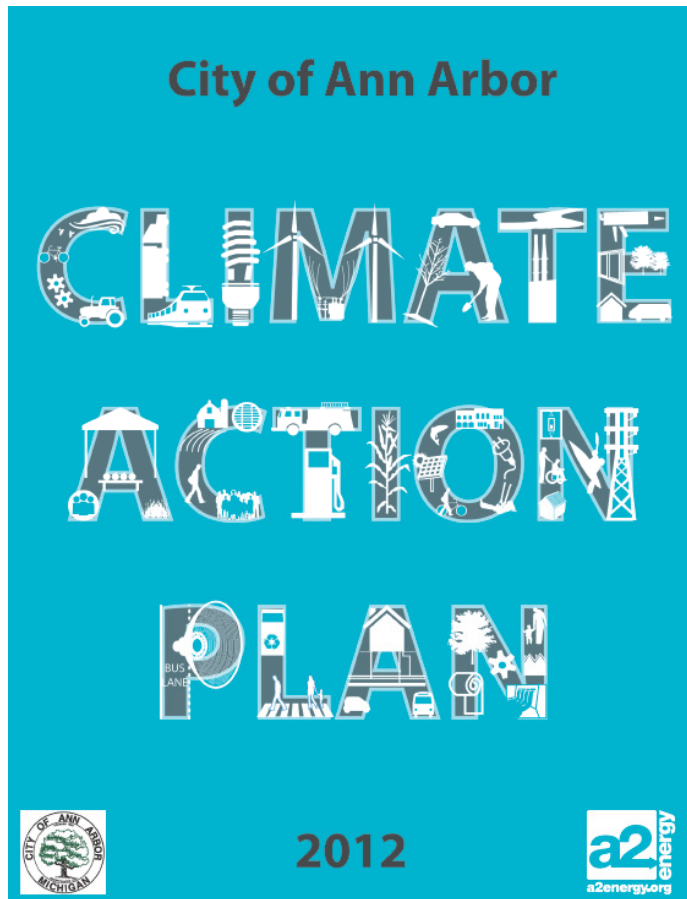


EXAMPLE: Capital Improvements Plan Sustainability Framework Scoring

Low ← → High			
0 Contributes to meeting 1 or less of the City's Sustainability Framework Goals	3 Modestly contributes to meeting two to three of the City's Sustainability Framework goals	7 Significantly contributes to meeting two or three of the City's Sustainability Framework goals OR modestly contributes to meeting four or more of the City's Sustainability Framework goals	10 Significantly contributes to meeting 4 or more of the City's Sustainability Framework goals



EXAMPLE: Plan Development



Draft **Waste Less:**
City of Ann Arbor
Solid Waste Resource Plan
Update 2013-2017



SOUTH STATE STREET CORRIDOR PLAN





Sustainability Action Plan

How do we make and track progress towards our goals?

Why Create an Action Plan?

- Connect goals to targets and actions
- Implementation tool (not an approved plan)
- Mechanism to track progress
- Increase staff accountability and collaboration
- Connect staff and city commissions
- Communicate current projects to the public



Action Plan Organization

Goal

Overarching, long-term

Target

Measurable, short-term,
communicates progress
towards goal

Action

Step to reach a target

Indicator

Measuring tool



Targets and Actions

Where did they come from?

- Budget goals
- Existing plans and resolutions
- Staff one-on-ones

Goals		Primary Unit	Supporting Unit(s)	Target Source(s)
Community	Economic Vitality	Community and Economic Development	Planning and Development, Downtown Development Authority	Redevelopment Ready Community Best Practices Report, DDA, new

Example from Goal Overview Chart on p.4 of the draft Sustainability Action Plan



Collaboration

- At the staff level
- Across organizations (ex. DDA, Washtenaw County)
- With boards and commissions
- Alignment with City Council priorities



Goals		Primary Unit	Supporting Unit(s)
Community	Safe Community	Police	Systems Planning, Planning and Development, Emergency Management, Housing Commission

Example from Goal Overview Chart on p.4 of the draft Sustainability Action Plan



Safe Community

Minimize risk to public health and property from manmade and natural hazards



Target CM 11: Inform the public of local hazards that affect the community and on disaster preparedness resources (Emergency Management)

Actions

- Leverage publications and information supplied by the Michigan State Police Emergency Management/Homeland Security Division, Federal Emergency Management Agency, and Red Cross Ready Programs (Emergency Management)
- Work with the Communications Office to effectively send out hazard awareness and disaster preparedness information to the public through local media and City information systems (Emergency Management)
- Increase signups for the CodeRED emergency notification system (Emergency Management)

Indicators

- | | |
|--|---|
| <ul style="list-style-type: none">• Structures in the Floodplain• Number of Reoccupation Applications• Percent Public Housing Units with Safety Improvements | <ul style="list-style-type: none">• Number of Rental Housing Inspections• Perception of Public Safety (Police Budget Goal)• CodeRED Signups |
|--|---|

Diverse Housing

Provide high quality, safe, efficient, and affordable housing choices to meet the current and future needs of our community, particularly for homeless and low-income households



Target CM 3: Rehabilitate public housing units to meet the Enterprise Green Standards (Housing Commission)

Actions

- Convert to all CFL and LED lighting, motion sensor and light sensor where appropriate (Housing Commission)
- Install Energy Star appliances and windows (Housing Commission)
- Increase air sealing and insulation in public housing units (Housing Commission)

Indicators

- Percent of Public Housing Units Meeting Enterprise Green Standards
- Number of Affordable Housing Units

Active Living & Learning

Improve quality of life by providing diverse cultural, recreational, and educational opportunities for all members of our community



Target CM 14: Achieve and maintain a balanced park, recreation, and open space system, accessible to all of the community (PROS Plan)

Actions

- Develop strategies to identify and accommodate groups which are not currently receiving or participating in recreation services (PROS Plan)
- Enhance and encourage opportunities to provide scholarships for residents who would benefit from this service (PROS Plan)
- Enhance opportunities to provide cultural activities (music, dance, crafts, theater, arts, etc.) (PROS Plan)

Indicators

- Number of Volunteers Enrolled in Adopt-a-Park Program
- Scholarships Awarded for Parks & Recreation Programs
- Number of Participants in Parks & Recreation Activity Programs

Economic Vitality

Develop a prosperous, resilient local economy that provides opportunity by creating jobs, retaining and attracting talent, supporting a diversity of businesses across all sectors, and rewarding investment in our community



Target CM 16: Remove development barriers by building deliberate, fair, and consistent processes (Planning and Development)

Actions

- Certify the City of Ann Arbor as a redevelopment ready community through the Michigan Economic Development Corporation (new)
- Complete the Zoning Ordinance Reorganization effort (new)

Indicators

- Assessed Value
- GDP
- Value of Building and Construction Permits
- Number of Employees and Businesses

Connection to Council Priorities

- Equity and quality of life incorporated throughout
- Community vision of sustainability
- Set actions and targets to make progress towards goals



Next Steps

- Target and action setting
 - Align with 2-year budget cycle
 - Commission work plans
- Track progress towards goals
- Communicate progress through online reporting (e.g., State of Our Sustainability Report)
- Connect to and further City Council Priorities



Questions?

Jamie Kidwell
Sustainability Associate
jkidwell@a2gov.org

Wendy Rampson
Planning Manager
wrampson@a2gov.org

Matthew Naud
Environmental Coordinator
mnaud@a2gov.org

