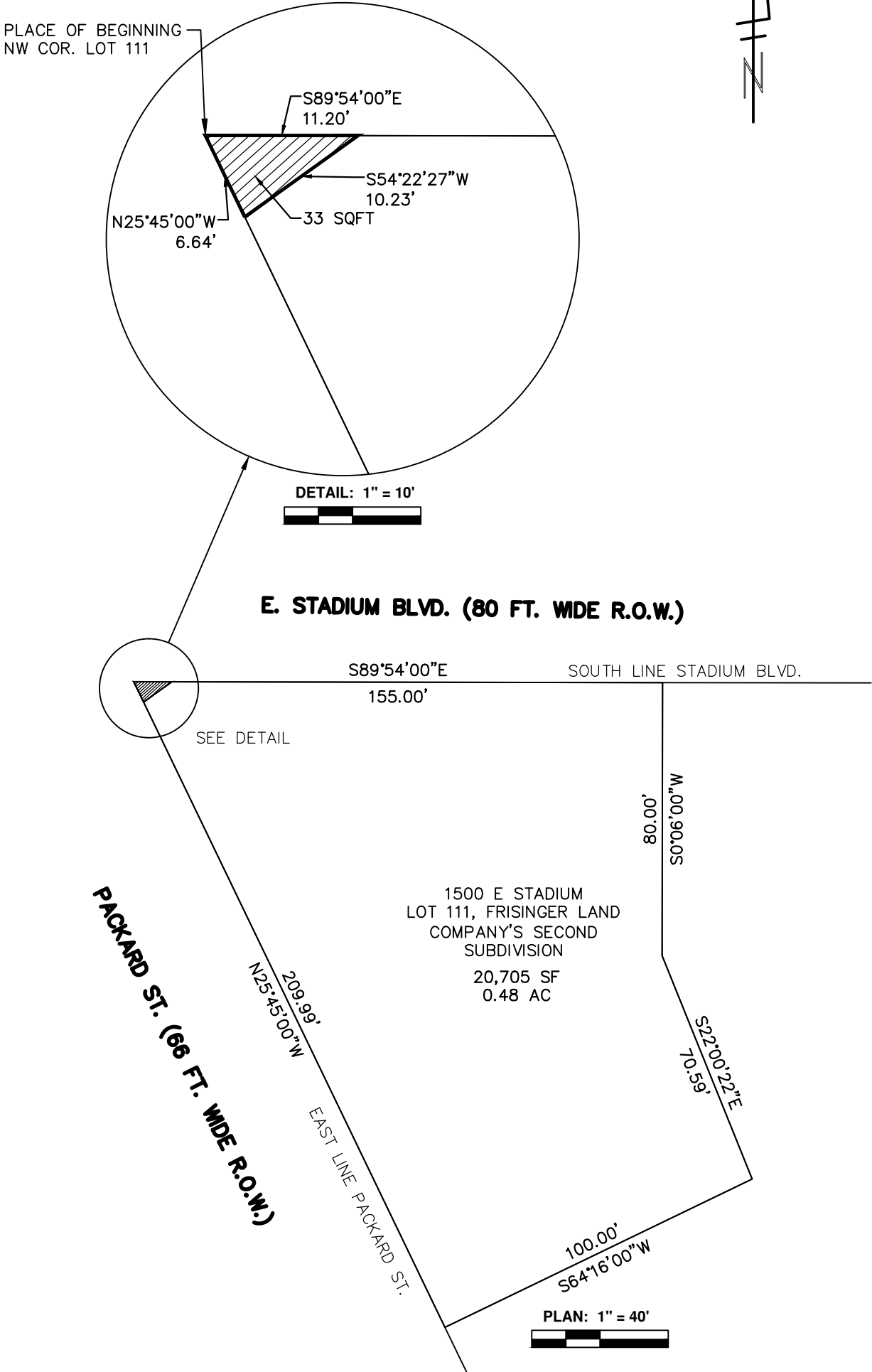


R.O.W. SIDEWALK EASEMENT
EAST STADIUM BLVD. IMPROVEMENT PROJECT
1500 E. STADIUM BLVD.



PROJECT MANAGEMENT SERVICE UNIT

CITY OF ANN ARBOR PUBLIC SERVICE
301 EAST HURON STREET, P.O. BOX 8647
ANN ARBOR, MICHIGAN 48107-8647
734-794-6410 www.a2gov.org

DRAWING TITLE

R.O.W. SIDEWALK EASEMENT
EAST STADIUM BLVD. IMPROVEMENT PROJECT
1500 E. STADIUM BLVD.

		MS	GD
		DR.	CH.
REVISIONS	REV. DATE		

DRAWING NO.

2011032-1

SHEET NO.

1 OF 2

VARIABLE WIDTH R.O.W. SIDEWALK EASEMENT DESCRIBED AS FOLLOWS:

BEGINNING at the northwest corner of Lot 111, “Frisinger Land Company’s Second Subdivision”, as recorded in Liber 9 of plats, page 37, Washtenaw County Records; Thence S89°54’00”E 11.20 feet along the north line of said Lot 111, said north line also being the southerly right of way line of East Stadium Blvd.(80 ft. wd.); Thence S54°22’27”W 10.23 feet; Thence N25°45’00”W 6.64 feet along the west line of Lot 111, said west line also being the easterly right of way line of Packard St.(66 ft. wd.), to the PLACE OF BEGINNING, being a part of the south ½ of section 33, T2S, R6E, in the City of Ann Arbor, Washtenaw County, Michigan, Containing 33 square feet of land, more or less.



PROJECT MANAGEMENT SERVICE UNIT

CITY OF ANN ARBOR PUBLIC SERVICE
301 EAST HURON STREET, P.O. BOX 8647
ANN ARBOR, MICHIGAN 48107-8647
734-794-6410 www.a2gov.org

DRAWING TITLE

R.O.W. SIDEWALK EASEMENT
EAST STADIUM BLVD. IMPROVEMENT PROJECT
1500 E. STADIUM BLVD.

		MS	GD	DRAWING NO.	SHEET NO.
REVISIONS	REV. DATE	DR.	CH.	2011032-2	2 OF 2