



Ph: 616.949.2385

Fx: 616.949.2290

3901 3 Mile Rd. NW  
Grand Rapids, MI. 49534

www.fredricksonsupply.com

SALES QUOTE	
Date	Quote #
07/24/24	2046

Bill To:
City of Ann Arbor 721 N Main St Ann Arbor, MI 48107

Ship To:
City of Ann Arbor Attn: CJ 721 N Main St Ann Arbor, MI 48107

PO Number	Terms	Rep	Ship Date	Via	FOB	Project
	Net 30	Todd	TBD		Ann Arbor	

Quantity	Item Code	Description	Price per quantity	Amount
1		Labrie 31 yd RH Automizer Specs Attached ACX 64 Specs Attached		0.00
1		Sourcewell Quote #110223-LEG Body per specifications	242,630.40	242,630.40
1		Chassis per specifications Includes Local Delivery, PDI and Training	218,501	218,501.00
		**Diesel Chassis** ***Pendulum Packer in Body***		

**Delivered Price** \$461,131.40

\*Quotes are good for 30 days unless otherwise noted.

\*Quote is subject to manufacturer surcharges

<b>Proposed by Fredrickson Supply</b>
Todd Fredrickson
Printed: Todd Fredrickson

<b>Accepted by Customer</b>
Printed:



**Fredrickson Supply**  
**3901 3 Mile Rd NW**  
**Grand Rapids, MI 49534**

**(616) 949-2385**  
**www.fredricksonsupply.com**

SALES QUOTE ORDER FORM		
Quote #		Quoted Date
2046		07-24-2024
	<b>Terms</b>	
	Net 30 Days	

SOLD TO	SHIP TO	END CLIENT
<b>Fredrickson Supply LLC</b> 3901 3 Mile Rd NW Grand Rapids, MI 49534 United States  Email : Phone : 616-949-2385	<b>Fredrickson Supply LLC</b> 3901 3 Mile Rd NW Grand Rapids, MI 49534 United States  Email : Phone :	<b>City of Ann Arbor</b> 721 N Main St Ann Arbor, MI 48107 United States  Email : Phone : 734-994-2815

CHASSIS INFORMATION	
<b>Chassis Provided By :</b> Supplied by Customer <b>Chassis Manufacturer :</b> Autocar <b>Chassis Model :</b> ACX <b>Cab Style :</b> Cab Over <b>Drivetrain :</b> 6X4 <b>Auxiliary Axle :</b> Without Auxiliary Axle <b>CNG System Upon Arrival :</b> Without <b>Driving Configuration at Delivery :</b> Sit-Down from Company on Curbside Only <b>Chassis Delivery Address :</b> Canada: 175-B Rte. Marie-Victorin, Lévis, QC, Canada G7A 2T3	<b>Engine Make :</b> Cummins <b>Engine Model :</b> X12 <b>Engine Power :</b> Engine HP NOT Required <b>Engine Torque :</b> Engine Torque NOT Required <b>Transmission Make :</b> Allison <b>Transmission Model :</b> RDS 4000 Series WTEC 4 & 5 <b>Transmission Type :</b> Automatic Transmission

COLOR INFORMATION	
<b>Cab Color :</b> Gray from Factory <b>Body Color :</b> Gray <b>Chassis Color :</b> Black from Factory <b>Paint Scheme Number :</b> Without	<b>Cab Color Code :</b> N1193 <b>Body Color Code :</b> L1193 <b>Chassis Color Code :</b> Color Code NOT Required <b>Match Cab :</b> Yes

CARTS INFORMATION	
<b>Cart Make :</b> Without or NOT Required <b>Cart Capacity :</b> Without or NOT Required	<b>Cart Type :</b> Without or NOT Required

BODY CONFIGURATION	
<b>Body Model :</b> AUTOMIZER TTD <b>Arm Model :</b> Single Right-Hand (Curb) <b>Body Type :</b> Standard <b>Body Division :</b> Without Divison	<b>Total Capacity :</b> 31yd <sup>3</sup> (27+4) <b>Body Capacity :</b> 27yd <sup>3</sup> <b>Tailgate Capacity :</b> 4yd <sup>3</sup>

<b>BASE PRICE</b>	<b>162,580.00\$</b>
-------------------	---------------------

OPTIONS			
#	Category	Option   Description	Price
2	Lifting	ALHG-STD01   Standard Height Gripper	0.00 \$
3	Lifting	AGRA-0010   Heavy Duty Arm & Gripper, "32 to 95 US gal"	3,900.00 \$
4	Lifting	EAOA-STD01   Arm out alarm at 6 km/h - 4 mph	0.00 \$
#	Category	Option   Description	Price
5	Hopper Area	BCPH-5744   Crusher Panel (1) for Pendulum	7,390.00 \$
6	Hopper Area	QUSS-0000   Crusher Panel Full Width	0.00 \$
7	Hopper Area	HAPT-0000   PENDULUM Type Packer Panel	16,980.00 \$



**Fredrickson Supply**  
**3901 3 Mile Rd NW**  
**Grand Rapids, MI 49534**

**(616) 949-2385**  
**www.fredricksonsupply.com**

SALES QUOTE ORDER FORM		
Quote #		Quoted Date
2046		07-24-2024
	Terms	
	Net 30 Days	

#	Category	Option   Description	Price
8	Consoles & Controls	AAAC-0050   Auxiliary Arm Controls Inside Cab on Curbside	1,190.00 \$
9	Consoles & Controls	AAJC-STD01   Single Arm Joystick NON-Moveable	0.00 \$
10	Consoles & Controls	ATJC-STD01   Grabber Control on Joystick	0.00 \$
#	Category	Option   Description	Price
11	Hydraulic	HHFR-7811   Alarm for Return Filter Replacement W/Automatic Pump shutoff	880.00 \$
12	Hydraulic	HCON-STD01   JIC	0.00 \$
13	Hydraulic	HHOC-0000   Hydraulic Oil Cooler	3,900.00 \$
14	Hydraulic	HPTO-0040   PTO Chlesea 870 Hot Shift for Remote Pump	3,490.00 \$
15	Hydraulic	CCPM-INC01   Dual Pump Denison T6DC Work-at-Idle (Remote)	0.00 \$
16	Hydraulic	CHFT-STD02   Hydraulic Tank Mounted on Chassis	0.00 \$
17	Hydraulic	EBCV-0010   Electric Over Hydraulic Body Main Valve	1,620.00 \$
18	Hydraulic	HPCR-0000   Regen Valve on Packer Cylinders	2,180.00 \$
#	Category	Option   Description	Price
19	Accessories	BCOT-0000   Broom and Shovel Front of Hopper on Curbside & Hoe Front of Hopper on Streetside	460.00 \$
20	Accessories	BFEX-0010   Fire Extinguisher 20 lbs (1) on Rubrail Curbside (Rear) Vertical	450.00 \$
21	Accessories	BBTS-STD01   Standard Tailgate Seal	0.00 \$
22	Accessories	CCTB-0000   Toolbox on Chassis Aluminium 24"D x 24"H x 24"W (Swing Door)	1,820.00 \$
#	Category	Option   Description	Price
23	Lighting	LLPA-0010   Add. Lights on Tg.: 2/3 Lightbar + Central Brake Light + Multifunctions Lights (4) (X Pattern)	1,260.00 \$
24	Lighting	LBLR-0025   Backup Lights on Rubrails Mid-Body - LED (2)	790.00 \$
25	Lighting	LWLK-0025   Work Light Package - LED (2)	790.00 \$
26	Lighting	WL01-0000   Hopper Streetside (1)	0.00 \$
27	Lighting	WL04-0000   Rail Curbside (4)	0.00 \$
28	Lighting	LAFF-0050   Alternating Flashing Lights 4" Amber on Front of Body - LED (2)	700.00 \$
29	Lighting	LSSO-6471   Program Strobe and/or Flashing Light(s) ON by Manual Switch Only When Pump is ON	380.00 \$
#	Category	Option   Description	Price
30	Electronic	CCCC-7453   6X 3rd Eye Camera(s) - 4X Standard Position(s) With Heater/Without Shutter + UDU 64GB DVR + WU	8,180.00 \$
31	Electronic	CSAC-INC01   External MDVR 3rd Eye (64GB)	0.00 \$
32	Electronic	CL01-0000   Tailgate Center 2/3 (1) - Pointing Back	0.00 \$
33	Electronic	CL04-0000   Hopper Streetside (4) - Pointing Curbside	0.00 \$
34	Electronic	CL05-0000   Post Curbside (5) - Pointing Curbside	0.00 \$
35	Electronic	CL16-0000   Mirror Curbside (16) - Pointing Back	0.00 \$
36	Electronic	CCCM-0003   3rd Eye 7" Color Monitor (AWT07MLED) (5 Channels)	270.00 \$
37	Electronic	CCML-INC01   On Ceiling, Centered, Near the Windshield (If Possible)	0.00 \$
38	Electronic	CCMM-STD01   Monitor Mounting Brackets for Labrie Standard Installation	0.00 \$
39	Electronic	AGCD-5329   Cart/Container Counting Device on Arm(s) + Signal Sent to an Output on Console	440.00 \$
40	Electronic	MSPP-0000   Multiplex Password Protection	360.00 \$



**Fredrickson Supply**  
**3901 3 Mile Rd NW**  
**Grand Rapids, MI 49534**

**(616) 949-2385**  
**www.fredricksonsupply.com**

SALES QUOTE ORDER FORM		
Quote #		Quoted Date
2046		07-24-2024
	Terms	
	Net 30 Days	

#	Category	Option	Description	Price
41	Electrical	ESYV-STD01	12V Body Electrical System	0.00 \$
#	Category	Option	Description	Price
42	Service & Maintenance	BSAL-7812	Lincoln Auto-Lube System for Right Hand Arm and Packer. Filling Module on Body – 48 Points	13,020.00 \$
#	Category	Option	Description	Price
43	Structure, Liners & Materials	BSFL-0020	Body floor liner Full Length x 4mm (0.160") - Hardox 450	3,000.00 \$
44	Structure, Liners & Materials	BHWS-0000	Hopper Floor Liner 1/4" - Hardox 450	1,290.00 \$
#	Category	Option	Description	Price
45	Unit Appearance	PCBP-STD01	Urethane Body Paint	0.00 \$
46	Unit Appearance	UAPP-STD01	One (1) Coat of Urethane Primer	0.00 \$
47	Unit Appearance	PCCP-STD01	Paint Chassis Components same Color as Chassis	0.00 \$
48	Unit Appearance	PSSS-0020	CAUTION THIS VEHICLE [...] STOPS STAY BACK 50 FEET, 65" x 20" (Red on White)	320.00 \$
49	Unit Appearance	BASA-STD01	Rubber Mud Guards - Rear of Rear Axle	0.00 \$
50	Unit Appearance	BASR-0000	Anti-sail Bars on Rear Mud Guards (Rear Wheels)	190.00 \$
51	Unit Appearance	BASN-STD01	Mud Guards with Labrie Logo	0.00 \$
52	Unit Appearance	BODL-STD01	Informative Decals English	0.00 \$
#	Category	Option	Description	Price
53	Chassis	CFTD-STD01	Diesel Tank from Company or CNG/Electric	0.00 \$
<b>SUBTOTAL OPTIONS :</b>				<b>75,250.00\$</b>
NON-STANDARD OPTIONS				
<b>SUBTOTAL NON-STANDARD OPTIONS :</b>				<b>0.00\$</b>
COMMENTS				
INCLUDED in price (By Fredrickson Supply): * Local delivery, PDI and Training; NET: \$5,000.00 USD				



**Fredrickson Supply**  
**3901 3 Mile Rd NW**  
**Grand Rapids, MI 49534**

**(616) 949-2385**  
**www.fredricksonsupply.com**

SALES QUOTE ORDER FORM		
Quote #		Quoted Date
2046		07-17-2024
	<b>Terms</b>	
	Net 30 Days	

Expected Delivery Date :		Subtotal Base Price and Options :	237,830.00 \$
		Discount (2.00%) :	4,756.60 \$
		<b>Subtotal Base Price and Options (Net) :</b>	<b>233,073.40 \$</b>
<b>Chassis Terms (if applicable) :</b> Net on delivery for release of MSO.		Body Miscellaneous Charge #1 :	0.00 \$
<b>Weight Distribution:</b> Quotes and pricing are subject to changes according to WD analysis which can alter specs. Upon receipt of PO and chassis specs, WD will be conducted and a confirmation of acceptance will be issued.		Body Miscellaneous Charge #2 :	0.00 \$
<b>Taxes :</b> Not Included.		Body Miscellaneous Charge #3 :	0.00 \$
<b>Disclaimer :</b> It is the quoting distributor's responsibility to verify the accuracy of this quote versus the specifications for the body and chassis. Labrie Environmental Group will not be responsible for any price differential between this quotation and what is required by the provided specifications. Interest fees on past due account of 1.5% per month (18% annual). Price list subject to change at all time due to the steel price index.  Labrie Environmental Group (LEG) does not accept floorplan charges, back charges, liquidated damages or third-party claims for any reason or cause, whether expressed or implied by specifications or other form of communication, including purchase order terms and conditions unless approved in writing by CEO or CFO at time of quotation.  Labrie Environmental Group (LEG) and/or seller shall not be responsible for any failure to perform, or delay in performance of, its obligations resulting from the COVID-19 pandemic or any future epidemic.		Sourcewell Fee :	0.00 \$
		Material Surcharge :	0.00 \$
		Extended Warranty :	0.00 \$
		Extended Warranty Other :	0.00 \$
		Additional Trade Discount :	0.00 \$
		<b>Subtotal Body (Net) :</b>	<b>233,073.40 \$</b>
		Chassis Price :	0.00 \$
		<b>Subtotal Unit (Net) :</b>	<b>233,073.40 \$</b>
		FET (12%) :	0.00 \$
		Change Fee #1 :	0.00 \$
		Change Fee #2 :	0.00 \$
		EV Fee :	0.00 \$
		Miscellaneous Charge #1 :	5,000.00 \$
		Miscellaneous Charge #2 :	0.00 \$
		Miscellaneous Charge #3 :	0.00 \$
		Freight Charges :	4,557.00 \$
		<b>Total Unit (Net) :</b>	<b>242,630.40 \$</b>
		Number of Units :	2
		<b>Grand Total :</b>	<b>485,260.80 \$</b>
		Currency :	USD

\_\_\_\_\_  
 City of Ann Arbor Representative

\_\_\_\_\_  
 Fredrickson Supply Representative

# Chassis Specification

07/26/2024

		Description	Front Weight	Rear Weight
<b>AUTOCAR TRUCKS</b>				
O	ENG0001	<b>ENGINEERING GROUP IDENTIFIER</b>	AUTOCAR ENGINEERING	0 0
S	0040002	<b>MODELS</b>	ACX64	10,431 6,154
O	5000002	<b>CAB SHELL</b>	SINGLE RIGHT HAND DRIVE CAB	0 0
O	100U001	<b>CUSTOMER TYPE</b>	MUNICIPAL	0 0
<b>VEHICLE ADAPTATION</b>				
S	114010	<b>COUNTRY OF USE</b>	UNITED STATES STD MARKET ADAPTATION	0 0
O	C03500	<b>TERRITORY</b>	EPA	0 0
<b>SOLUTION</b>				
O	C04006	<b>BODY COMPANY</b>	LABRIE	0 0
O	C02004	<b>BODY TYPE</b>	AUTOMATED SIDE LOADER	0 0
S	C070001	<b>FUEL SYSTEM TYPE</b>	DIESEL	0 0
O	C002004	<b>TRUCK TYPE (WRENCH CODE)</b>	ASL, LABRIE, WB 222, NO AUX AXLE, DIESEL, WITH DUMP	0 0
O	C06502	<b>BODY STYLE</b>	LABRIE AUTOMIZER	0 0
O	C05031	<b>TOTAL BODY CAPACITY - BODY/HOPPER</b>	31 YARD	0 0
S	C090003	<b>AXLE QUANTITY</b>	3 AXLE	0 0
S	C080001	<b>REAR SUSPENSION TYPE</b>	STD/BEAM TYPE REAR SUSPENSION	0 0
O	C01003	<b>APPLICATION</b>	REFUSE - LANDFILL	0 0
O	C11006	<b>BODY COMPANY SERVICE OPTION</b>	CONTAINER DUMP	0 0
O	D010200	<b>FRONT GAWR</b>	20000 LBS	0 0
O	D020460	<b>REAR GAWR</b>	46000 LBS	0 0
O	D100660	<b>GVWR</b>	66000 LBS	0 0
<b>ENGINE</b>				
O	1012300	<b>ENGINE ASSY</b>	X12, 350HP / 2000RPM / 1350 LB-FT, CUMMINS	0 0
O	972A1000	<b>SPECIAL EMISSION CERTIFICATION LABELS</b>	EPA CLEAN IDLE LABEL (DIESEL)	0 0
S	9722024	<b>CERTIFICATION-EMISSIONS</b>	MY2024 ENGINE	0 0
S	972B001	<b>LEGACY ENGINE VOLUME PENALTY</b>	NO PENALTY	0 0
S	4460001	<b>FUEL TYPE</b>	ULTRA-LOW SULPHUR DIESEL FUEL REQUIRED	0 0
<b>ENGINE EQUIP</b>				

S	128071	<b>ENGINE CONTROL SPECIFICATIONS</b>	DEFAULT SPECS	0	0
S	1290004	<b>ENGINE ELECTRONICS</b>	CUMMINS 500K COMMUNICATION	0	0
O	4382004	<b>FILTER-FUEL, CHASSIS MOUNTED</b>	DAVCO 386 FILTER W/O 12V HEAT, WITH H2O PROBE	0	0
O	170025	<b>FILTER-FUEL, ENGINE MOUNTED</b>	CUMMINS SPIN-ON FILTER	-5	0
O	1760001	<b>ENGINE OIL SAMPLING PROVISION</b>	ENGINE OIL SAMPLING PORT	1	0
O	180021	<b>ENGINE BLOCK HEATER</b>	PHILLIPS 120V 1500W	5	0
O	1810003	<b>HEATER RECEPTICAL LOCATION-ENGINE</b>	RECEPTACLE LOCATED AT CAB STEPS, RH SIDE	0	0
S	2080001	<b>FAN &amp; DRIVE-ENGINE</b>	2-SPEED FAN	0	0
S	2120003	<b>RADIATOR SURGE TANK</b>	STANDARD SURGE TANK W/ SIGHT GLASS	0	0
S	2200001	<b>AIR CLEANER</b>	15" ONE STAGE EPG CLEANER DONALDSON	0	0
S	226001	<b>AIR INTAKE RAIN CAP</b>	BLACK, HOOD TYPE	0	0
O	2302001	<b>MUFFLER SYSTEM</b>	LH VERT HORIZ DPF/SCR	0	0
S	2310003	<b>EXHAUST SHIELDS</b>	DPF & SCR SHIELDS	0	0
O	2320011	<b>EXHAUST STACKS</b>	STAINLESS STEEL STACK W/TURN OUT	0	0
O	234001	<b>EXHAUST RAIN CAP</b>	SINGLE	1	0
S	115A200	<b>TURBO HEAT SHIELD</b>	TURBO HEAT SHIELD	0	0
S	2390002	<b>UREA DELIVERY SYSTEM</b>	OVER-FENDER MTD., LH SIDE, 10 GAL. CAPACITY	0	0
S	5300001	<b>ENGINE/EXHAUST COVER</b>	ALUM TURBO/EXHAUST PIPE DEBRIS SHIELD	0	0
O	7002000	<b>AIR COMPRESSOR</b>	CUMMINS WABCO 25.9 CFM COMPRESSOR	0	0
S	8200003	<b>STARTING MOTOR</b>	DELCO REMY 12V 39 MT W/OCF	0	0
S	8020004	<b>ALTERNATOR</b>	DELCO REMY 36SI 12V 160 AMP	13	0
O	P020002	<b>ENGINE IDLE SHUT DOWN</b>	ENGINE IDLE SHUT DOWN DISABLED	0	0
S	P030001	<b>CRUISE CONTROL PARAMETER</b>	CRUISE CONTROL ENABLED	0	0
S	P630006	<b>MAX VEHICLE SPEED - PTO MODE</b>	MAX VEHICLE SPEED IN PTO MODE = 6 MPH	0	0
S	P641200	<b>RPM PTO MODE</b>	1200 RPM MAX IN PTO	0	0
S	P701200	<b>PTO SET SWITCH</b>	PTO SET SWITCH = 1200 RPM	0	0
S	P711000	<b>PTO RESUME SWITCH</b>	PTO RESUME SWITCH = 1000 RPM	0	0
S	204B001	<b>COOLANT HOSE HEAT SLEEVE</b>	STANDARD HEAT SLEEVE	0	0
S	P010065	<b>VEHICLE GOVERNED SPEED LIMIT</b>	SPEED LIMIT 65MPH	0	0

**TRANSMISSION**

S	2580003	VOCATION	RDS REFUSE - VOC 400-XXX	0	0
O	2690019	CONTROL MODULE (ELECT)	REFUSE W/ AUTO-NEUTRAL & SERVICE BRAKE, VP170	0	0
S	26A0001	TRANSMISSION SHIFT SCHEDULE / FUEL SENSE	PRIMARY PERFORMANCE / SECONDARY ECONOMY	0	0
S	PT10001	TRANS DIRECTION CHANGE SHIFT INHIBIT	SHIFT INHIBIT ENABLED	0	0
S	27P0000	TRANSMISSION RETARDER AUDIBLE ALARM	NO TRANSMISSION RETARDER AUDIBLE ALARM	0	0
O	2700028	TRANSMISSION	ALLISON 4500 SERIES,6-SPEED	384	59
S	287A200	TRANSMISSION BREATHER	TRANSMISSION REMOTE BREATHER	0	0
S	284016	TRANSMISSION CONTROLS	ALLISON PUSHBUTTON CONTROLS	0	0
S	286005	COOLER-TRANSMISSION OIL	OIL TO WATER TYPE	0	0
S	290003	TRANSMISSION OIL FILL/CHECK	OIL FILL TUBE / DIPSTICK W/ LEVEL SENSOR	0	0
O	300013	DRIVESHAFT-MAIN	SPICER 1810HD HALF ROUND	5	10
O	3170007	PTO-TRANSMISSION MOUNTED	CHELSEA 890 / 897 PTO CLEARANCE (PREP ONLY)	5	0

**FRONT AXLE**

S	3700002	FRONT AXLE	MERITOR MFS-20 STEER AXLE, 20000# CAPACITY	0	0
S	3690005	FRONT AXLE POSITION	52.5 INCHES	0	0
O	3710003	FRONT SUSPENSION	10200 LB TAPER LEAF REDUCED RIDE HEIGHT, 22000 LB GROUND CAPACITY	-90	5
O	371T01	SUSPENSION, FRONT AUX	AUX LOAD CUSHION	10	0
S	373002	SHOCK ABSORBERS-FRONT	DOUBLE ACTING SINGLE - HEAVY DUTY	0	0
S	904011	HUBS-FRONT	STEEL HUB PILOTED,285MM BOLT CIRCLE	0	0
S	9400001	WHEEL OIL SEALS-FRONT	SCOTSEAL PLUS XL	0	0
S	9210001	HUB CAPS - FRONT AXLE	CR ZYTEL HUBCAP	0	0
S	374002	FRONT AXLE LUBRICANT	SYNTHETIC,DANA SPICER EP75W90,OR EQUIV	0	0
O	7510001	BRAKES-FOUNDATION, FRONT AXLE	MERITOR 16.5X7" QP REFUSE BRAKE	29	0
S	754009	BRAKE SLACK ADJUSTERS -FRONT AXLE	MERITOR AUTOMATIC	0	0
S	755001	DUST SHIELDS - FRT BRAKES	DUST SHIELDS - FRONT BRAKES	0	0
S	901001	BRAKE DRUM-FRONT	CAST IRON	0	0



O	383107	<b>STEERING GEAR</b>	INTEGRAL POWER STEERING W/LEFT HAND RAM	0	0
S	387003	<b>POWER STEERING RESERVOIR</b>	FOUR QUART REMOTE MOUNTED	0	0

**REAR AXLE**

O	330444	<b>REAR DRIVE AXLE-SINGLE &amp; TANDEM</b>	MERITOR RT46-160 46,000 LB	0	430
S	330U98	<b>REAR AXLE LUBE PUMP</b>	NO LUBRICATION PUMP	0	0
O	331538	<b>REAR DRIVE AXLE RATIO</b>	5.38	0	0
O	333014	<b>REAR DRIVE AXLE ANTI- SPIN DEVICES</b>	FOUR WHEEL LOCK	0	63
O	3502011	<b>REAR SUSPENSION</b>	HENDRICKSON HMX-EX-460 SUSPENSION @ 54" AS	0	0
S	351013	<b>REAR SUSPENSION BEAMS</b>	54 INCH STEEL RUBBER BUSHED	0	0
S	358005	<b>TORQUE RODS</b>	LONGITUDINAL & TRANSVERSE - RUBBER BUSHED	0	0
S	9130001	<b>HUBS-REAR</b>	IRON HUB, HP 10 STUD	0	0
S	3400001	<b>REAR AXLE BREATHER</b>	STANDARD AXLE BREATHER	0	0
S	9410001	<b>WHEEL OIL SEALS-REAR</b>	SCOTSEAL PLUS XL	0	0
O	7610001	<b>BRAKES-FOUNDATION, REAR AXLE</b>	MERITOR 16.5X8.62" QP REFUSE BRAKE	0	42
S	764013	<b>BRAKE SLACK ADJUSTERS -REAR AXLE</b>	MERITOR AUTOMATIC,TANDEM AXLE	0	0
S	765001	<b>DUST SHIELDS - REAR BRAKES</b>	DUST SHIELDS - REAR BRAKES	0	0
S	781012	<b>BRAKE CHAMBERS- PARKING, TYPE/VENDOR</b>	CAM TYPE MGM STOPGARD (4)	0	0
S	910001	<b>BRAKE DRUM-REAR</b>	CAST IRON	0	0

**BRAKES**

S	729002	<b>AIR LINES-PARKING BRAKE, CHASSIS</b>	AIR LINES CHASSIS PARK BRAKE	0	0
I	7412006	<b>BRAKE CONTROL SYSTEM</b>	WABCO ABS 6S6M W/PLC AND ATC MOUNTED IN CAB	0	0

**CHASSIS**

O	400222	<b>WHEELBASE</b>	222 INCHES	22	26
O	402080	<b>FRAME-REAR OVERHANG</b>	80"	36	-123
S	403012	<b>FRAME RAILS</b>	3/8" VARIABLE DROP STEEL, EXT B	0	0
O	404002	<b>FRAME REINFORCEMENT INNER</b>	.25" LINER, STANDARD LENGTH	132	408
S	406001	<b>FRAME-REAR CUT-OFF</b>	STRAIGHT	0	0
S	4070004	<b>FRAME-FRONT EXTENSION</b>	ACX STANDARD FRONT END	0	0
S	409002	<b>FRAME CROSSMEMBER- CENTER</b>	ALUMINUM ORIENTATION B	0	0

S	4110002	<b>FRAME CROSSMEMBER- END CLOSING</b>	ALUMINUM MEMBER-IF REQUIRED	0	0
O	460002	<b>BUMPER-FRONT</b>	CHROMED STEEL	0	0
O	4682000	<b>GUARD-OIL PAN</b>	ENGINE OIL PAN GUARD - STEEL	0	0
S	480002	<b>TOWING DEVICE-FRONT</b>	TWO REMOVABLE TOW PINS	0	0
S	8742000	<b>WIRING, BODY INTERFACE</b>	RP 170 COMPLIANT	0	0
S	430020	<b>FUEL TANK-LEFT</b>	75 GAL 26" DIA UNPAINTED ALUMINUM	0	0
O	4470002	<b>LH FUEL TANK SPACERS</b>	LH FUEL TANK SPACED 2", DROPPED 0"	7	5
S	432002	<b>FUEL TANK STRAP/ SUPPORT LEFT</b>	PAINTED STEEL, LH	0	0
O	4280003	<b>DRILLING FUEL TK SUPT- LEFT</b>	FUEL TANK LHS LOCATION - SPEC DRIVEN	0	0
S	436015	<b>FUEL LINES</b>	SAE J1402A1 WIRE BRAIDED	0	0
I	8120007	<b>BATTERY BOX</b>	STEEL BOX W/ ALUM LID, 3 BATTERY, LHS	0	0
O	8160002	<b>BATTERY BOX SPACERS</b>	BATTERY BOX SPACED 2", DROPPED 0"	5	1
O	8090003	<b>BATTERY BOX DRILLING</b>	BATTERY BOX LOCATION - SPEC DRIVEN	0	0
S	810089	<b>BATTERY</b>	3 JOHNSON CONTROL 31ECL 12V 2250CCA	0	0
O	8140003	<b>BATTERY SHUT-OFF SWITCH</b>	SHUTOFF W/ LOCKOUT & EMERGENCY JUMPER STUDS	5	2
S	7110001	<b>AIR TANK-BRAKE</b>	STEEL AIR TANKS	0	0
O	7090003	<b>AIR TANK DRILLING</b>	AIR TANKS LOCATION SPEC DRIVEN	0	0
O	7380001	<b>EMERGENCY AIR SYSTEM CHARGING</b>	SCHRADER VALVE, WET TANK MTD	1	0
O	7152001	<b>WET TANK DRAIN</b>	WABCO DV-2 AUTOMATIC W/ HEATER	0	0
O	715T003	<b>AIR RESERVOIR DRAIN SYSTEM</b>	CENTRAL MANIFOLD W/ PETCOCKS	2	2
O	7130007	<b>AIR DRYER</b>	BENDIX AD-IP EP W/HEAT	15	0
O	7100008	<b>AIR DRYER DRILLING</b>	AIR DRYER MTD OUTSIDE RAIL, RHS, SPEC DRIVEN	0	0
S	724001	<b>AIR LINES-CAB</b>	SAE J844 NYLON TUBING	0	0
<b>CAB EXTERIOR</b>					
S	4510001	<b>STEP-CAB ACCESS, CAB MOUNTED</b>	DUAL SELF CLEANING CAB ENTRANCE STEPS	0	0
S	502001	<b>CAB DOORS</b>	STEEL	0	0
O	5120001	<b>POWER WINDOWS</b>	DUAL INTERNAL REGULATOR POWER WINDOWS	4	0
O	620001	<b>SUN VISOR-EXTERIOR</b>	FIBERGLASS, MOUNTED OVER WINDSHIELD	14	-4

<b>O</b>	6220019	<b>MIRRORS-DUAL WEST COAST</b>	MIRROR, CHROME, HTD, REMOTE, W / LWR HTD CONVEX	0	0
<b>S</b>	630026	<b>HORN-AIR</b>	TWIN MOUNTED UNDER CAB	0	0
<b>S</b>	631001	<b>HORN-ELECTRIC</b>	SINGLE	0	0
<b>O</b>	661002	<b>CAB TILT MECHANISM-C.O.E.</b>	HYDRAULIC TILT WITH AIR ASSIST	20	0
<b>S</b>	6720001	<b>GRILLE</b>	AUTOCAR GRILLE	0	0
<b>S</b>	675001	<b>BUG SCREENS</b>	BUG SCREEN MOUNTED BEHIND GRILLE	0	0
<b>O</b>	693002	<b>UNDERCOAT</b>	CAB CORROSION INHIBITOR	0	0

**CAB INTERIOR**

<b>S</b>	3800001	<b>STEERING WHEEL</b>	16" DIA. WHEEL, 2 SPOKE	0	0
<b>S</b>	3810002	<b>STEERING COLUMN</b>	TILT AND TELESCOPIC STEERING COLUMN	0	0
<b>O</b>	5200003	<b>SEAT-DRIVER</b>	BOSTROM T905 MID-BACK, AIR RIDE	2	0
<b>O</b>	5210003	<b>SEAT-PASSENGER</b>	BOSTROM T905 MID-BACK, AIR RIDE	31	0
<b>O</b>	5222001	<b>SEAT BELTS-DRIVER</b>	THREE POINT RETRACTABLE, BRIGHT ORANGE COLOR, W/O COMFORT LATCH	0	0
<b>O</b>	5232001	<b>SEAT BELTS-PASSENGER</b>	THREE POINT RETRACTABLE, BRIGHT ORANGE COLOR, W/O COMFORT LATCH	0	0
<b>S</b>	526014	<b>SEAT INSERT</b>	BLACK CORDURA	0	0
<b>O</b>	5380001	<b>CARPET &amp; MAT</b>	DIAMOND PLATE FLOORING - BOTH SIDES	8	4
<b>S</b>	5500001	<b>CENTER CONSOLE</b>	CENTER CONSOLE	0	0
<b>O</b>	5510002	<b>REAR CONSOLE</b>	REAR CONSOLE W/ WIRE FRAME STORAGE CONTAINER	2	0
<b>S</b>	547001	<b>INSULATION-CAB THERMAL</b>	THERMAL INSULATION KIT FOR CAB	0	0
<b>S</b>	5942001	<b>CIGAR LIGHTER</b>	ONE (1) POWER PORT AND ONE (1) USB POWER PORT	0	0
<b>O</b>	5952000	<b>CAMERAS</b>	3RD EYE CAMERA PREP (CAB AND CHASSIS)	0	0
<b>O</b>	5852001	<b>DRIVER MONITORING SYSTEM</b>	3RD EYE DRIVER CAM W/REMOTE MTD DVR	0	0

**CAB CLIMATE CONTROL**

<b>S</b>	0602001	<b>CAB TEMPERATURE SYSTEM</b>	AIR COND INTEGRAL WITH HEATER/DEFROSTER (GHG)	0	0
<b>S</b>	612001	<b>AIR CONDITIONER CONDENSER</b>	STANDARD (RADIATOR MOUNTED)	0	0

**GAUGES & INSTRUMENTATION**

S	0572001	<b>INSTRUMENTS SALES PKG</b>	ADVANCED DIAGNOSTIC DISPLAY - V1	0	0
S	1430001	<b>TRUCK ELECTRICAL CONTROL MODULE</b>	VEHICLE CONTROL UNIT	0	0
S	1362000	<b>TACHOMETER/RPM TACHOGRAPH</b>	ELECTRONIC TACHOMETER	0	0
S	1372000	<b>GAUGE-HOURMETER</b>	HOURMETER INCLUDED IN ON BOARD DISPLAY	0	0
S	225009	<b>AIR INTAKE RESTRICTION INDICATOR</b>	GRADUATED, AIR CLEANER MOUNTED	0	0
O	3190001	<b>PTO CONTROLS</b>	PTO ELECTRIC CONTROL SWITCH	1	0
S	4390001	<b>GAUGE-FUEL LEVEL</b>	ELECTRONIC FUEL LEVEL	0	0
S	5712003	<b>GAUGE PANELS</b>	ALL GAUGES IMPERIAL	0	0
S	1472001	<b>VEHICLE MONITORING SYSTEM</b>	AUTOCAR ADVANCED TELEMATICS - FULL INSTALLATION	0	0

**LIGHTING**

S	8360003	<b>LAMPS-HEAD</b>	LED HEADLAMPS	0	0
S	8410002	<b>LAMPS-TURN SIGNAL - FRONT</b>	LED FRONT TURN SIGNALS	0	0
S	8510002	<b>LAMPS-MARKER</b>	AMBER LED ROOF MARKERS	0	0
S	859001	<b>LAMPS-RUNNING</b>	DAYTIME	0	0
S	8700001	<b>CIRCUIT PROTECTION DEVICE</b>	AUTO CIRCUIT BREAKERS	0	0

**RADIO/MISC**

S	509001	<b>KEY &amp; LOCK SETS- IGN/DOORS</b>	DOOR & IGNITION SAME - UNIQUE PER TRUCK	0	0
O	509Q2002	<b>KEY QTY.</b>	2 ADDITIONAL KEYS PER TRUCK (4 TOTAL)	0	0
O	5902002	<b>RADIO</b>	AM/FM/USB/MP3/WB/BT	0	0
O	59A0002	<b>RADIO MOUNTING LOCATION</b>	RADIO MOUNTED IN RHS HEADLINER	0	0
O	5910002	<b>ANTENNA/POWER SUPPLY</b>	ANTENNA - ROOF MOUNTED	0	0
O	596005	<b>RADIO SPEAKERS</b>	2 DUAL CONE SPEAKERS	0	0
O	9620001	<b>FIRE EXTINGUISHER</b>	DUAL 5LB ABC EXTINGUISHERS, ONE UNDER EACH SEAT	5	0

**FRONT TIRES / WHEELS**

O	9310046	<b>TIRE MANUFACTURER &amp; TREAD - FRONT</b>	MICHELIN XZU-S 2	0	0
S	930469	<b>TIRE SIZE &amp; LOAD RANGE - FRONT</b>	315/80R22.5L	0	0
S	9050015	<b>WHEELS-DISC FRONT</b>	22.5X9.0" STEEL, 5.25" INSET, HAYES	0	0

**REAR TIRES / WHEELS**

<b>O</b>	9342006	<b>TIRE MANUFACTURER &amp; TREAD - REAR</b>	MICHELIN X WORKS Z (REPLACED BY XWZ2 AUG 2025 11R22.5 AND DEC 2024 11R24.5	0	0
<b>S</b>	933062	<b>TIRE SIZE &amp; LOAD RANGE - REAR</b>	11R22.5H	0	0
<b>S</b>	9140014	<b>WHEELS-DISC REAR</b>	22.5X8.25" STEEL, 6.2" INSET, HAYES	0	0

**PAINT**

<b>S</b>	950001	<b>CAB PAINT SCHEME</b>	SINGLE COLOR PAINT	0	0
<b>O</b>	9550002	<b>CAB PAINT TYPE</b>	CAB FIRST COLOR OTHER THAN STD, NON METALLIC	0	0
<b>A</b>	9801000	<b>CAB COLOR-FIRST</b>	Approved --- DPSS-N1193EX --- Gray	0	0
<b>S</b>	9861U1	<b>CHASSIS COLOR</b>	BLACK P3036	0	0
<b>S</b>	987949	<b>BUMPER COLOR</b>	SAME AS CHASSIS,UNPAINTED ALUM OR CHROME	0	0
<b>S</b>	988401	<b>DISC WHEEL OR RIM COLOR</b>	STEEL, E-COAT WHITE / ALUM-UNPAINTED	0	0

**ADDITIONAL OPTIONS**

<b>S</b>	899002	<b>CHASSIS WARRANTY</b>	STANDARD WARRANTY	0	0
<b>O</b>	899A203	<b>TRANSMISSION WARRANTY</b>	ALLISON 5YR. EXT WARRANTY	0	0
<b>O</b>	899B410	<b>ENGINE WARRANTY</b>	2024 X12_EPA_PT1_5 Years / 300,000 Miles_PP1_Matrix: 237426	0	0
<b>O</b>	899K327	<b>EXHAUST AFTERTREATMENT EXTENDED WARRANTIES</b>	2024 X12_EPA_AT3_5 Years / 300,000 Miles_Matrix: 238815	0	0
<b>S</b>	978015	<b>FLOOR PLAN</b>	15 DAYS FLOORING	0	0

**OTHERS**

<b>S</b>	9722024	<b>CERTIFICATION-EMISSIONS</b>	MY2024 ENGINE	0	0
----------	---------	--------------------------------	---------------	---	---

**SUB TOTALS**

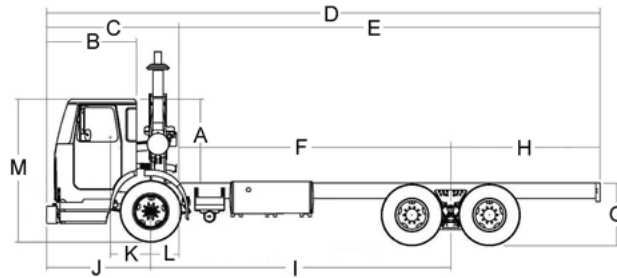
BASE WEIGHT	10,431	6,154
FACTORY OPTION WEIGHT	670	903
DISTRIBUTOR OPTION WEIGHT	0	0

**TOTALS**

TOTAL WEIGHT (LB)	11,101	7,057	18,158
-------------------	--------	-------	--------

07/26/2024

# Dimensions



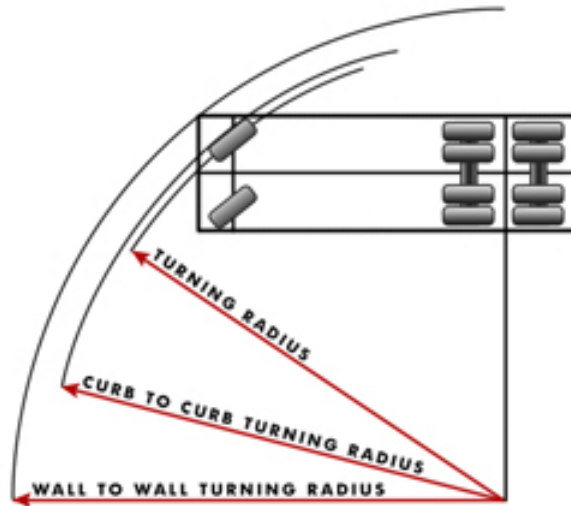
	Dimension(in)	Description
A	59.00	CAB HEIGHT
B	62.00	BUMPER TO BACK OF CAB
C	95.00	EFFECTIVE BUMPER TO BACK OF CAB
D	373.00	OVERALL LENGTH
E	278.00	EFFECTIVE CAB TO END OF FRAME
F	198.00	EFFECTIVE CAB TO REAR AXLE
G	41.15	UNLADEN FRAME HEIGHT
H	80.00	OVERHANG
I	222.00	WHEELBASE
J	71.00	BUMPER TO FRONT AXLE
K	-24.00	DRIVER CENTER OF GRAVITY
L	24.00	EFFECTIVE FRONT AXLE TO BACK
M	100.15	OVERALL HEIGHT
N	0.00	FRONT FRAME EXTENSION

## SPECIFICATION SUMMARY

Model	ACX64 Class 8
Engine	X12, 350HP / 2000RPM / 1350 LB-FT, CUMMINS
Transmission	ALLISON 4500 SERIES,6-SPEED
Rear Axle	MERITOR RT46-160 46,000 LB
Rear Axle Ratio	5.38
Rear Tire	11R22.5H

07/26/2024

# Turning Radius



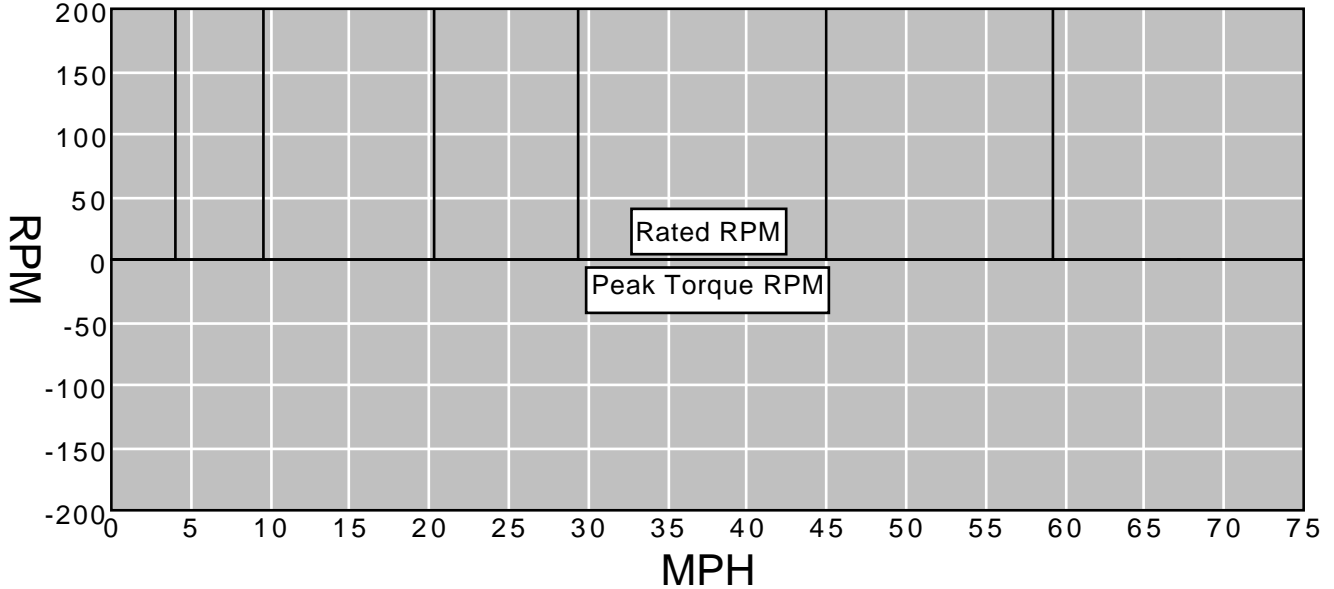
	Dimension(ft)	Description
A	37.39	TURNING RADIUS
B	76.86	CURB TO CURB TURNING DIAMETER
C	83.04	WALL TO WALL TURNING DIAMETER

## SPECIFICATION SUMMARY

Model	
Engine	X12, 350HP / 2000RPM / 1350 LB-FT, CUMMINS
Transmission	ALLISON 4500 SERIES,6-SPEED
Rear Axle	MERITOR RT46-160 46,000 LB
Rear Axle Ratio	5.38
Rear Tire	11R22.5H

07/26/2024

# Shift Chart



Gear	Trans. Ration	Rear Axle Ration	Overall Reduction	% Split	MPH	RPM After Shift
1C	11.37	5.38	61.2	0.0	4.0	0
1	4.70	5.38	25.3	141.9	9.6	826
2	2.21	5.38	11.9	112.7	20.3	940
3	1.53	5.38	8.2	44.4	29.4	1,384
4	1.00	5.38	5.4	53.0	45.0	1,307
5	0.76	5.38	4.1	31.6	59.2	1,520
6	0.67	5.38	3.6	13.4	67.1	1,763

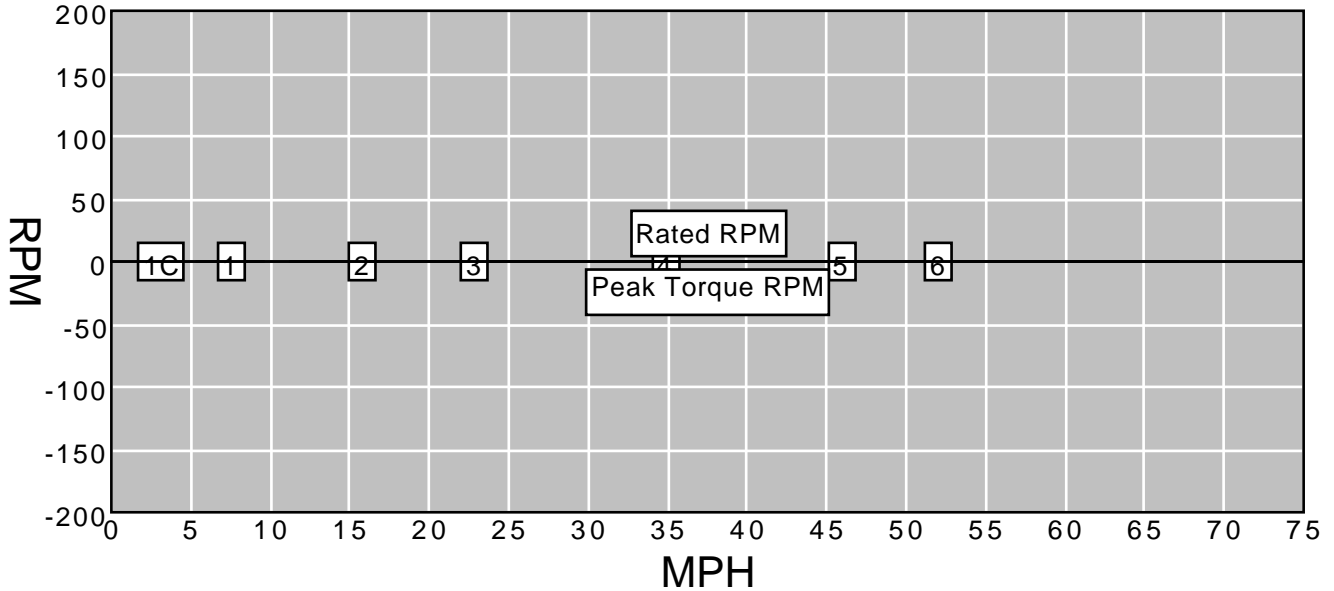
## SPECIFICATION SUMMARY

Model	ACX64 Class 8
Engine	X12, 350HP / 2000RPM / 1350 LB-FT, CUMMINS
Rated Power	0 HP @ 0 RPM
Peak Torque	0 LB-FT @ 0
Transmission	ALLISON 4500 SERIES,6-SPEED
Rear Axle	MERITOR RT46-160 46,000 LB
Rear Axle Ratio	5.38
Rear Tire	11R22.5H
Tire Revolution	496



07/26/2024

# Operating Range



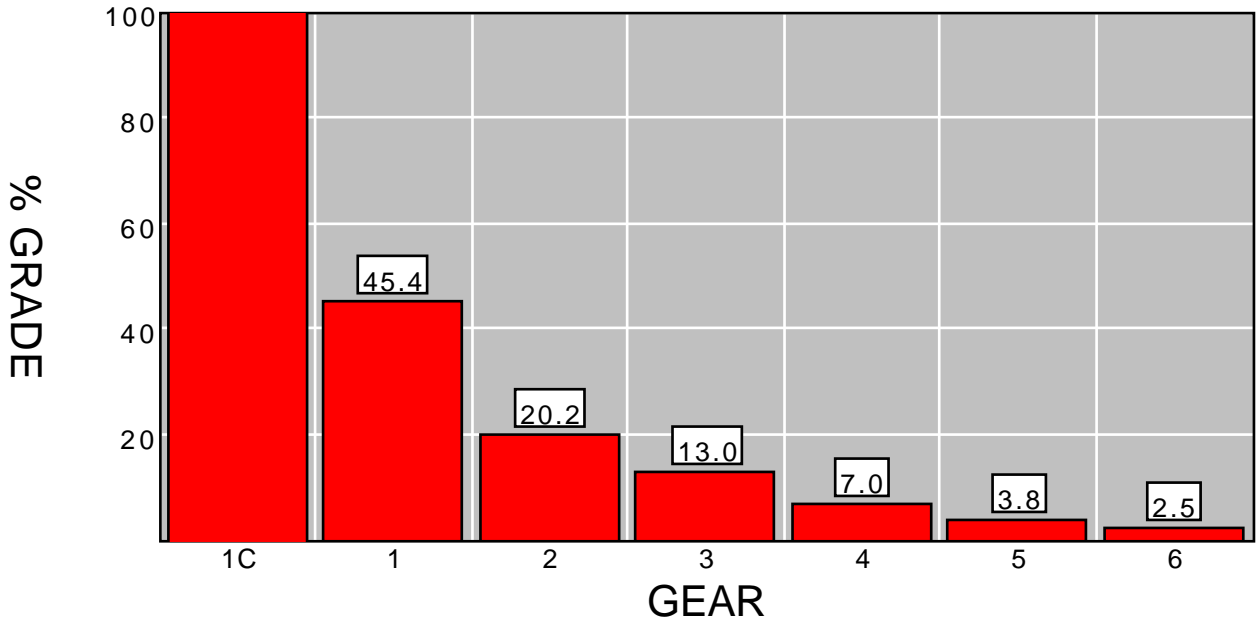
Gear	Trans. Ratio	Rear Axle Ratio	Minimum MPH	Maximum MPH
1C	11.37	5.38	2.2	4.0
1	4.70	5.38	5.3	9.6
2	2.21	5.38	11.2	20.3
3	1.53	5.38	16.2	29.4
4	1.00	5.38	24.7	45.0
5	0.76	5.38	32.5	59.2
6	0.67	5.38	36.9	67.1

## SPECIFICATION SUMMARY

Model	ACX64 Class 8
Engine	X12, 350HP / 2000RPM / 1350 LB-FT, CUMMINS
Rated Power	0 HP @ 0 RPM
Peak Torque	0 LB-FT @ 0
Transmission	ALLISON 4500 SERIES,6-SPEED
Rear Axle	MERITOR RT46-160 46,000 LB
Rear Axle Ratio	5.38
Rear Tire	11R22.5H
Tire Revolution	496

# Gradeability

07/26/2024



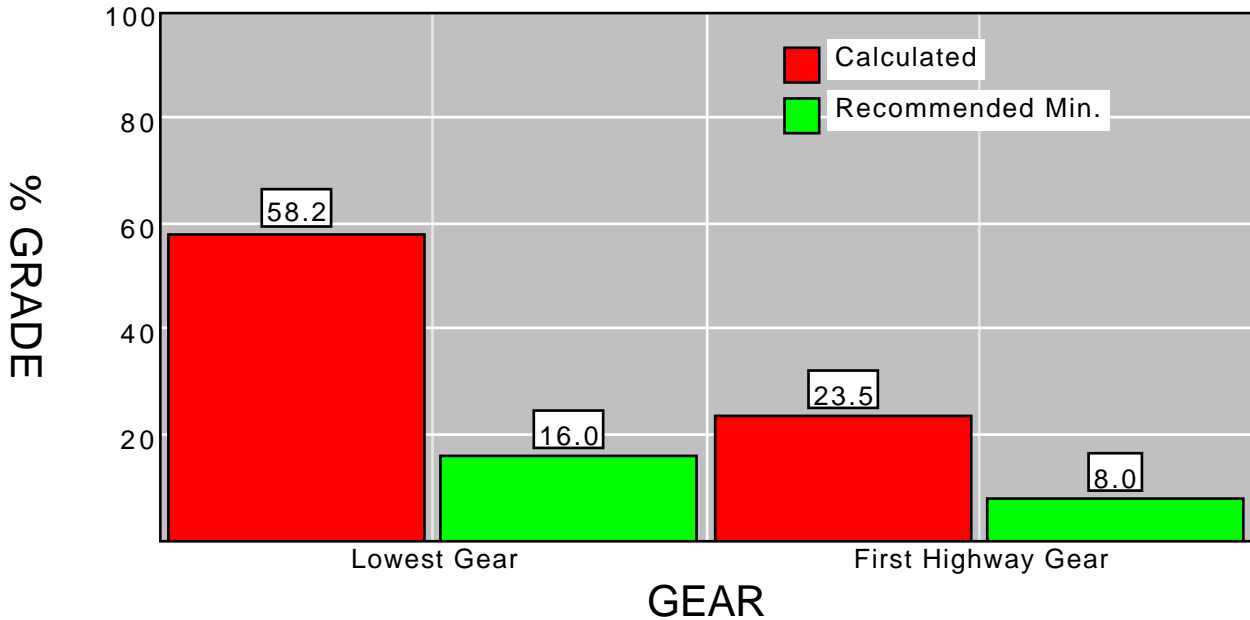
Gear	Trans. Ratio	Rear Axle Ratio	Overall Reduction	Peak Torque	Wheel HP	MPH	Maximum Grade%
1C	11.37	5.38	61.2	1,350.0	279.6	2.2	111.5
1	4.70	5.38	25.3	1,350.0	279.6	5.3	45.4
2	2.21	5.38	11.9	1,350.0	279.6	11.2	20.2
3	1.53	5.38	8.2	1,350.0	279.6	16.2	13.0
4	1.00	5.38	5.4	1,350.0	279.6	24.7	7.0
5	0.76	5.38	4.1	1,350.0	279.6	32.5	3.8
6	0.67	5.38	3.6	1,350.0	279.6	36.9	2.5

## SPECIFICATION SUMMARY

Model	ACX64 Class 8
Engine	X12, 350HP / 2000RPM / 1350 LB-FT, CUMMINS
Peak Torque	0 LB-FT @ 0
Transmission	ALLISON 4500 SERIES,6-SPEED
Rear Axle	MERITOR RT46-160 46,000 LB
Rear Axle Ratio	5.38
Rear Tire	11R22.5H
Tire Revolution	496
GVW/GCV	0
Surface	Concrete

# Startability

07/26/2024



Gear	Application	Recommended Minimum Grade %	Calculated Grade %
Lowest Gear	City	12.0	n/a
	On Highway	16.0	58.2
	On-Off Highway	18.0	n/a
	Off Highway	20.0	n/a
			0.0
First Highway Gear	All Applications	8.0	23.5

## "SPECIFICATION SUMMARY"

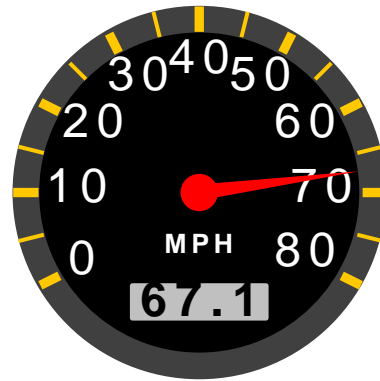
Model	ACX64 Class 8
Engine	X12, 350HP / 2000RPM / 1350 LB-FT, CUMMINS
Clutch Torque	0 LB-FT 0 RPM
Transmission	ALLISON 4500 SERIES,6-SPEED
Rear Axle	MERITOR RT46-160 46,000 LB
Rear Axle Ratio	5.38
Rear Tire	11R22.5H
Tire Radius	19.6
GVW/GCV	0
Surface	Concrete
Terrain	On Highway

07/26/2024

# Top Speed

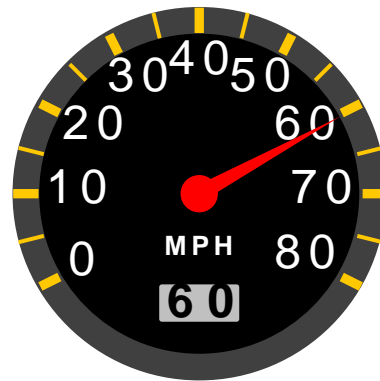
## Speed At Maximum RPM

---



## RPM At 60MPH

---



	MPH	RPM
Top Speed	67.1	2,000
Cruise Speed	60.0	1,787
Minimum Of Engine Range	20.1	600
Maximum Of Engine Range	67.1	2,000
Minimum Of Economy Range	20.1	600
Maximum Of Economy Range	67.1	2,000

Prepared By Bobby Smith  
Quote Id : Straight Frame Lab ASL X12  
Phone : 765-808-1259  
Order : 20055152  
Lead Unit Sales Order : 20055152  
Model : 2025 - ACX64 Class 8

Prepared For Scott Bowling  
City of Ann Arbor

VIN : 20055152 - 5VCACREF9RC250543

### SPECIFICATION SUMMARY

---

Model	ACX64 Class 8
Engine	X12, 350HP / 2000RPM / 1350 LB-FT, CUMMINS
Transmission	ALLISON 4500 SERIES,6-SPEED
Rear Axle	MERITOR RT46-160 46,000 LB
Rear Axle Ratio	5.38
Rear Tire	11R22.5H
Tire Revolution	496

# ***GAWR, GVWR & Tire Pressure***

07/26/2024

<b>GVW Rating – 66,000#</b>			
<b>Front GAWR</b>	<b>20,000#</b>	<b>Rear GAWR</b>	<b>46,000#</b>
Front Suspension	22,000#	Rear Suspension	46,000#
Front Wheels	20,000#	Rear Wheels	59,100#
Front Tire Size And Tread	20,000#	Rear Tire Size And Tread	48,000#
Front Brakes	20,000#	Rear Brakes	48,000#
Front Axle	20,000#	Rear Axle	46,000#
<b>PSI</b>			
Front PSI	130.0	Rear PSI	105.0