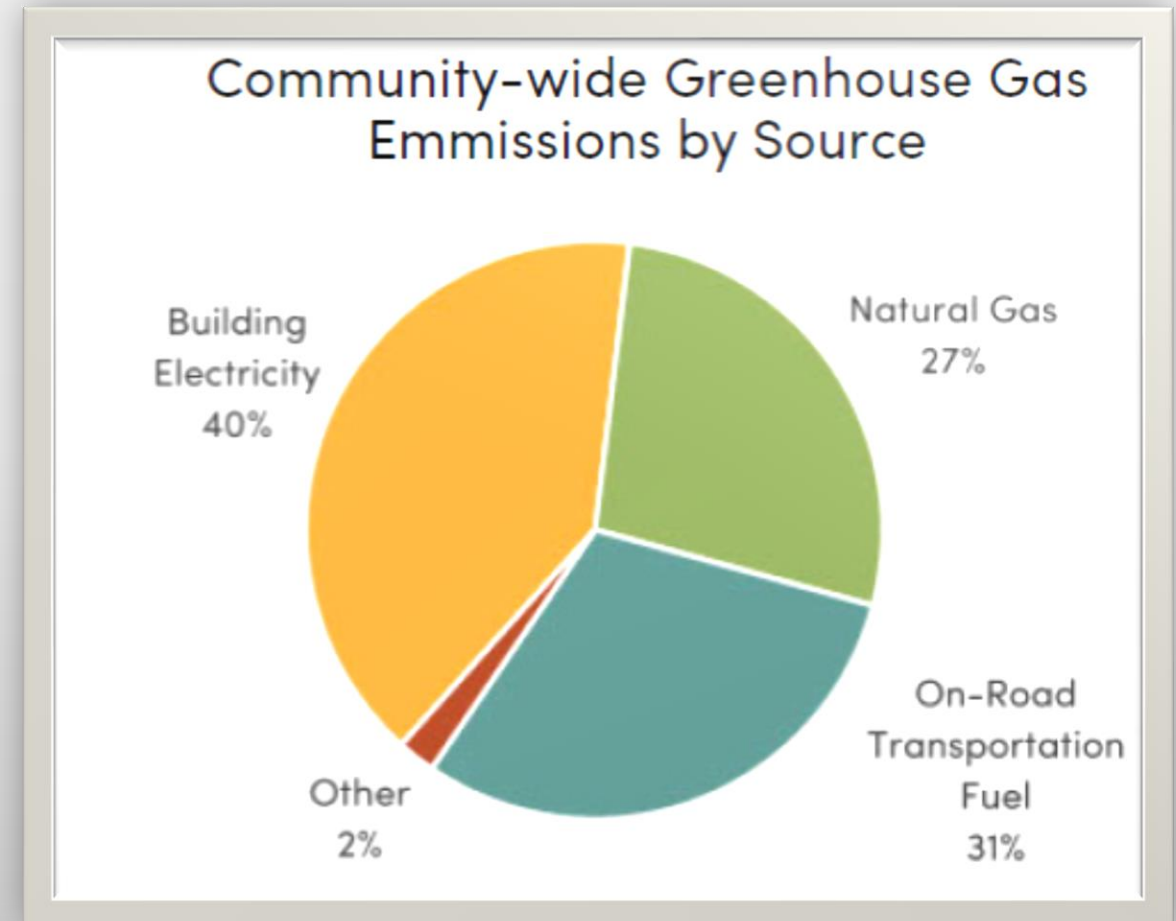


# ANN ARBOR'S SUSTAINABLE ENERGY UTILITY

**100% Clean, Reliable, Locally Built, Community-Owned Power**

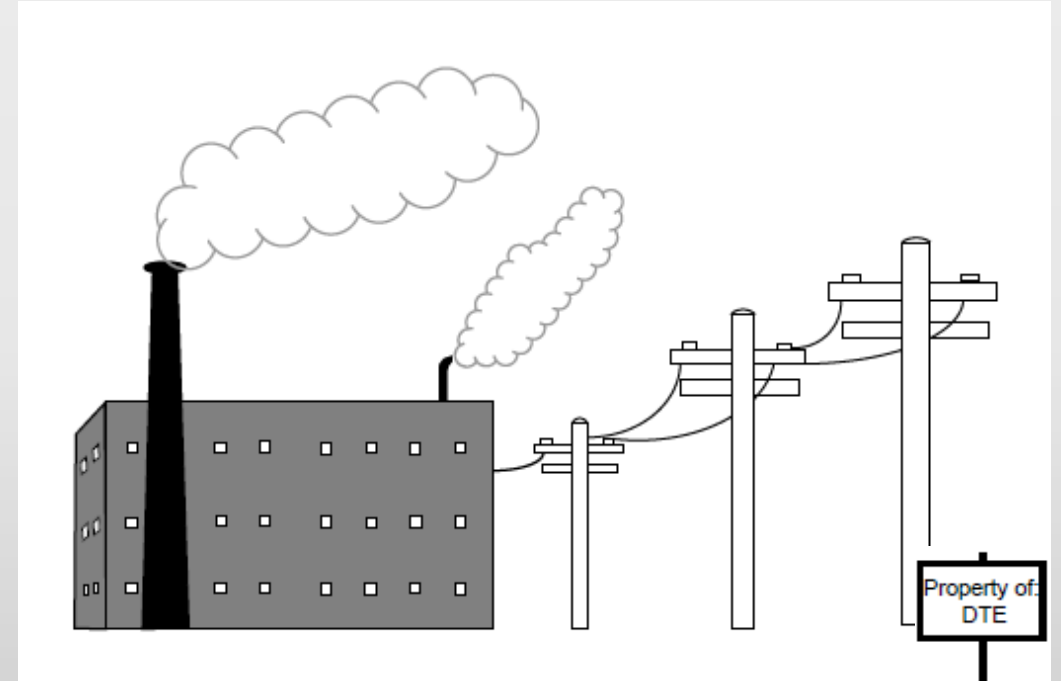
## Emissions by Source

- 40% of community-wide emissions come from building electricity usage
- Vehicles and building electrification is increasing this figure
- Goal of a just transition to community-wide carbon neutrality by 2030 (A<sup>2</sup>ZERO)



## Michigan Energy Context

- Ann Arbor has a pre-Foote Act franchise, meaning our current utility's franchise is considered perpetual.
- Foote Act franchises are not exclusive; MI law gives cities and villages the right to compete, as well as the Constitutional right to take over an existing franchise. That means we could
  - Buy out DTE's infrastructure (traditional municipalization)
  - Create a parallel utility to supplement DTE's service.
  - Continue the relationship we have.



# WHAT IT...

---

- We created:
  - A community owned energy utility that provides electricity from local solar and battery storage systems installed on homes and businesses throughout the City
  - A community-owned utility that provides 100% clean, reliable, locally built, and affordable electricity; built by the community, for the community.
  - A utility that gives residents a choice for where they procure their energy.
  - A parallel utility that did NOT duplicate the traditional grid, with all its vulnerabilities.



## **ANN ARBOR'S SUSTAINABLE ENERGY UTILITY**

A publicly owned, locally powered,  
reliable, clean, fast, and equitable  
power model for our community.

# **A SUSTAINABLE ENERGY UTILITY (SEU)**

# WHAT IS AN SEU?

---

- The Ann Arbor SEU is a community owned energy utility that provides electricity from local solar and battery storage systems installed on homes and businesses throughout the City.
- It invests in energy efficiency and electrification of our homes and businesses
- Prioritizes at-risk and underserved communities
- Focuses on reliability and resilience





# WHAT SERVICES WOULD AN SEU OFFER?

---

- **Solar and energy storage** to improve reliability.
- Robust **energy waste reduction** programs and rebates to that improve indoor comfort, health, and safety, all while saving money.
- **On-bill financing** to help lower the costs and increase payment flexibility.
- **Microgrids** between neighboring households, to share solar and storage.
- Support for **beneficial electrification** to support cleaner and safer homes and businesses.
- **Community solar** programs that allow residents to benefit from solar installed at community sites.

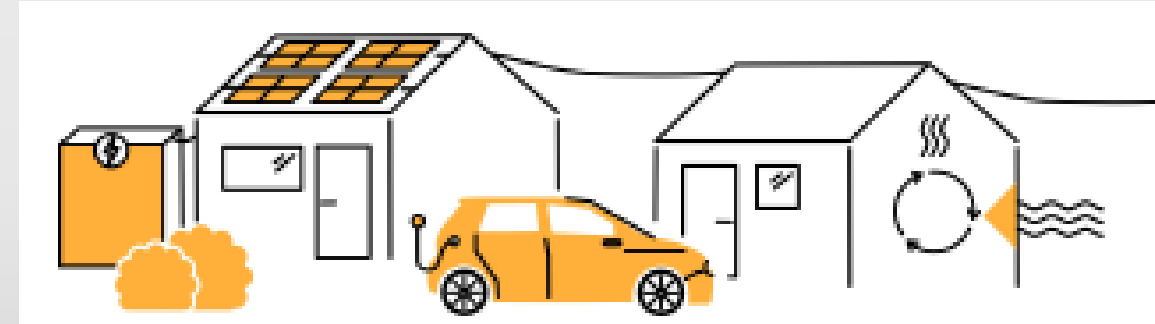


## WHY AN SEU?

---

A SEU focuses on locally generated, community-owned power. It would:

- Invest immediately in local clean energy right here in our community.
- Help more Ann Arborites access the benefits of clean energy and receive energy waste reduction services.
- Focus on increasing the reliability and resilience of our energy system.
- Advance our community's commitment to climate and equity.

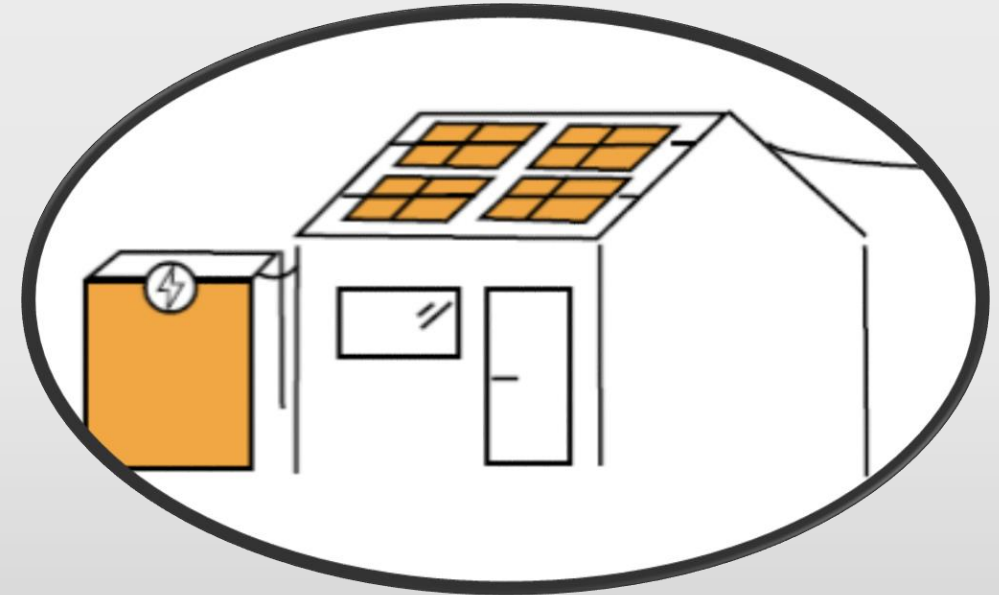




# HOW A SUSTAINABLE ENERGY UTILITY COULD WORK

## Example: SEU-Owned Solar

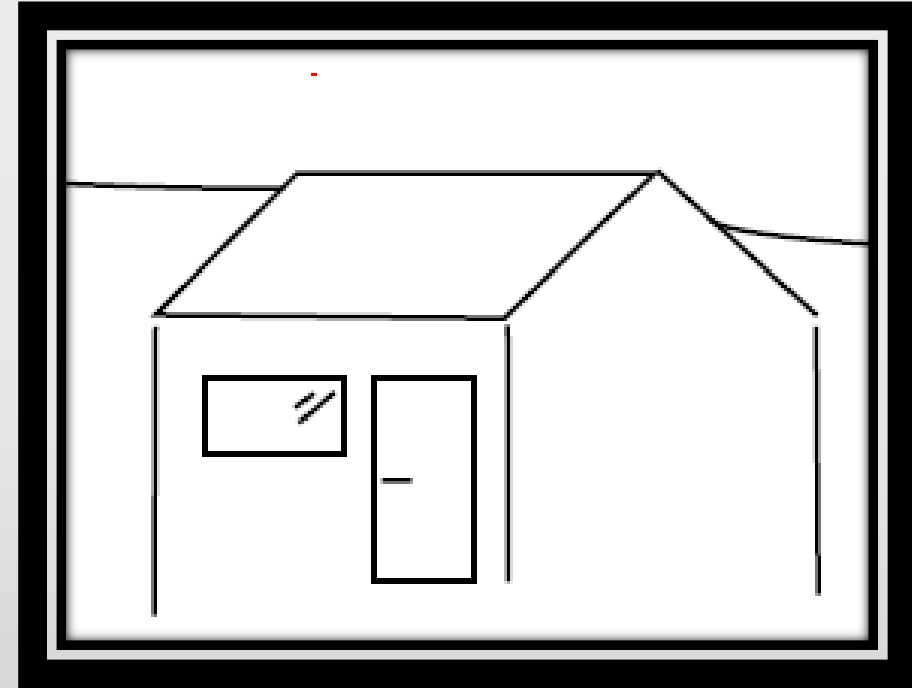
- Enroll in the SEU as a supplemental utility to DTE
- SEU places solar on roof, maximizing the generation potential, and sending the excess to SEU-owned storage (and eventually to neighbors)
- SEU assists in electrification and efficiency improvements. Homeowner has option to finance upgrades with on-bill financing.
- Resident receives two electric bills, one for usage from DTE and one for usage from.



Scenario 1: Homeowner/Business with good solar potential

## Example: SEU without On-Site Solar

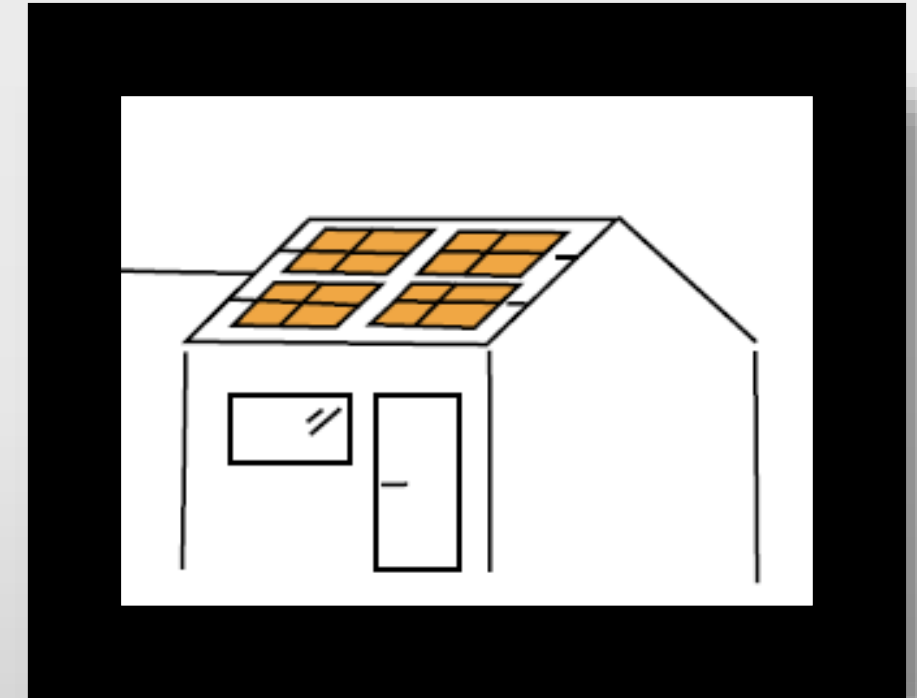
- All the same benefits as Scenario 1; difference is resident is not hosting SEU solar on roof.
- SEU assists in electrification and efficiency improvements. Resident has option to finance upgrades with on-bill financing.
- Once micro and nano grids become available, resident receives power from excess energy generated by neighbors or the SEU's battery system.
- Resident receives two electric bills – for SEU financed improvements and/or SEU drawn solar and from DTE.



Scenario 2: Homeowner/Business  
with poor solar potential

## Example: Customer-Owned Solar

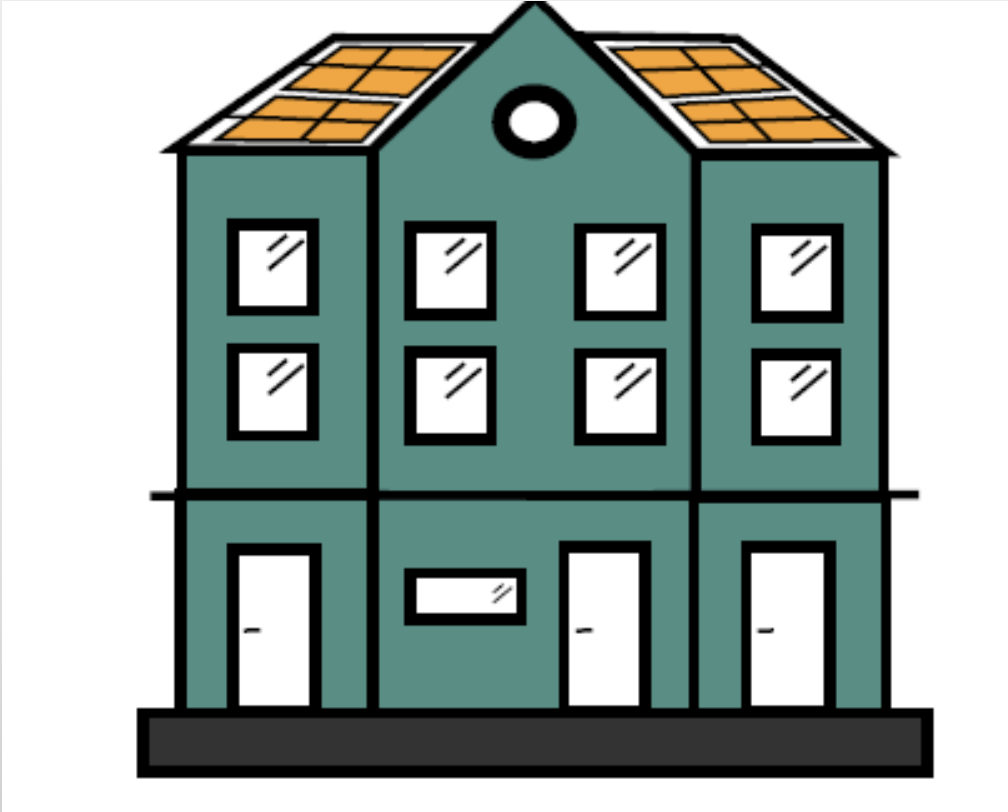
- Resident enrolls in the SEU.
- SEU assists in electrification and efficiency improvements. Resident has option to finance upgrades with on-bill financing.
- Resident uses power from their solar system – any excess is sold to the SEU and distributed through the micro and/or nano grid to neighbors OR put onto the SEU battery system.
- Owner receives two bills.



Scenario 3: Homeowner/Business  
who owns their own solar

## Example: Renters

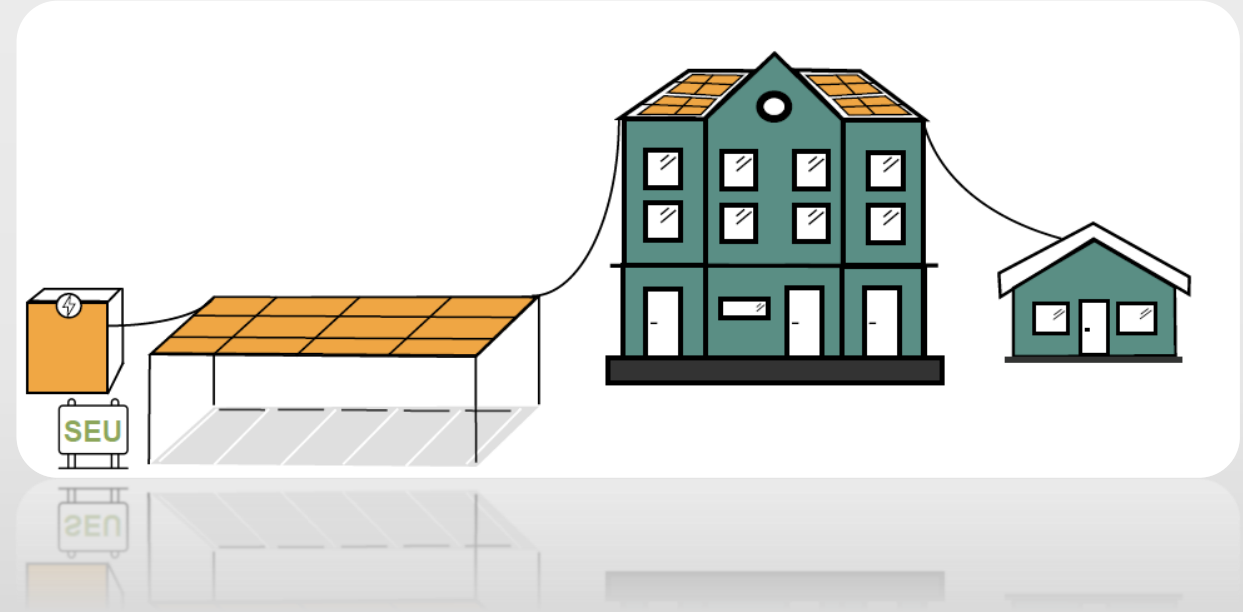
---



- Enrollment and programs are done in coordination with landlord
- Renters are eligible for all applicable SEU programs
- Green rental leases and on-bill financing enable the improvements to stay with the building, the financing to be spread over a longer period of time, and the benefits to be realized by current and future tenants

## Example: Community Solar

- Larger solar installations, such as carports, school rooftops, or ground mounts, host solar for multiple buildings in small community solar microgrids
- Subscribers pay per kWh of usage from SEU.



# NEXT STEPS

- Currently registering public interest in an SEU
- More details available at [www.a2gov.org/a2seu](http://www.a2gov.org/a2seu)
- Share your thoughts at: (ADD URL)



# Ann Arbor's Sustainable Energy Utility

*Clean, reliable, locally built, and affordable electricity: built by the community, for the community*

[www.a2gov.org/a2seu](http://www.a2gov.org/a2seu)