

## Pittsfield Charter Township

6201 West Michigan Avenue, Ann Arbor, MI 48108  
Phone: (734) 822-3135 • Fax: (734) 944-6103  
Website: [www.pittsfield-mi.gov](http://www.pittsfield-mi.gov)

### Office of the Supervisor

**Mandy Grewal**  
Township Supervisor  
[grewalm@pittsfield-mi.gov](mailto:grewalm@pittsfield-mi.gov)

**Trish Reilly**  
Deputy Supervisor  
[reillyt@pittsfield-mi.gov](mailto:reillyt@pittsfield-mi.gov)

August 25, 2014

Dear Resident:

In an effort to continually improve on our past work and ensure that our work reflects the current needs of our community, the Township has engaged Toole Design Group (TDG) to conduct a three-day interactive design workshop to delineate, with greater specificity, the vision for our mixed-use nodes and our form-based design districts. As Pittsfield Township promotes pedestrian-oriented development that furthers a greater sense of community within its existing developed spaces, we want to outline specific expectations that are consistent with the needs of our community.

The interactive workshop is designed to obtain input from all stakeholder groups with regard to how they envision the Ann Arbor-Saline node and the State/Ellsworth node (see attached maps) functioning in the future; the types of amenities, improvements and uses you think would further enhance the existing uses and landscape of the area.

In particular, the Township wants to ensure that the quality of existing developments is further enhanced by these nodes. Given your proximity to one of the two above-noted nodes, we would like to invite you to attend one or more of the following sessions so we can be sure to include your input to define, with greater specificity, the vision for these nodes. All sessions will be held at the Pittsfield Township Administrative Building, 6201 W. Michigan Avenue, Ann Arbor, Michigan 48108.

#### Wednesday, September 17, 2014

- 7:00pm – Introductory presentation and input session

#### Thursday, September 18, 2014

- 1:00 - 4:00pm – Drop-in office hours with TDG to share ideas and ask questions
- 5:00 - 6:30pm – Informal pin-up session to share your ideas

#### Friday, September 19, 2014

- 1:00pm – Presentation of TDG's recommendations and design ideas. A video copy of this presentation will be uploaded to the Township website for general public dissemination.

We hope you will stop by and share your ideas and help us refine the vision for the area and ensure a continued improvement in the quality of life for all in Pittsfield Township.

Best regards,

Mandy Grewal, Ph.D.  
Supervisor

ANN ARBOR  
CITY CLERK  
SEP 02 14  
TIME: \_\_\_\_\_



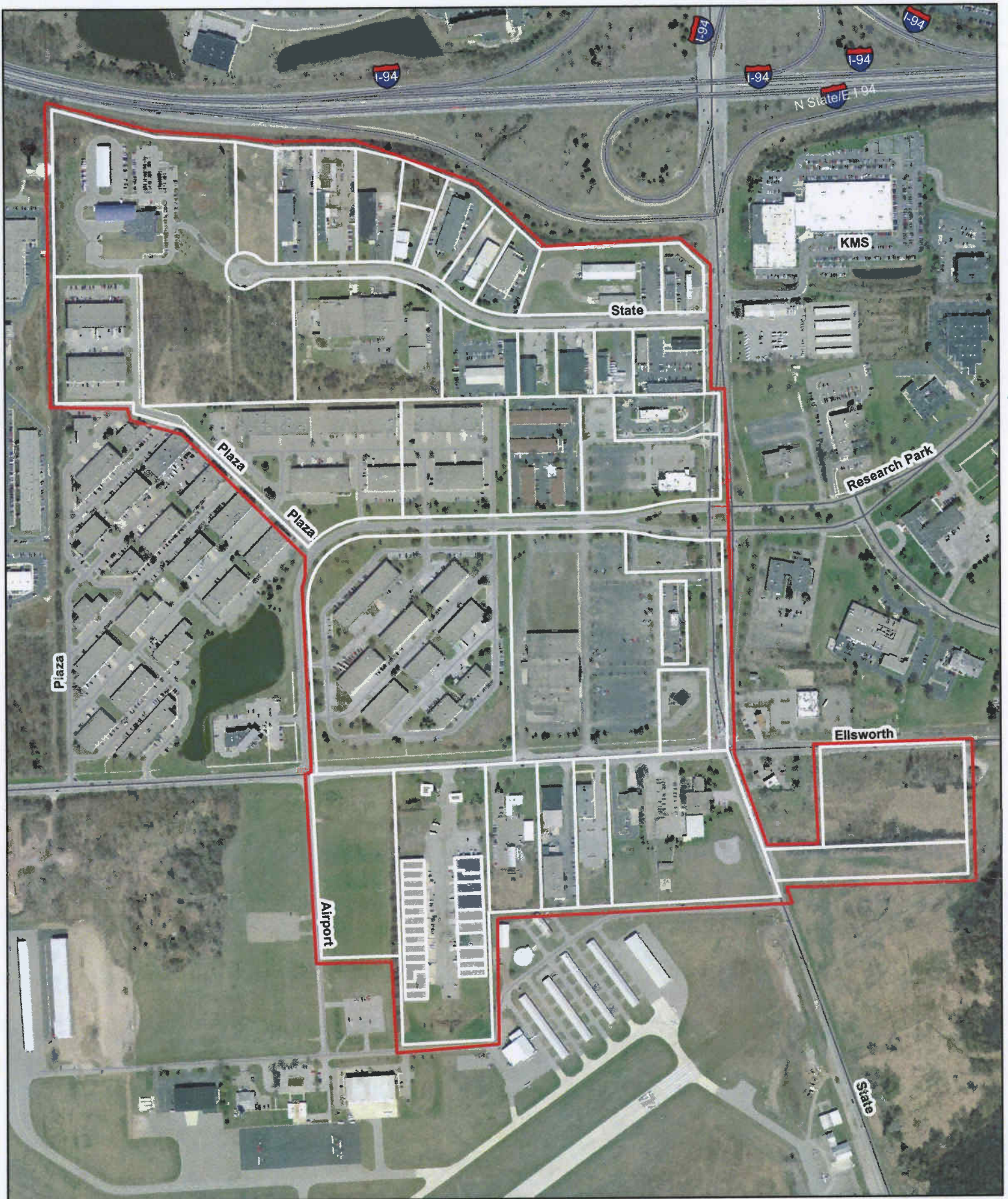


## Ann-Arbor Saline Form-Based Node

0 250 500 1,000 Feet







**State Street / Ellsworth Rd  
Form-Based Node**

