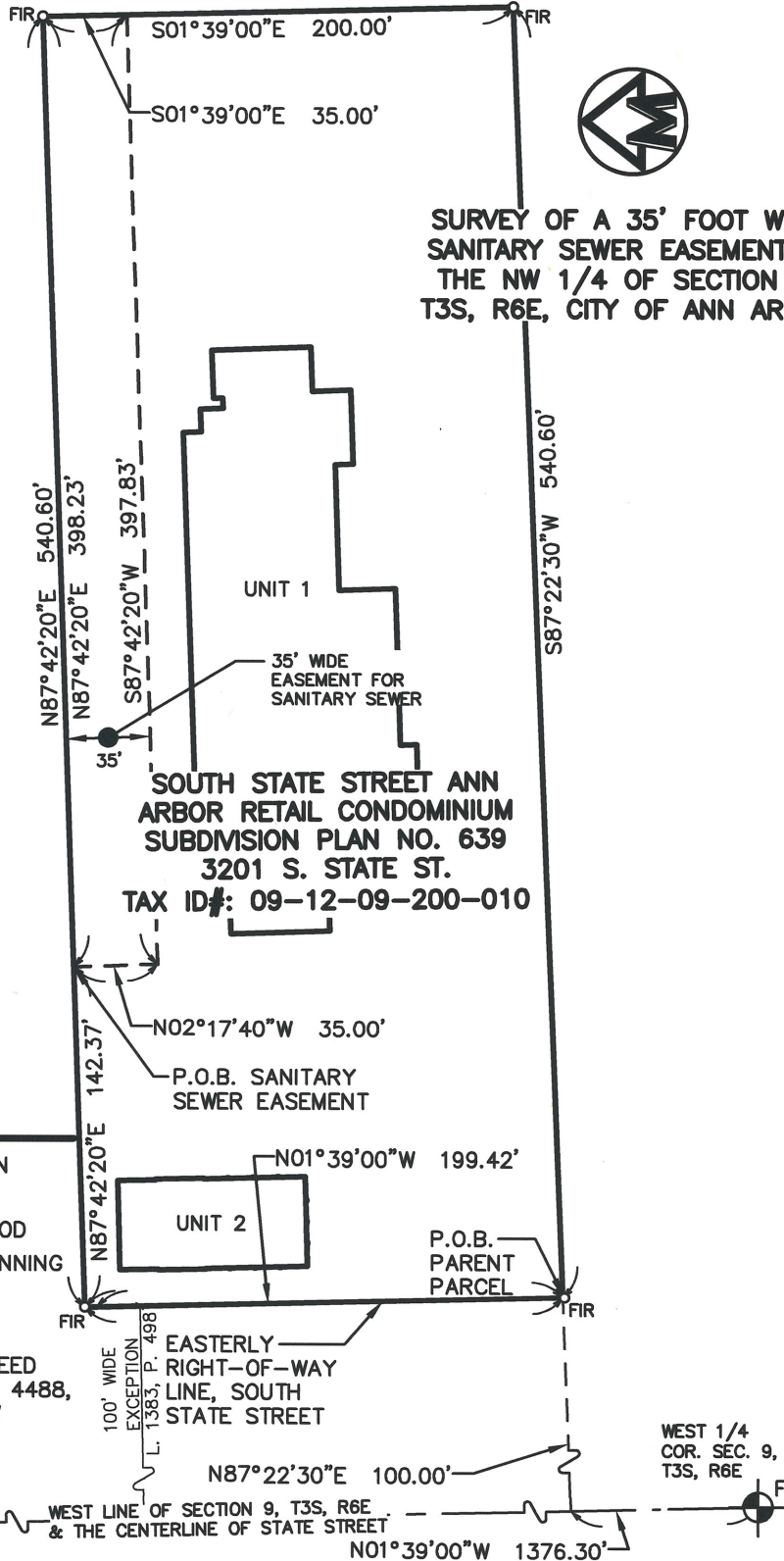


# EXHIBIT A



**SURVEY OF A 35' FOOT WIDE  
SANITARY SEWER EASEMENT IN  
THE NW 1/4 OF SECTION 9,  
T3S, R6E, CITY OF ANN ARBOR**



## LEGEND

- FOUND SECTION CORNER
- FOUND IRON ROD
- POINT OF BEGINNING

BEARINGS BASED ON DEED AS RECORDED IN LIBER 4488, PAGE 527, WASHTENAW COUNTY RECORDS.  
NORTHWEST COR. SEC. 9, T3S, R6E

CLIENT: S. State St. Ann Arbor Retail LLC	DATE: 05-24-16
JOB NO.: <b>15150</b>	SHEET 1 OF 2
SECTION: 9    TWN: 03S    RANGE: 06E	SCALE: 1in. = 60 ft.
CITY OF ANN ARBOR	BOOK: N/A
WASHTENAW COUNTY, MICHIGAN	BY: pk



**MIDWESTERN  
CONSULTING**

3815 Plaza Drive Ann Arbor, Michigan 48108  
(734) 995-0200 • www.midwesternconsulting.com  
Land Development • Land Survey • Institutional • Municipal  
Wireless Communications • Transportation • Landfill Services

