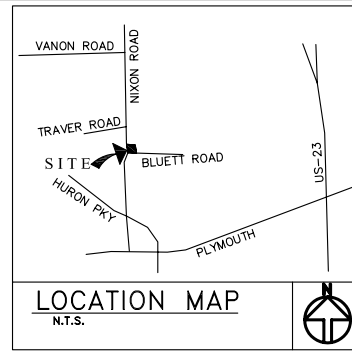
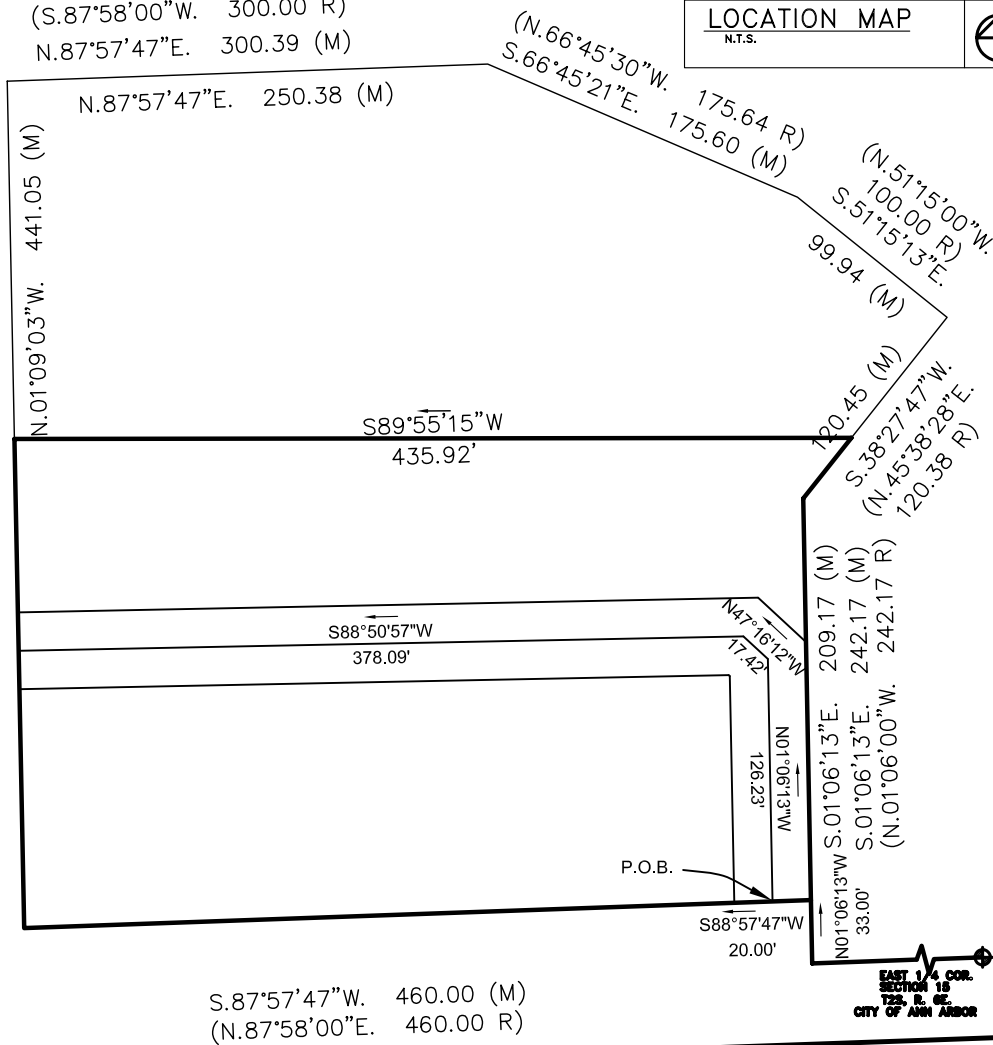


# 40' WIDE WATERMAIN EASEMENT



(S.01°08'00"E. 475.06 R)  
 N.01°09'03"W. 474.05 (M)  
**NIXON RD WIDTH VARIES (PUBLIC)**

(S.87°58'00"W. 300.00 R)  
 N.87°57'47"E. 300.39 (M)



S.87°57'47"W. 460.00 (M)  
 (N.87°58'00"E. 460.00 R)

## LEGAL DESCRIPTION OF CENTER LINE OF 40' WIDE WATER MAIN EASEMENT:

COMMENCING AT THE E 1/4 CORNER, SECTION 15, T2S, R6E, CITY OF ANN ARBOR, WASHTENAW COUNTY, MICHIGAN; THENCE S 87° 57'47" W ' 855.74' ALONG THE E-W 1/4 LINE OF SAID SECTION, SAID E-N 1/4 LINE ALSO BEING THE N. LINE OF BLUETT ROAD (66' WIDE); THENCE N.01° 06' 13" W. 33.00; THENCE S 88° 57' 47" W ' 20.00' TO THE POINT OF BEGINNING OF CENTER LINE OF WATER MAIN EASEMENT; THENCE N 01° 06'13" W 126.23'; THENCE N 47° 16' 12" W 17.42'; THENCE S 88° 50'57" W 378.09' TO THE END OF CENTER LINE OF 40' WATER MAIN EASEMENT.BEING A PART OF THE NE 1/4 OF SECTION 15,T2S,R6E, CITY OF ANN ARBOR, WASHTENAW COUNTY, MICHIGAN.

## LEGAL DESCRIPTION:

A PART OF THE NORTHEAST 1/4 OF SECTION 15, T. 2S., R. 6E., CITY OF ANN ARBOR, WASHTENAW COUNTY, MICHIGAN, MORE PARTICULARLY DESCRIBED AS:

BEGINNING AT A POINT ON THE NORTH LINE OF BLUETT ROAD, 66' WIDE, BEING DISTANT S. 87°57'47" W. 855.74' ALONG THE EAST-WEST 1/4 LINE AND N. 01°06'00" W. 33.00' FROM THE EAST 1/4 CORNER OF SAID SECTION 15; THENCE N. 01°06'00" W. 209.17'; THENCE N. 45°38'28" E. 45.09'; THENCE S. 89°55'15" W. 443.67' TO A POINT ON THE EAST LINE OF NIXON ROAD, (WIDTH VARIES); THENCE ALONG SAID EAST LINE S. 01°09'03" E. 254.68' TO A POINT ON SAID NORTH LINE OF BLUETT ROAD; THENCE ALONG SAID NORTH LINE N. 87°57'47" E. 410.59' TO THE POINT OF BEGINNING. SAID PARCEL CONTAINS 2.35 ACRES, MORE OR LESS, AND IS SUBJECT TO AN EXCLUSIVE AND NON-EXCLUSIVE EASEMENT TO MICHIGAN BELL TELEPHONE COMPANY, AS RECORDED IN LIBER 2494, PAGES 215-218, WASHTENAW COUNTY RECORDS, AND SUBJECT TO ANY OTHER EASEMENTS, RIGHTS OF WAY, AND RESTRICTIONS OF RECORD.



**ENGINEERING SERVICES INC.** PHONE: (734) 525-7330  
 32300 SCHOOLCRAFT ROAD  
 LIVONIA, MICHIGAN 48150 FAX: (734) 525-7255