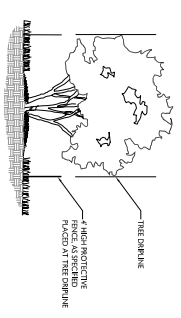
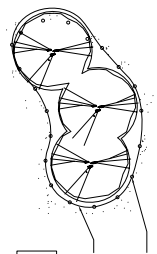


LANDSCAPING GENERAL NOTES

1. THE CONTRACTOR SHALL VERIFY ALL RIGHTS OF WAY, EASEMENTS, PROPERTY LINES, ETC. PRIOR TO COMMENCING WORK.
2. THE CONTRACTOR SHALL VERIFY THE LOCATION, DEPTH AND CONDITION OF ALL EXISTING UTILITY CONDUITS TO INCLUDE MANHOLE AND ANY OTHER CONDUITS LOCATED ON THE PROJECT.
3. ALL EXISTING UTILITIES SHALL BE MAINTAINED AND PROTECTED AT ALL TIMES. ANY DAMAGE TO EXISTING UTILITIES SHALL BE REPAIRED AT THE CONTRACTOR'S EXPENSE.
4. ALL EXISTING UTILITIES SHALL BE MAINTAINED AND PROTECTED AT ALL TIMES. ANY DAMAGE TO EXISTING UTILITIES SHALL BE REPAIRED AT THE CONTRACTOR'S EXPENSE.
5. ALL EXISTING UTILITIES SHALL BE MAINTAINED AND PROTECTED AT ALL TIMES. ANY DAMAGE TO EXISTING UTILITIES SHALL BE REPAIRED AT THE CONTRACTOR'S EXPENSE.
6. ALL EXISTING UTILITIES SHALL BE MAINTAINED AND PROTECTED AT ALL TIMES. ANY DAMAGE TO EXISTING UTILITIES SHALL BE REPAIRED AT THE CONTRACTOR'S EXPENSE.
7. ALL EXISTING UTILITIES SHALL BE MAINTAINED AND PROTECTED AT ALL TIMES. ANY DAMAGE TO EXISTING UTILITIES SHALL BE REPAIRED AT THE CONTRACTOR'S EXPENSE.
8. ALL EXISTING UTILITIES SHALL BE MAINTAINED AND PROTECTED AT ALL TIMES. ANY DAMAGE TO EXISTING UTILITIES SHALL BE REPAIRED AT THE CONTRACTOR'S EXPENSE.
9. ALL EXISTING UTILITIES SHALL BE MAINTAINED AND PROTECTED AT ALL TIMES. ANY DAMAGE TO EXISTING UTILITIES SHALL BE REPAIRED AT THE CONTRACTOR'S EXPENSE.
10. ALL EXISTING UTILITIES SHALL BE MAINTAINED AND PROTECTED AT ALL TIMES. ANY DAMAGE TO EXISTING UTILITIES SHALL BE REPAIRED AT THE CONTRACTOR'S EXPENSE.



TREE PROTECTION DETAIL SECTION
NO SCALE



TREE PROTECTION DETAIL PLAN
NO SCALE

NOTE:
ALL EXISTING UTILITIES SHALL BE MAINTAINED AND PROTECTED AT ALL TIMES. ANY DAMAGE TO EXISTING UTILITIES SHALL BE REPAIRED AT THE CONTRACTOR'S EXPENSE.

LANDSCAPE REQUIREMENTS

1. **VEHICLE USE AREA**
ALL VEHICLES SHALL BE MAINTAINED AND PROTECTED AT ALL TIMES. ANY DAMAGE TO EXISTING UTILITIES SHALL BE REPAIRED AT THE CONTRACTOR'S EXPENSE.
2. **CONFLICTING LAND USE BUFFER**
ALL CONFLICTING LAND USES SHALL BE MAINTAINED AND PROTECTED AT ALL TIMES. ANY DAMAGE TO EXISTING UTILITIES SHALL BE REPAIRED AT THE CONTRACTOR'S EXPENSE.
3. **LANDMARK TREE MITIGATION**
ALL LANDMARK TREES SHALL BE MAINTAINED AND PROTECTED AT ALL TIMES. ANY DAMAGE TO EXISTING UTILITIES SHALL BE REPAIRED AT THE CONTRACTOR'S EXPENSE.

IRIGATION GENERAL NOTES

1. LANDSCAPE CONTRACTOR SHALL PROVIDE A COMPLETE IRRIGATION SYSTEM AS PART OF THE CONTRACT.
2. THE IRRIGATION SYSTEM SHALL BE DESIGNED TO PROVIDE SUFFICIENT WATER TO ALL PLANTS AND SHRUBS.
3. THE IRRIGATION SYSTEM SHALL BE MAINTAINED AND PROTECTED AT ALL TIMES. ANY DAMAGE TO EXISTING UTILITIES SHALL BE REPAIRED AT THE CONTRACTOR'S EXPENSE.

PLANT LIST

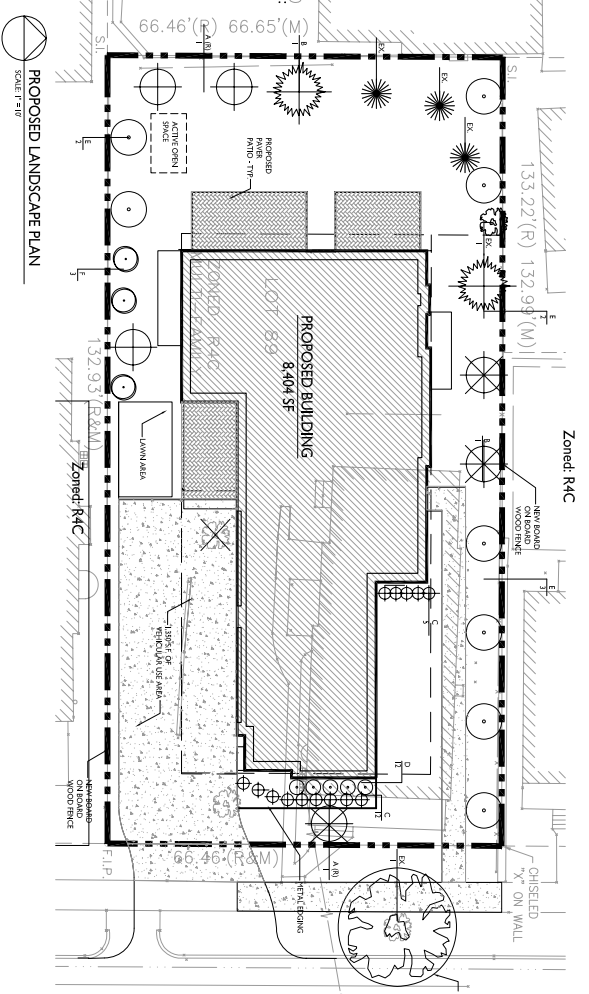
REF.	QTY.	COMMON NAME	SCIENTIFIC NAME	REMARKS
A	1	RED TWIG DOGWOOD	COENOSCYCLUS COCCINEUS	8" CALIBER
B	1	SMOOTH SPINNA	ERIGONIA SPINOSA	3" CALIBER
C	1	SMOOTH SPINNA	ERIGONIA SPINOSA	3" CALIBER
D	1	SMOOTH SPINNA	ERIGONIA SPINOSA	3" CALIBER
E	1	SMOOTH SPINNA	ERIGONIA SPINOSA	3" CALIBER
F	1	SMOOTH SPINNA	ERIGONIA SPINOSA	3" CALIBER
G	1	SMOOTH SPINNA	ERIGONIA SPINOSA	3" CALIBER
H	1	SMOOTH SPINNA	ERIGONIA SPINOSA	3" CALIBER
I	1	SMOOTH SPINNA	ERIGONIA SPINOSA	3" CALIBER
J	1	SMOOTH SPINNA	ERIGONIA SPINOSA	3" CALIBER

NOTE:

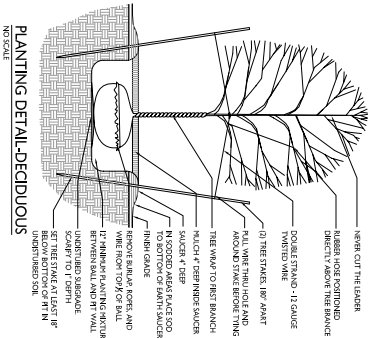
ALL FERTILIZER APPLICATION BEYOND THE PERIMETER OF THE PROPOSED PLANTINGS SHALL BE A FERTILIZER WITH NO PHOSPHORUS IN ACCORDANCE WITH ALL APPLICABLE ANN ARBOR ORDINANCES.

GENERAL TREE PROTECTION NOTES

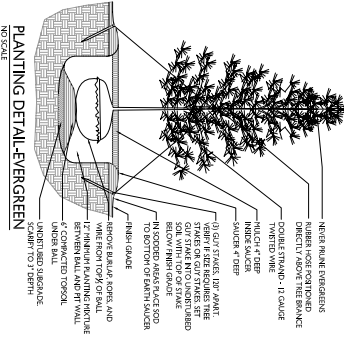
1. PROTECTED TREES SHALL BE MAINTAINED AND PROTECTED AT ALL TIMES. ANY DAMAGE TO EXISTING UTILITIES SHALL BE REPAIRED AT THE CONTRACTOR'S EXPENSE.
2. ALL EXISTING UTILITIES SHALL BE MAINTAINED AND PROTECTED AT ALL TIMES. ANY DAMAGE TO EXISTING UTILITIES SHALL BE REPAIRED AT THE CONTRACTOR'S EXPENSE.
3. ALL EXISTING UTILITIES SHALL BE MAINTAINED AND PROTECTED AT ALL TIMES. ANY DAMAGE TO EXISTING UTILITIES SHALL BE REPAIRED AT THE CONTRACTOR'S EXPENSE.
4. ALL EXISTING UTILITIES SHALL BE MAINTAINED AND PROTECTED AT ALL TIMES. ANY DAMAGE TO EXISTING UTILITIES SHALL BE REPAIRED AT THE CONTRACTOR'S EXPENSE.
5. ALL EXISTING UTILITIES SHALL BE MAINTAINED AND PROTECTED AT ALL TIMES. ANY DAMAGE TO EXISTING UTILITIES SHALL BE REPAIRED AT THE CONTRACTOR'S EXPENSE.
6. ALL EXISTING UTILITIES SHALL BE MAINTAINED AND PROTECTED AT ALL TIMES. ANY DAMAGE TO EXISTING UTILITIES SHALL BE REPAIRED AT THE CONTRACTOR'S EXPENSE.
7. ALL EXISTING UTILITIES SHALL BE MAINTAINED AND PROTECTED AT ALL TIMES. ANY DAMAGE TO EXISTING UTILITIES SHALL BE REPAIRED AT THE CONTRACTOR'S EXPENSE.
8. ALL EXISTING UTILITIES SHALL BE MAINTAINED AND PROTECTED AT ALL TIMES. ANY DAMAGE TO EXISTING UTILITIES SHALL BE REPAIRED AT THE CONTRACTOR'S EXPENSE.
9. ALL EXISTING UTILITIES SHALL BE MAINTAINED AND PROTECTED AT ALL TIMES. ANY DAMAGE TO EXISTING UTILITIES SHALL BE REPAIRED AT THE CONTRACTOR'S EXPENSE.
10. ALL EXISTING UTILITIES SHALL BE MAINTAINED AND PROTECTED AT ALL TIMES. ANY DAMAGE TO EXISTING UTILITIES SHALL BE REPAIRED AT THE CONTRACTOR'S EXPENSE.



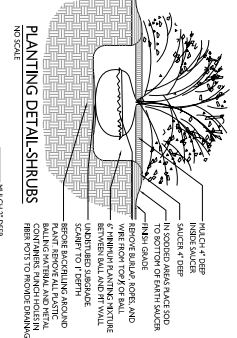
PROPOSED LANDSCAPE PLAN
SCALE: 1" = 10'



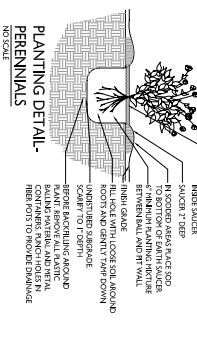
PLANTING DETAIL-DECIDUOUS
NO SCALE



PLANTING DETAIL-ENGREEN
NO SCALE



PLANTING DETAIL-SHRUBS
NO SCALE



PLANTING DETAIL-PERENNIALS
NO SCALE

BOWERS+ASSOCIATES
ARCHITECTS
2400 SOUTH HURON PARWAY • ANN ARBOR, MI 48104
P: 734.975.2400 • F: 734.975.2410
WWW.BOWERSARCH.COM

CONSULTANT + NAME

PROJECT + INFORMATION
515 N. FIFTH
515 N. FIFTH
ANN ARBOR, MI

PROJECT + NUMBER
11-207

ISSUE + DATE
19 SEPT. 2012
24 SEPT. 2012
SUBMIT

SHEET + TITLE
LANDSCAPE PLAN
11/2012/09/24/14

SHEET + NUMBER
LP1.00