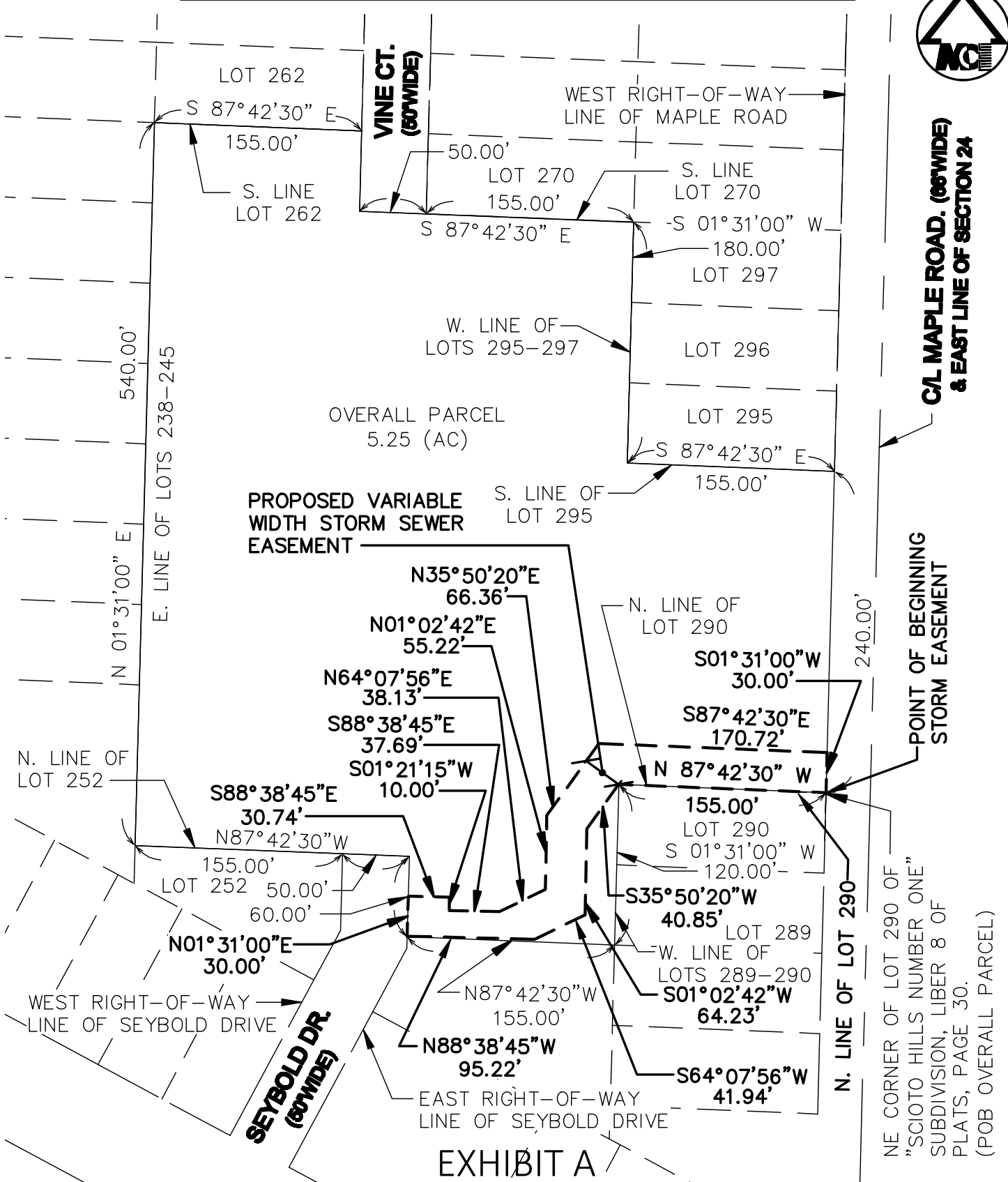


VARIABLE WIDTH STORM SEWER EASEMENT



MIDWESTERN CONSULTING



Civil, Environmental and
Transportation Engineers
Planners, Surveyors
Landscape Architects

3815 Plaza Drive
ANN ARBOR, Michigan 48108
Phone: 734.995.0200
Fax 734.995.0599

WEST ARBOR AT N. MAPLE
CITY OF ANN ARBOR

DATE: 11-05-15 JOB NO.: **14002**

SCALE: 1" = 100'



SHEET 1 OF 3