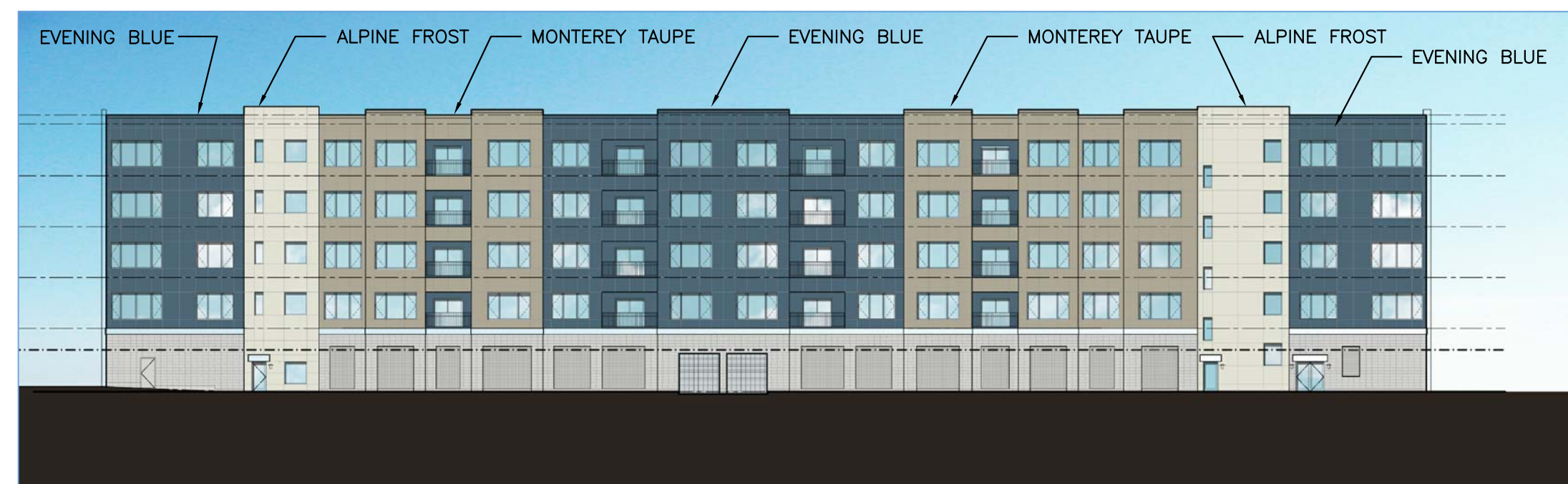




WEST ELEVATION (RESIDENTIAL) – PREVIOUSLY APPROVED



EAST ELEVATION (RETAIL) – PREVIOUSLY APPROVED



WEST ELEVATION (RESIDENTIAL) – PROPOSED REVISION



EAST ELEVATION (RETAIL) – PROPOSED REVISION

GENERAL NOTES

A  
B  
C  
D  
E  
F  
G  
H

01	ADMINISTRATIVE AMENDMENT	12-20-12
NUMBER	ISSUED FOR	DATE

**BUILT FORM**  
ARCHITECTURE 311 N. Aberdeen St. 200 C  
Chicago, IL 60607

DEVELOPER  
**The Harbor Companies**  
1900 South Telegraph Road  
Bloomfield Hills, Michigan

CIVIL ENGINEER / LANDSCAPE ARCHITECT  
**Nowak & Fraus Engineers**  
46777 Woodward Avenue  
Pontiac, MI

STRUCTURAL ENGINEER  
**Shymanski & Associates, LLC**  
30803 Northwestern Hwy, Suite 300  
Farmington Hills, MI

MECHANICAL - ELECTRICAL - PLUMBING ENGINEER  
**MA Engineering**  
200 E. Brown Street  
Birmingham, MI

PROJECT  
**Packard Square**  
Ann Arbor, Michigan

SHEET TITLE  
**Colored Elevations**

PROJECT NO. 10-146  
DATE 12.20.2012

**A002**