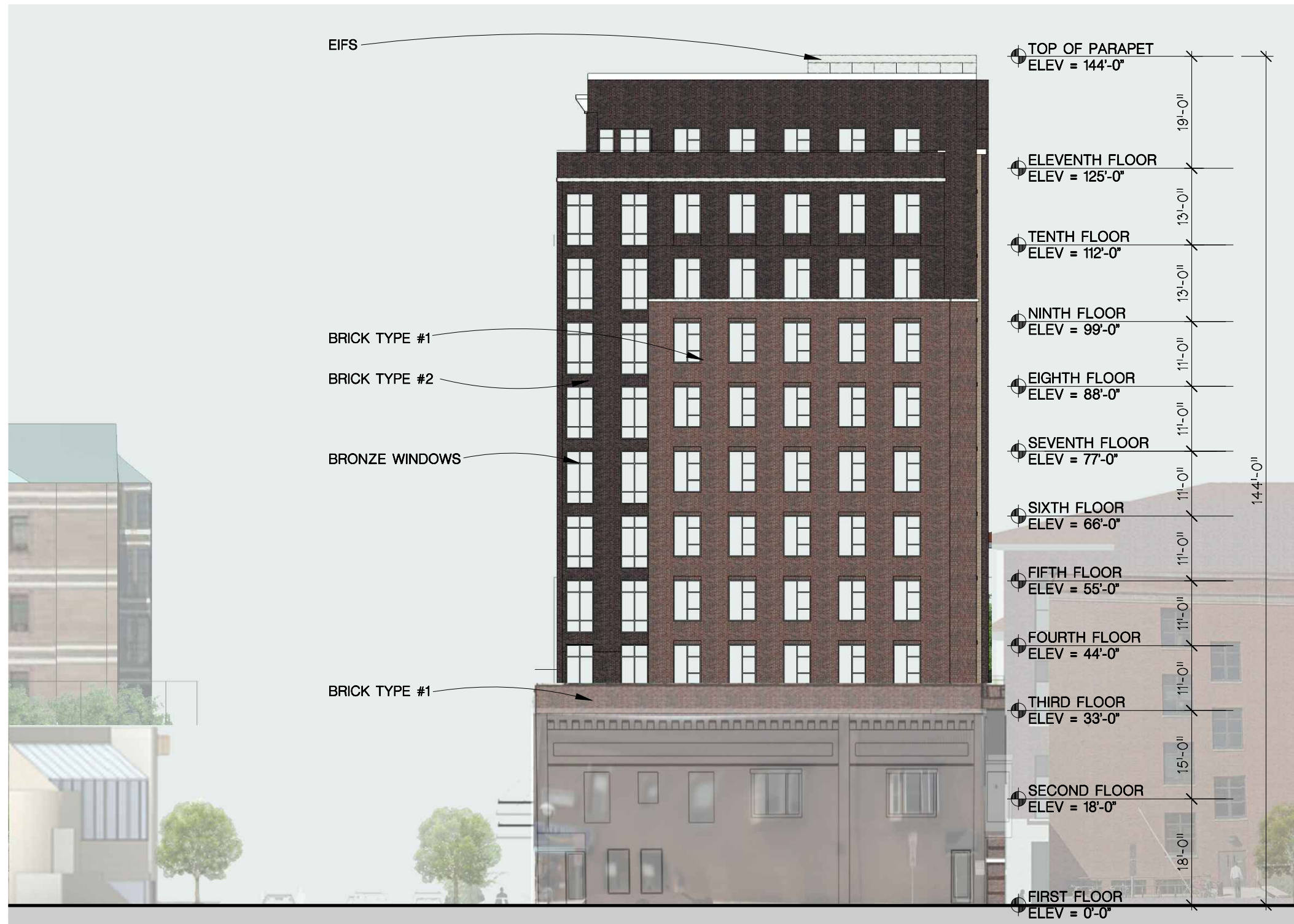






SOUTH ELEVATION

scale: 1/16" = 1'-0"



EAST ELEVATION

scale: 1/16" = 1'-0"



WEST ELEVATION

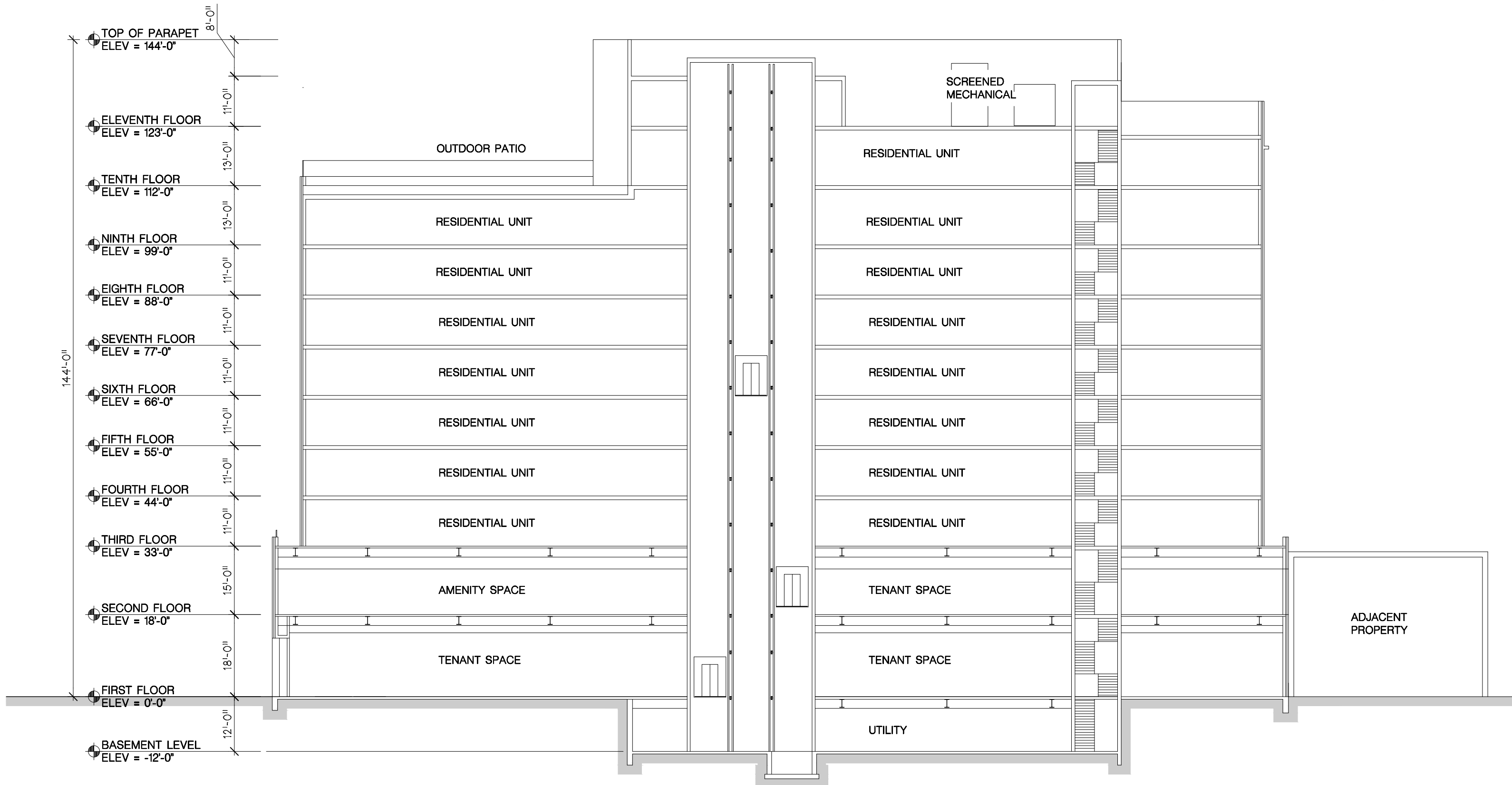
scale: 1/16" = 1'-0"



NORTH ELEVATION

scale: 1/16" = 1'-0"

BRICK TYPE #2



BUILDING SECTION

scale: 1" = 20'-0"

filename: p:\2016\16003\dwg\std\20160815 - sun elev8.dwg date printed: 7/21/2016 © 2016 Hobbs + Black Associates, Inc.