

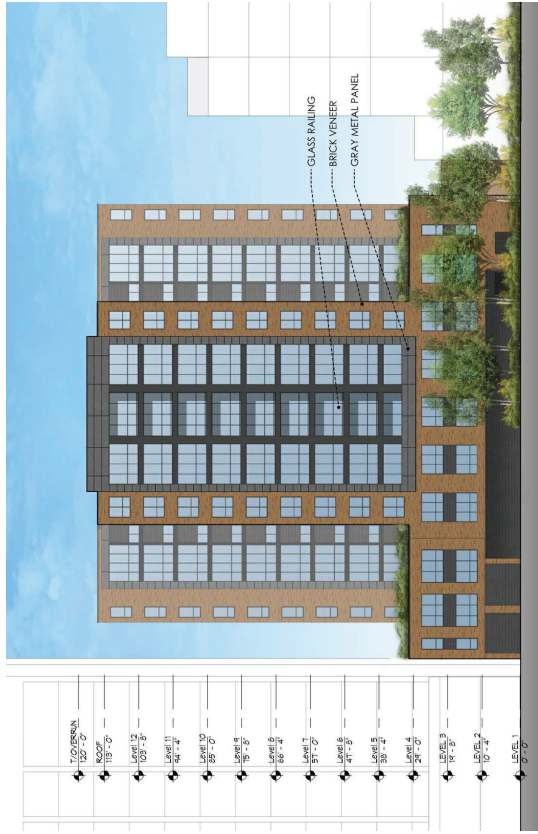
4 WEST ELEVATION
SCALE: 1/16" = 1'-0"



2 SOUTH ELEVATION
SCALE: 1/16" = 1'-0"



3 EAST ELEVATION
SCALE: 1/16" = 1'-0"



1 NORTH ELEVATION
SCALE: 1/16" = 1'-0"

DRAWN BY		Author
CHECKED BY		Checker
PROJECT ARCH		Approver
NO.	DATE	DESCRIPTION
1	03/07/2016	REV. 1.00
2	03/07/2016	REV. 1.01
3	03/07/2016	REV. 1.02
4	03/07/2016	REV. 1.03
5	03/07/2016	REV. 1.04
6	03/07/2016	REV. 1.05
7	03/07/2016	REV. 1.06
8	03/07/2016	REV. 1.07
9	03/07/2016	REV. 1.08
10	03/07/2016	REV. 1.09
11	03/07/2016	REV. 1.10
12	03/07/2016	REV. 1.11
13	03/07/2016	REV. 1.12
14	03/07/2016	REV. 1.13
15	03/07/2016	REV. 1.14
16	03/07/2016	REV. 1.15
17	03/07/2016	REV. 1.16
18	03/07/2016	REV. 1.17
19	03/07/2016	REV. 1.18
20	03/07/2016	REV. 1.19
21	03/07/2016	REV. 1.20
22	03/07/2016	REV. 1.21
23	03/07/2016	REV. 1.22
24	03/07/2016	REV. 1.23
25	03/07/2016	REV. 1.24
26	03/07/2016	REV. 1.25
27	03/07/2016	REV. 1.26
28	03/07/2016	REV. 1.27
29	03/07/2016	REV. 1.28
30	03/07/2016	REV. 1.29
31	03/07/2016	REV. 1.30
32	03/07/2016	REV. 1.31
33	03/07/2016	REV. 1.32
34	03/07/2016	REV. 1.33
35	03/07/2016	REV. 1.34
36	03/07/2016	REV. 1.35
37	03/07/2016	REV. 1.36
38	03/07/2016	REV. 1.37
39	03/07/2016	REV. 1.38
40	03/07/2016	REV. 1.39
41	03/07/2016	REV. 1.40
42	03/07/2016	REV. 1.41
43	03/07/2016	REV. 1.42
44	03/07/2016	REV. 1.43
45	03/07/2016	REV. 1.44
46	03/07/2016	REV. 1.45
47	03/07/2016	REV. 1.46
48	03/07/2016	REV. 1.47
49	03/07/2016	REV. 1.48
50	03/07/2016	REV. 1.49
51	03/07/2016	REV. 1.50
52	03/07/2016	REV. 1.51
53	03/07/2016	REV. 1.52
54	03/07/2016	REV. 1.53
55	03/07/2016	REV. 1.54
56	03/07/2016	REV. 1.55
57	03/07/2016	REV. 1.56
58	03/07/2016	REV. 1.57
59	03/07/2016	REV. 1.58
60	03/07/2016	REV. 1.59
61	03/07/2016	REV. 1.60
62	03/07/2016	REV. 1.61
63	03/07/2016	REV. 1.62
64	03/07/2016	REV. 1.63
65	03/07/2016	REV. 1.64
66	03/07/2016	REV. 1.65
67	03/07/2016	REV. 1.66
68	03/07/2016	REV. 1.67
69	03/07/2016	REV. 1.68
70	03/07/2016	REV. 1.69
71	03/07/2016	REV. 1.70
72	03/07/2016	REV. 1.71
73	03/07/2016	REV. 1.72
74	03/07/2016	REV. 1.73
75	03/07/2016	REV. 1.74
76	03/07/2016	REV. 1.75
77	03/07/2016	REV. 1.76
78	03/07/2016	REV. 1.77
79	03/07/2016	REV. 1.78
80	03/07/2016	REV. 1.79
81	03/07/2016	REV. 1.80
82	03/07/2016	REV. 1.81
83	03/07/2016	REV. 1.82
84	03/07/2016	REV. 1.83
85	03/07/2016	REV. 1.84
86	03/07/2016	REV. 1.85
87	03/07/2016	REV. 1.86
88	03/07/2016	REV. 1.87
89	03/07/2016	REV. 1.88
90	03/07/2016	REV. 1.89
91	03/07/2016	REV. 1.90
92	03/07/2016	REV. 1.91
93	03/07/2016	REV. 1.92
94	03/07/2016	REV. 1.93
95	03/07/2016	REV. 1.94
96	03/07/2016	REV. 1.95
97	03/07/2016	REV. 1.96
98	03/07/2016	REV. 1.97
99	03/07/2016	REV. 1.98
100	03/07/2016	REV. 1.99
101	03/07/2016	REV. 2.00

**PRELIMINARY
NOT FOR
CONSTRUCTION**

803 E HURON

513 & 603 E HURON
ANN ARBOR, MI



810 DAVIS STREET 5TH FLOOR
ANN ARBOR, MI 48106-1501
TEL: 734.769.4444
WWW.MYEFKIARCHITECTS.COM

JOB NO	15028
DATE	03.07.2016
ELEVATIONS	A05

