

NOTICE OF PROPOSED LAND DIVISION

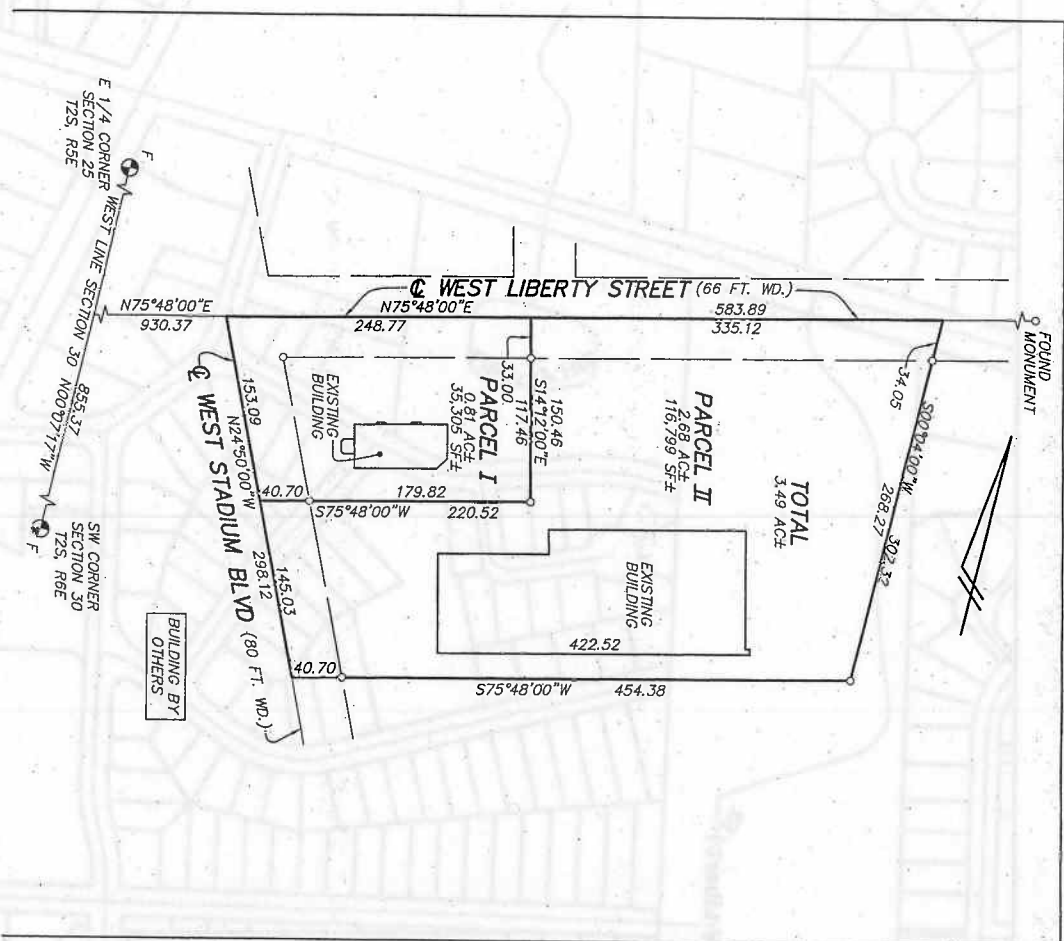
TO: Property Owners and Occupants Within 300 Feet of This Proposal
 FROM: Planning and Development Services
 DATE: September 3, 2010

The following land division request has been received by Planning and Development Services and is being reviewed by City staff.

Calvert and LaSalle Land Division – A proposal to divide the existing 3.28-acre parcel at the southeast corner of West Stadium Boulevard and West Liberty Street into two separate parcels for commercial use.

If you would like additional information, or would like to provide comments or suggestions to the staff, please call us at 734-794-6265, or visit our office (8:00 a.m. to 5:00 p.m. weekdays) on the sixth floor of the Guy C. Larcom, Jr. Municipal Building (City Hall). Your comments must be received in our office by September 17, 2010 to be considered prior to the end of the review period. Additionally, you may address the City Planning Commission in person at its meeting on September 21, 2010 during the Audience Participation periods (Agenda items 6 and 9).

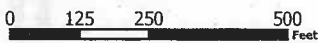
Please note that the State of Michigan Land Division Act specifies a specific set of standards with which to review land divisions. As long as a proposed land division meets the standards set forth by state law, it shall be approved. For this reason, our City ordinance has established an administrative process for the approval of land divisions. The City Planning Commission does not have any discretion or input into the approval of the above land division. All written comments submitted to City staff will be transmitted to the City Planning Commission and will become part of the public record in this matter.



2180 W Stadium Blvd



Map Legend
▣ Parcels



City of Ann Arbor Map Disclaimer:
No part of this product shall be reproduced or transmitted in any form or by any means, electronic or mechanical, for any purpose, without prior written permission from the City of Ann Arbor.
This map complies with National Map Accuracy Standards for mapping at a scale of 1 inch = 100 feet. The City of Ann Arbor and its mapping contractors assume no legal responsibility for the content and/or inappropriate use of information on this map.
Map Created: 9/14/2010