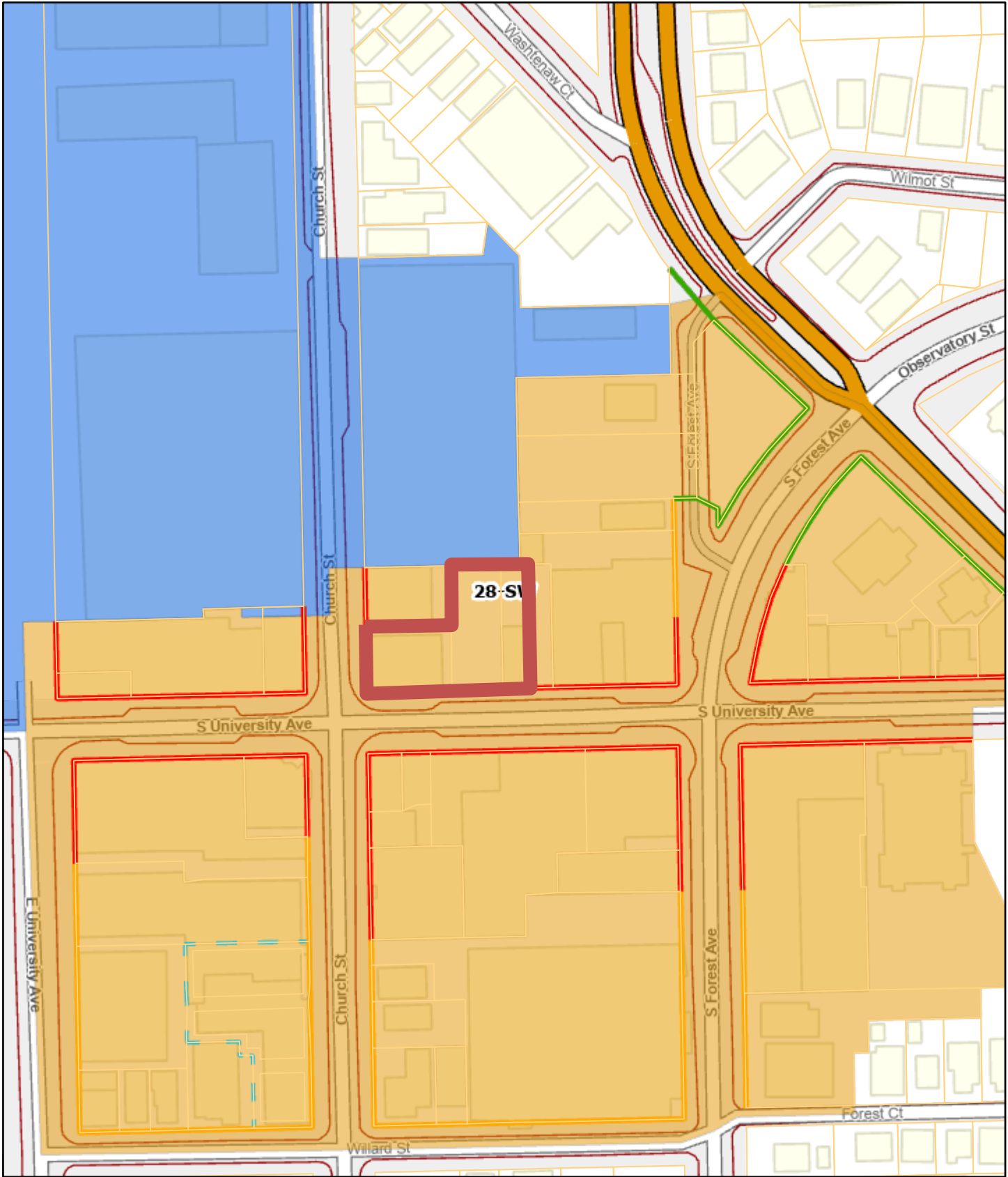


This is an aerial map of the University Forest area in Berkeley, California. The map shows several streets: S University Ave running horizontally across the middle, Church St running vertically on the left, S Forest Ave running vertically on the right, Wilmot St running horizontally at the top right, and Observatory St running diagonally at the top right. A red outline highlights a specific lot on Church St, labeled 'D1'. Other lots are labeled 'D2' and 'PL'. The map also shows various building footprints and green spaces.

1209 S University Ave - Overlay Districts and Street Types



6/26/2024, 3:03:39 PM

- Override 1

Parcels

Street Type Designations

Primary

Secondary

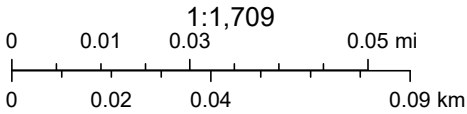
Front Yard
- Downtown Character Areas

South University

Central Campus

Quarter Sections

Common Parcels



City of Ann Arbor