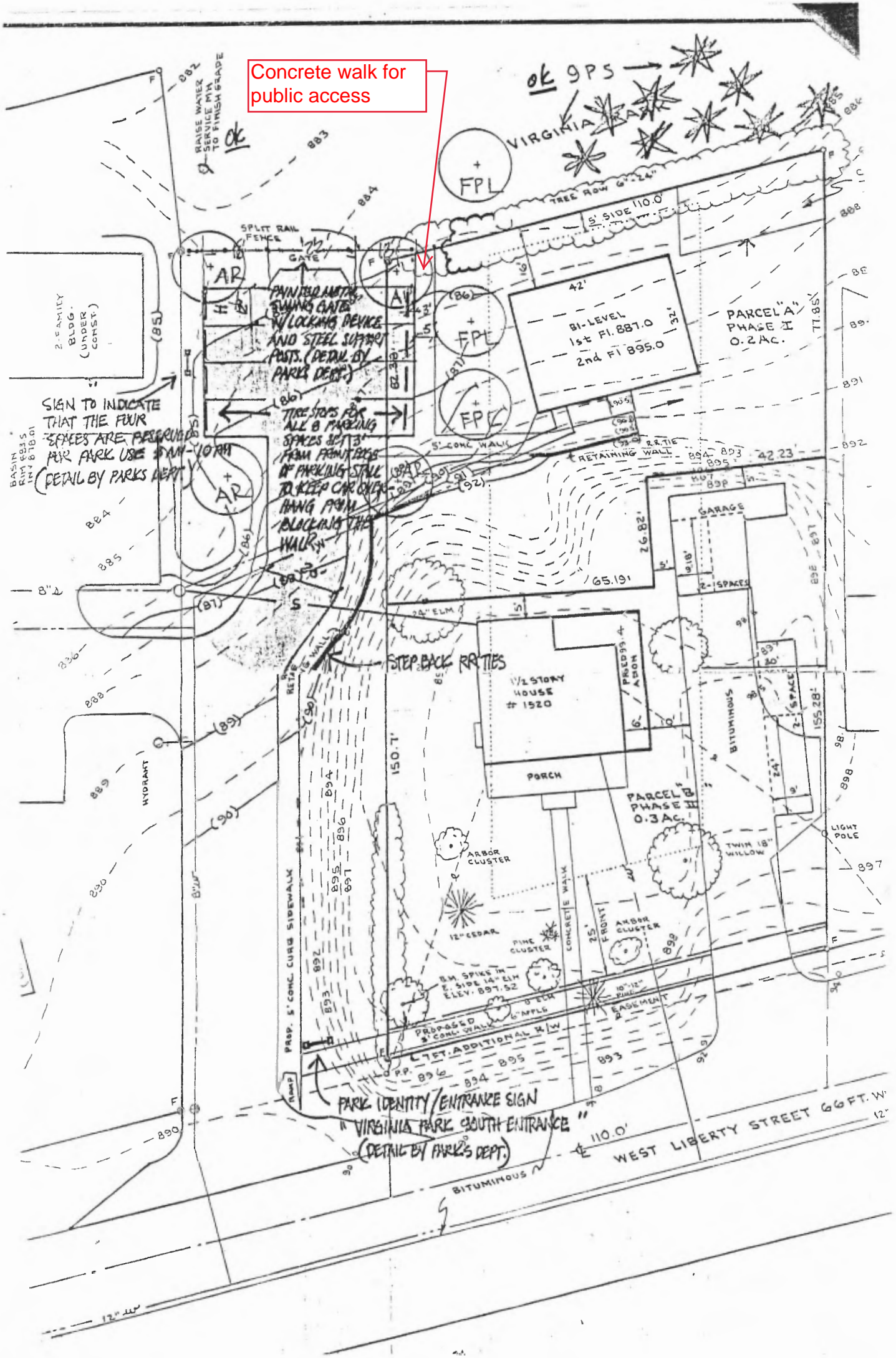


Concrete walk for public access



2-FAMILY BLDG. (UNDER CONST.)

PAINTED METAL SWINGING GATE WITH LOCKING DEVICE AND STEEL SUPPORT POSTS. (DETAIL BY PARKS DEPT.)

TIRE STOPS FOR ALL 8 PARKING SPACES 3 FT 3" FROM FRONT/REAR OF PARKING STALL TO KEEP CAR ONLY FROM BLOCKING THE WALKWAY

PARK IDENTITY/ENTRANCE SIGN "VIRGINIA PARK SOUTH ENTRANCE" (DETAIL BY PARKS DEPT.)

WEST LIBERTY STREET 66 FT. W