

Proposed Preserves and Justification for Designation

Barton

- High Floristic Quality (FQI > 50)
- Ecosystems: Fen, Prairie, Savanna, Sedge meadow, Shrub land, Woodland
- Large block of wildlife habitat (86.5 acres + adjacent natural areas)
- Adjacent to the Huron River
- Note-worthy Species: Birds (American Woodcock, Blue-winged Warblers, Field Sparrows, Coopers Hawk); Butterflies (Black Dash, Black Swallowtail, Broad-winged Skipper, Harvester, Wild Indigo Duskywing); Reptiles (Three species of turtle unlisted for protection); Plants (winged loosestrife, wild senna, smooth false foxglove, yellow pimpernel, Ladies' tresses orchid, swamp-betony, great waterdock, whorled loosestrife)

Bird Hills

- High Floristic Quality (FQI > 50)
- Ecosystems: Open Water, Shrub land, Woodland
- Large block of wildlife habitat (145 acres + adjacent natural areas)
- Adjacent to the Huron River
- Note-worthy Species: Birds (Hooded Warbler, Scarlet Tanager); Butterflies (Black Swallowtail, Wild Indigo Duskywing); Reptiles and Amphibians (Red-backed Salamanders, Northern Brown Snake); Plants (twinleaf, broad-leaved puccoon, smooth false foxglove, red mulberry, moosewood, butternut, American chestnut)

Black Pond Woods

- High Floristic Quality (FQI > 50)
- Ecosystems: Savanna, Shrub land, Vernal ponds, Woodland
- Large block of wildlife habitat (32.1 acres + adjacent natural areas)
- Note-worthy Species: Birds (Carolina Wren, Brown Thrasher), Butterflies (Black Swallowtail, Broad-winged Skipper, Harvester, Wild Indigo Duskywing); Reptiles and Amphibians (3 species of turtles unlisted for protection, Spotted Salamander, Blue-spotted Salamander, Red-backed Salamander, Tremblay's Salamander, Red-spotted Newt, Gray Tree Frog, Green Frog, Wood Frog, American Toad, Spring Peeper, Chorus Frog); Plants (lily-leaved twayblade, swamp saxifrage, yellow water crowfoot)

Cedar Bend –

- Ann Arbor's oldest park (over 100 years old)
- High Floristic Quality (FQI > 50)
- Ecosystems: Savanna, Shrub land, Woodland
- Large block of wildlife habitat (16.5 acres + adjacent natural areas)
- Adjacent to the Huron River
- Note-worthy Species: Birds (Carolina Wren), Plants (upland boneset, wood betony, early buttercup, smooth false foxglove, green dragon, yellow pimpernel)

Dolph –

- High Floristic Quality (FQI > 50)
- High quality migratory bird habitat
- Ecosystems: Bog, Open Water, Shrub land, Woodland

- Large block of wildlife habitat (66.25 acres + adjacent natural areas)
- Note-worthy Species: Birds (American Bittern, Virginia Rail, Connecticut Warbler, Kentucky Warbler, Sora Rail, over 140 species); Butterflies (Black Dash, Black Swallowtail); Reptiles and Amphibians (Turtles unlisted for protection, Gray Tree Frog, Green Frog, Wood Frog, Spring Peeper, Chorus Frog, American Toad, Bullfrog); Plants (lily-leaved twayblade, ladies' tresses orchid, bog birch)

Mary Beth Doyle

- Owned by County – “preserve” designation only limits City’s activities
- High Floristic Quality (FQI > 50)
- Ecosystems: Woodland
- Large block of wildlife habitat (21.8 acres + adjacent natural areas)
- Note-worthy Species: Birds (Red-shouldered Hawk, Grasshopper Sparrow), Butterflies (Black Swallowtail, Harvester, Wild Indigo Duskywing); Plants (drooping trillium, green dragon, prairie rose)

Furstenberg

- High Floristic Quality (FQI > 50)
- Ecosystems: Prairie, Savanna, Sedge meadow, Shrub land, Woodland
- Large block of wildlife habitat (34 acres + adjacent natural areas)
- Adjacent to the Huron River
- Note-worthy Species: Birds (Trumpeter Swans, Olive-sided Flycatchers, Eastern Bluebird), Butterflies (Acadian Hairstreak, Black Dash, Black Swallowtail, Harvester, Wild Indigo Duskywing); Reptiles (Five species of turtles unlisted for protection); Plants (smooth false foxglove, lily-leaved twayblade, yellow pimpernel, Leiberg’s panic grass, green dragon, swamp betony, purple milkweed, shrubby cinquefoil)

Gallup Wet Prairie

- High Floristic Quality (FQI > 50)
- Ecosystems: Prairie, Sedge meadow, Shrub land, Woodland
- Large block of wildlife habitat (8.4 acres + adjacent natural areas)
- Adjacent to the Huron River
- Note-worthy Species: Birds (Marsh Wren), Butterflies (Acadian Hairstreak, Black Dash, Black Swallowtail, Harvester, Wild Indigo Duskywing), Plants (sweet grass, star-grass, swamp saxifrage)

Scarlett Mitchell

- High Floristic Quality (FQI > 50)
- Ecosystems: Sedge meadow, Shrub land, Vernal ponds, Woodland
- Large block of wildlife habitat (48.4 acres + adjacent natural areas)
- Note-worthy Species: Birds (Hooded Warbler, American Bittern, Virginia Rail,); Butterflies (Black Swallowtail); Amphibians (Spotted Salamander, Blue-spotted Salamander, Red-backed Salamander, Tremblay’s Salamander, Red-spotted Newt, Chorus frog, Grey Tree Frog, Green Frog, Spring Peeper, Wood Frog); Plants (false loosestrife, early buttercup)

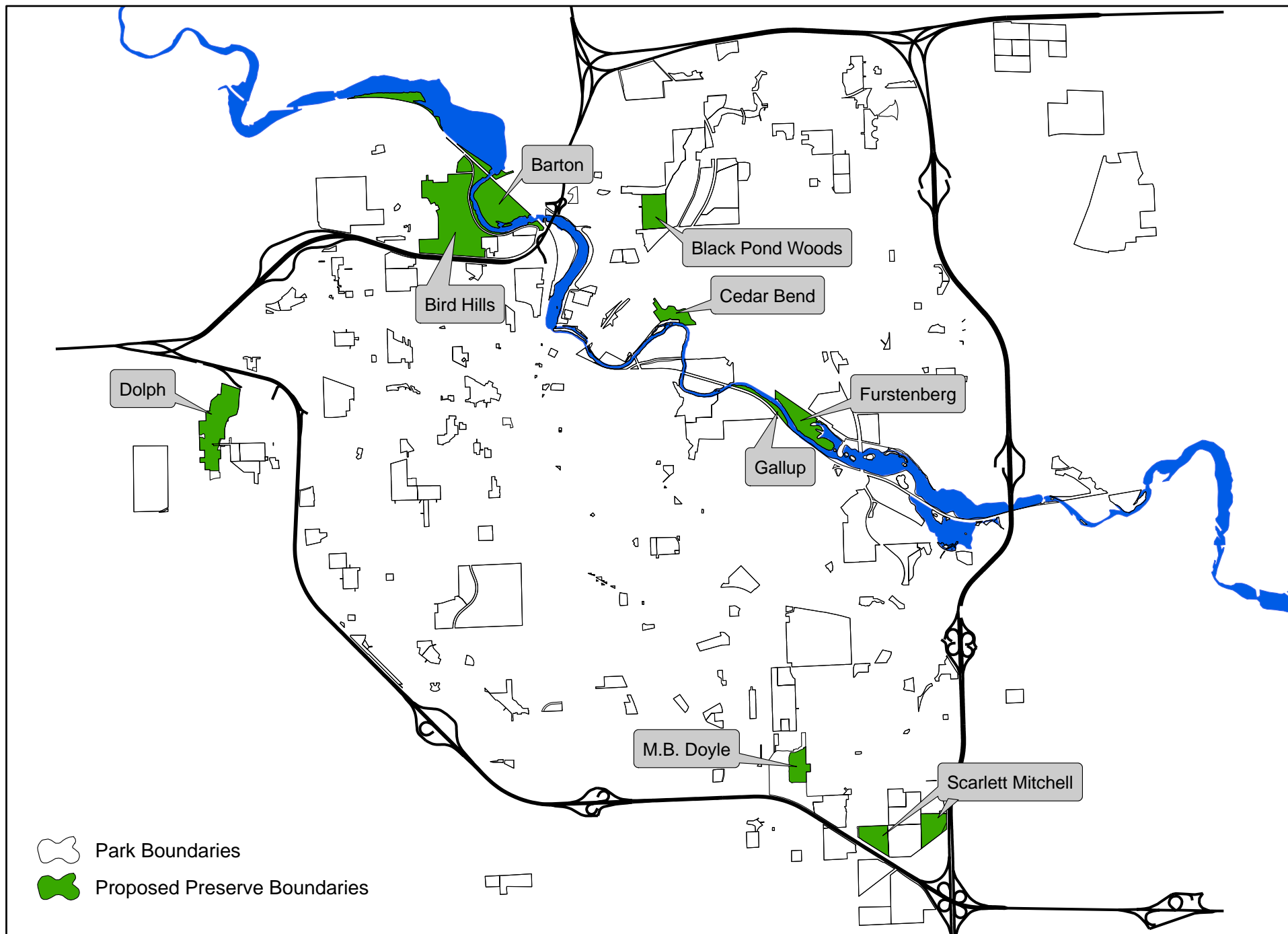
Floristic Quality and Floristic Quality Index (FQI) - "Areas with a FQI higher than 35 possess sufficient conservatism and richness that they are floristically important from a statewide perspective. Areas registering in the 50s or higher are extremely rare and represent a significant component of Michigan's native biodiversity and natural landscapes." 1 Herman, K. D., L. A. Masters, M. R. Penskar, A. A. Reznicek, G. S. Wilhelm, and W. W. Brodovich, and K. P. Gardiner. 2001. Floristic Quality Assessment with Wetland Categories and Examples of Computer Applications for the State of Michigan – Revised, 2nd Edition. Michigan Department of Natural Resources, Wildlife Division, Natural Heritage Program. Lansing, MI. 19 p. + Appendices.



Natural Areas and Parks		Ownership	Approximate Preserve Area (acres)	Approximate Non-Preserve Area (acres)	Total Park Acres	Ecosystems in Preserve Area	High Floristic Quality (FQI >50)	Large Wildlife Habitat Block (>20 acres + adjacent natural areas)	Adjacent to Huron River	Note-worthy Species
Barton	City	86.5	12.6	99.1	Fen, Prairie, Savanna, Sedge meadow, Shurb land, Woodland	•	•	•	Birds (American Woodcock, Blue-winged Warblers, Field Sparrows, Coopers Hawk); Butterflies (Black Dash, Black Swallowtail, Broad-winged Skipper, Harvester, Wild Indigo Duskywing); Reptiles (Three species of turtle unlisted for protection); Plants (winged loosestrife, wild senna, smooth false foxglove, yellow pimpernel, Ladies' tresses orchid, swamp-betony, great waterdock, whorled loosestrife)	
Bird Hills	City	145.0	1.1	146.1	Open water, Shrubland, Woodland	•	•	•	Birds (Hooded Warbler, Scarlet Tanager); Butterflies (Black Swallowtail, Wild Indigo Duskywing); Reptiles and Amphibians (Red-backed Salamanders, Northern brown snake); Plants (twinleaf, broad-leaved puccoon, smooth false foxglove, red mulberry, moosewood, butternut, American chestnut)	
Black Pond Woods	City	32.2		32.2	Savanna, Shrubland, Vernal Ponds, Woodland	•	•		Birds (Carolina Wren, Brown Thrasher), Butterflies (Black Swallowtail, Broad-winged Skipper, Harvester, Wild Indigo Duskywing); Reptiles and Amphibians (Turtles unlisted for protection, Spotted Salamander, Blue-spotted Salamander, Red-backed Salamander, Tremblay's Salamander, Red-spotted Newt, Gray Tree Frog, Green Frog, Wood Frog, American Toad, Spring Peeper, Chorus Frog); Plants (lily-leaved twayblade, swamp saxifrage, yellow water crowfoot)	
Cedar Bend	City	16.5	2.4	18.9	Savanna, Shrubland, Woodland	•	•	•	Birds (Carolina Wren), Plants (upland boneset, wood betony, early buttercup, smooth false foxglove, green dragon, yellow pimpernel)	
Dolph	City	66.3	9.1	75.4	Bog, Open water, Shrubland, Woodland	•	•		Birds (American Bittern, Virginia Rail, Connecticut Warbler, Kentucky Warbler, Sora Rail, over 140 species); Butterflies (Black Dash, Black Swallowtail); Reptiles and Amphibians (3 species turtles unlisted for protection, Gray Tree Frog, Green Frog, Wood Frog, Spring Peeper, Chorus Frog, American Toad, Bullfrog); Plants (lily-leaved twayblade, Ladies' tresses orchid, bog birch)	
Doyle, Mary Beth*	County	21.8	58.7	80.5	Woodland	•	•		Birds (Red-shouldered Hawk, Grasshopper Sparrow); Butterflies (Black Swallowtail, Harvester, Wild Indigo Duskywing); Plants (drooping trillium, green dragon, prairie rose)	
Furstenberg	City	34.0	3.7	37.7	Prairie, Savanna, Sedge meadow, Shrubland, Woodland	•	•	•	Birds (Trumpeter Swans, Olive-sided Flycatchers, Eastern Bluebird); Butterflies (Acadian Hairstreak, Black Dash, Black Swallowtail, Harvester, Wild Indigo Duskywing); Reptiles (Five species of turtles unlisted for protection); Plants (smooth false foxglove, lily-leaved twayblade, yellow pimpernel, Leiberg's panic grass, green dragon, swamp betony, purple milkweed, shrubby cinquefoil)	
Gallup	City	8.4	43.0	51.4	Prairie, Sedge meadow, Shrubland, Woodland	•	•	•	Birds (Marsh Wren); Butterflies (Acadian Hairstreak, Black Dash, Black Swallowtail, Harvester, Wild Indigo Duskywing); Plants (sweet grass, star-grass, swamp saxifrage)	
Scarlett Mitchell	City	49.1		49.1	Sedge meadow, Shrubland, Vernal ponds, Woodland	•	•		Birds (American Bittern, Virginia Rail, Hooded Warbler); Butterflies (Black Swallowtail); Amphibians (Spotted Salamander, Blue-spotted Salamander, Red-backed Salamander, Tremblay's Salamander, Red-spotted Newt, Chorus Frog, Grey Tree Frog, Green Frog, Spring Peeper, Wood Frog); Plants (false loosestrife, early buttercup)	
Tally of Sites		9	7	9		9	9	5		
Total (acres)		459.8	130.6	590.4						

Floristic Quality and Floristic Quality Index (FQI) - "Areas with a FQI higher than 35 possess sufficient conservatism and richness that they are floristically important from a statewide perspective. Areas registering in the 50s or higher are extremely rare and represent a significant component of Michigan's native biodiversity and natural landscapes." Herman, K. D., L. A. Masters, M. R. Penskar, A. A. Reznick, G. S. Wilhelm, and W. W. Brodovich, and K. P. Gardiner. 2001. Floristic Quality Assessment with Wetland Categories and Examples of Computer Applications for the State of Michigan – Revised, 2nd Edition. Michigan Department of Natural Resources, Wildlife Division, Natural Heritage Program. Lansing, MI. 19 p. + Appendices.

* - 'Preserve' designation only limits City's activities, not County's

Proposed Initial Preserves



-  Park Boundaries
-  Proposed Preserve Boundaries

0 0.5 1 2 3 4 Miles

Proposed Initial Preserves - Furstenberg & Gallup Nature Areas



Gallup Nature Area

FULLER

Furstenberg Nature Area



Proposed Preserve Boundaries



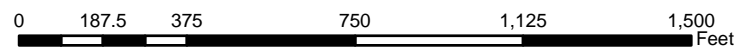
Park Boundaries

Note-worthy Species

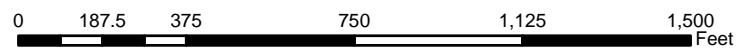


0 187.5 375 750 1,125 1,500 Feet

Proposed Initial Preserves - Barton Nature Areas (1 of 2)



Proposed Initial Preserves - Barton Nature Areas (2 of 2)



Proposed Initial Preserves - Bird Hills Nature Area



0 187.5 375 750 1,125 1,500 Feet

Proposed Initial Preserves - Black Pond Woods Nature Area



Note-worthy Species



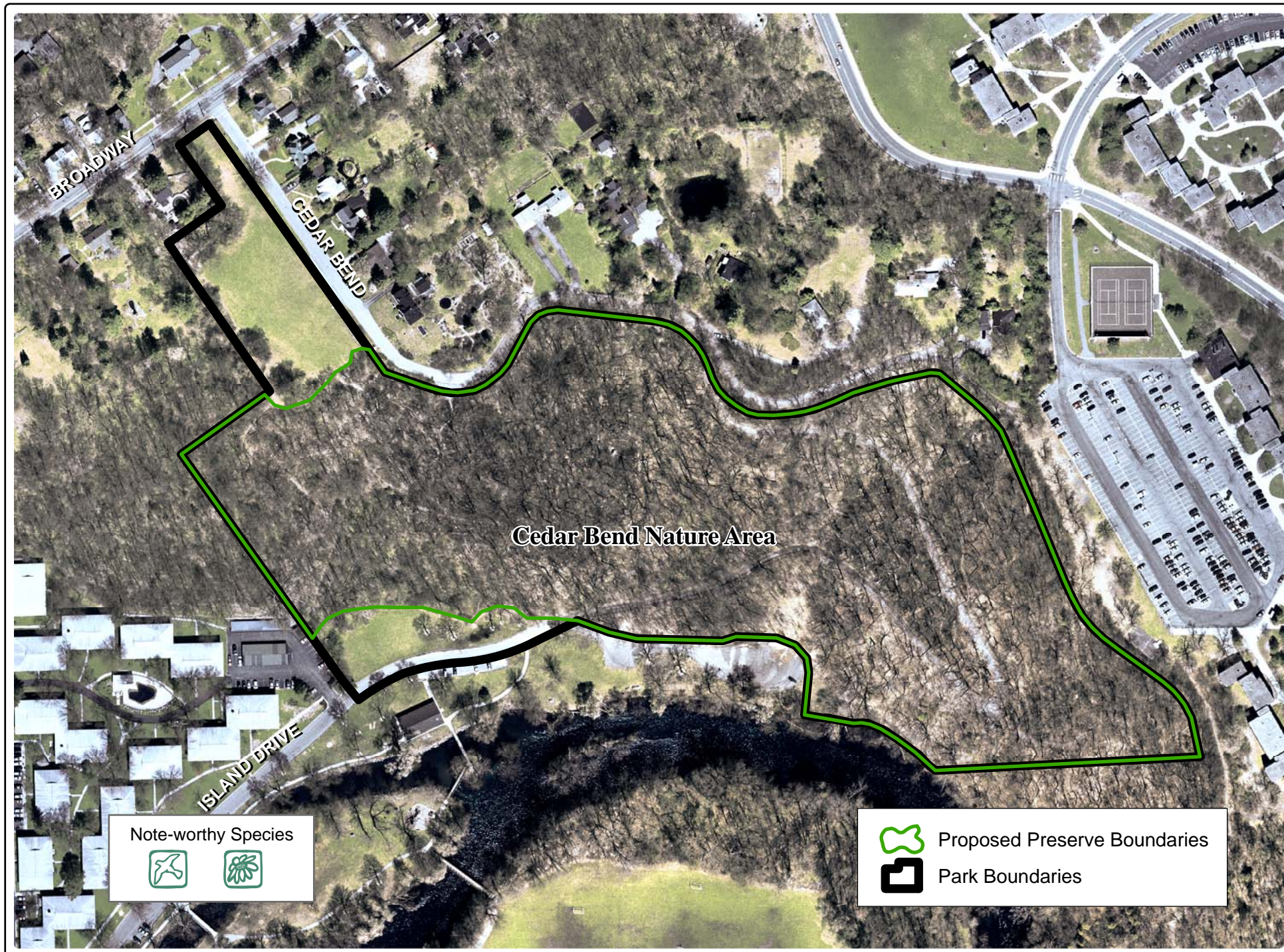
Proposed Preserve Boundaries



Park Boundaries

0 100 200 400 600 800 Feet

Proposed Initial Preserves - Cedar Bend Nature Areas



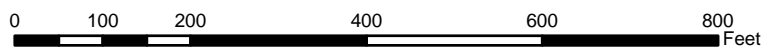
Note-worthy Species



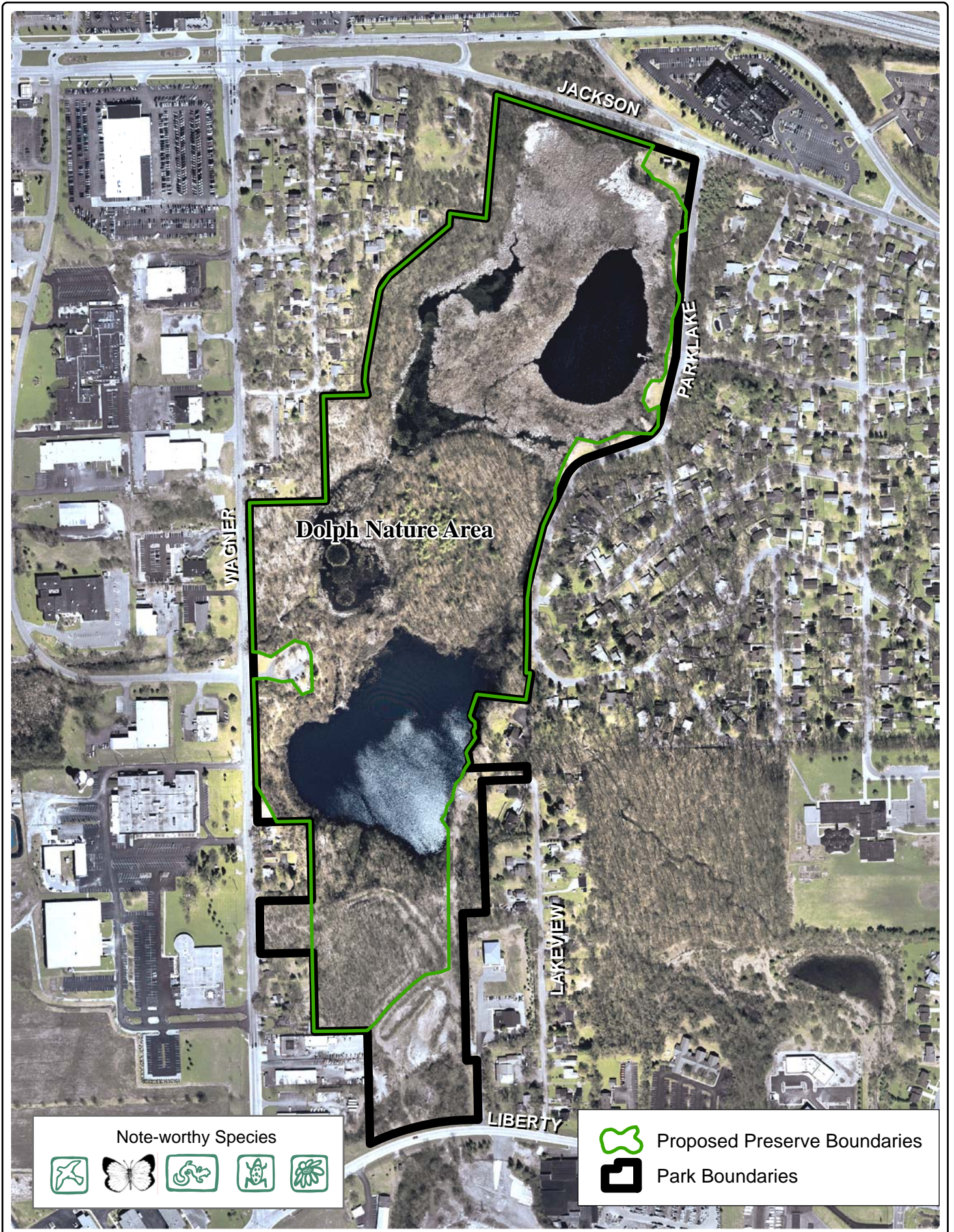
Proposed Preserve Boundaries



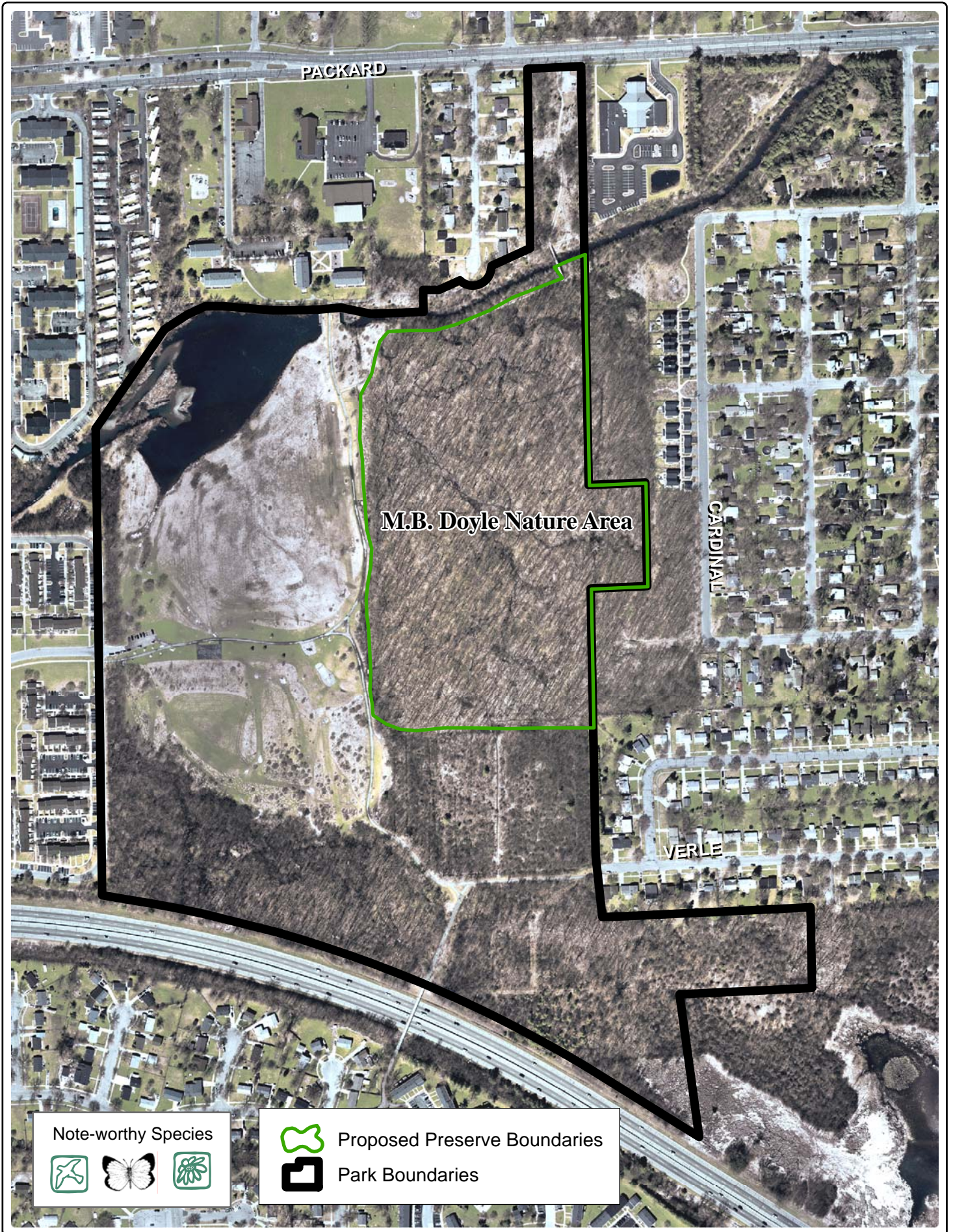
Park Boundaries



Proposed Initial Preserves - Dolph Nature Area



Proposed Initial Preserves - Mary Beth Doyle Nature Area



Note-worthy Species



Proposed Preserve Boundaries

Park Boundaries

0 187.5 375 750 1,125 1,500 Feet

Proposed Initial Preserves - Scarlett Mitchell Nature Area



Scarlett Mitchell Nature Area

Mitchell Scarlett Woods
(AAPS)

Scarlett Mitchell Nature Area



PLATT

ELLSWORTH

US-23

Note-worthy Species



-  Proposed Preserve Boundaries
-  Park Boundaries

0 187.5 375 750 1,125 1,500 Feet

RECOMMENDATION TO ESTABLISH *PRESERVE* AREAS WITHIN THE CITY PARK SYSTEM

Whereas, the goals of the City of Ann Arbor Natural Features Master Plan 2004 call for preserving high-quality woodlands and prairies, and protecting native forest and savanna fragments, and habitats rich in native flora and fauna. The disturbance of such areas can cause the introduction of invasive and destructive species along with erosion and other detrimental effects on plant and wildlife habitat;

Whereas, the 2006-2010 PROS plan states that “the Nature Preserve designation signifies that these are the highest quality natural areas within the City and thus deserve the highest level of protection.”;

Whereas, the City of Ann Arbor recognizes that the preservation of nature’s diversity is an important goal;

Whereas, for many urban residents, an opportunity to experience an environment where non-human forces define the landscape is a valued respite from everyday life and a recreational and visual resource;

Whereas, the City has extensive ‘natural areas’ in our parklands that contribute to these goals;

Whereas, the Natural Area Preservation program (NAP) has undertaken an extensive analysis of the ecological status of natural areas within the city parklands, and classified them, based on floristic quality, as either Conservation Areas (higher quality, restorable sites) or Greenspace (lower quality disturbed sites);

Whereas, the Natural Area Preservation program has designated as Wildlife Sanctuaries those Conservation Areas or Greenspace that meet one or more of these criteria: A) part of a contiguous block of 20+ acres of Natural Area or other undeveloped habitat, or B) part of a contiguous block of 5+ acres of Natural Area or other undeveloped habitat and adjacent to the Huron River or one of its tributaries, or C) known to contain useable habitat for note-worthy species of wildlife;

Whereas, at the present time there are no development restrictions on the use of our natural area parklands;

Resolved, the Parks Advisory Commission recommends that Council designate certain parklands as *Preserves*, as described in the 2006-2011 PROS Plan, in order to protect the ecological integrity and character of the *Preserve* for present and future generations. *Preserve* sites are designated based on floristic quality, biodiversity of native plant and animal species and habitat, sensitivity to disturbance, and ecological integrity, and proximity to the Huron River;

Resolved, the City will not build on, develop, or grade parkland designated as *Preserve* for any purpose, including athletic fields or facilities, or off-trail uses. Trail maintenance, trail development, and recreational and educational activities that the Natural Area Protection program finds do not negatively affect the ecological resources of the *Preserve* are allowed. Maintenance to existing underground infrastructure is permitted in *Preserves*, provided that the disturbed area is restored to its original state.

Resolved, the Parks Advisory Commission recommends that the following Conservation Areas and Wildlife Sanctuaries as shown on the attached Natural Area Preservation maps be designated as “*Preserves*”: Furstenberg Nature Area, Gallup Park Wet Prairie, Barton Nature Area, Bird Hills Nature Area, Cedar Bend Nature Area Woods, Dolph Nature Area, Mary Beth Doyle Nature Area Woods, Scarlett Mitchell Nature Area, and Black Ponds Woods Nature Area. Excluded from the *Preserves* are the existing parking, picnic, garden, mowed, or otherwise developed areas.

Resolved, that PAC will hold a public hearing on designating the above parkland areas as "*Preserves*";

Resolved, the Parks Advisory Commission recommends that designation of additional *Preserves* or modification of boundaries of existing *Preserves* shall be by Resolution of the Parks Advisory Commission and approval by City Council.

Resolution submitted by Gwen Nystuen and Scott Rosencrans October 2007