

**LEGEND**

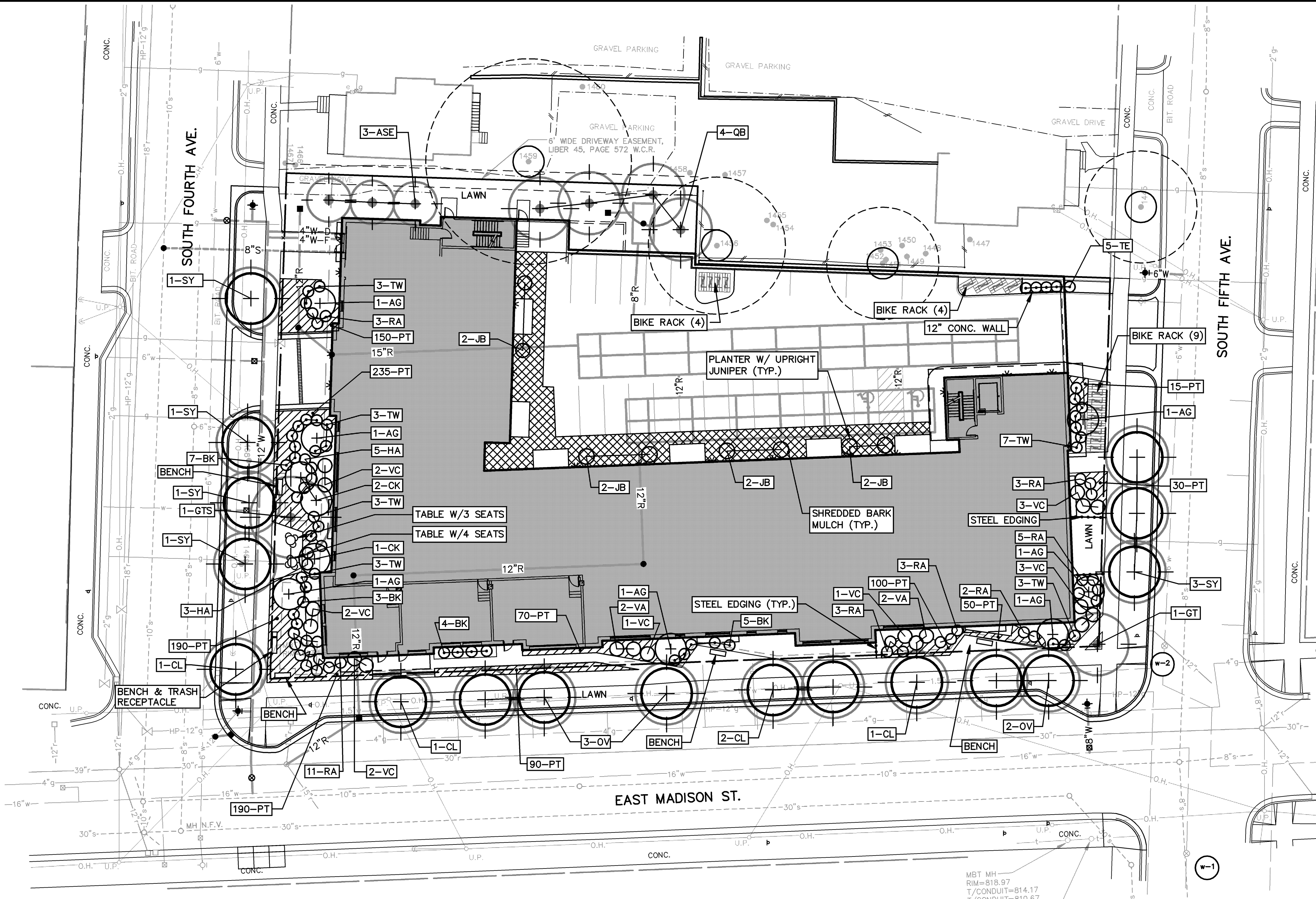
- 83B EXIST. CONTOUR
- +836.2 EXIST. SPOT ELEVATION
- U-P EXIST. UTILITY POLE
- G-P EXIST. GUY POLE
- EH ELEC. TRANSFORMER
- OH EXIST. OVERHEAD UTILITY LINE
- EX EXIST. LIGHT POLE
- TEL EXIST. TELEPHONE LINE
- E EXIST. ELECTRIC LINE
- G EXIST. GAS LINE
- W EXIST. WATER MAIN
- H EXIST. HYDRANT
- IB EXIST. GATE VALVE IN BOX
- EV EXIST. GATE VALVE IN WELL
- CS EXIST. CURB STOP & BOX
- BO EXIST. BLOW-OFF
- SS EXIST. STORM SEWER
- CB EXIST. CATCH BASIN OR INLET
- CO EXIST. CLEANOUT
- SS EXIST. SANITARY SEWER
- CD C/O DITCH OR EDGE OF WATER
- SIGN SIGN
- MAILBOX MAILBOX
- TELEPHONE RISER TELEPHONE RISER
- GAS METER GAS METER
- FENCE FENCE
- TREE OR BRUSH LIMIT TREE OR BRUSH LIMIT
- SINGLE TREE SINGLE TREE
- LANDMARK TREE LANDMARK TREE
- TREE CRITICAL ROOT ZONE TREE CRITICAL ROOT ZONE
- SECTION CORNER SECTION CORNER
- FOUND IRON PIPE FOUND IRON PIPE
- FOUND MONUMENT FOUND MONUMENT
- FOUND IRON ROD FOUND IRON ROD
- CONTROL PT. CONTROL PT.

**SITE AMENITIES**

- FREE-STANDING PLANTERS**  
ALLIED FIBERGLASS INDUSTRIES INC.  
(6) ST. CHARLES MODEL 1C-7233 (ROUND)  
(2) ST. CHARLES MODEL 1C-4833 (ROUND)  
FINISH - FEATHER LITE STONE  
COLOR BY ARCHITECT
- BENCHES**  
LANDSCAPE FORMS  
(5) PLEXUS, METAL GRID W/BACK, 120 INCH RADIUS, EXTRUDED ALUMINUM BOARDS  
COLOR BY ARCHITECT
- PICNIC TABLES**  
LANDSCAPE FORMS  
(1) CAROUSEL 36" ROUND  
STEELHEAD PERFORATED TOP, SURFACE MOUNT, THREE SEAT (BARRIER FREE)  
(1) CAROUSEL 36" ROUND  
STEELHEAD PERFORATED TOP, SURFACE MOUNT, FOUR SEAT  
COLOR BY ARCHITECT
- TRASH RECEPTACLE**  
LANDSCAPE FORMS  
PLEXUS, METAL GRID, 30 GALLON, SURFACE MOUNT, COLOR BY ARCHITECT
- BIKE RACKS**  
BIKE ARCH BA-2B, IN GROUND MOUNTING  
FINISH BLACK

**LANDSCAPE REQUIREMENTS:**

- PARKING LOT LANDSCAPING:**  
Not applicable. All parking in interior or rooftop parking.
- VEHICULAR USE LANDSCAPE BUFFER:**  
Not applicable.
- STREET TREE ESCROW:**  
Fifth Ave: street frontage = 118 ft x \$1.30/ft of street frontage = \$153.40  
Madison Street: street frontage = 266 ft x \$1.30/ft of frontage = \$345.80  
Fourth Ave: street frontage = 162 ft x \$1.30/ft of frontage = \$210.60; Two street trees are to be removed to allow the installation of a water main along Fourth Avenue. #1468 is a 10" red maple and is to be removed. #1469 is a 7" red maple. Mitigation for street tree canopy loss is required at the rate of inch per inch. There is 17" caliper loss and replacement of 17 trees at 2.5" each = 42.5"
- TREE MITIGATION**  
On-site Removals and Mitigation  
2 Landmark tree to be removed: #1424 is a 25" black walnut; #1444 is an 18" black walnut. These total 43 caliper inches removed.  
No Woodland trees are to be removed.  
Total Regulated Trees to be removed = 2/ 43 caliper inches.  
Mitigation = 50% replacement = 22"  
Proposed On-Site trees = 8 @ 2.5" + 1 @ 4" = 24"  
  
Off-site Removals and Mitigation  
None. Disturbance is proposed within the critical root zones of two landmark trees north of the site. Both of these trees are separated from the site by an existing retaining wall. #1456 is a 22" American elm that is approximately 5' above the existing and proposed grade of the proposed lower level parking area. #1451 is an 18" box elder (native, but a trash tree) that is approximately 7' above the existing and proposed grade of the proposed lower level parking area. Because the existing retaining wall is to remain in place, no impact on these trees is anticipated.



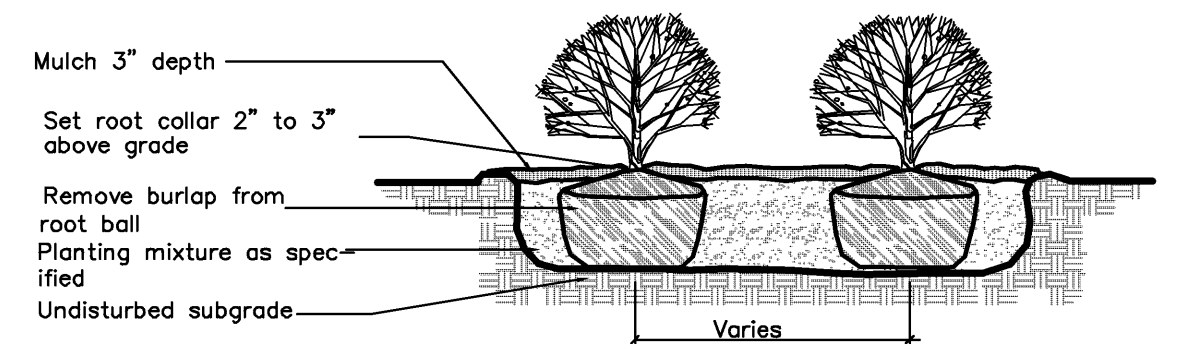
**PLANT MATERIAL SCHEDULE**

1	2	3	4	KEY	BOTANICAL NAME	COMMON NAME	SIZE	ROOT	COMMENT
<b>Trees</b>									
3	3			ASE	Acer saccharum "Endowment"	Endowment Sugar Maple	2-1/2" cal.	B&B	6' Branch hgt.
7		7		AG	Amelanchier x.g. Robin Hill	Robin Hill Serviceberry	8' hgt.	B&B	Clump form
3		3		CK	Cornus k. Chinensis	Chinese Dogwood	8' hgt.	B&B	Tree form
1	1			GT	Gleditsia t. Shademaster	Shademaster Honeylocust	2-1/2" cal.	B&B	6' Branch hgt.
1	1			GTS	Gleditsia t. Shademaster	Shademaster Honeylocust	4" cal.	B&B	Specimen
5			5	CL	Cladrastis Lutea	American Yellowwood	2-1/2" cal.	B&B	6' Branch hgt.
4	4			QB	Quercus bicolor	Swamp White Oak	2-1/2" cal.	B&B	6' Branch hgt.
5			5	OV	Ostrya Virginiana	American Hophornbeam	2-1/2" cal.	B&B	6' Branch hgt.
7			7	SY	Syringa Reticulata	Japanese Tree Lilac	2-1/2" cal.	B&B	6' Branch hgt.
<b>Shrubs &amp; Ground Covers</b>									
19	19			BK	Buxus koreana x "Winter Gem"	Winter Gem Boxwood	30-35" ht	B&B	
8	8			HA	Hydrangea arborescens "Annabelle"	Annabelle Hydrangea	24-30" ht	Cont.	
930	930			PT	Pachysandra terminalis	Japanese Spurge	1 gal	Cont.	12" O.C.
4	4			VA	Viburnum acerifolium	Mapleleaf Viburnum	30-35" ht	Cont.	
30	30			RA	Rhus aromatica	Fragrant Sumac	30" hgt	B&B	
22	22			TW	Taxus x media "Wardii"	Wards Yew	24-30" ht	B&B	
14	14			VC	Viburnum carlesii	Korean Spice Viburnum	30-35" ht	Cont.	
8	8			JB	Juniperus chinensis "Blue Point"	Blue Point Juniper	6-7 ht	B&B	
5	5			TE	Thuja o. "Emerald"	Emerald Arborvitae	6-7 ht	B&B	

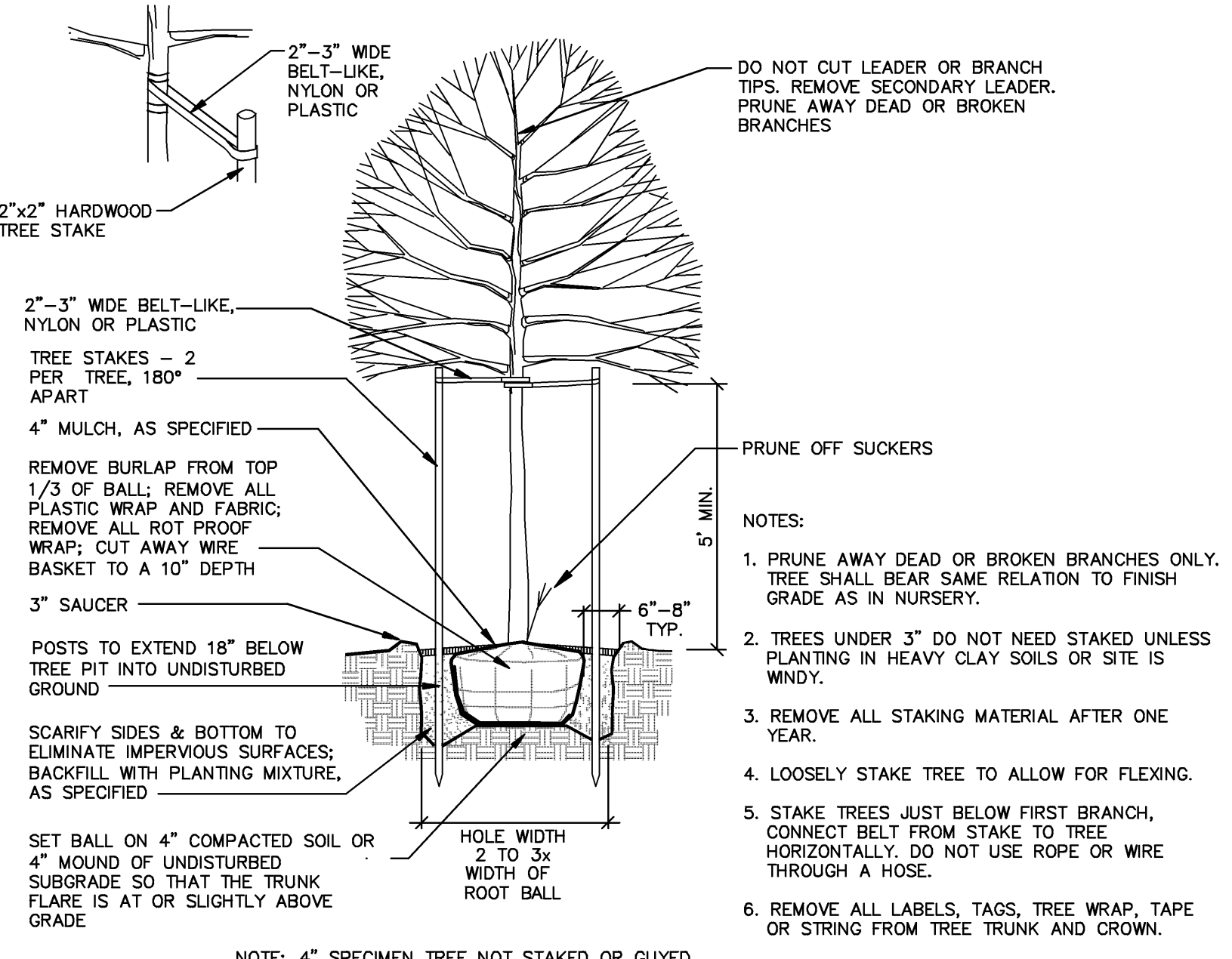
- Total item quantity
- On-site landmark tree mitigation
- General site landscaping
- Street trees

**LANDSCAPE NOTES**

- Water outlets will be provided within 150 feet of all required plantings.
  - Plant materials shall be selected and installed in accordance with standards established by the City Parks and Recreation Department.
  - All parking islands and green panels will be planted with shrubs or permanent ground cover.
  - Landscape maintenance plan: All diseased, damaged or dead material shown as proposed plantings on the site plan shall be replaced by the end of the following growing season.
  - Restore remaining areas with minimum four (4) inches topsoil then seed/fertilizer/mulch. Fertilizer for lawns shall provide not less than one (1) pound of actual nitrogen per 1000 sq ft of lawn area and shall contain not less than two percent (2%) potassium and four percent (4%) phosphoric acid. Seed shall be Special Park Mixture "Northrup King" (or approved equal), as follows:  
30% Rugby Kentucky Bluegrass  
20% Park Kentucky Bluegrass  
20% Ruby Creeping Red Fescue  
10% Pennine Perennial Ryegrass  
20% Scalds Hard Fescue
- Apply at a rate of four pounds (4 lbs) per 1000 sq ft. Mulch within 24 hours with two (2) tons of straw per acre, or 71 bales excelsior mulch per acre. Anchor straw mulch with spray coating of adhesive material applied at the rate of 150 gallons per acre. Any fertilizer application following the initial topsoil and seeding shall be fertilizer without phosphorus.



**SHRUB BED PLANTING DETAIL**  
NOT TO SCALE



**DECIDUOUS STREET TREE PLANTING DETAIL**  
2-1/2" CAL. OR SMALLER

JOB No.	08013
DATE	12-23-08
SHEET	C7 OF
REV. DATE	
3-04-09	ADD: JCA/WJU
9-22-09	ENG: JCA
12-11-08	ENG: SWB
2-23-10	SITE: 08013.P1
	PPF



R:\08013\CAD\SITE\08013.P1.dwg, CT, 2/22/2010 11:36:12 AM, JCA, D:\Size-KP.dwg