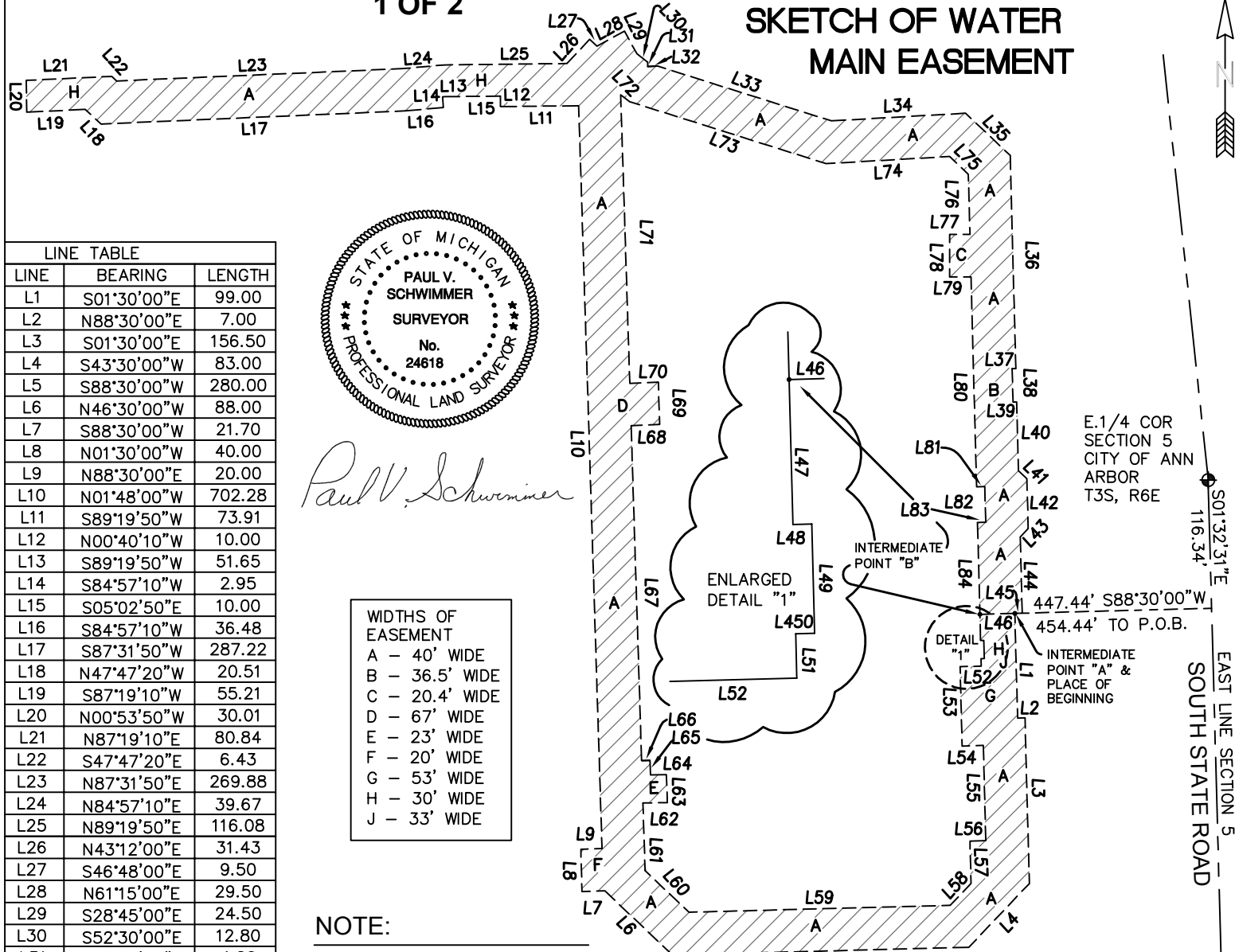


**EXHIBIT B
1 OF 2**

**SKETCH OF WATER
MAIN EASEMENT**



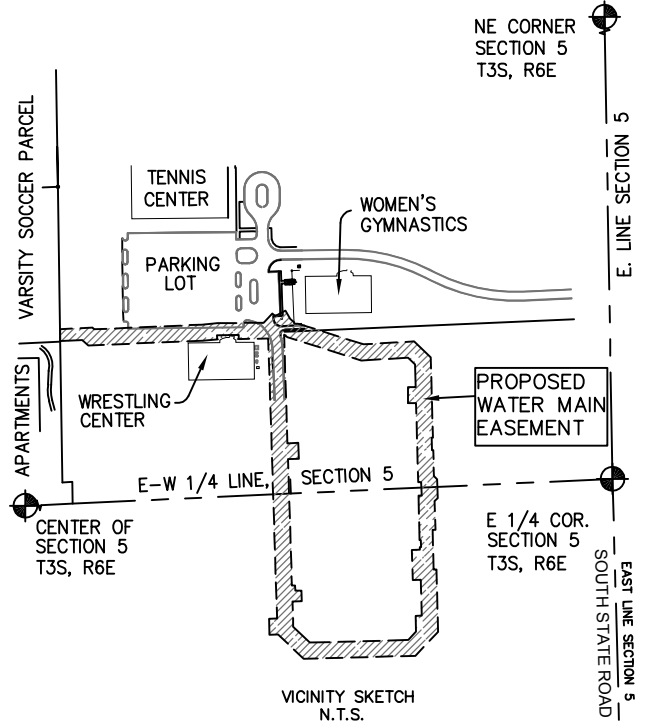
Paul V. Schwimmer

WIDTHS OF EASEMENT	
A	40' WIDE
B	36.5' WIDE
C	20.4' WIDE
D	67' WIDE
E	23' WIDE
F	20' WIDE
G	53' WIDE
H	30' WIDE
J	33' WIDE

LINE TABLE		
LINE	BEARING	LENGTH
L1	S01°30'00"E	99.00
L2	N88°30'00"E	7.00
L3	S01°30'00"E	156.50
L4	S43°30'00"W	83.00
L5	S88°30'00"W	280.00
L6	N46°30'00"W	88.00
L7	S88°30'00"W	21.70
L8	N01°30'00"W	40.00
L9	N88°30'00"E	20.00
L10	N01°48'00"W	702.28
L11	S89°19'50"W	73.91
L12	N00°40'10"W	10.00
L13	S89°19'50"W	51.65
L14	S84°57'10"W	2.95
L15	S05°02'50"E	10.00
L16	S84°57'10"W	36.48
L17	S87°31'50"W	287.22
L18	N47°47'20"W	20.51
L19	S87°19'10"W	55.21
L20	N00°53'50"W	30.01
L21	N87°19'10"E	80.84
L22	S47°47'20"E	6.43
L23	N87°31'50"E	269.88
L24	N84°57'10"E	39.67
L25	N89°19'50"E	116.08
L26	N43°12'00"E	31.43
L27	S46°48'00"E	9.50
L28	N61°15'00"E	29.50
L29	S28°45'00"E	24.50
L30	S52°30'00"E	12.80
L31	S02°30'00"E	4.20
L32	N87°30'00"E	9.30
L33	S72°30'00"E	172.00
L34	N86°45'00"E	127.00
L35	S46°35'06"E	58.12
L36	S01°30'00"E	201.35
L37	S88°30'00"W	3.50
L38	S01°30'00"E	31.50
L39	N88°30'00"E	3.50
L40	S01°30'00"E	65.00
L41	S46°30'00"E	10.98
L42	S01°30'00"E	47.20
L43	S43°30'00"W	10.98
L44	S01°30'00"E	72.00
L45	S88°30'00"W	7.00
L46	S88°30'00"W	33.00
L47	S01°30'00"E	24.73
L48	N88°30'00"E	3.00
L49	S01°30'00"E	17.20
L50	S88°30'00"W	3.00
L51	S01°30'00"E	7.00
L52	S88°30'00"W	20.00
L53	S01°30'00"E	75.00
L54	N88°30'00"E	20.00
L55	S01°30'00"E	90.00
L56	S88°30'00"W	15.00
L57	S01°30'00"E	40.00
L58	S43°30'00"W	28.65
L59	S88°30'00"W	246.86
L60	N46°30'00"W	57.10

NOTE:
BEARINGS BASED ON MICHIGAN STATE PLANE COORDINATES, SOUTH ZONE, NAD '83

LINE TABLE (CON'T)		
L61	N01°48'00"W	64.04
L62	N89°30'00"E	23.00
L63	N01°48'00"W	26.50
L64	S89°30'00"W	15.00
L65	N01°48'00"W	13.50
L66	S89°30'00"W	8.00
L67	N01°48'00"W	316.50
L68	N87°30'00"E	27.00
L69	N01°48'00"W	40.00
L70	S87°30'00"W	27.00
L71	N01°48'00"W	272.82
L72	S52°30'00"E	10.66
L73	S72°30'00"E	194.45
L74	N86°45'00"E	117.07
L75	S46°35'06"E	24.26
L76	S01°30'00"E	57.00
L77	N90°00'00"W	19.28
L78	S00°00'00"W	40.00
L79	S90°00'00"E	20.33
L80	S01°30'00"E	198.50
L81	N88°30'00"E	7.76
L82	S01°30'00"E	33.70
L83	S88°30'00"W	7.76
L84	S01°30'00"E	86.77



CLIENT: UNIVERSITY OF MICHIGAN

WATER MAIN EASEMENT

OF A PARCEL OF LAND IN THE EAST 1/2 OF SECTION 5, T3S, R6E CITY OF ANN ARBOR, WASHTENAW COUNTY, STATE OF MICHIGAN.

LEGEND:

- ⊙ SECTION CORNER
- ⊙ FIP FOUND IRON PIPE
- ⊙ FIR FOUND IRON ROD
- ⊙ FMN FOUND MAG NAIL
- ⊙ FCM FOUND MONUMENT
- ⊙ S SET IRON PIPE
- ⊙ SET WOOD LATH
- (R) RECORDED
- (C) CALCULATED

Arbor Land Consultants, Inc.
Professional Land Surveyors

2936 S. Madrono
Ann Arbor, MI 48103
(734) 669-2960
Fax 669-2961
www.arborlandinc.com

ARBOR LAND CONSULTANTS

JOB NO.: 09516	DATE: 8-29-2016
SEE JOB 05213	REVISED: 8-31-2016
SHEET 1 OF 2	BY: PVS

SCALE: 1" = N.T.S.

**EXHIBIT B
2 OF 2**

Legal Description of a Proposed Variable Width Water Main Easement in the East 1/2 of Section 5, T3S, R6E, City of Ann Arbor, Washtenaw County, State of Michigan


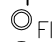




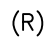
Commencing at the East 1/4 Corner of Section 5, Township 3 South, Range 6 East, City of Ann Arbor (formerly part of Pittsfield Township), Washtenaw County, State of Michigan; thence S01°32'31"E 116.34 feet along the east line of said Section 5; thence S88°30'00"W 454.44 feet for a PLACE OF BEGINNING, and also being Point "A" of an intermediate traverse line; thence S01°30'00"E 99.00 feet; thence N88°30'00"E 7.00 feet; thence S01°30'00"E 156.50 feet; thence S43°30'00"W 83.00 feet; thence S88°30'00"W 280.00 feet; thence N46°30'00"W 88.00 feet; thence S88°30'00"W 21.70 feet; thence N01°30'00"W 40.00 feet; thence N88°30'00"E 20.00 feet; thence N01°48'00"W 702.28 feet; thence S89°19'50"W 73.91 feet; thence N00°40'10"W 10.00 feet; thence S89°19'50"W 51.65 feet; thence S84°57'10"W 2.95 feet; thence S05°02'50"E 10.00 feet; thence S84°57'10"W 36.48 feet; thence S87°31'50"W 287.22 feet; thence N47°47'20"W 20.51 feet thence S87°19'10"W 55.21 feet; thence N00°53'50"W 30.01 feet; thence N87°19'10"E 80.84 feet; thence S47°47'20"E 6.43 feet; thence N87°31'50"E 269.88 feet; thence N84°57'10"E 39.67 feet; thence N89°19'50"E 116.08 feet; thence N43°12'00"E 31.43 feet; thence S46°48'00"E 9.50 feet; thence N61°15'00"E 29.50 feet; thence S28°45'00"E 24.50 feet; thence S52°30'00"E 12.80 feet; thence S02°30'00"E 4.20 feet; thence N87°30'00"E 9.30 feet; thence S72°30'00"E 172.00 feet; thence N86°45'00"E 127.00 feet; thence S46°35'06"E 58.12 feet; thence S01°30'00"E 201.35 feet; thence S88°30'00"W 3.50 feet; thence S01°30'00"E 31.50 feet; thence N88°30'00"E 3.50 feet; thence S01°30'00"E 65.00 feet; thence S46°30'00"E 10.98 feet; thence S01°30'00"E 47.20 feet; thence S43°30'00"W 10.98 feet; thence S01°30'00"E 72.00 feet; thence S88°30'00"W 7.00 feet to said intermediate traverse Point "A"; thence continuing S88°30'00"W 33.00 feet along an intermediate traverse line to Point "B"; thence S01°30'00"E 24.73 feet; thence N88°30'00"E 3.00 feet; thence S01°30'00"E 17.20 feet; thence S88°30'00"W 3.00 feet; thence S01°30'00"E 7.00 feet; thence S88°30'00"W 20.00 feet; thence S01°30'00"E 75.00 feet; thence N88°30'00"E 20.00 feet; thence S01°30'00"E 90.00 feet; thence S88°30'00"W 15.00 feet; thence S01°30'00"E 40.00 feet; thence S43°30'00"W 28.65 feet; thence S88°30'00"W 246.86 feet; thence N46°30'00"W 57.10 feet; thence N01°48'00"W 64.04 feet; thence N89°30'00"E 23.00 feet; thence N01°48'00"W 26.50 feet; thence S89°30'00"W 15.00 feet; thence N01°48'00"W 13.50 feet; thence S89°30'00"W 8.00 feet; thence N01°48'00"W 316.50 feet; thence N87°30'00"E 27.00 feet; thence N01°48'00"W 40.00 feet; thence S87°30'00"W 27.00 feet; thence N01°48'00"W 272.82 feet; thence S52°30'00"E 10.66 feet; thence S72°30'00"E 194.45 feet; thence N86°45'00"E 117.07 feet; thence S46°35'06"E 24.26 feet; thence S01°30'00"E 57.00 feet; thence N90°00'00"W 19.28 feet; thence S00°00'00"W 40.00 feet; thence S90°00'00"E 20.33 feet; thence S01°30'00"E 198.50 feet; thence N88°30'00"E 7.76 feet; thence S01°30'00"E 33.70 feet; thence S88°30'00"W 7.76 feet; thence S01°30'00"E 86.77 feet to said intermediate Point "B"; thence N88°30'00"E 33.00 feet along said intermediated traverse line to said Point "A" and the Place of Ending.

CLIENT: UNIVERSITY OF MICHIGAN

**WATER MAIN
EASEMENT**

OF A PARCEL OF LAND
IN THE EAST 1/2 OF
SECTION 5, T3S, R6E
CITY OF ANN ARBOR,
WASHTENAW COUNTY,
STATE OF MICHIGAN.

LEGEND:

-  SECTION CORNER
-  FOUND IRON PIPE
-  FOUND IRON ROD
-  FOUND MAG NAIL
-  FOUND MONUMENT
-  SET IRON PIPE
-  SET WOOD LATH
- (R) RECORDED
- (c) CALCULATED

**Arbor Land
Consultants, Inc.
Professional Land
Surveyors**

2936 S. Madrono
Ann Arbor, MI 48103
(734) 669-2960
Fax 669-2961

www.arborlandinc.com



SCALE: 1" = 100'



JOB NO.: 09516	DATE: 8-29-2016
SEE JOB 05213	REVISED: 8-31-2016
SHEET 2 OF 2	BY: PVS