

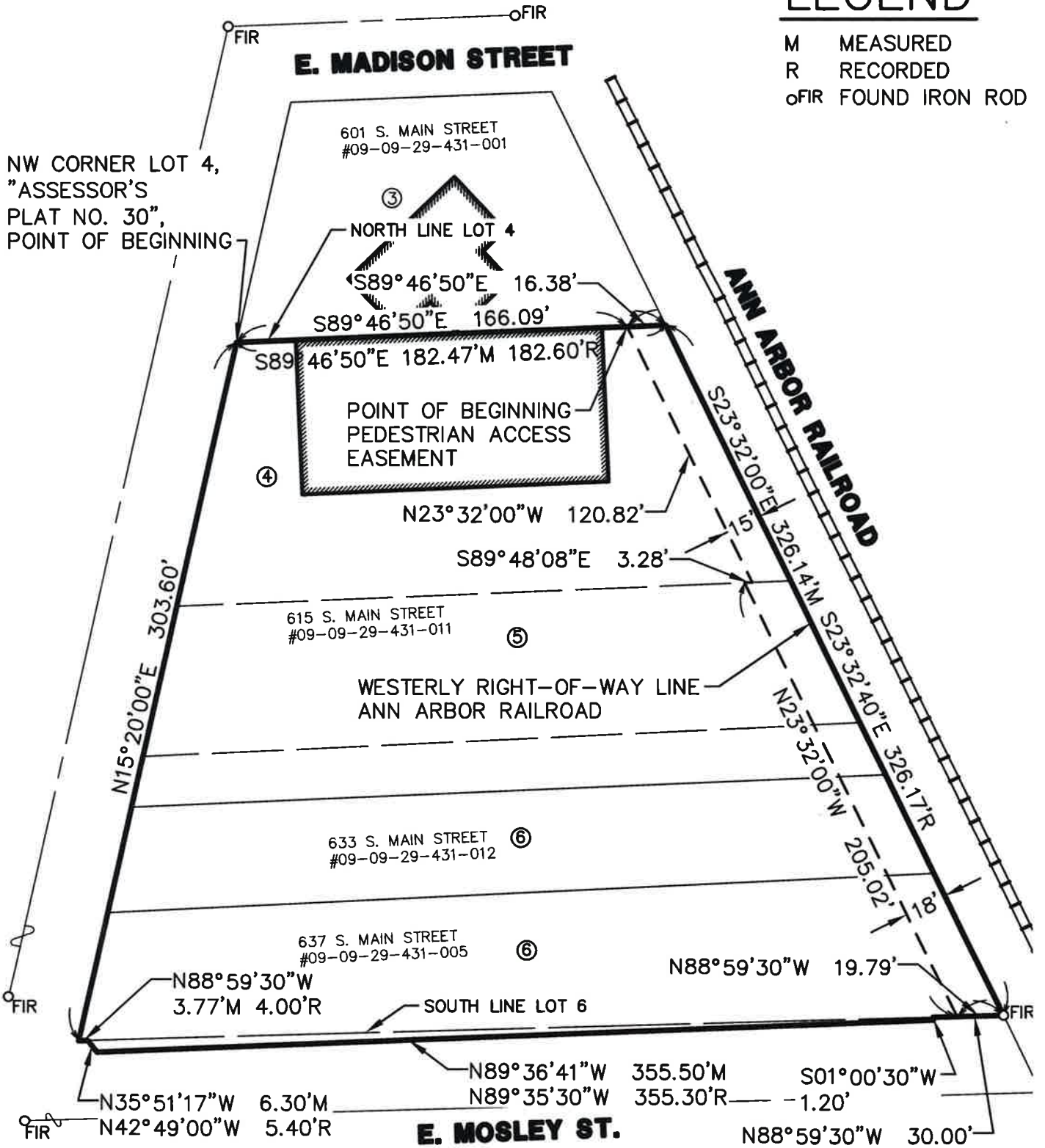
EXHIBIT A

SURVEY OF A VARIABLE WIDTH PEDESTRIAN ACCESS EASEMENT
 LOCATED IN LOTS 4, 5 & 6, ASSESSOR'S PLAT NO. 30
 CITY OF ANN ARBOR, WASHTENAW COUNTY, MICHIGAN



LEGEND

M MEASURED
 R RECORDED
 oFIR FOUND IRON ROD



CLIENT: CCSHP Ann Arbor I, LLC	DATE: 9/21/16	
JOB NO.: 15200	SHEET 1 OF 2	
SECTION: 29 TWN: 2S. RANGE: 6E.	SCALE: 1in. = 60 ft.	
CITY OF ANN ARBOR	BOOK: 449	
WASHTENAW COUNTY, MICHIGAN	BY: KMW	
<p>M I D W E S T E R N C O N S U L T I N G</p> <p>3815 Plaza Drive Ann Arbor, Michigan 48108 (734) 995-0200 • www.midwesternconsulting.com</p> <p>Land Development • Land Survey • Institutional • Municipal Wireless Communications • Transportation • Landfill Services</p>		