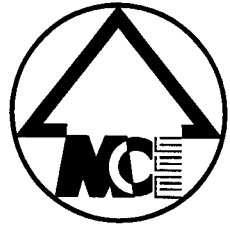


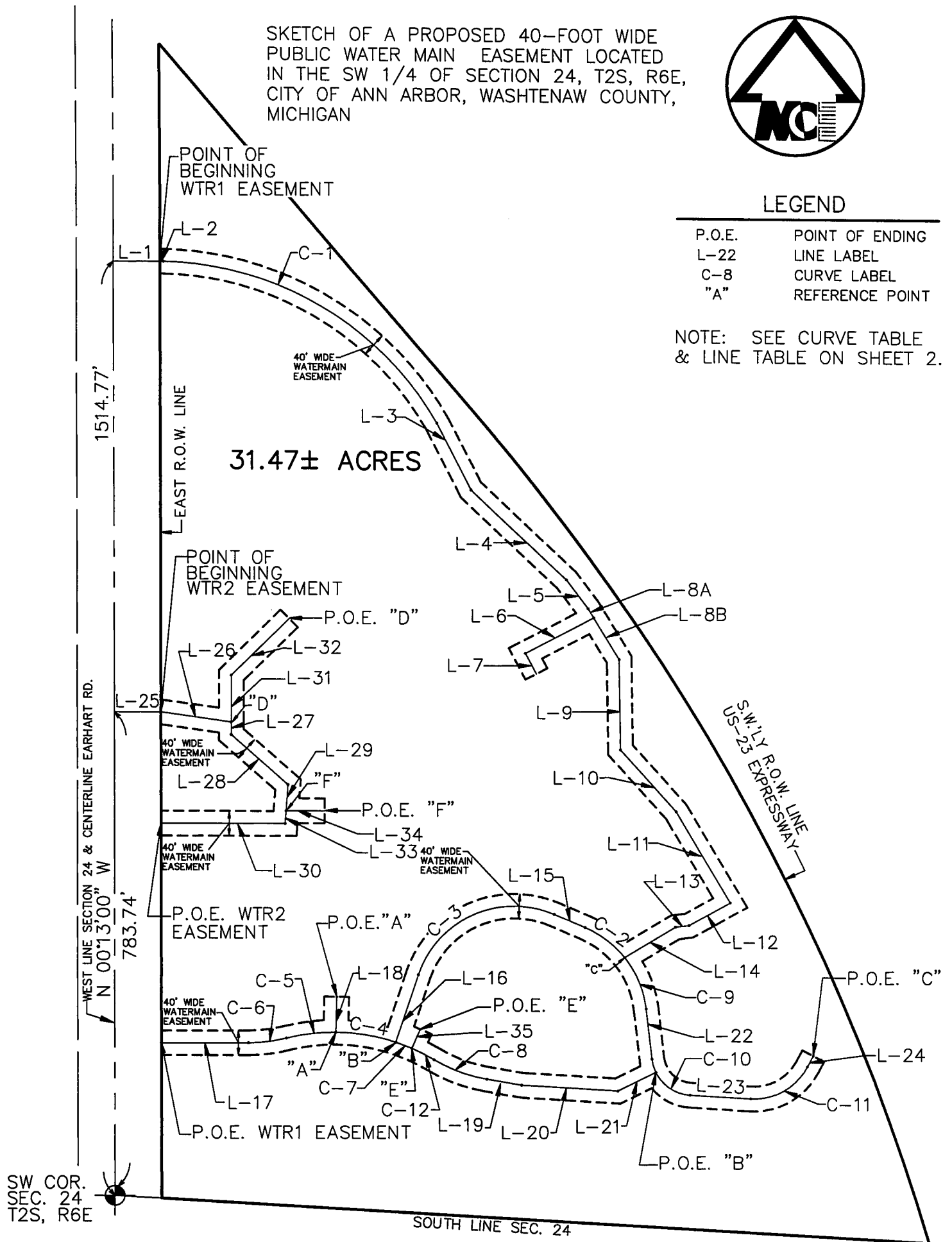
SKETCH OF A PROPOSED 40-FOOT WIDE PUBLIC WATER MAIN EASEMENT LOCATED IN THE SW 1/4 OF SECTION 24, T2S, R6E, CITY OF ANN ARBOR, WASHTENAW COUNTY, MICHIGAN



LEGEND

P.O.E.	POINT OF ENDING
L-22	LINE LABEL
C-8	CURVE LABEL
"A"	REFERENCE POINT

NOTE: SEE CURVE TABLE & LINE TABLE ON SHEET 2.



REV: 11/29/10

09215_esmt-wt3.dwg



CLIENT: GLACIER HILLS	DATE: 10/08/10	
JOB NO.: 09215	SHEET 1 OF 5	
SECTION: 24 TWN: 2S. RANGE: 6E.	SCALE: 1in.= 200 ft.	
CITY OF ANN ARBOR	BOOK: #	
WASHTENAW COUNTY, MICHIGAN	BY: KMW	
<p>MIDWESTERN CONSULTING</p> <p>Civil, Environmental and Transportation Engineers Planners, Surveyors Landscape Architects</p> <p>3815 Plaza Drive Ann Arbor, Michigan 48108 Phone: 734.995.0200 Fax 734.995.0599</p>		

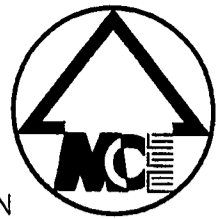
CURVE TABLE					
CURVE	LENGTH	RADIUS	CHORD		DELTA
C-1	537.06'	518.08'	S59°36'44"E	513.33'	59°23'40"
C-2	81.18'	164.00'	N52°54'03"W	80.35'	28°21'40"
C-3	270.79'	164.00'	S65°36'56"W	241.06'	94°36'21"
C-4	98.63'	314.11'	N80°46'53"W	98.23'	17°59'29"
C-5	80.82'	314.11'	S82°51'05"W	80.60'	14°44'35"
C-6	62.34'	250.00'	S82°37'25"W	62.18'	14°17'15"
C-7	27.95'	314.11'	S69°14'13"E	27.94'	05°05'51"
C-8	91.82'	250.00'	S69°55'45"E	91.31'	21°02'38"
C-9	91.75'	164.00'	S22°41'37"E	90.56'	32°03'11"
C-10	92.36'	66.00'	S46°45'23"E	85.01'	80°10'44"
C-11	111.93'	98.00'	N60°25'59"E	105.95'	65°26'31"
C-12	39.92'	314.11'	S63°02'52"E	39.89'	07°16'52"

LINE TABLE		
LINE	BEARING	LENGTH
L-1	N89°47'00"E	75.41'
L-2	S89°18'35"E	5.73'
L-3	S27°24'25"E	120.62'
L-4	S47°04'46"E	210.84'
L-5	S37°17'59"E	58.59'
L-6	S62°00'45"W	125.22'
L-7	S27°59'15"E	38.05'
L-8A	S31°24'43"E	17.81'
L-8B	S31°24'43"E	79.29'
L-9	S00°58'16"E	147.52'
L-10	S42°25'54"E	134.13'
L-11	S30°44'08"E	172.19'
L-12	S60°43'44"W	76.47'
L-13	S83°09'54"W	22.08'
L-14	S58°44'07"W	96.44'
L-15	N67°04'53"W	54.54'
L-16	S18°18'46"W	116.13'
L-17	S89°46'03"W	140.75'
L-18	N01°19'05"E	57.94'
L-19	S80°27'03"E	57.32'
L-20	S86°50'45"E	156.16'
L-21	N63°35'48"E	68.56'
L-22	S06°40'01"E	82.32'
L-23	S86°50'45"E	98.45'
L-24	N27°42'44"E	20.00'
L-25	N89°47'00"E	75.41'
L-26	S82°14'05"E	115.02'
L-27	S00°00'00"E	20.50'
L-28	S48°59'27"E	121.92'
L-29	S04°08'56"W	42.07'
L-30	S89°51'02"W	200.75'
L-31	N00°00'00"E	76.38'
L-32	N45°00'00"E	131.97'
L-33	S04°08'56"W	20.71'
L-34	N90°00'00"E	62.52'
L-35	N23°18'43"E	34.00'

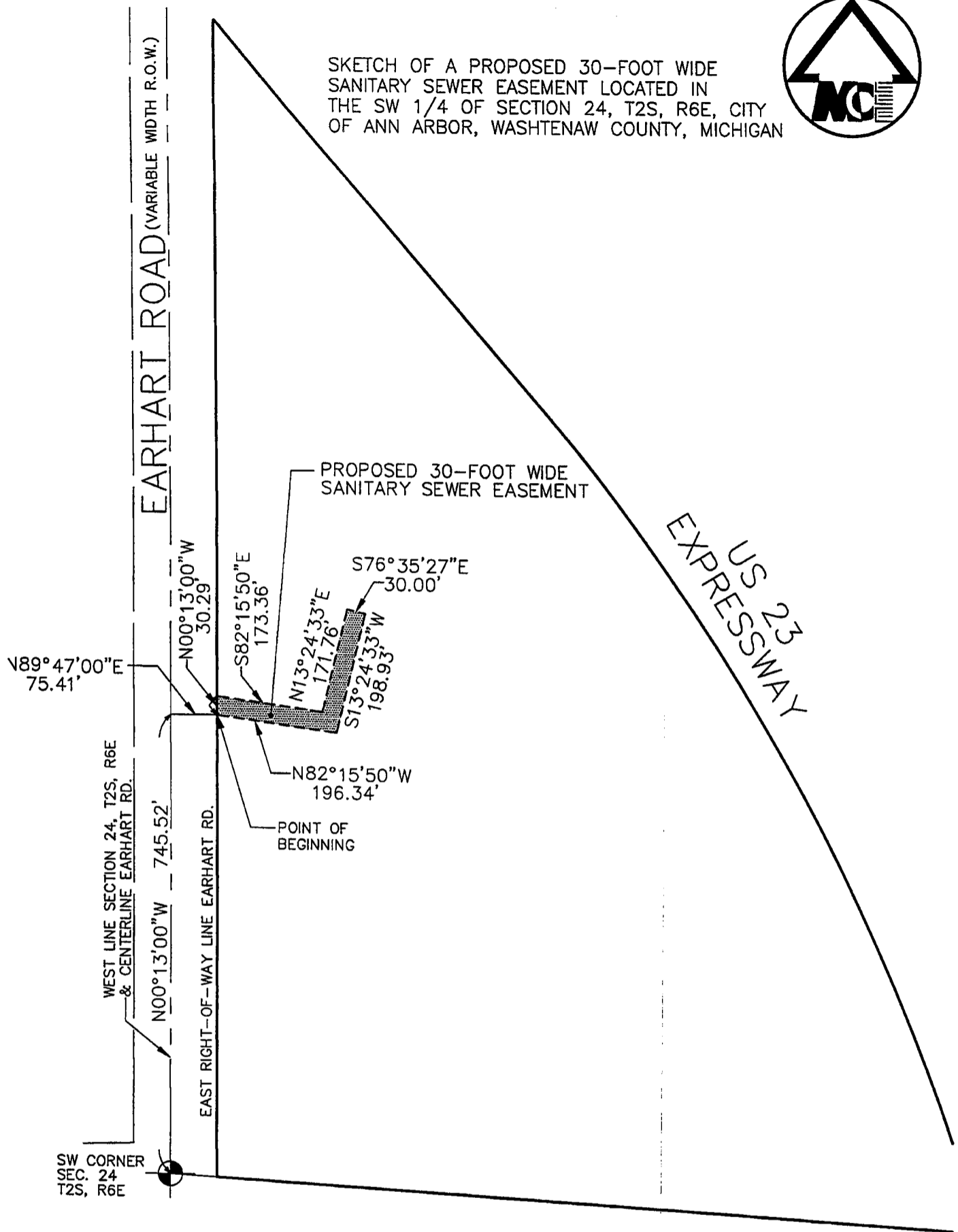
REV: 11/29/10

09215_esmt-wt3.dwg

CLIENT: GLACIER HILLS	DATE: 10/08/10	
JOB NO.: 09215	SHEET 2 OF 5	
SECTION: 24 TWN: 2S. RANGE: 6E.	SCALE: 1in.=  ft.	
CITY OF ANN ARBOR	BOOK: #	
WASHTENAW COUNTY, MICHIGAN	BY: KMW	
MIDWESTERN CONSULTING 		
Civil, Environmental and Transportation Engineers Planners, Surveyors Landscape Architects		3815 Plaza Drive Ann Arbor, Michigan 48108 Phone: 734.995.0200 Fax 734.995.0599



SKETCH OF A PROPOSED 30-FOOT WIDE
SANITARY SEWER EASEMENT LOCATED IN
THE SW 1/4 OF SECTION 24, T2S, R6E, CITY
OF ANN ARBOR, WASHTENAW COUNTY, MICHIGAN



09215_SAN-ESMT.DWG

CLIENT: GLACIER HILLS	DATE: 10/08/10	
JOB NO.: 09215	SHEET 1 OF 2	
SECTION: 24 TWN: 2S. RANGE: 6E.	SCALE: 1in. = 200 ft.	
CITY OF ANN ARBOR	BOOK:	
WASHTENAW COUNTY, MICHIGAN	BY: KMW	
MIDWESTERN CONSULTING 		
Civil, Environmental and Transportation Engineers Planners, Surveyors Landscape Architects 3815 Plaza Drive Ann Arbor, Michigan 48108 Phone: 734.995.0200 Fax 734.995.0599		