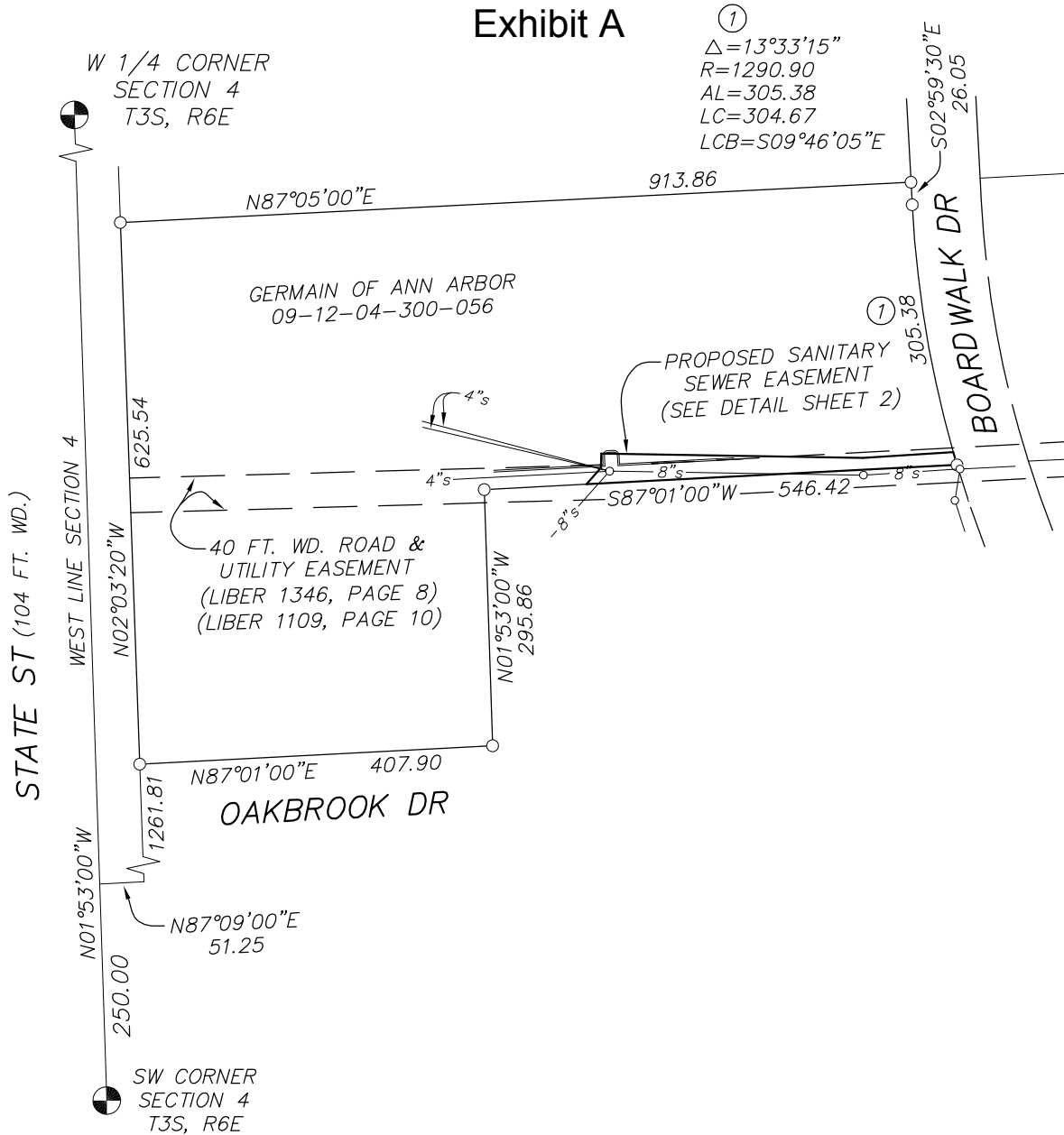


Exhibit A



①
 $\Delta = 13^{\circ}33'15''$
 $R = 1290.90$
 $AL = 305.38$
 $LC = 304.67$
 $LCB = S09^{\circ}46'05''E$

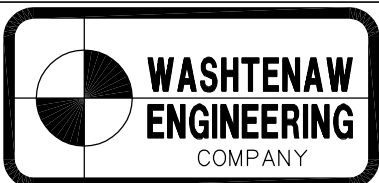
SANITARY SEWER EASEMENT

Commencing at the Southwest corner of Section 4, T3S, R6E, City of Ann Arbor, Washtenaw County, Michigan; thence N01°53'00"W 250.00 feet along the West line of said Section; thence N87°09'00"E 51.25 feet to a point on the East line of State Street; thence along said East line N02°03'20"W 1261.81 feet; thence N87°01'00"E 407.90 feet; thence N01°53'00"W 295.86 feet; thence N87°01'00"E 118.10 feet to the POINT OF BEGINNING; thence N41°40'48"E 25.40 feet; thence N00°55'05"E 16.40 feet; thence S89°04'55"E 302.15 feet; thence N86°23'11"E 104.38 feet; thence Southerly along the Westerly right-of-way line of Boardwalk Drive 15.43 feet along the arc of a 1290.90 foot radius nontangential circular curve to the left, through a central angle of 00°41'05", having a chord that bears S16°12'10"E 15.43 feet; thence S87°01'00"W 428.32 feet to the Point of Beginning. Being a part of the Southwest 1/4 of Section 4, T3S, R6E, City of Ann Arbor, Washtenaw County, Michigan and containing 9,004 square feet of land, more or less. Being subject to easements and restrictions of record, if any.

SCALE: 1 INCH = 200 FEET

LEGEND

PROFESSIONAL SURVEYOR NO. 24620



WASHTENAW ENGINEERING COMPANY
 CIVIL ENGINEERS * PLANNERS
 SURVEYORS * LANDSCAPE ARCHITECTS
 3526 W. LIBERTY RD, SUITE 400
 ANN ARBOR, MICHIGAN 48103
 TEL. 734-761-8800 FAX. 734-761-9530
 weco@wengco.com
 www.washtenawengineering.com

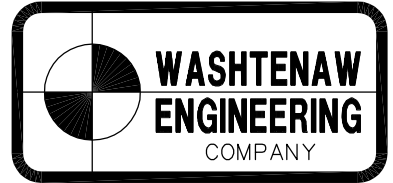
CLIENT: CITY OF ANN ARBOR
 SECTION 4
 TOWN 3 SOUTH * RANGE 6 EAST
 CITY OF ANN ARBOR
 WASHTENAW COUNTY * MICHIGAN

DATE 12-6-13	REV. 8-12-14, 9-3-14
DRAWN DJH	JOB 31667
CHECK TLS	F.B. 649
SHEET 1 OF 2	FILE NO. R-10047

Exhibit A

BOARDWALK DR
(80 FT. WD.)

$\Delta = 00^\circ 41' 05''$
 $R = 1290.90$
 $AL = 15.43$
 $LC = 15.43$
 $LCB = S16^\circ 12' 10'' E$



CIVIL ENGINEERS * PLANNERS
 SURVEYORS * LANDSCAPE ARCHITECTS
 3526 W. LIBERTY RD, SUITE 400
 ANN ARBOR, MICHIGAN 48103
 TEL. 734-761-8800 FAX. 734-761-9530
 weco@wengco.com
 www.washtenawengineering.com

SCALE: 1" = 40'

PROPOSED SANITARY
SEWER EASEMENT
9,004 SQFT±

N'LY LINE EXISTING EASEMENT

302.15

428.32

546.42

S89°04'55"E

EX. CURB

20.0'

S87°01'00"W

40 FT. WD. ROAD & UTILITY EASEMENT
(LIBER 1346, PAGE 8) (LIBER 1109, PAGE 10)

PROFESSIONAL SURVEYOR NO. 24620

CLIENT: CITY OF ANN ARBOR	
SECTION <u>4</u>	
TOWN <u>3</u> SOUTH * RANGE <u>6</u> EAST	
CITY OF ANN ARBOR	
WASHTENAW COUNTY * MICHIGAN	
DATE 12-6-13	REV. 8-12-14, 9-3-14
DRAWN DJH	JOB 31667
CHECK TLS	F.B. 649
SHEET 2 OF 2	FILE NO. R-10047

GERMAIN OF ANN ARBOR
09-12-04-300-056

SANITARY MH (TYP)

N00°55'05"E
16.40

N41°40'48"E
25.40

POINT OF
BEGINNING

118.10

N01°53'00"W
295.86

DETAIL
(SCALE: 1" = 40')