

50'-7' PARALLEL LOT ROW IMPACTS

2.0	CHANGED (DECREASE)	0.21 ACRE
2.0	CHANGED (INCREASE)	0.00 ACRE
2.0	NET REQUIRED (NOT INCLUDING PERMANENT EASEMENTS)	0.21 ACRE
2.0	IN USABLE LAND FOR U/L	0.00 ACRE
2.0	IN USABLE LAND FOR U/L	0.00 ACRE
2.0	POST-PROJECT DECREASE IN USABLE LAND FOR U/L	0.00 ACRE

FIELD CHECKED ROW IMPACTS

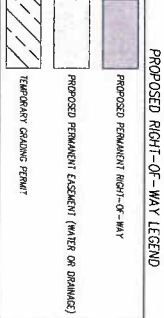
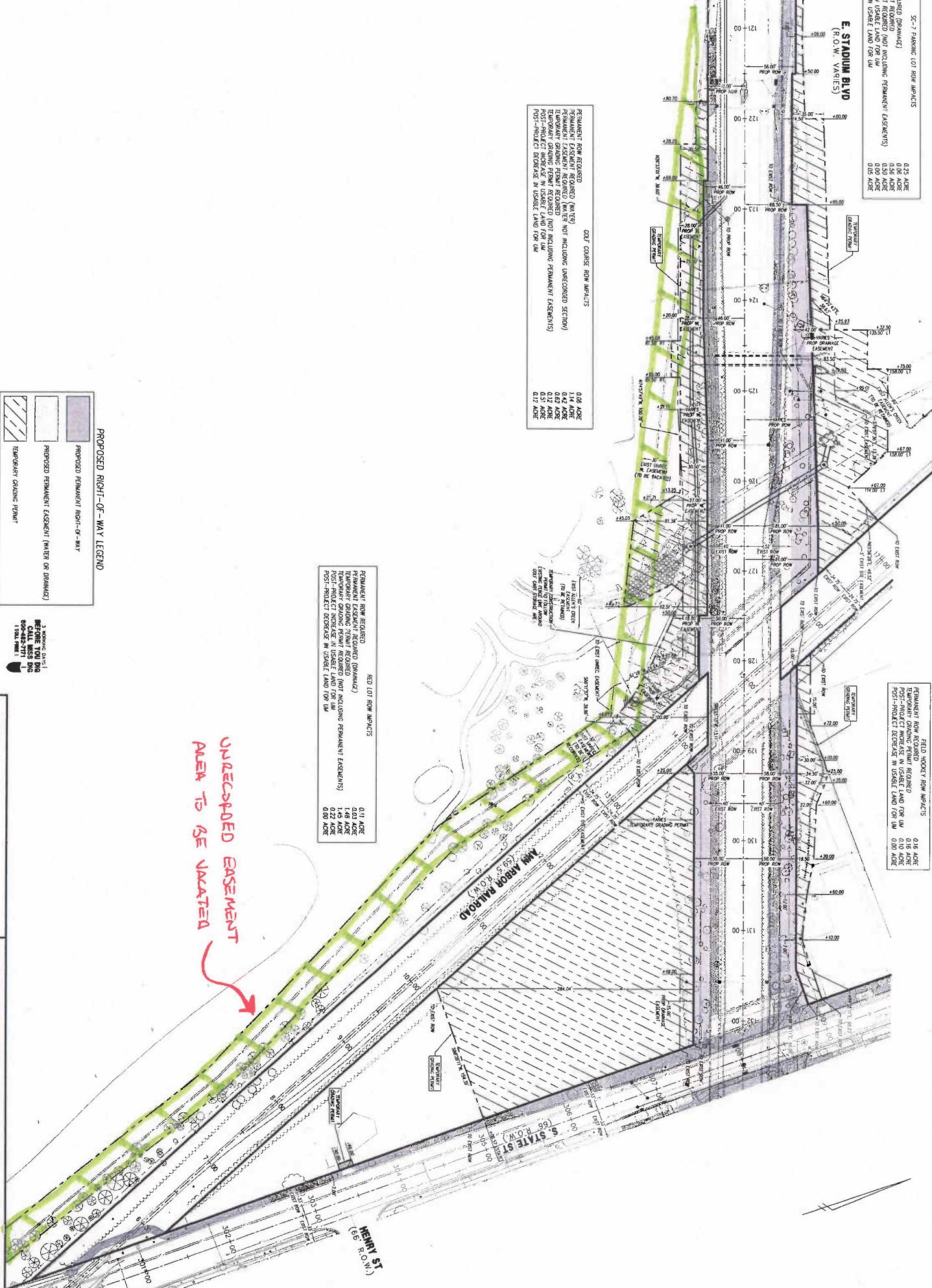
0.18 ACRE	PERMANENT ROW REQUIRED
0.18 ACRE	TEMPORARY EASEMENT REQUIRED
0.18 ACRE	PERMANENT EASEMENT REQUIRED (NOT INCLUDING PERMANENT EASEMENTS)
0.00 ACRE	IN USABLE LAND FOR U/L
0.00 ACRE	POST-PROJECT DECREASE IN USABLE LAND FOR U/L

**E. STADIUM BLVD
(R.O.W. VARIES)**

PERMANENT ROW REQUIRED
 PERMANENT EASEMENT REQUIRED (WATER NOT INCLUDING UNRECORDED SECTIONS)
 TEMPORARY EASEMENT REQUIRED (WATER NOT INCLUDING PERMANENT EASEMENTS)
 POST-PROJECT INCREASE IN USABLE LAND FOR U/L
 POST-PROJECT DECREASE IN USABLE LAND FOR U/L

PERMANENT ROW REQUIRED
 ACID LOT ROW IMPACTS
 PERMANENT EASEMENT REQUIRED (DECREASE)
 TEMPORARY EASEMENT REQUIRED
 POST-PROJECT INCREASE IN USABLE LAND FOR U/L
 POST-PROJECT DECREASE IN USABLE LAND FOR U/L

**UNRECORDED EASEMENT
AREA TO BE VACATED**



NCI NORTHWEST CONSULTANTS, INC.

PROJECT MANAGEMENT - PUBLIC SERVICES - CITY OF ANN ARBOR

E. STADIUM BLVD BRIDGES REPLACEMENT PROJECT

2006-045-EXHIBIT

UM RIGHTS-OF-WAY IMPACTS

SCALE: 1" = 100'

DRAWING NO. 2006-045-EXHIBIT

SHEET NO. 1 OF 1

APPROVED BY: _____

REVISION	DATE	BY	CHK

3. APPROVED DATE: 05/11/11
 BEFORE YOU SIGN: 000-448-7111
 1. TOTAL SHEET: 1

FROM: SANITARY SEWER & WASTEWATER
 FROM: CONCRETE, CURB & GUTTER
 FROM: ROADWAY CONCRETE PAVEMENT
 FROM: ROADWAY GRANULAR PAVEMENT
 FROM: ROADWAY GRANULAR PAVEMENT

TO: SANITARY SEWER & WASTEWATER
 TO: CONCRETE, CURB & GUTTER
 TO: ROADWAY CONCRETE PAVEMENT
 TO: ROADWAY GRANULAR PAVEMENT
 TO: ROADWAY GRANULAR PAVEMENT

LEGEND:

- PERMANENT ROW REQUIRED
- PERMANENT EASEMENT REQUIRED (WATER NOT INCLUDING UNRECORDED SECTIONS)
- TEMPORARY EASEMENT REQUIRED (WATER NOT INCLUDING PERMANENT EASEMENTS)
- POST-PROJECT INCREASE IN USABLE LAND FOR U/L
- POST-PROJECT DECREASE IN USABLE LAND FOR U/L

LEGEND:

- PROPOSED PERMANENT RIGHT-OF-WAY
- PROPOSED PERMANENT EASEMENT (WATER OR DRAINAGE)
- TEMPORARY GRADING PERMIT

LEGEND:

- PERMANENT ROW REQUIRED
- PERMANENT EASEMENT REQUIRED (DECREASE)
- TEMPORARY EASEMENT REQUIRED
- POST-PROJECT INCREASE IN USABLE LAND FOR U/L
- POST-PROJECT DECREASE IN USABLE LAND FOR U/L

LEGEND:

- PERMANENT ROW REQUIRED
- PERMANENT EASEMENT REQUIRED (WATER NOT INCLUDING UNRECORDED SECTIONS)
- TEMPORARY EASEMENT REQUIRED (WATER NOT INCLUDING PERMANENT EASEMENTS)
- POST-PROJECT INCREASE IN USABLE LAND FOR U/L
- POST-PROJECT DECREASE IN USABLE LAND FOR U/L

LEGEND:

- PROPOSED PERMANENT RIGHT-OF-WAY
- PROPOSED PERMANENT EASEMENT (WATER OR DRAINAGE)
- TEMPORARY GRADING PERMIT

LEGEND:

- PERMANENT ROW REQUIRED
- PERMANENT EASEMENT REQUIRED (DECREASE)
- TEMPORARY EASEMENT REQUIRED
- POST-PROJECT INCREASE IN USABLE LAND FOR U/L
- POST-PROJECT DECREASE IN USABLE LAND FOR U/L

LEGEND:

- PERMANENT ROW REQUIRED
- PERMANENT EASEMENT REQUIRED (WATER NOT INCLUDING UNRECORDED SECTIONS)
- TEMPORARY EASEMENT REQUIRED (WATER NOT INCLUDING PERMANENT EASEMENTS)
- POST-PROJECT INCREASE IN USABLE LAND FOR U/L
- POST-PROJECT DECREASE IN USABLE LAND FOR U/L