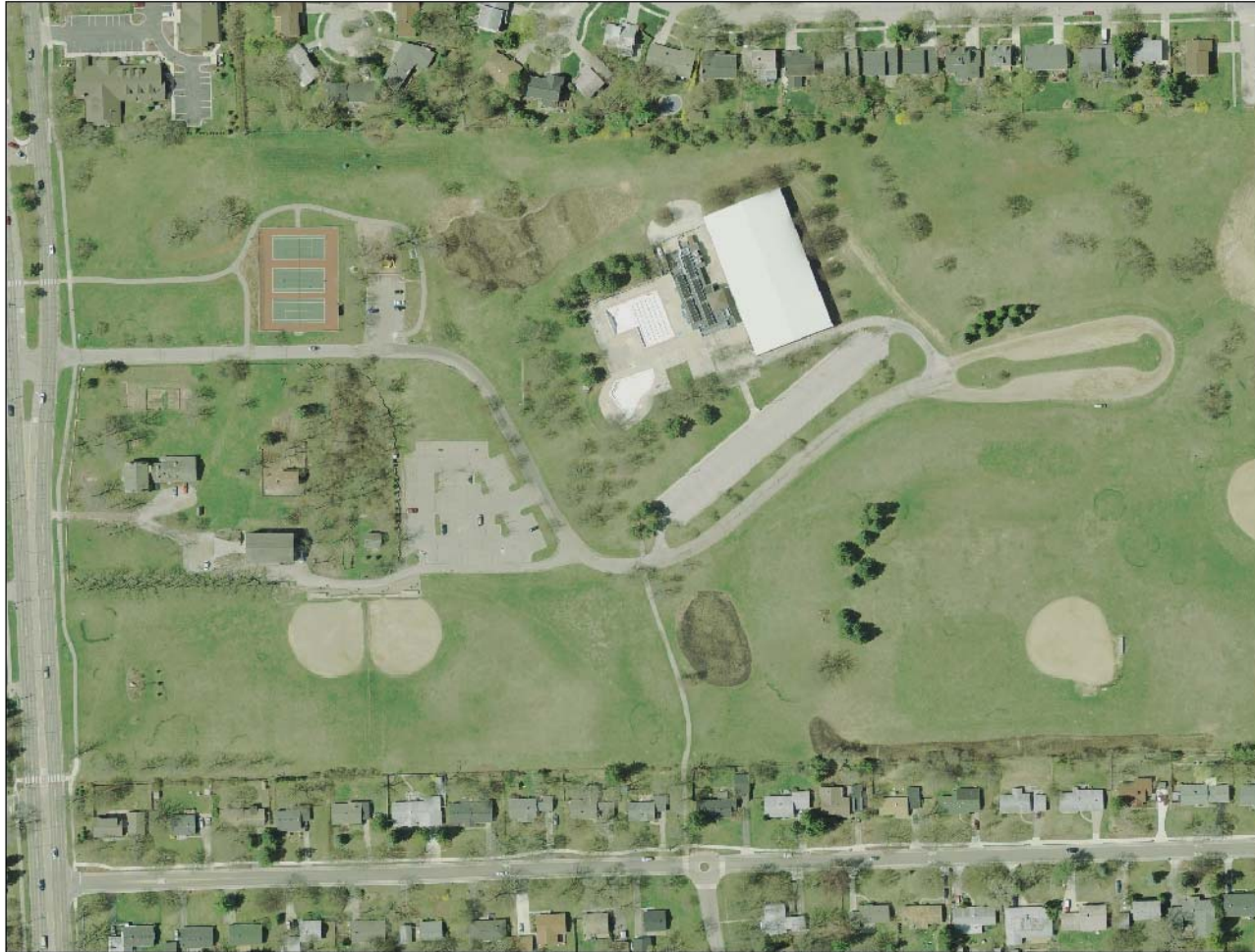


Buhr Park Identified Needs

- Repair deteriorated park roads
- Improve pedestrian circulation
- Continue implementation of stormwater master plan
- Comply with Americans With Disabilities Act
- Provide additional parking at Buhr Pool and Ice Arena and at Cobblestone Farm

Aerial view of Buhr Park



Entry Road Conditions



Entry Road Conditions



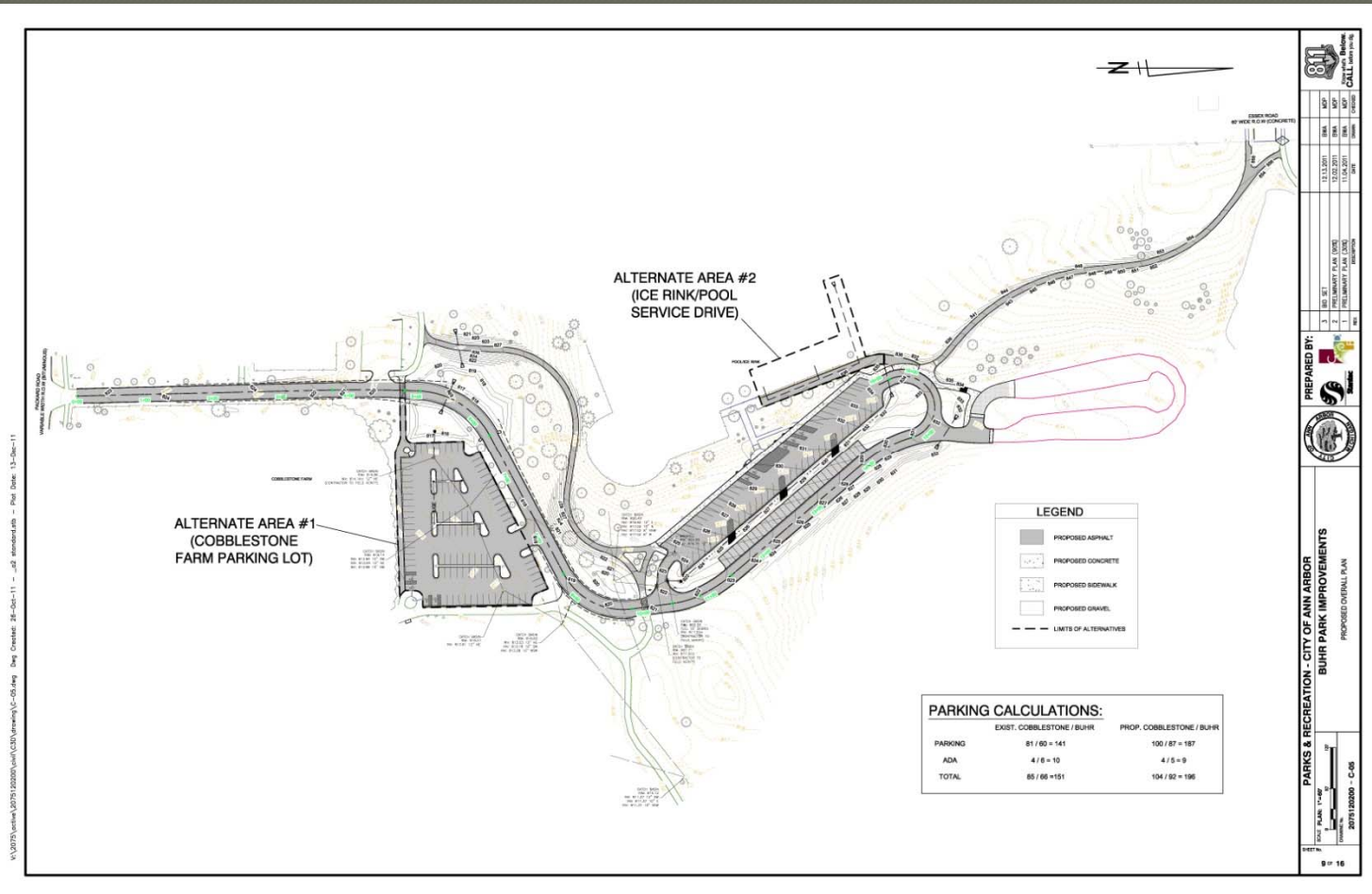
Buhr Pool and Ice Arena Parking Lot



Cobblestone Parking



Overview of proposed improvements



Next Steps

- Project proposed for City Council agenda on March 5
- Construction to begin early spring starting with Buhr Parking lot and working out towards Packard
- Park to remain open during construction