



▶ Parks & COVID-19

PAC, 6/16/2020



IMPORTANT:

Ann Arbor Parks and Recreation is implementing restrictions in an effort to adhere to Governor Whitmer's Executive Order in response to COVID-19, and to help keep our community safe. Effective **Tuesday, March 24**, usage of city parks and natural areas is limited to activities that do not involve direct contact with others, such as walking, hiking, running and cycling. Please make sure while engaged in any of these activities to remain at **least six feet** from others who do not live with you in your household. And if you are sick, please do not visit the parks until you are well.

Furthermore, public and private gatherings of any number of people occurring among persons not part of a single household are prohibited, and in an attempt to make every effort possible to stop the spread of COVID-19, the following **park amenities are closed until April 13**: playgrounds/play structures, game courts (basketball, tennis, pickleball), groomed and ungroomed athletic fields, golf courses, the Skatepark, disc golf courses, dog parks, BMX course and pavilions/shelters.

Ann Arbor Parks and Recreation encourages you to remain active outdoors as you are able, but please do so safely. **Thank you** for your patience as we follow the guidelines set by the CDC and the State of Michigan to stop the spread of COVID-19.

[A2GOV.ORG/COVID19](https://a2gov.org/covid19)

Timeline & Actions

- ▶ March 12, City begins to alter operations as a result of COVID-19
- ▶ Recreation Facilities are closed and programming is suspended
- ▶ March 24, In response to Governor Whitmer's Executive Order all park facilities and amenities are closed (playgrounds, courts, etc.)
- ▶ Hiking, biking, walking, running are encouraged
- ▶ No gatherings unless part of same household, 6 feet away

Timeline & Actions

- ▶ Messages shared with press releases, social media channels, web-site updates, email subscribers and other media.
- ▶ Refunds
- ▶ March 27, signage installed at park locations
- ▶ Parks staff must work from home unless performing essential work
- ▶ “maintenance of safe and sanitary public parks”

Practice social distancing on the Border-to-Border (B2B) Trail

Usage of city parks, natural areas and trails are limited to activities that do not involve direct contact with others, such as walking, hiking, running and cycling.

6 feet

DO NOT gather in groups on the trail.
Keep **SIX FEET** between you and others.
Carry hand sanitizer and disinfectant wipes if you have them.
Go around people and step off the trail until they pass.

[A2GOV.ORG/COVID19](https://a2gov.org/covid19)



TENNIS AND PICKLEBALL COURTS CLOSED



TENNIS AND PICKLEBALL
COURTS ARE **CLOSED**
UNTIL FURTHER NOTICE.

To help reduce the spread of COVID-19
please adhere to the following:

PARK AMENITIES ARE CLOSED UNTIL FURTHER NOTICE:

Playgrounds/play structures, game
courts (basketball, tennis, pickleball),
groomed and ungroomed athletic
fields, golf courses, the Skatepark,
disc golf courses, dog parks, BMX
course and pavilions/shelters.

[A2GOV.ORG/COVID19](https://a2gov.org/covid19)




Timeline & Actions

- ▶ April 8, remove tennis nets, cover basketball rims
- ▶ April 20, Park Operations starts to mow, working split shifts
- ▶ April 24, Stay at home order extended to May 15
- ▶ New Executive Order allows for golf and boating to resume, with restrictions
- ▶ May 1, City golf courses open

Timeline and Actions



- ▶ Latest Executive Order allows for “*Outdoor recreational activity includes walking, hiking, running, cycling, boating, golfing, or other similar activity.* . . .
- ▶ May 8, Some amenities reopen, provided physical distancing and other precautions are followed by users: Disc Golf, Dog Parks, Tennis, e.g.

**PRACTICE
PHYSICAL DISTANCING**



The best way to prevent illness is to eliminate direct exposure. Protect yourself. The Washtenaw County Health Department recommends keeping at least 6 FEET between yourself and others. Thank you.

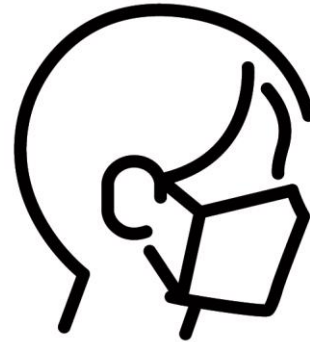
www.a2gov.org/COVID19



Timeline and Actions

- ▶ May 9, Farmer's Market reopens in phase 1, moves to phase 2 on May 20.
- ▶ May 17, decision to cancel day camp for the summer and keep outdoor pools closed is made.
- ▶ May 29, Argo and Gallup liveries open in a limited capacity
- ▶ June 1, Governor Whitmer Executive Order, stay at home lifted early, comment on camps/pools, opening of other outdoor facilities

Argo and Gallup Canoe & Kayak



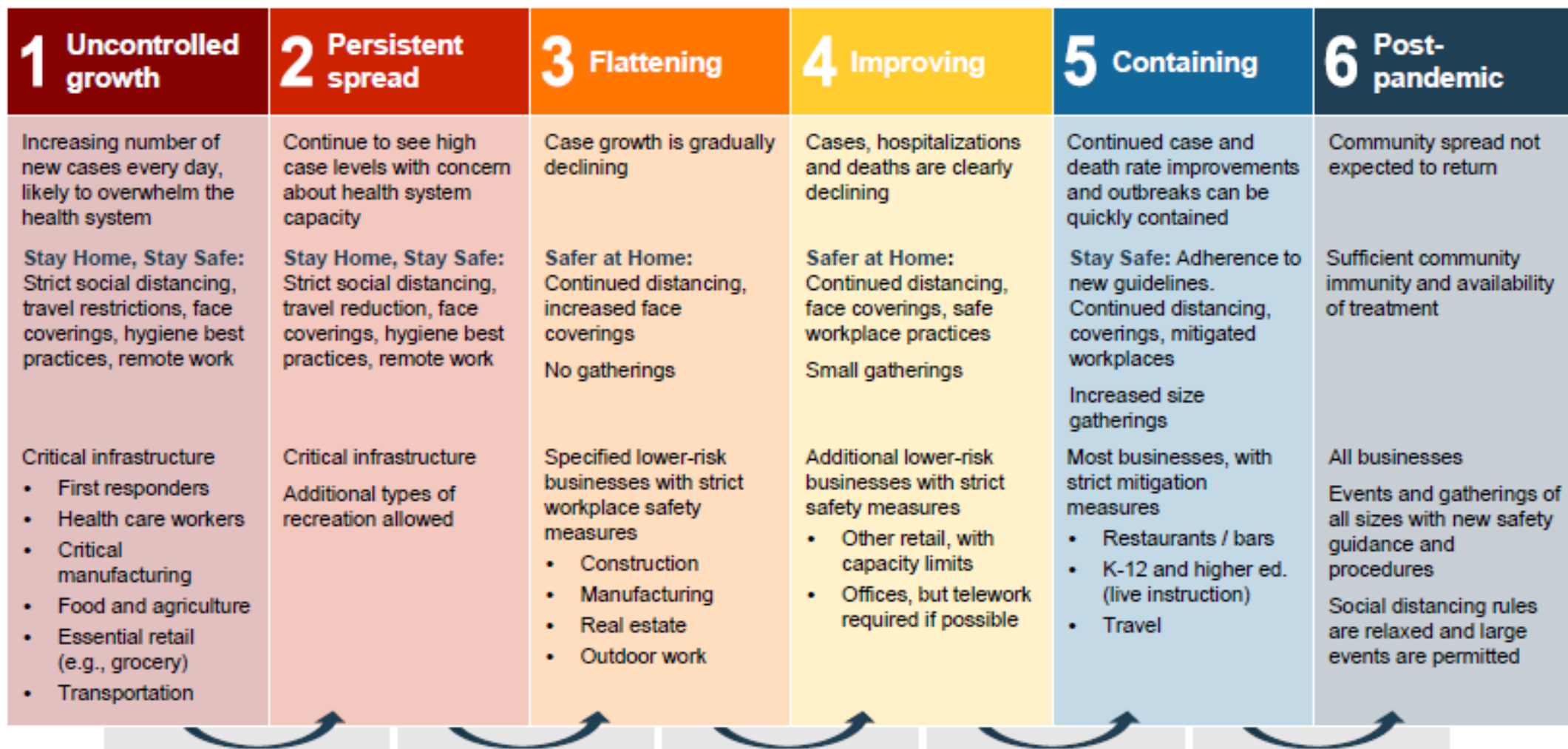
IMPORTANT:

You are required to wear a face mask on the canoe livery van when being transported to and from Argo and Gallup. Thank you!



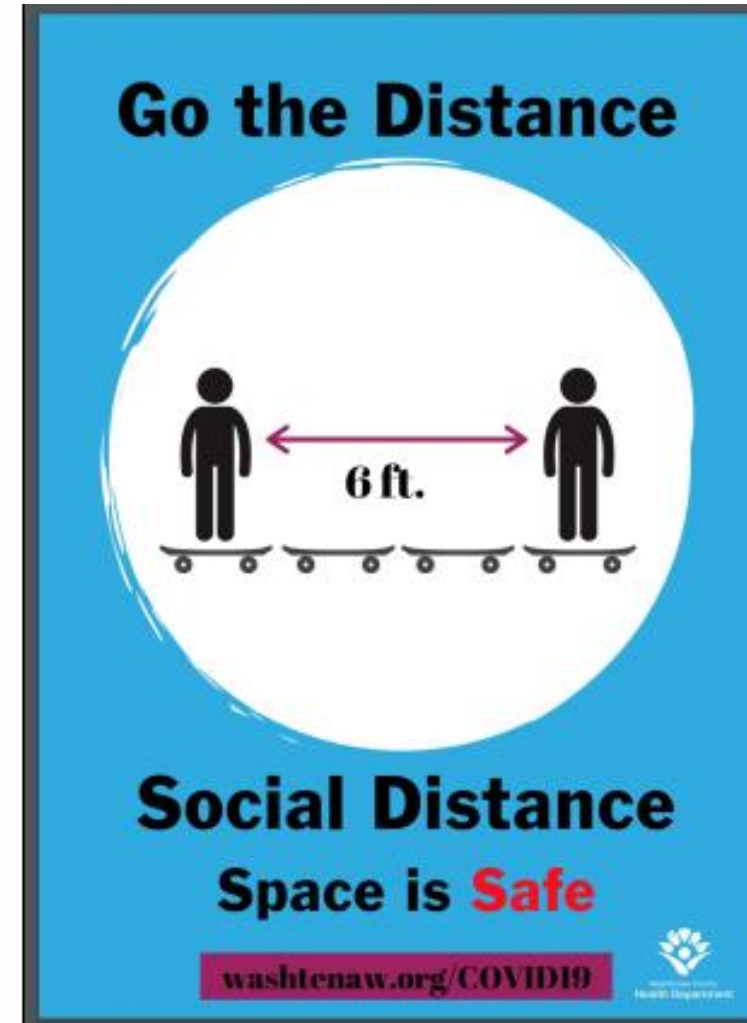
www.a2gov.org/COVID19parks





Timeline and Actions

- ▶ Staff review possibility of camps and outdoor pools
- ▶ June 8, Playgrounds and Skatepark reopen. Oakland County and other agencies reopen playgrounds and skateparks
- ▶ June 10, decision to open Fuller Pool July 1 for modified use
- ▶ Buhr and Vets pools remain closed
- ▶ Camps remain cancelled



Emergency Order 2020-110, Pertinent Park information

- ▶ “Restaurants and bars may reopen fully on June 8. Swimming pools and day camps for kids will also be permitted to reopen on the same day. Those businesses and activities will be subject to safety guidance to mitigate the risk of infection.”
- ▶ BUT . . .
- ▶ “Outdoor services or facilities involving close contact of persons, for amusement or other recreational or entertainment purposes, such as amusement parks, arcades, bingo halls, bowling alleys, indoor climbing facilities, indoor dance areas, skating rinks, trampoline parks, and other similar recreational or entertainment facilities.”
- ▶ **REMAIN CLOSED**

Emergency Order 2020-110, Pertinent Park information

- ▶ “Indoor social gatherings and events of more than 10 people are prohibited. Outdoor social gatherings and events are permitted so long as people maintain six feet of distance from one another and the assemblage consists of no more than 100 people.”
- ▶ “Outdoor fitness classes, athletic practices, training sessions, or games, provided that coaches, spectators, and participants not from the same household maintain six feet of distance from one another at all times during such activities, and that equipment and supplies are shared to the minimum extent possible and are subject to frequent and thorough disinfection and cleaning.
- ▶ “Unless otherwise prohibited outdoor parks and recreational facilities may be open, provided that they make any reasonable modifications necessary to enable employees and patrons not part of the same household to maintain six feet of distance from one another, and provided that areas in which social distancing cannot be maintained be closed, subject to guidance issued by the Department of Health and Human Services.”

Emergency Order 2020-110, Pertinent Park information

- ▶ Day camps for children, as defined by Rule 400.11101(i) of the Michigan Administrative Code, may open as of June 8, 2020, subject to guidance issued by the Department of Licensing and Regulatory Affairs.
- ▶ LARA COVID-19 GUIDELINES
- ▶ **6 foot social distancing**
- ▶ **Inclement weather and available indoor space**
- ▶ **Limit Non-essential Visitors**
- ▶ **Aquatic venues...even greater importance to promote physical distancing of at least 6 feet both in and out of the water**

Current Status of Parks

- ▶ Athletic Fields - open for rental starting on Monday, June 22. Rental groups will need to provide plans for adhering to the current Executive Orders in terms of social distancing prior to renting.
- ▶ Basketball Courts - shooting baskets individually or with members of the same household is allowed. No team game play is allowed. Basketball courts are signed to reflect this change.
- ▶ Argo & Gallup Liveries - open, but limited spots and reservations in advance are required
 - ▶ No tube rentals or sales
 - ▶ Limits on number of people in vans
 - ▶ Staff mostly work outdoors
 - ▶ Cleaning equipment
- ▶ Bryant Community Center - open for essential services such as food distribution, hygiene product distribution and educational home kits.

Current Status of Parks

- ▶ Cobblestone Farm - indoor rentals not allowed at this time
- ▶ Disc Golf - open
- ▶ Dog Parks - open
- ▶ Farmers Market - open in phase 2, shop in person or curbside pickup, spacing between vendors greater
- ▶ Foot Golf - open

Ann Arbor Farmers Market: Stay safe by following these guidelines



Please follow the one-way traffic patterns established at the market. Proceed directly to your vendor then exit the market. Move outside of the market area to socialize.



Please make your purchases quickly and efficiently while maintaining a physical distance of six feet throughout the market. Our goal is to protect you, the vendors and our staff.



Face coverings are required to be worn by vendors. We encourage customers to wear them as well for your safety.



Frequently wash or sanitize your hands to prevent the spread of pathogens from person-to-person. There are several handwashing stations throughout the market.



www.a2gov.org/COVID19parks

DO YOUR PART

AT LEAST 6 FEET

STAY SIX FEET APART

PLEASE PRACTICE PHYSICAL DISTANCING AND STAY TWO CLUB LENGTHS APART. THANK YOU.

Thank you

Parks & Recreation
CITY OF ANN ARBOR

Current Status of Parks

- ▶ Volunteer events, NAP, GIVE365
 - ▶ Small groups practicing social distancing
 - ▶ Work by crews resumed outdoors
- ▶ Golf
 - ▶ Limited number of people in clubhouse
 - ▶ Adjustments on the golf course
 - ▶ Instruction classes will take place

Current Status of Parks



▶ Outdoor Pools

- ▶ Fuller open July 1
- ▶ Buhr and Vets remain closed
- ▶ 90-minute time slots for lap swim and family swim available
- ▶ Register on-line or over phone
- ▶ Limited amount of people
- ▶ No deck chairs, shared equipment
- ▶ No programming
- ▶ No water slide

Current Status of Parks

- ▶ Playgrounds - open
- ▶ Senior Center - remains closed.
- ▶ Shelters/Pavilions - available July 1, 100 people or less, plan for social distancing
- ▶ Skatepark - open
- ▶ Tennis Courts - open

ENJOY THE PARKS SAFELY!

GET SOME FRESH AIR
BIKE/HIKE/RUN

DISPOSE OF TRASH

WEAR A MASK INSIDE
BUILDINGS AND AROUND
OTHERS IN PUBLIC PLACES

EXPLORE THE
160+ PARKS AND
NATURAL AREAS

SHOP LOCAL AT
THE ANN ARBOR
FARMERS MARKET

PLEASE MAINTAIN PHYSICAL
DISTANCING OF AT LEAST SIX FEET
BETWEEN YOURSELF AND OTHERS.
FORM A SINGLE FILE LINE WHEN
PASSING ON A TRAIL OR WALKWAY.

a2gov.org/COVID19parks

Parks & Recreation
CITY OF ANN ARBOR

BE SAFE

The infographic features several icons: a rainbow and sun for fresh air, a recycling symbol for trash disposal, a blue face mask, a tree for parks and natural areas, a shopping bag with vegetables for local shopping, a pair of blue sneakers and a pair of green sneakers with arrows between them and a warning sign for physical distancing, and a circular logo with a tree and the text 'BE SAFE'.

Overview of Financial Impact

▶ FY2020, revenue

- ▶ Camp refunds about \$450,000
- ▶ Additional lost revenue March - June 30 approximately another \$1,000,000
 - ▶ Early end to Vets Ice Arena
 - ▶ Outdoor pools closed, no programs
 - ▶ Rentals of shelters/pavilions
 - ▶ Late starts to both golf and liveries
- ▶ Golf revenue is more than usual
- ▶ Liveries operating at about 33% capacity

▶ FY2020, expenses

- ▶ Approximately \$500,000 in savings
 - ▶ Savings on seasonal pay
 - ▶ Lower utilities
 - ▶ Savings on materials and supplies
- ▶ However, many expenses are fixed costs
- ▶ Finding that more staff support is needed at programs that have restarted

Financial Impact

- ▶ For FY21 will update budget as year progresses and more information is known
- ▶ Will have a better idea of demand and staffing models
- ▶ May need to consider fee adjustments
- ▶ In December we will start budget development process for FY22 & FY23

REOPENING MONDAY, JUNE 8



After reviewing Governor Whitmer's latest order Ann Arbor Parks & Recreation will **reopen** playgrounds as well as the Ann Arbor Skatepark on **Monday, June 8**. Signage at the playgrounds and Ann Arbor Skatepark will be updated by early next week. As a reminder, playground equipment and the Skatepark, is not cleaned or sanitized. Also, we ask that park users continue to practice safety protocols including remaining six feet apart from others.

Another update will be provided early next week regarding the status of outdoor pools and day camps. Thank you for your support.



[A2GOV.ORG/COVID19PARKS](https://a2gov.org/covid19parks)

Positive Lessons Learned

- ▶ Highlights the importance and need for outdoor public spaces for people to recreate
- ▶ As facilities reopen we hear how important the parks are to people for so many different reasons
- ▶ Initial demand for resumption of activities seems high
- ▶ Opportunity to try new approaches:
 - ▶ Livery reservations
 - ▶ Market curbside pickup
 - ▶ Tee time spacing
- ▶ Parks system is full of employees that care deeply about what they do and are creative problem solvers