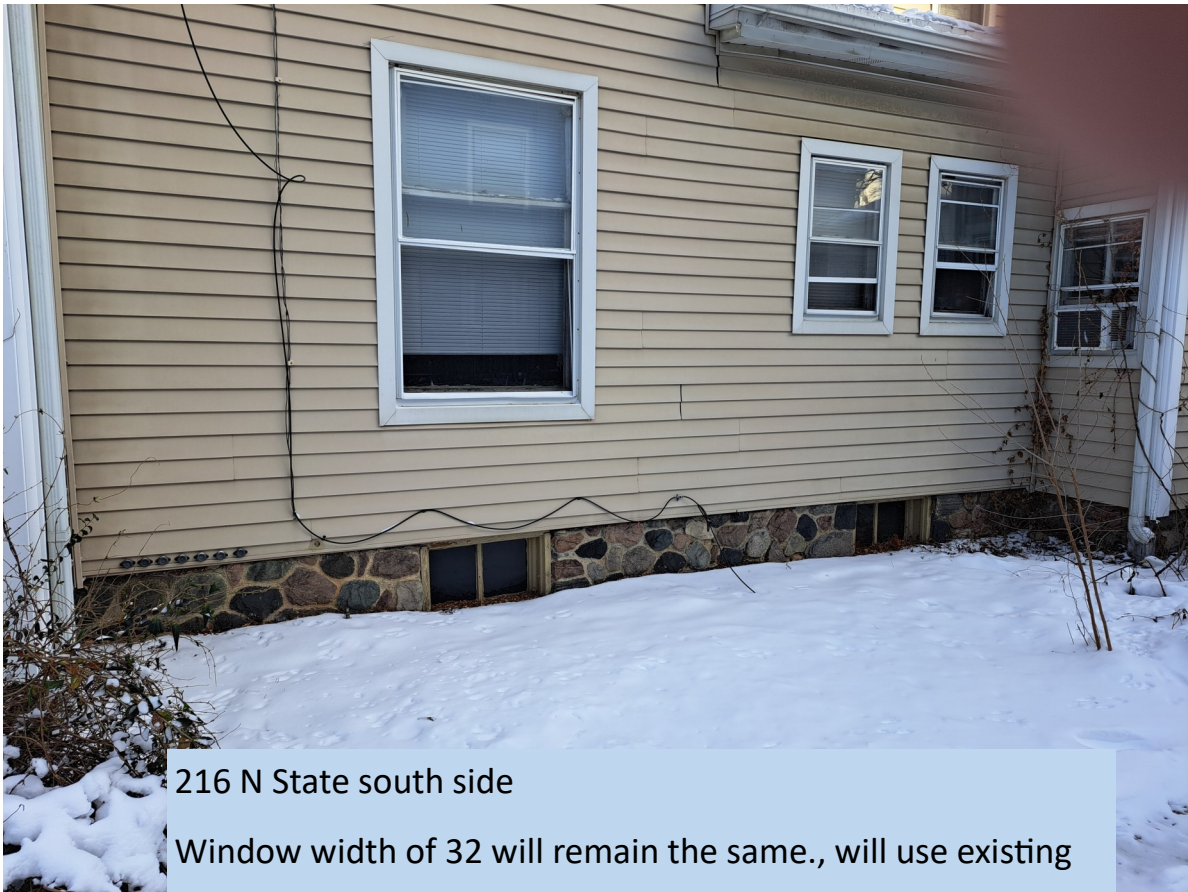




View from sidewalk



216 N State south side

Window width of 32 will remain the same., will use existing stone opening width but need to go below grade to increase opening height. Any foundation work is below grade and will not be visible walking by.



Proposed



View from sidewalk



216 N State westside driveway

Window width of 32 will remain the same., will use existing stone opening width but need to go below grade to increase opening height. Any foundation work is below grade and will not be visible walking by.

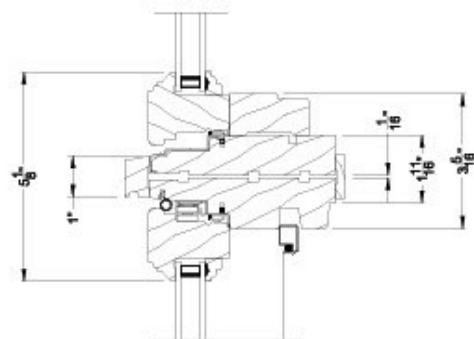
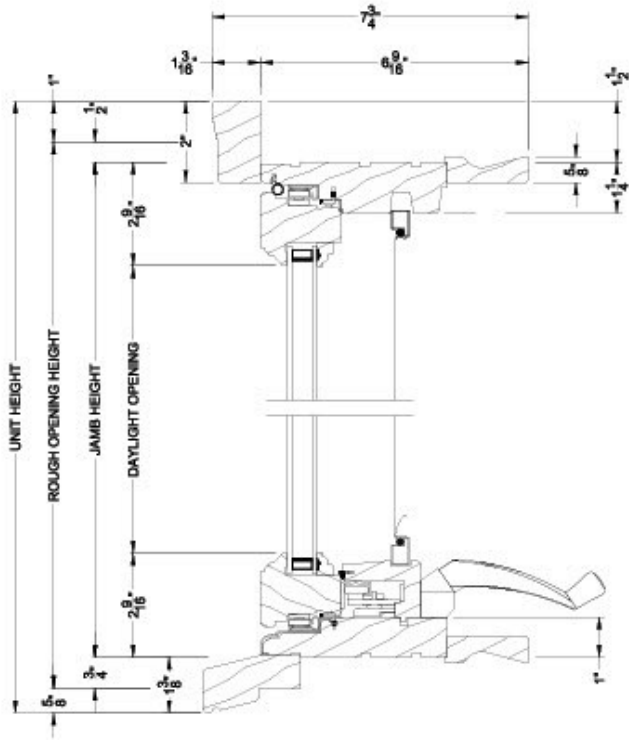


Weather Shield®

Premium Wood Series™

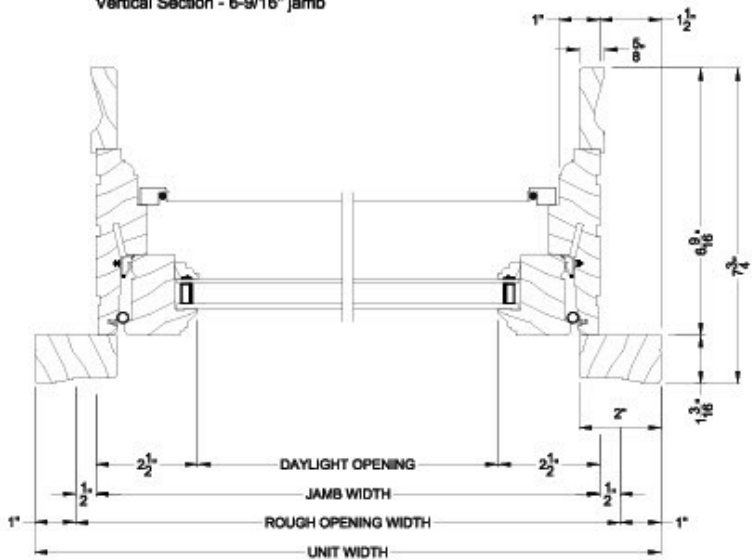
Casement Windows

CROSS SECTION DETAILS

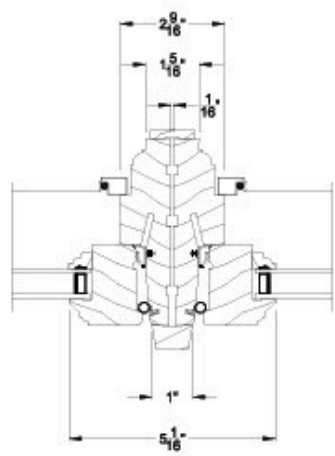


PREMIUM WOOD CASEMENT WINDOW
Horizontal Stack Section - Transom Stack over Casement

PREMIUM WOOD CASEMENT WINDOW (6204)
Vertical Section - 6-9/16" jamb



PREMIUM WOOD CASEMENT WINDOW (6204)
Horizontal Section - 6-9/16" jamb



PREMIUM WOOD CASEMENT WINDOW
Vertical Mull Section

Note: All dimensions are approximate. Weather Shield reserves the right to change specifications without notice.



PREMIUM SERIES ALL WOOD CASEMENT

From craftsman to contemporary architecture, Weather Shield all wood casement windows are versatile and easily complement a variety of designs. Available in a variety of styles including French, eyebrow, bows, bays, picture combination windows and more.



Example of installed egress window



Premium Wood Series™

Elevation Details

Casement Windows (6204)

Operating left shown. Operating right available.

Unit Dimension	1'-8 1/2"	1'-10 1/2"	2'-2 1/2"	2'-6 1/2"	2'-8 1/2"	2'-10 1/2"	3'-2 1/2"
Jamb Dimension	1'-5 1/2"	1'-7 1/2"	1'-11 1/2"	2'-3 1/2"	2'-5 1/2"	2'-7 1/2"	2'-11 1/2"
Rough Opening	1'-6 1/2"	1'-8 1/2"	2'-0 1/2"	2'-4 1/2"	2'-6 1/2"	2'-8 1/2"	3'-0 1/2"
Metric R.O. (mm)	470	521	622	724	775	826	927
Glass Size	13 1/2"	15 1/2"	19 1/2"	23 1/2"	25 1/2"	27 1/2"	31 1/2"

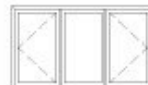
1620	1620	2020	2420	2620	2820	3020
1626	1826	2026	2426	2626	2826	3026
1630	1830	2030	2430	2630	2830	3030
1636	1836	2036	2436	2636	2836	3036
1640	1840	2040	2440	2640	2840	3040
1646	1846	2046	2446	2646	2846	3046
1650	1850	2050	2450	2650	2850	3050
1656	1856	2056	2456	2656	2856	3056
1660	1860	2060	2460	2660	2860	3060
1666	1866	2066	2466	2666	2866	3066
1670	1870	2070	2470	2670	2870	3070
1676	1876	2076	2476	2676	2876	3076



2 - Wide Units

Width Dimensions

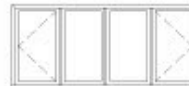
Base Code	Jamb Dimension (Frame Size)	Unit Dimension (Brickmould Size)	Rough Opening	Metric R.O. (mm)
CS2-16	2'-11 1/16"	3'-2 1/16"	3'-0 1/16"	916
CS2-18	3'-3 1/16"	3'-6 1/16"	3'-4 1/16"	1018
CS2-20	3'-11 1/16"	4'-2 1/16"	4'-0 1/16"	1221
CS2-24	4'-7 1/16"	4'-10 1/16"	4'-8 1/16"	1424
CS2-26	4'-11 1/16"	5'-2 1/16"	5'-0 1/16"	1526
CS2-28	5'-3 1/16"	5'-6 1/16"	5'-4 1/16"	1627



3 - Wide Units

Width Dimensions

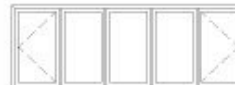
Base Code	Jamb Dimension (Frame Size)	Unit Dimension (Brickmould Size)	Rough Opening	Metric R.O. (mm)
CS3-16	4'-4 5/8"	4'-7 5/8"	4'-5 5/8"	1362
CS3-18	4'-10 5/8"	5'-1 5/8"	4'-11 5/8"	1514
CS3-20	5'-10 5/8"	6'-1 5/8"	5'-11 5/8"	1819
CS3-24	6'-10 5/8"	7'-1 5/8"	6'-11 5/8"	2124
CS3-26	7'-4 5/8"	7'-7 5/8"	7'-5 5/8"	2276
CS3-28	7'-10 5/8"	8'-1 5/8"	7'-11 5/8"	2429



4 - Wide Units

Width Dimensions

Base Code	Jamb Dimension (Frame Size)	Unit Dimension (Brickmould Size)	Rough Opening	Metric R.O. (mm)
CS4-16	5'-10 3/16"	6'-1 3/16"	5'-11 3/16"	1808
CS4-18	6'-6 3/16"	6'-9 3/16"	6'-7 3/16"	2011
CS4-20	7'-10 3/16"	8'-1 3/16"	7'-11 3/16"	2418
CS4-24	9'-2 3/16"	9'-5 3/16"	9'-3 3/16"	2824
CS4-26	9'-10 3/16"	10'-1 3/16"	9'-11 3/16"	3027
CS4-28	10'-6 3/16"	10'-9 3/16"	10'-7 3/16"	3231



5 - Wide Units

Width Dimensions

Base Code	Jamb Dimension (Frame Size)	Unit Dimension (Brickmould Size)	Rough Opening	Metric R.O. (mm)
CS5-16	7'-3 3/4"	7'-6 3/4"	7'-4 3/4"	2254
CS5-18	8'-1 3/4"	8'-4 3/4"	8'-2 3/4"	2508
CS5-20	9'-9 3/4"	10'-0 3/4"	9'-10 3/4"	3016
CS5-24	11'-5 3/4"	11'-8 3/4"	11'-6 3/4"	3524

