

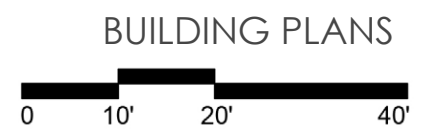
LEVEL 2 PLAN



LEVEL 3 PLAN

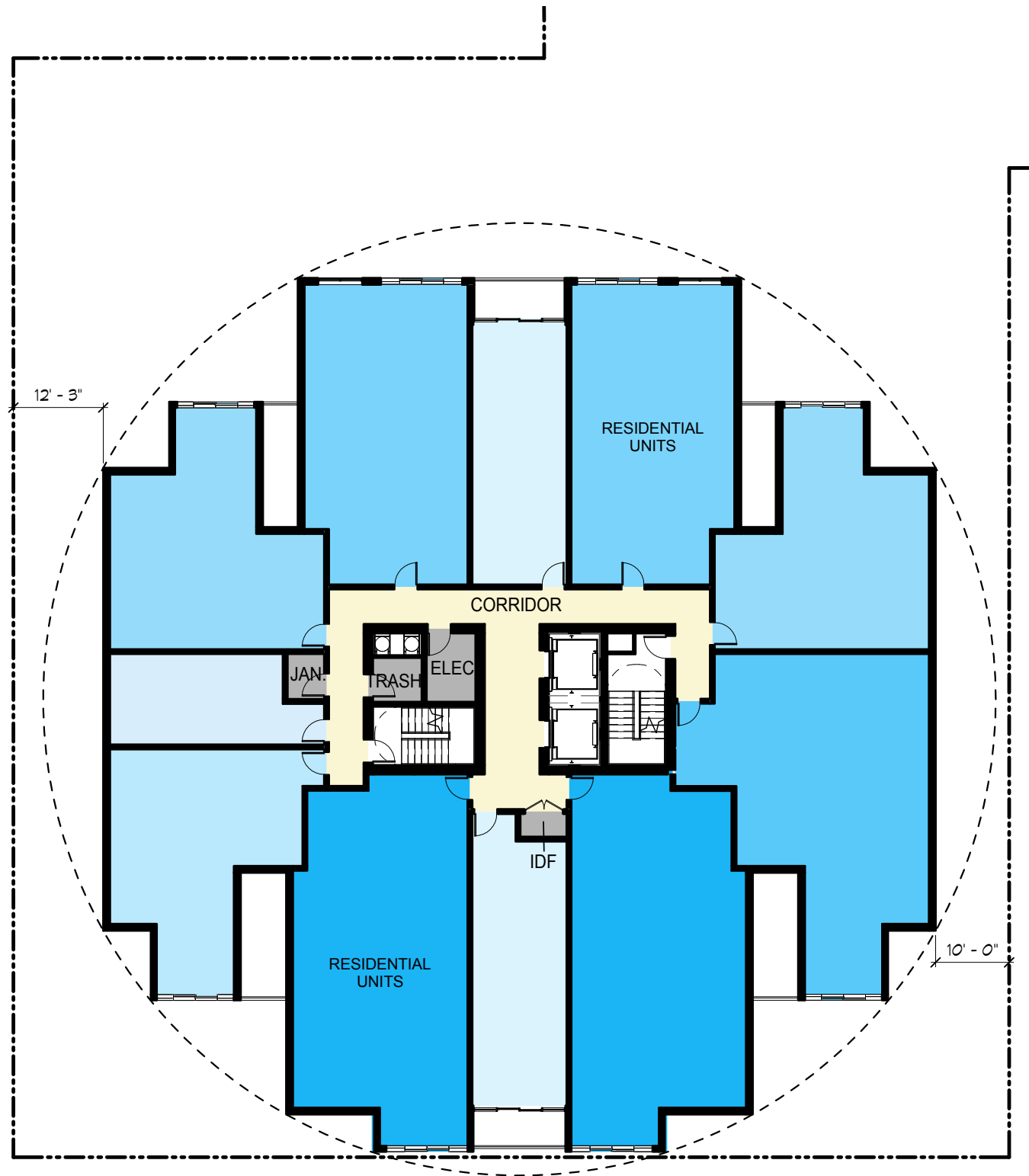


513 & 603 E. HURON ST
ANN ARBOR

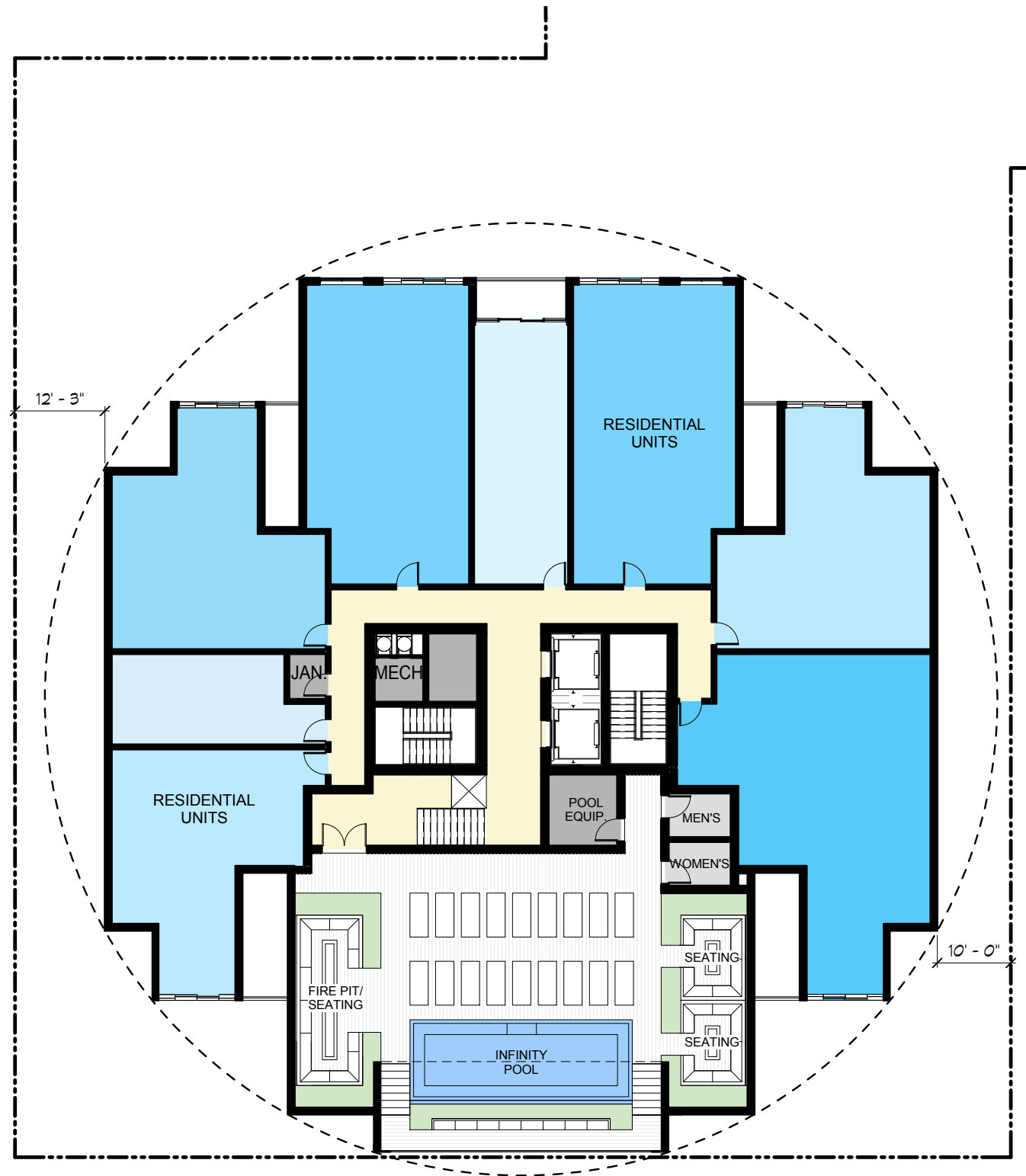


DRB APPLICATION
12.02.2015

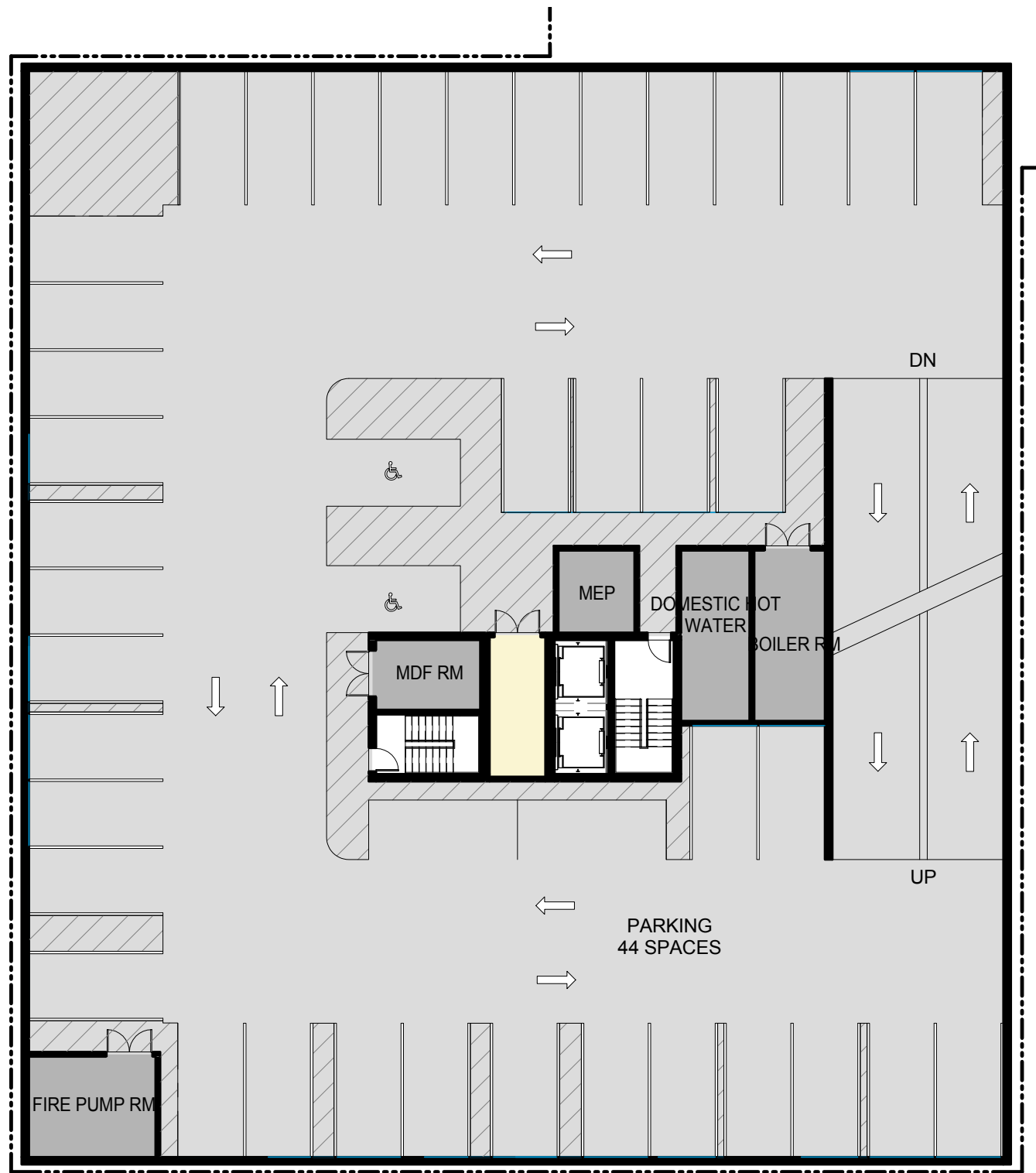




TYPICAL TOWER PLAN



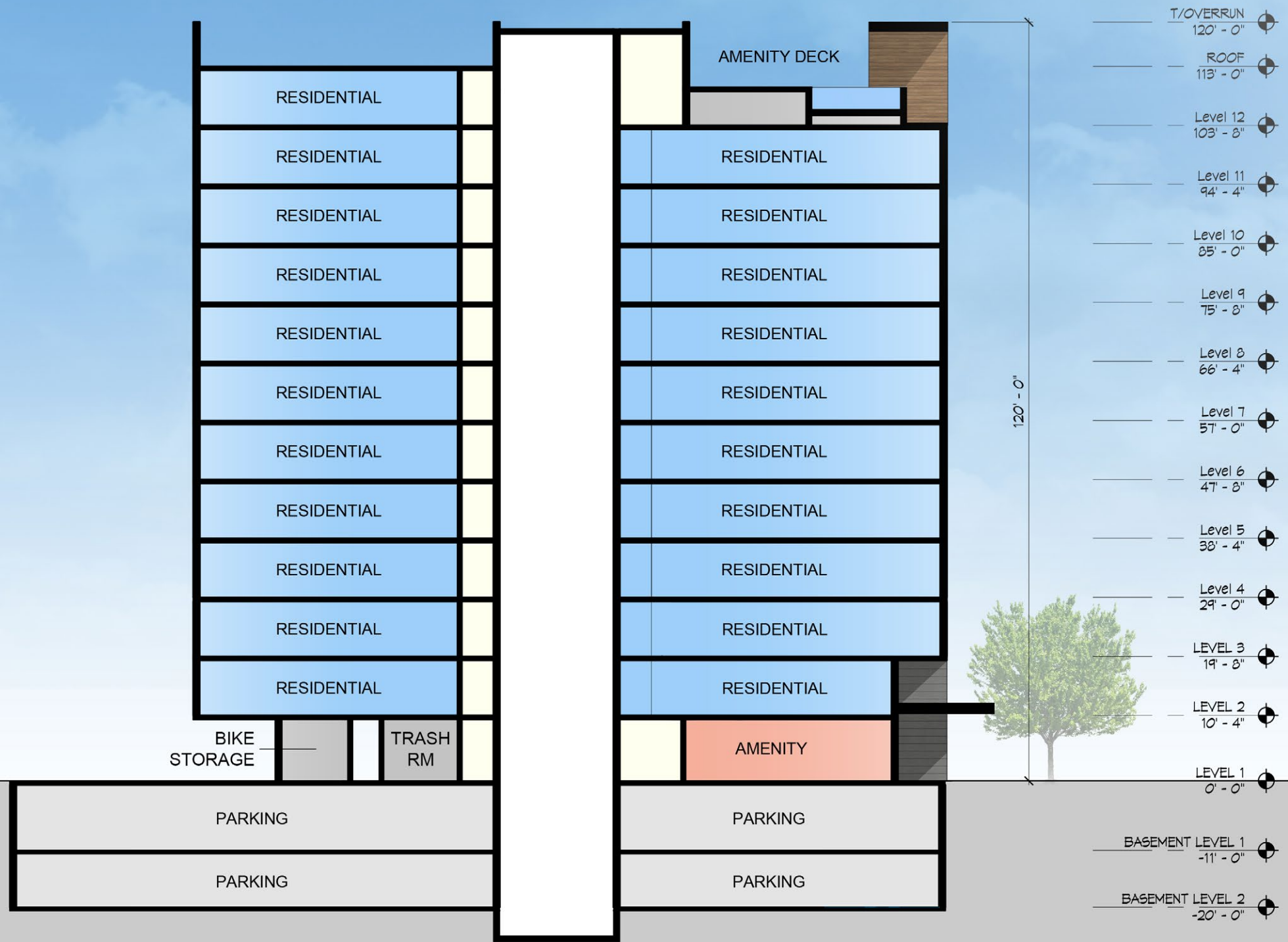
ROOF DECK PLAN



BASEMENT LEVEL 1 PLAN



BASEMENT LEVEL 2 PLAN





513 & 603 E. HURON ST
ANN ARBOR

VIEW FROM EAST HURON

DRB APPLICATION
12.02.2015





513 & 603 E. HURON ST
ANN ARBOR

VIEW FROM EAST HURON

DRB APPLICATION
12.02.2015





513 & 603 E. HURON ST
ANN ARBOR

VIEW FROM NORTH

DRB APPLICATION
12.02.2015



- ⊕ T/OVERRUN
120' - 0"
- ⊕ ROOF
113' - 0"
- ⊕ Level 12
103' - 8"
- ⊕ Level 11
94' - 4"
- ⊕ Level 10
85' - 0"
- ⊕ Level 9
75' - 8"
- ⊕ Level 8
66' - 4"
- ⊕ Level 7
57' - 0"
- ⊕ Level 6
47' - 8"
- ⊕ Level 5
38' - 4"
- ⊕ Level 4
29' - 0"
- ⊕ LEVEL 3
19' - 8"
- ⊕ LEVEL 2
10' - 4"
- ⊕ LEVEL 1
0' - 0"



- GLASS RAILING
- BRICK VENEER
- GRAY METAL PANEL
- PAINTED STEEL



513 & 603 E. HURON ST
ANN ARBOR

SOUTH ELEVATION

DRB APPLICATION
12.02.2015



- T/OVERRUN
120' - 0"
- ROOF
113' - 0"
- Level 12
103' - 8"
- Level 11
94' - 4"
- Level 10
85' - 0"
- Level 9
75' - 8"
- Level 8
66' - 4"
- Level 7
57' - 0"
- Level 6
47' - 8"
- Level 5
38' - 4"
- Level 4
29' - 0"
- LEVEL 3
19' - 8"
- LEVEL 2
10' - 4"
- LEVEL 1
0' - 0"



GLASS RAILING
BRICK VENEER
GRAY METAL PANEL

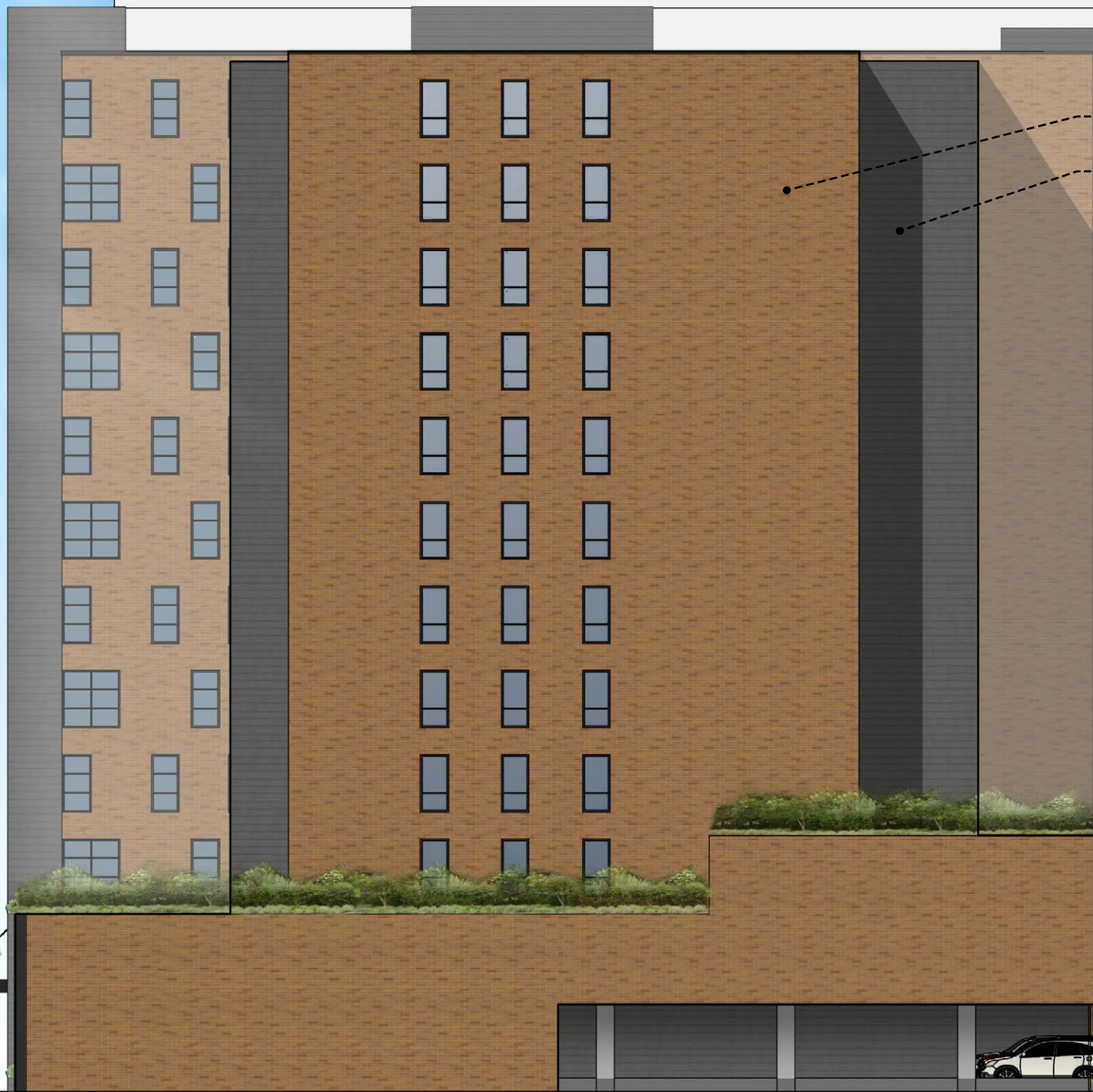


513 & 603 E. HURON ST
ANN ARBOR

NORTH ELEVATION
0 8' 16' 32'
DRB APPLICATION
12.02.2015



- ⊕ T/OVERRUN
120' - 0"
- ⊕ ROOF
113' - 0"
- ⊕ Level 12
103' - 8"
- ⊕ Level 11
94' - 4"
- ⊕ Level 10
85' - 0"
- ⊕ Level 9
75' - 8"
- ⊕ Level 8
66' - 4"
- ⊕ Level 7
57' - 0"
- ⊕ Level 6
47' - 8"
- ⊕ Level 5
38' - 4"
- ⊕ Level 4
29' - 0"
- ⊕ LEVEL 3
19' - 8"
- ⊕ LEVEL 2
10' - 4"
- ⊕ LEVEL 1
0' - 0"



BRICK VENEER
GRAY METAL PANEL



513 & 603 E. HURON ST
ANN ARBOR

EAST ELEVATION
0 8' 16' 32'
DRB APPLICATION
12.02.2015

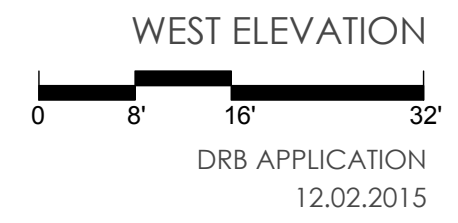


BRICK VENEER
GRAY METAL PANEL

- T/OVERRUN 120' - 0"
- ROOF 113' - 0"
- Level 12 103' - 8"
- Level 11 94' - 4"
- Level 10 85' - 0"
- Level 9 75' - 8"
- Level 8 66' - 4"
- Level 7 57' - 0"
- Level 6 47' - 8"
- Level 5 38' - 4"
- Level 4 29' - 0"
- LEVEL 3 19' - 8"
- LEVEL 2 10' - 4"
- LEVEL 1 0' - 0"



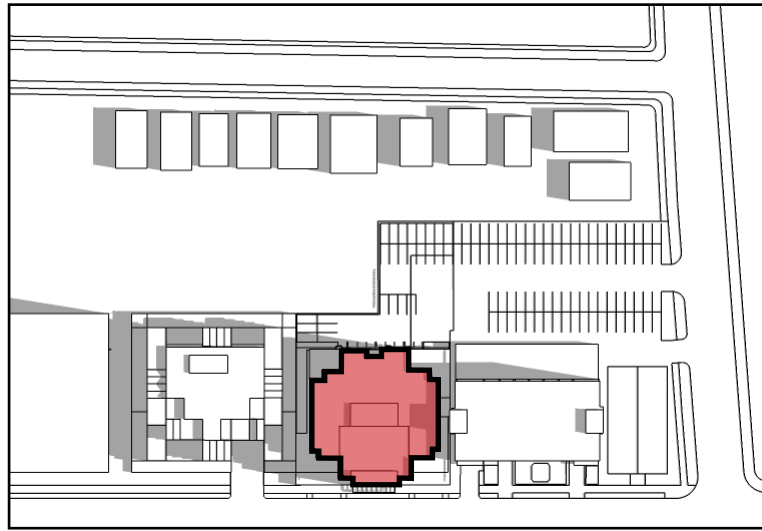
513 & 603 E. HURON ST
ANN ARBOR



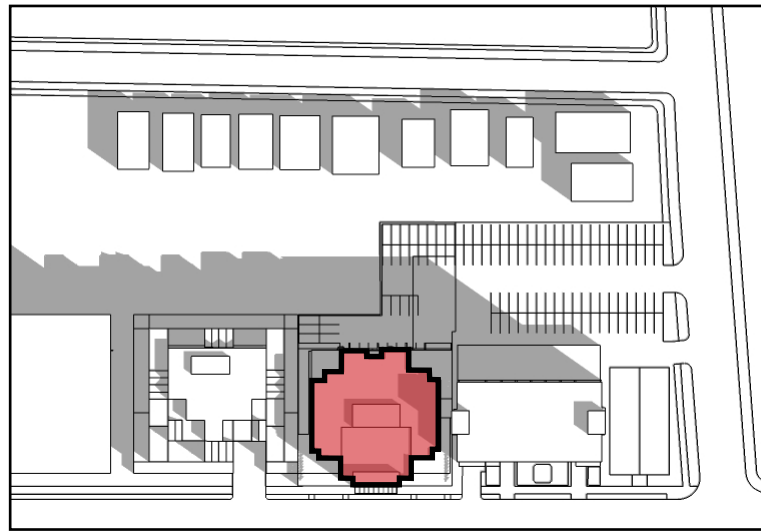
JUNE

MARCH/SEPTEMBER

DECEMBER



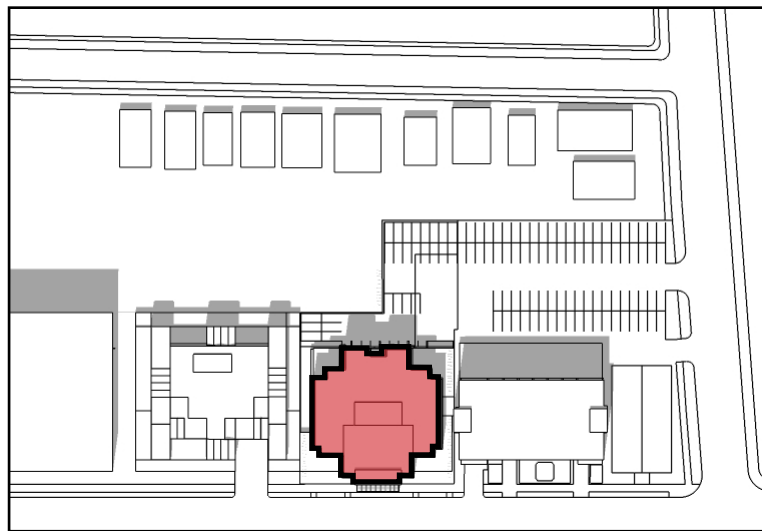
9 AM



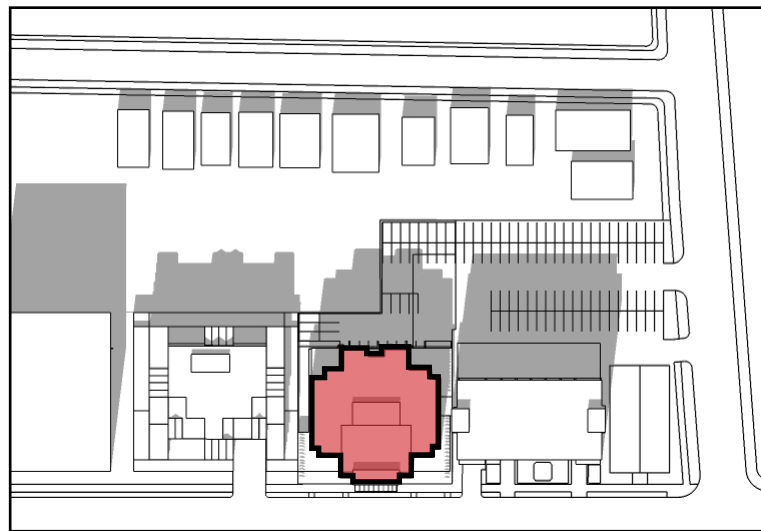
9 AM



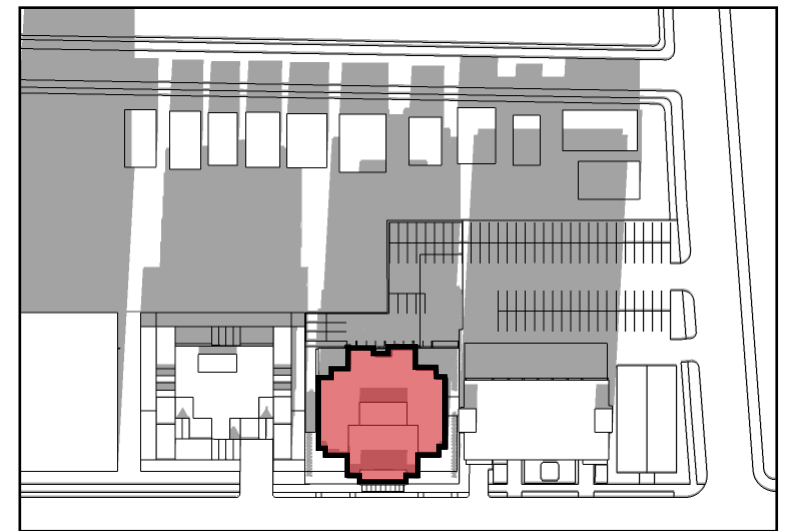
9 AM



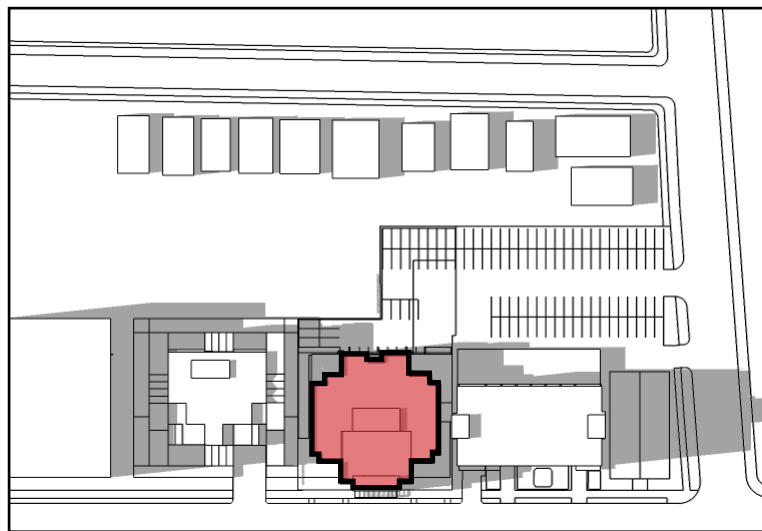
12 PM



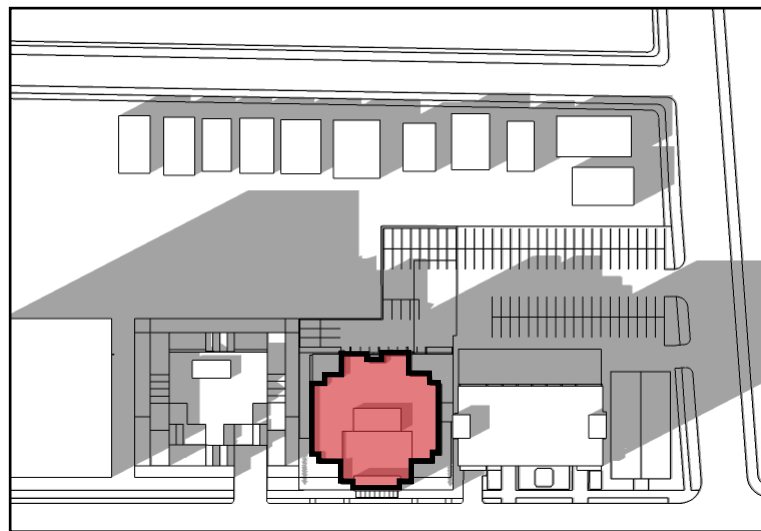
12 PM



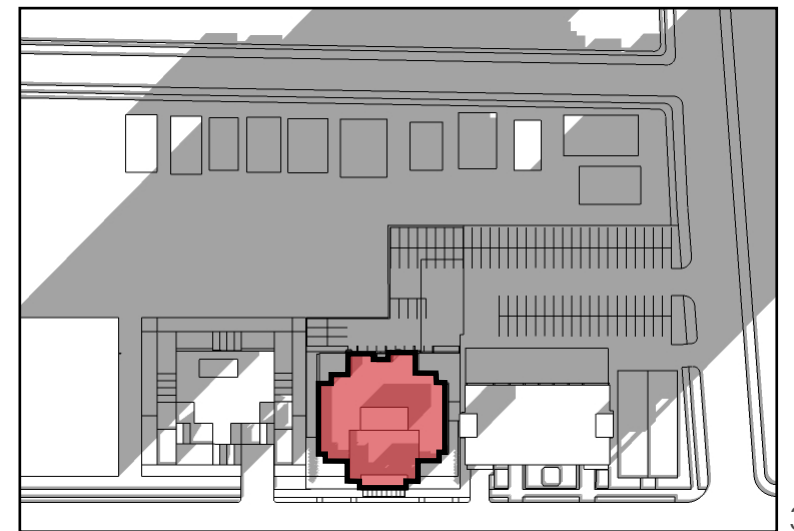
12 PM



3 PM



3 PM

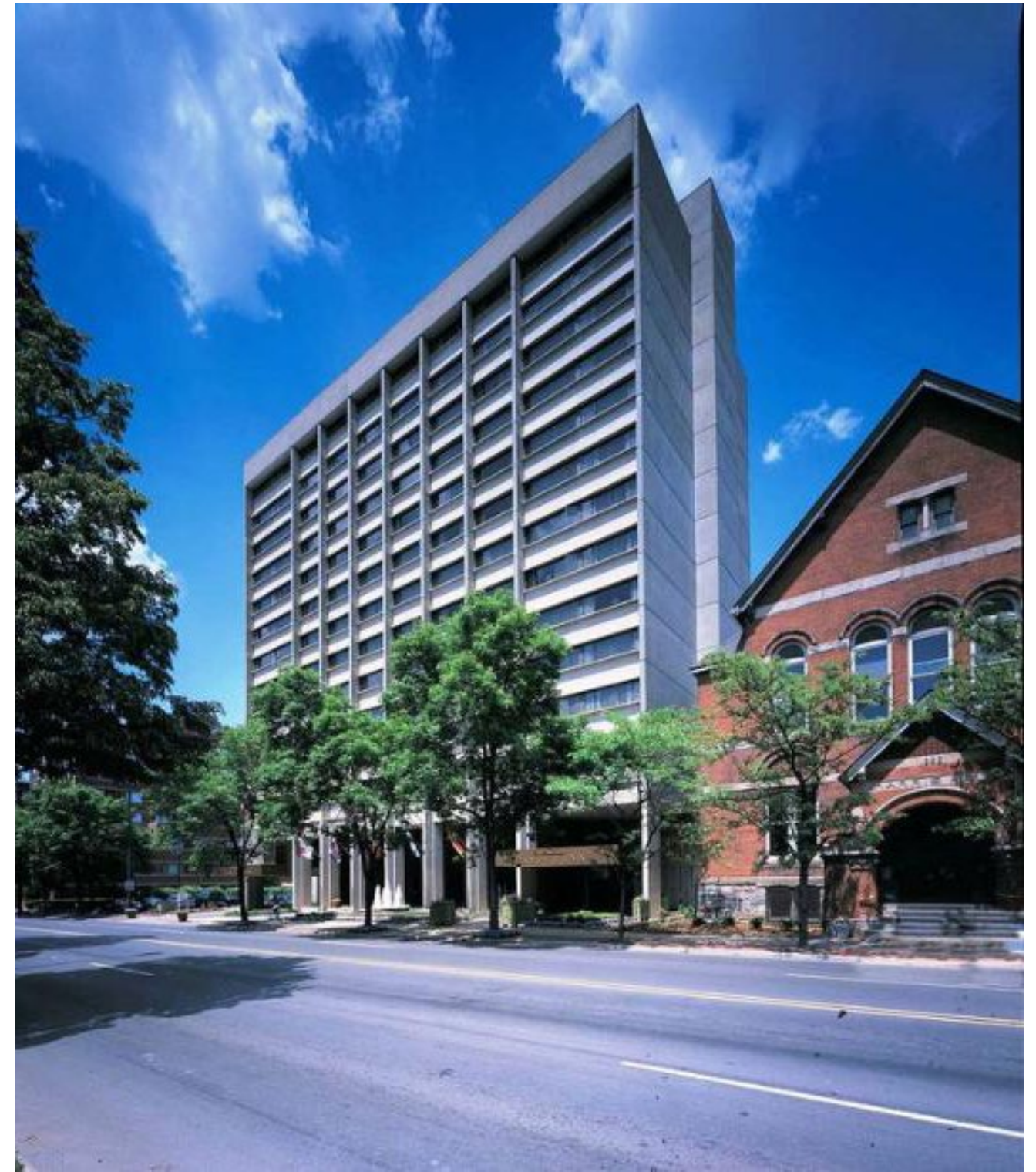


3 PM





SLOAN PLAZA (WEST OF SITE)



CAMPUS INN (EAST OF SITE)



513 & 603 E. HURON ST
ANN ARBOR

SITE CONTEXT

DRB APPLICATION
12.02.2015





FOUNDRY LOFTS (WEST OF SLOAN PLAZA)



HARRIS HALL (EAST OF CAMPUS INN)

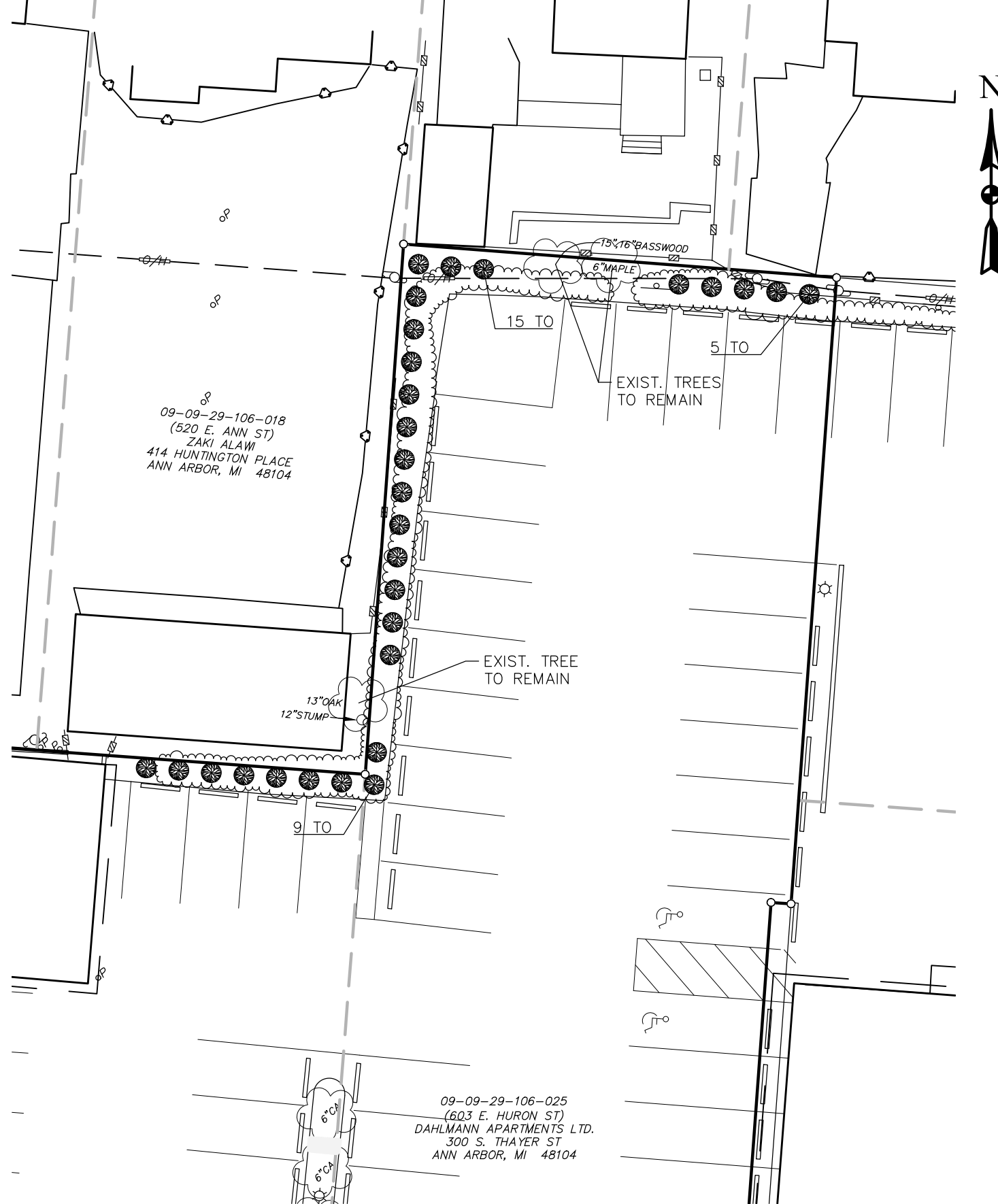


513 & 603 E. HURON ST
ANN ARBOR

SITE CONTEXT

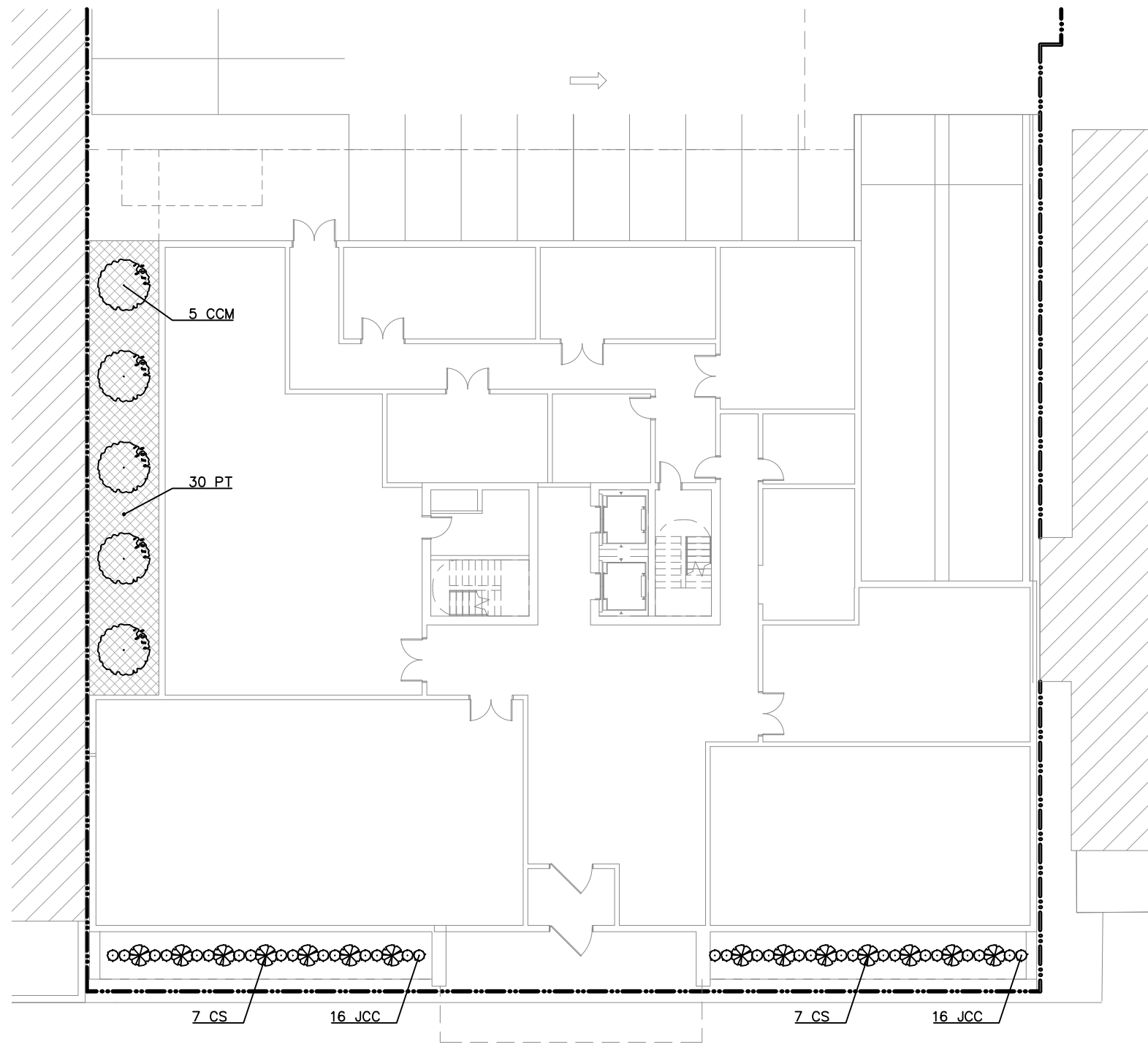
DRB APPLICATION
12.02.2015



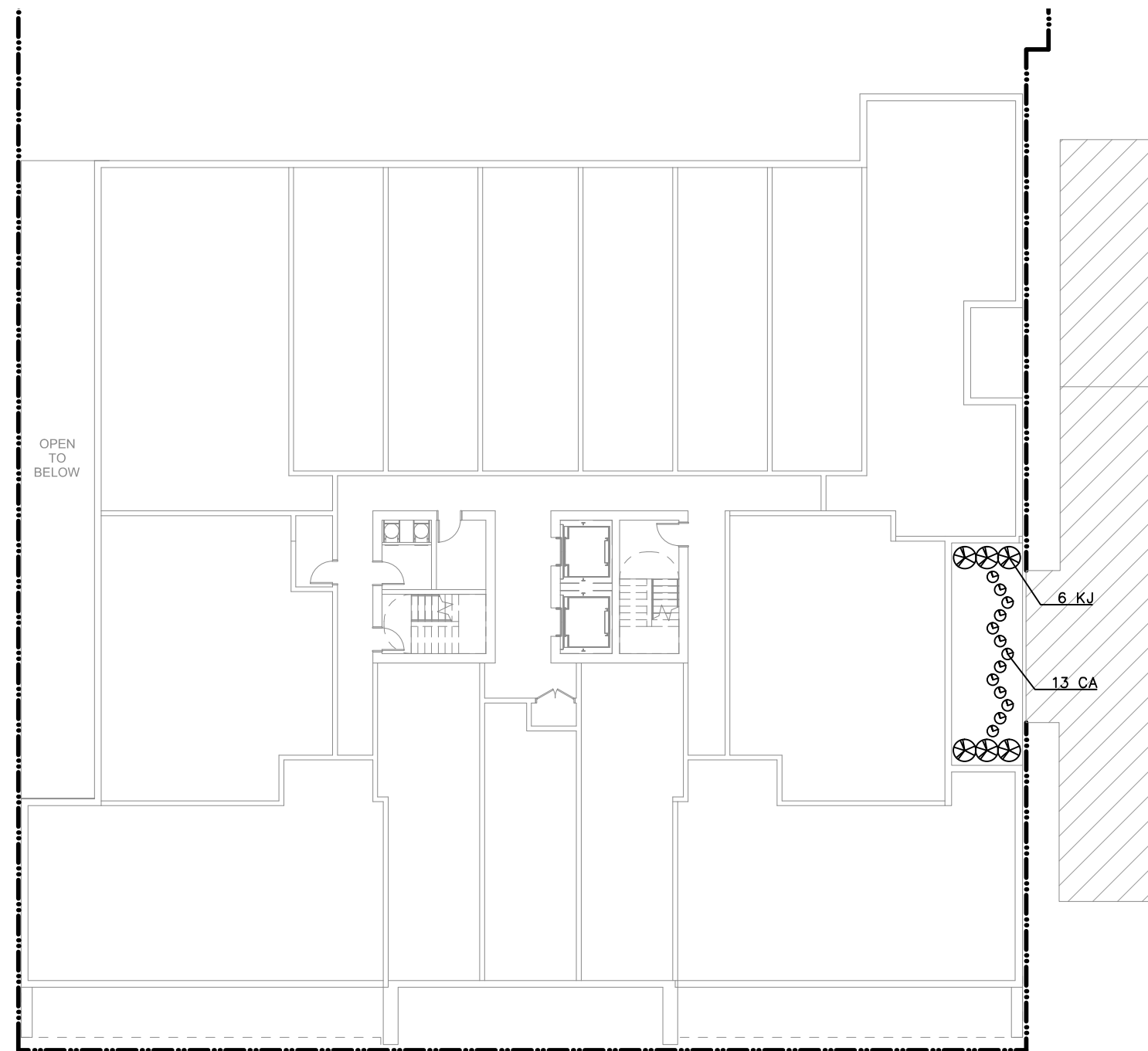


PLANT LIST

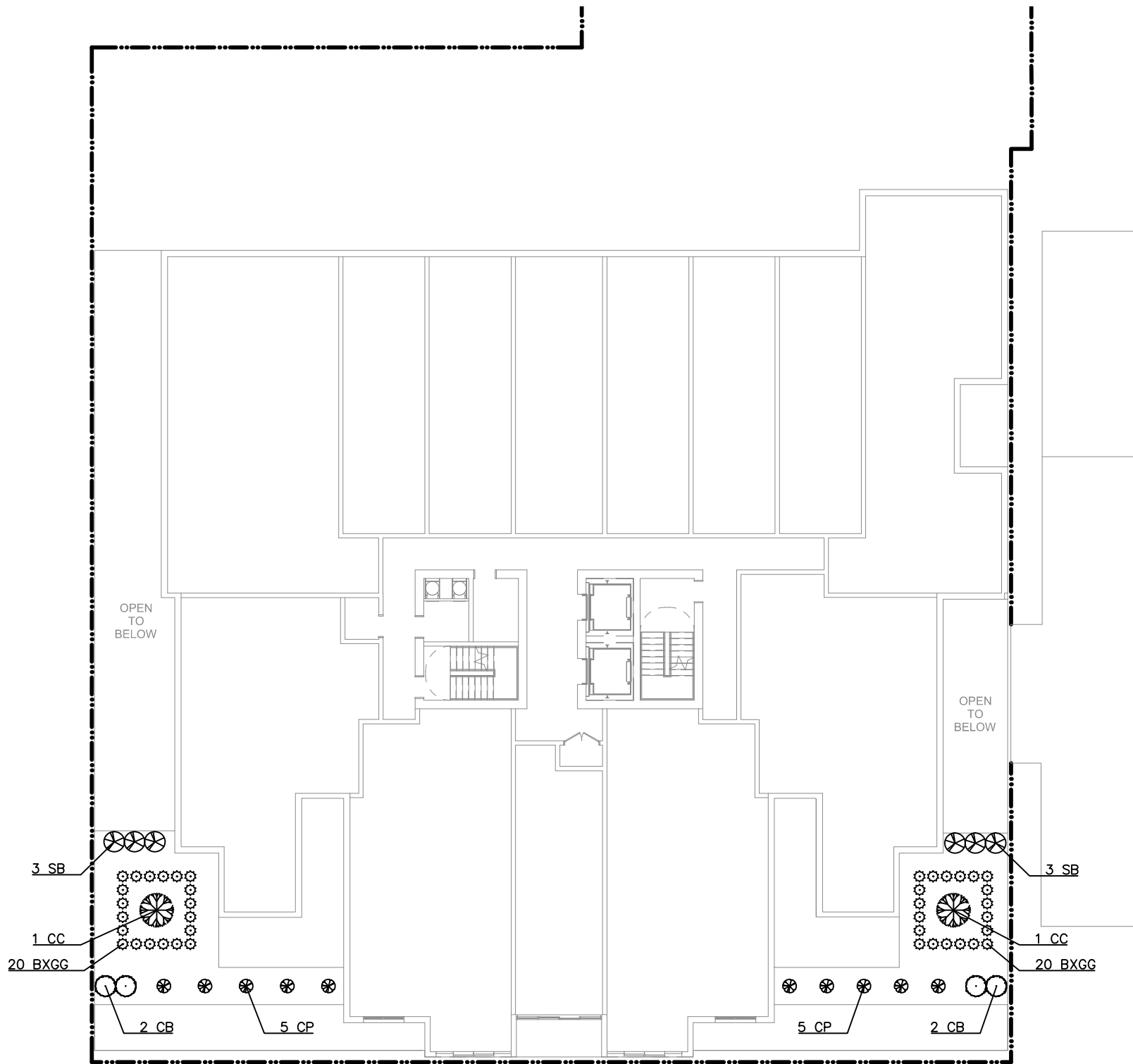
KEY	QTY	SPECIES	SIZE	SPECS
BXGG	53	Buxus 'Green Gem'	18-24" ht	B&B or Pot
		Green Gem Boxwood		
CA	13	Clethra ainifolia 'Ruby Spice'	24-30" ht	Cont
		Summersweet 'Ruby Spice'		
CB	4	Carpinus betulis 'Fastigiata'	2.5" cal	B&B
		Columnar European Hornbeam		
CC	2	Crataegus 'Crusader'	1.75" cal	B&B
CCM	5	Cercis canadensis 'Merlot'	5-6'	B&B
		Redbud 'Merlot'		
CP	10	Chamaecyparis pisifera 'Filifera Aurea Nana'	#5	Cont
		Threadleaf Falsecypress		
CS	14	Cornus sericea 'Kelsey'	24-30" ht	Cont
		Dwarf Redtwig		
JCC	32	Juniperus Calgary Carpet	#5	Cont
		Calgary Carpet Juniper		
JBP	2	Juniper chinensis 'Blue Point'	5'-6'	B&B
		Blue Point Upright Juniper		
KJ	6	Kerria japonica 'Pleniflora'	24-30" ht	Cont
		Double Japanese Kerria		
LL	16	Liriope muscari	#1	Cont
		Lilyturf Blue		
PA	7	Pennisetum alopecuroides 'Hameln'	#2	Cont
		Dwarf Fountain Grass		
PT	30	Pachysandra terminalis 'Green Carpet'	48 ct	Flat
		Pachysandra		
PV	24	Panicum virgatum 'Shenandoah'	#1	Cont
		Red Switch Grass		
SB	6	Spiraea x bumalda 'Goldflame'	#5	Cont
		Goldflame spiraea		
TO	37	Thuja occidentalis 'Nigra'	5' ht.	B&B
		Dark Green Arborvitae		



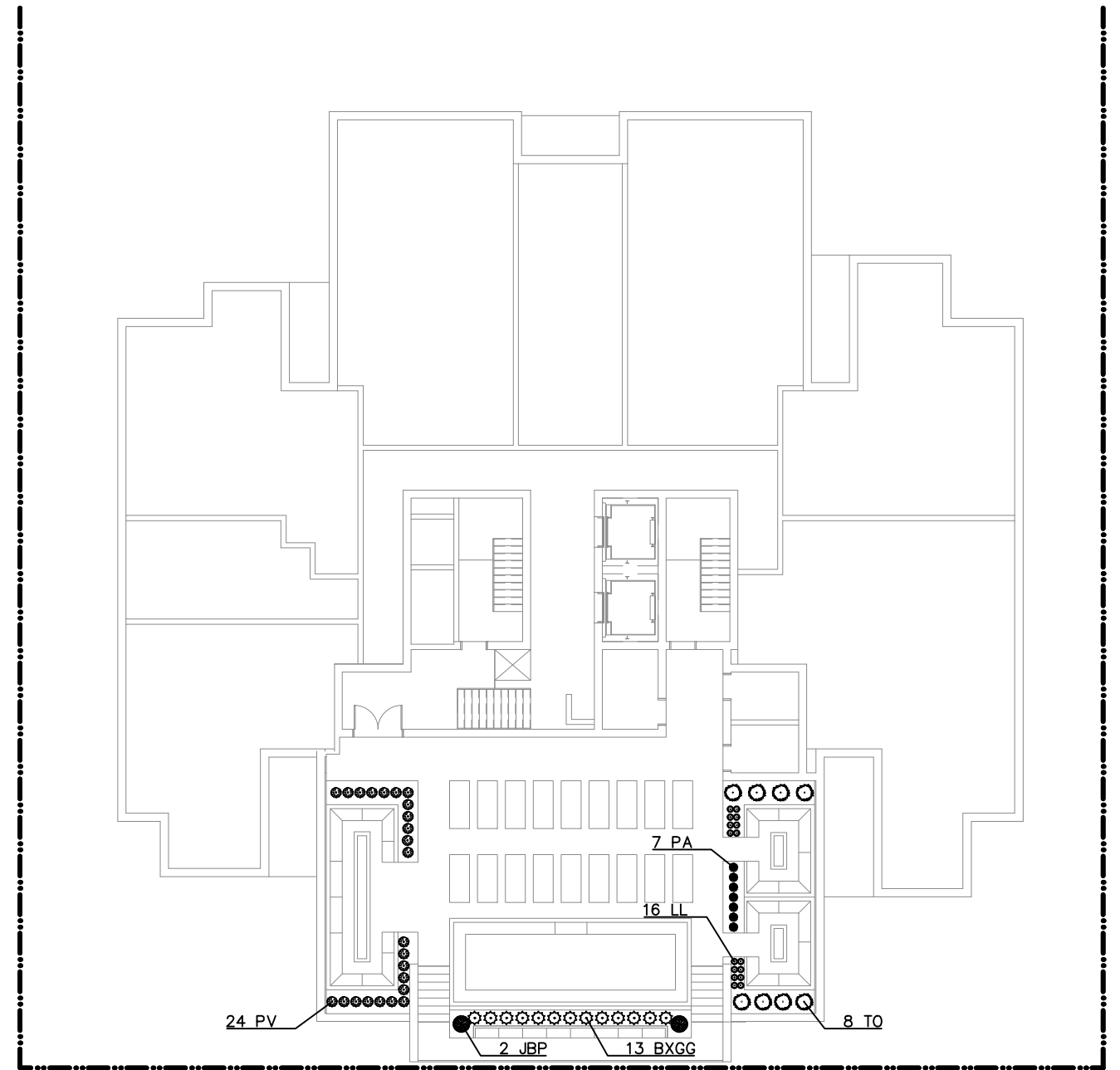
LEVEL 1



LEVEL 2



LEVEL 3



ROOF AMENITY DECK