

# ANN ARBOR SCHOOLS—THURSTON ELEMENTARY—PROP. EASEMENT

PROPOSED WATERMAIN EASEMENT ON PARCEL OF LAND LOCATED IN THE SW 1/4 OF SECTION 14 AND THE SE 1/4 OF SECTION 15, T2S, R6E, CITY OF ANN ARBOR, WASHTENAW COUNTY, MICHIGAN.

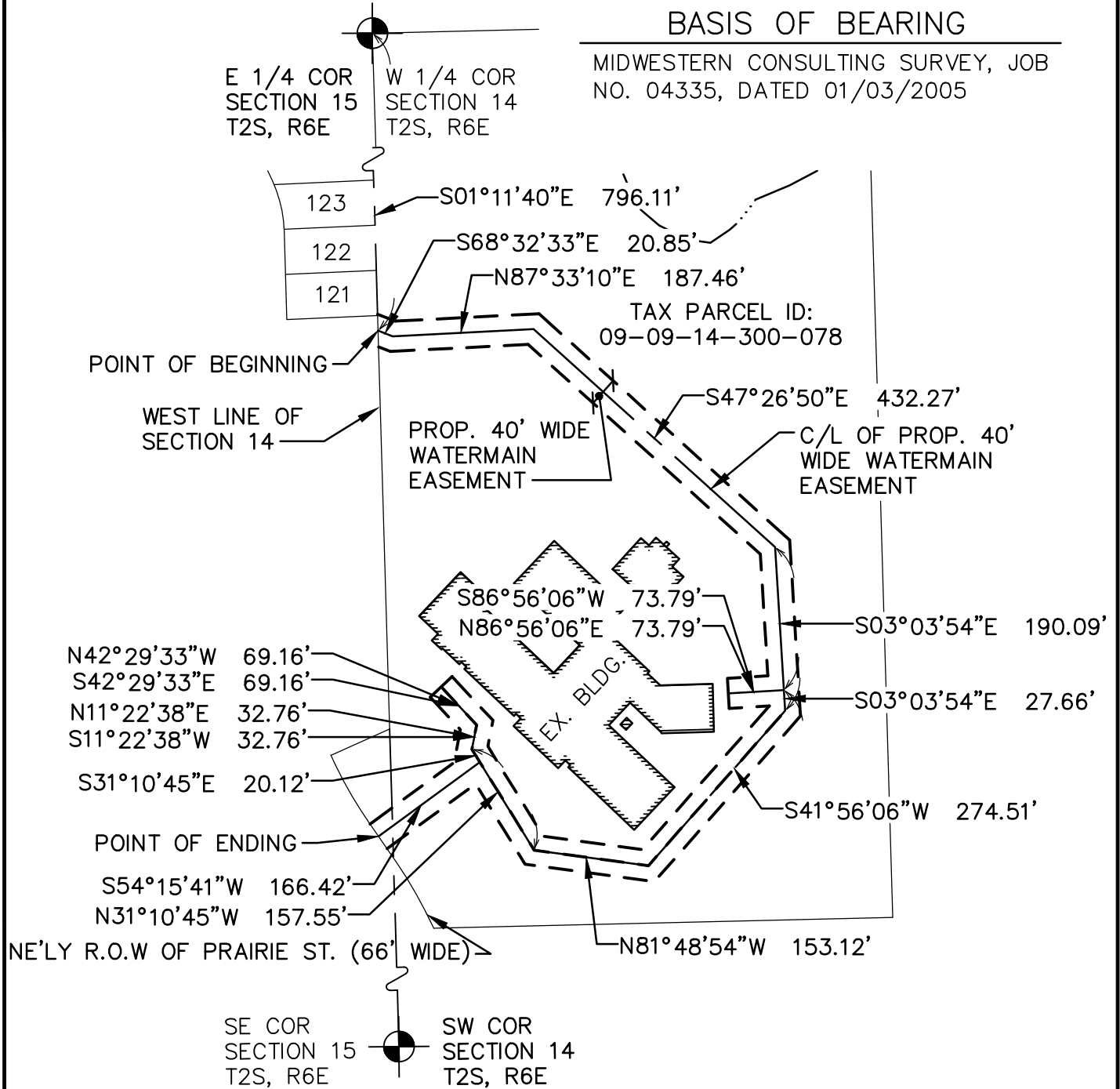


EXHIBIT A



M I D W E S T E R N  
C O N S U L T I N G

3815 Plaza Drive Ann Arbor, Michigan 48108  
(734) 995-0200 • www.midwesternconsulting.com  
Land Development • Land Survey • Institutional • Municipal  
Wireless Communications • Transportation • Landfill Services

THURSTON ELEMENTARY  
PROPOSED WATERMAIN EASEMENT

DATE: 08/22/18 JOB NO.: **17142**

SCALE: 1" = 200'



SHEET 2 OF 4