

I-94 EXPRESSWAY (WEST BOUND)
 (WIDTH VARIES - PUBLIC)

NO.	DATE	DESCRIPTION



CAUTION
 This drawing was prepared by the author or under the supervision of the professional engineer named herein and is not to be used for any other project without the written consent of the professional engineer named herein.

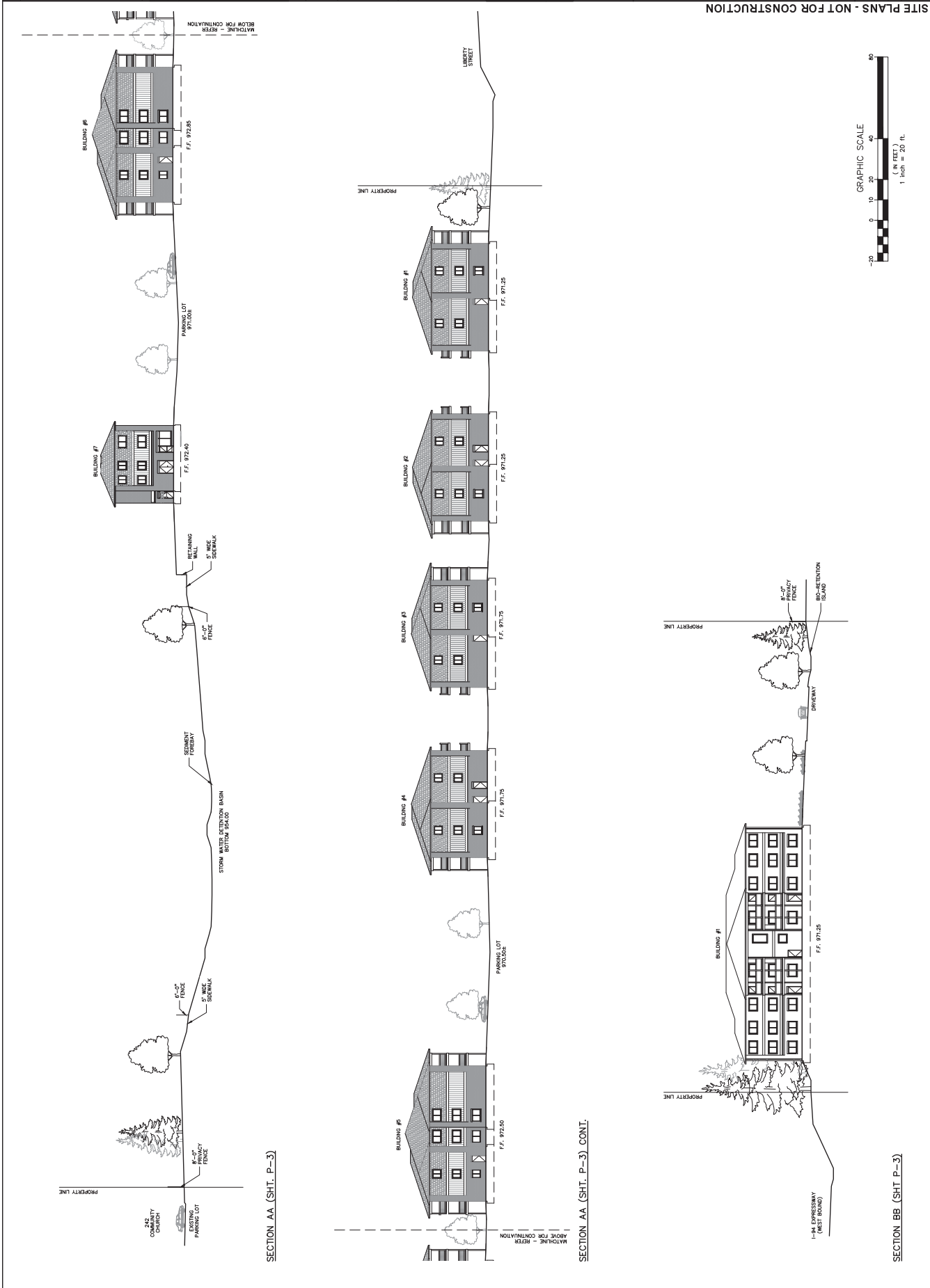
811
 Call before you dig!
 MISSOURI SYSTEM, INC.
 1-800-488-7171 www.811.org



PEA, Inc.
 7367 Niagara Way, Ste 115
 Ann Arbor, MI 48106
 Tel: 313-546-8953
 Fax: 313-546-8954
 www.pedesign.com

McKinley, Inc.
 520 N MAIN STREET, SUITE 200
 ANN ARBOR, MI 48104
 2628 W LIBERTY ST
 LIBERTY FLATS

DES: JCH/DN JHM SJL/RS P JL JC
 O PROJWA ISSUE DATE:
 JANUARY 21, 2015
 PEA JOB NO. 3105261
 SCALE: 1" = 20'
 DRAWING NUMBER:



NO.	DATE	REVISIONS

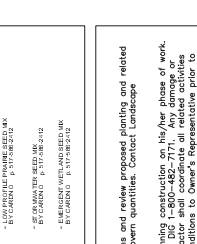


QUALITY CONTROL
 The contractor shall be responsible for the quality control of the work shown on these plans. The contractor shall submit a copy of the quality control plan to the architect for approval prior to construction.

3 FULL WORKING DAYS BEFORE YOU DIG CALL
 811
 Michigan One-Call
 1-800-487-3171 www.michiganonecall.com

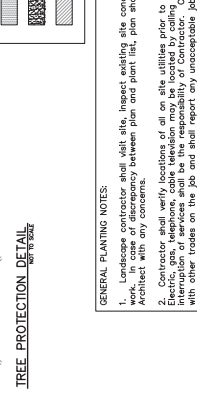
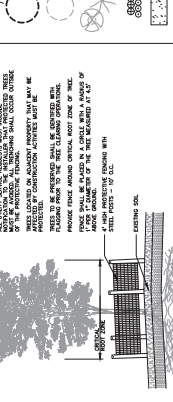
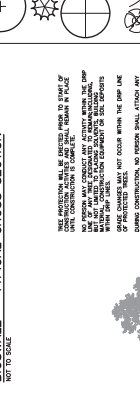
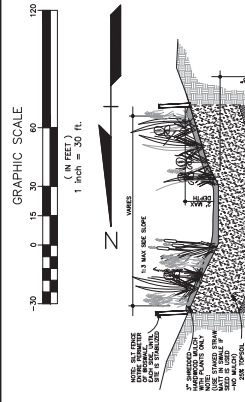
PEA, INC.
 73627 Nemoia Way, Ste 115
 2828 W LIBERTY ST
 FAYETTEVILLE, NC 28404
 (704) 786-6633
 www.pea.com

MCKINLEY, INC.
 520 N MAIN STREET, SUITE 200
 ANNA ARBOR, MI 48104
 (734) 761-3333
 www.mckinley.com



GENERAL PLANTING NOTES:
 1. All trees shall be planted with a minimum of 25% root ball volume and shall be protected with a minimum of 12 inches of mulch.
 2. All trees shall be planted with a minimum of 25% root ball volume and shall be protected with a minimum of 12 inches of mulch.
 3. All trees shall be planted with a minimum of 25% root ball volume and shall be protected with a minimum of 12 inches of mulch.

GENERAL PLANTING NOTES:
 4. All trees shall be planted with a minimum of 25% root ball volume and shall be protected with a minimum of 12 inches of mulch.
 5. All trees shall be planted with a minimum of 25% root ball volume and shall be protected with a minimum of 12 inches of mulch.
 6. All trees shall be planted with a minimum of 25% root ball volume and shall be protected with a minimum of 12 inches of mulch.



QUANTITY	KEY SYMBOL	COMMON NAME	SCIENTIFIC NAME	SIZE SPEC
3	ACE	Concolor Fir	Abies concolor	8" H, 8" B
2	072.5	Skyline Hollyhock	Gleditsia inermis 'Skyline'	2.5' Cal, 8" B
4	NS3	Black Gum	Nyssa sylvatica	3" Cal, 8" B
2	PA8	Norway Spruce	Picea abies	8" H, 8" B
6	PDB	Black Hills Spruce	Picea glauca 'Sprenger'	8" H, 8" B
2	QR2.5	Red Oak	Quercus rubra	2.5' Cal, 8" B
4	QR3	Red Oak	Quercus rubra	3" Cal, 8" B
1	UA2.5	Accolade Elm	Ulmus glaberrimus 'Accolade'	2.5' Cal, 8" B

QUANTITY	KEY SYMBOL	COMMON NAME	SCIENTIFIC NAME	SIZE SPEC
15	FIB	Northern Golf Forsythia	Forsythia x intermedia 'Northern Golf'	30" H, Cont.
30	9P3B	Miss Kim Lilac	Syringa patula 'Miss Kim'	30" H, Cont.

TREE PLANTING DETAIL
 NOT TO SCALE
 DO NOT PRUNE TERMINAL LEADER OR REMOVE BRANCHES UNTIL 3 YEARS AFTER PLANTING.
 REMOVE ALL LABELS, TAGS, TREE WRAP, AND ORNAMENTATION FROM TREE TRUNK AND BRANCHES.
 PRUNE UP TO 1/4" ABOVE BRANCHES TO BE REMOVED.
 PRUNE UP TO 1/4" ABOVE BRANCHES TO BE REMOVED.
 PRUNE UP TO 1/4" ABOVE BRANCHES TO BE REMOVED.

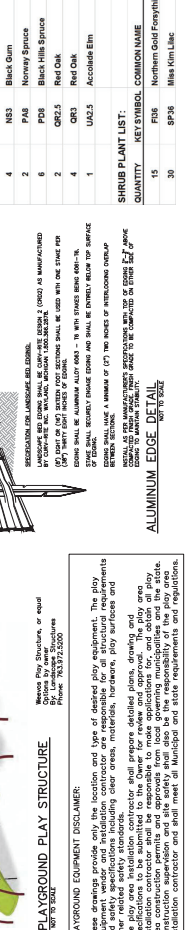
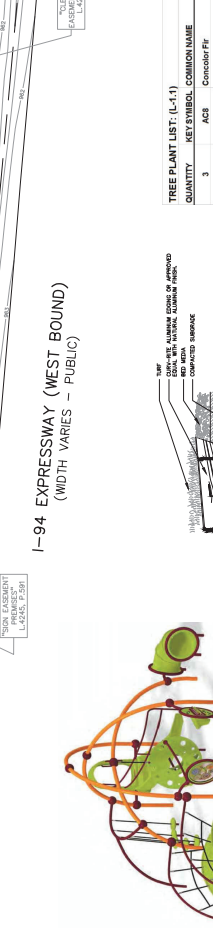
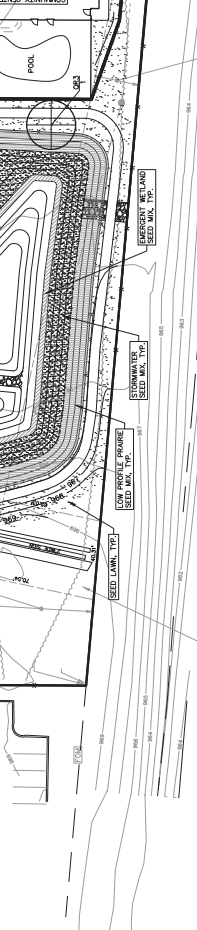
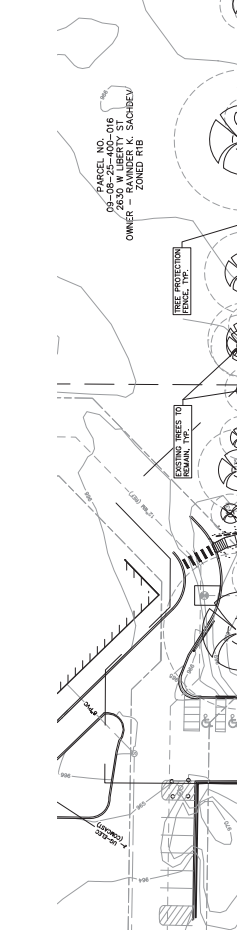
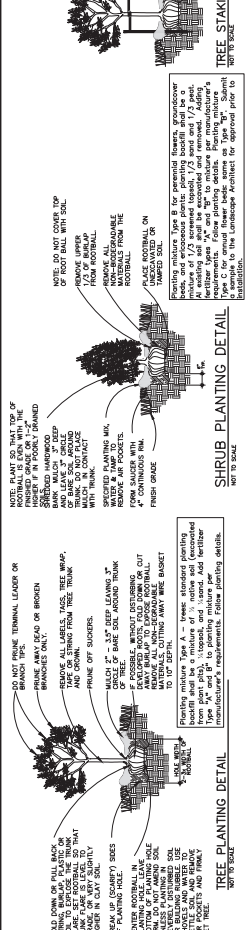
SHRUB PLANTING DETAIL
 NOT TO SCALE
 DO NOT PRUNE TERMINAL LEADER OR REMOVE BRANCHES UNTIL 3 YEARS AFTER PLANTING.
 REMOVE ALL LABELS, TAGS, TREE WRAP, AND ORNAMENTATION FROM TREE TRUNK AND BRANCHES.
 PRUNE UP TO 1/4" ABOVE BRANCHES TO BE REMOVED.
 PRUNE UP TO 1/4" ABOVE BRANCHES TO BE REMOVED.
 PRUNE UP TO 1/4" ABOVE BRANCHES TO BE REMOVED.

ALUMINUM EDGE DETAIL
 NOT TO SCALE
 DO NOT PRUNE TERMINAL LEADER OR REMOVE BRANCHES UNTIL 3 YEARS AFTER PLANTING.
 REMOVE ALL LABELS, TAGS, TREE WRAP, AND ORNAMENTATION FROM TREE TRUNK AND BRANCHES.
 PRUNE UP TO 1/4" ABOVE BRANCHES TO BE REMOVED.
 PRUNE UP TO 1/4" ABOVE BRANCHES TO BE REMOVED.
 PRUNE UP TO 1/4" ABOVE BRANCHES TO BE REMOVED.

PLAYGROUND PLAY STRUCTURE
 NOT TO SCALE
 DO NOT PRUNE TERMINAL LEADER OR REMOVE BRANCHES UNTIL 3 YEARS AFTER PLANTING.
 REMOVE ALL LABELS, TAGS, TREE WRAP, AND ORNAMENTATION FROM TREE TRUNK AND BRANCHES.
 PRUNE UP TO 1/4" ABOVE BRANCHES TO BE REMOVED.
 PRUNE UP TO 1/4" ABOVE BRANCHES TO BE REMOVED.
 PRUNE UP TO 1/4" ABOVE BRANCHES TO BE REMOVED.

PLAYGROUND EQUIPMENT DISCLAIMER:
 The manufacturer of the playground equipment shall be responsible for the safety of the equipment. The contractor shall be responsible for the installation and maintenance of the equipment.
 The manufacturer of the playground equipment shall be responsible for the safety of the equipment. The contractor shall be responsible for the installation and maintenance of the equipment.
 The manufacturer of the playground equipment shall be responsible for the safety of the equipment. The contractor shall be responsible for the installation and maintenance of the equipment.

PLAYGROUND EQUIPMENT DISCLAIMER:
 The manufacturer of the playground equipment shall be responsible for the safety of the equipment. The contractor shall be responsible for the installation and maintenance of the equipment.
 The manufacturer of the playground equipment shall be responsible for the safety of the equipment. The contractor shall be responsible for the installation and maintenance of the equipment.
 The manufacturer of the playground equipment shall be responsible for the safety of the equipment. The contractor shall be responsible for the installation and maintenance of the equipment.



**Cornerstone
Design
Inc**

320 N Main, Suite 200
Ann Arbor, MI 48106
734.265.7030 • Fax: 734.663.1800

Owner/Client:
McKinley

Project:
320 N Main, Suite 200
Ann Arbor, MI 48106
Tel: 734.789.8520

**Liberty
Flats
Apartments**

2658 W Liberty
Ann Arbor, MI

Reference:

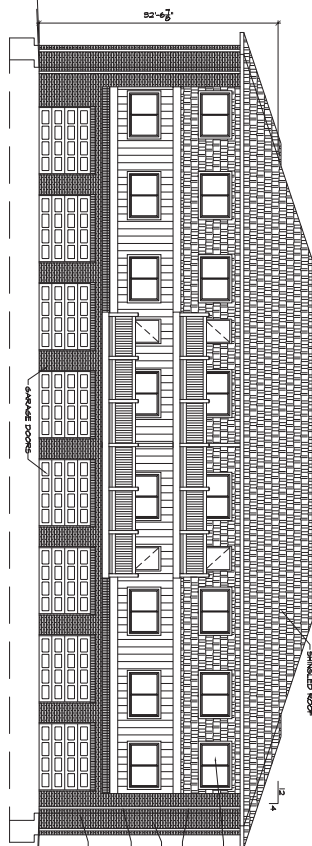
Date: 11/9/16
Drawn: DJE
Project No.: 201561
Scale: AS SHOWN
Approved: AS SHOWN

All drawings and designs copyright © 2016 Cornerstone Design, Inc. No reproduction or reuse allowed without permission.

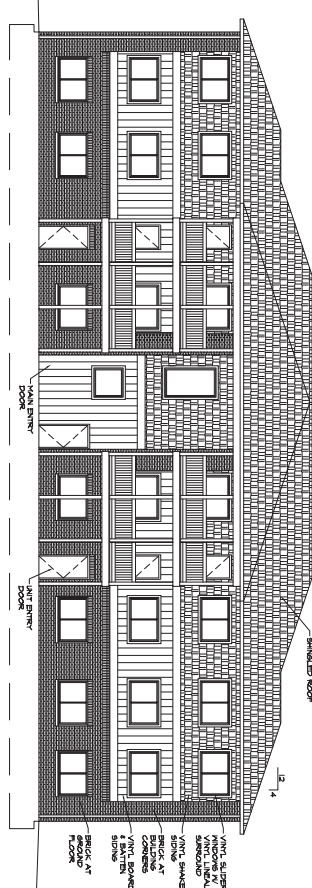
Drawing Title:
Buildings
1-4
Proposed
Exterior
Elevations

Prepared by Site
Plan Submitted: Not
for Construction

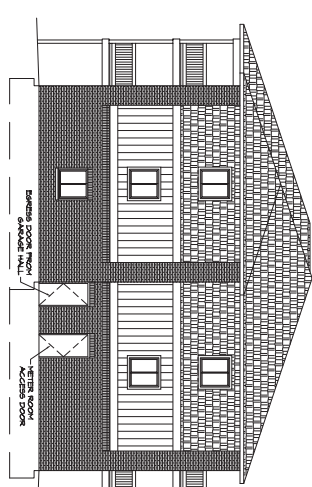
Sheet No.:
A-1



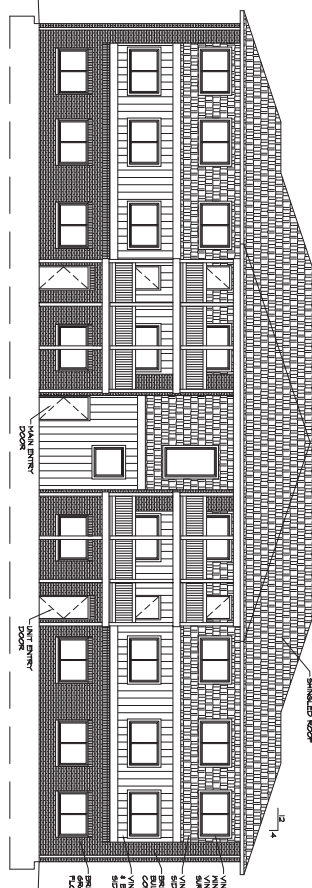
6 BUILDINGS 4 REAR ELEVATION 1/8" = 1'-0"



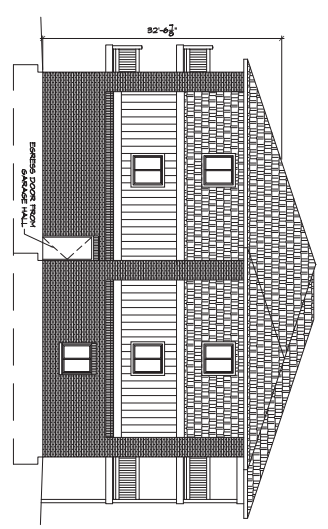
5 BUILDINGS 4 FRONT ELEVATION 1/8" = 1'-0"



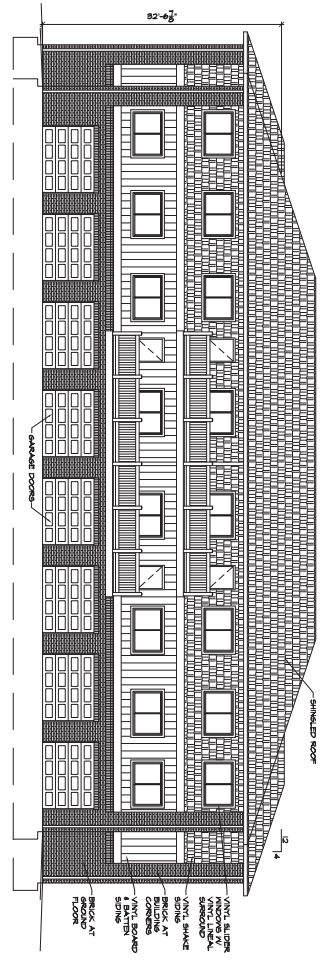
4 BUILDINGS 1-4 SIDE ELEV 1/8" = 1'-0"
FACING DRIVE & PARKING, FINISHED AS RENT



2 BUILDINGS 1-3 FRONT ELEVATION 1/8" = 1'-0"



3 BUILDINGS 1-4 SIDE ELEV 1/8" = 1'-0"
FACING N MAIN, FINISHED AS RENT



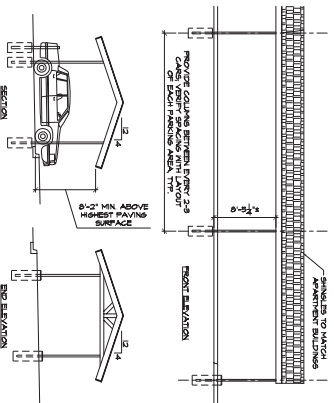
1 BUILDINGS 1-3 REAR ELEVATION 1/8" = 1'-0"

Date:	11/9/16
Drawn:	DLB
Project No.:	201161
Scale:	AS SHOWN
Approved:	AS SHOWN

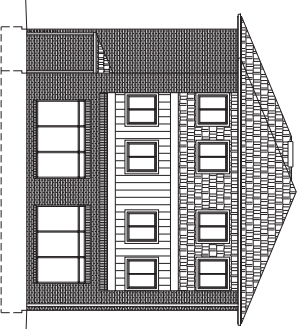
All drawings and design copyright
Cornerstone Design, Inc. All rights reserved.
No reproduction or reuse allowed
without permission.

Drawing Title:
Buildings
5-7
Proposed
Exterior
Elevations

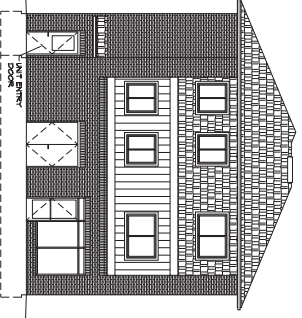
Prepared by Site
Plan Specialist, Not
For Construction



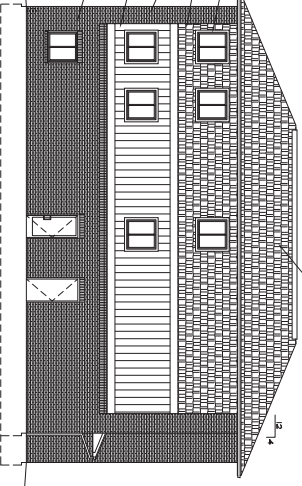
8 CARPORT ELEV 1/8" = 1'-0"



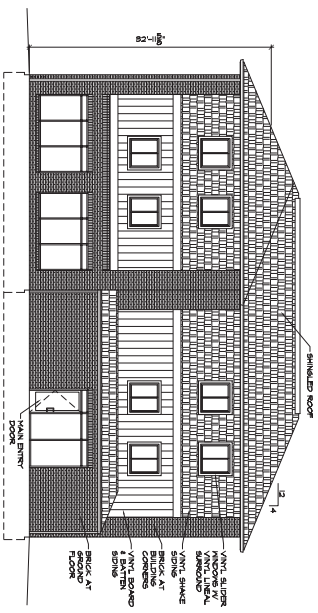
7 BLDG 7 EAST ELEV 1/8" = 1'-0"



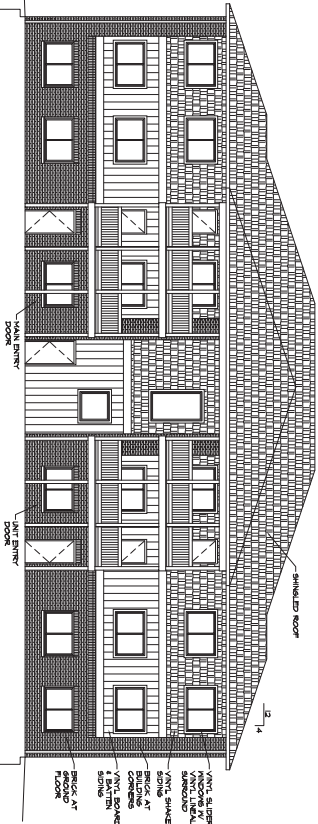
6 BLDG 7 WEST ELEV 1/8" = 1'-0"



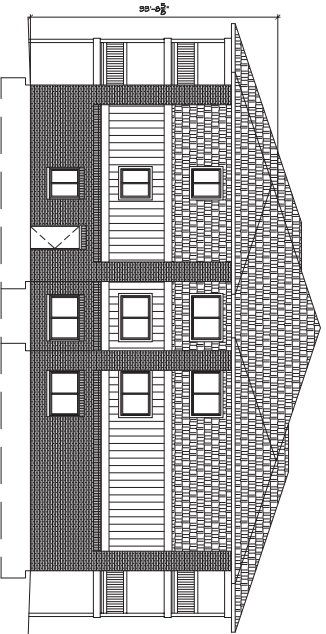
5 BUILDING 7 NORTH ELEVATION 1/8" = 1'-0"



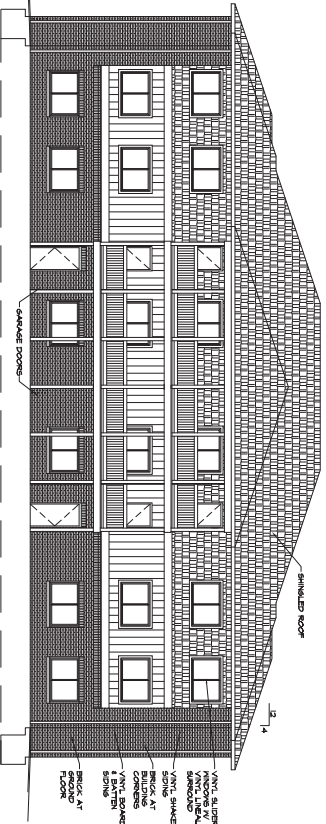
4 BUILDING 7 SOUTH ELEVATION 1/8" = 1'-0"



2 BUILDINGS 5-6 FRONT ELEVATION 1/8" = 1'-0"



3 BUILDINGS 5-6 SIDE ELEV 1/8" = 1'-0"



1 BUILDINGS 5-6 REAR ELEVATION 1/8" = 1'-0"





