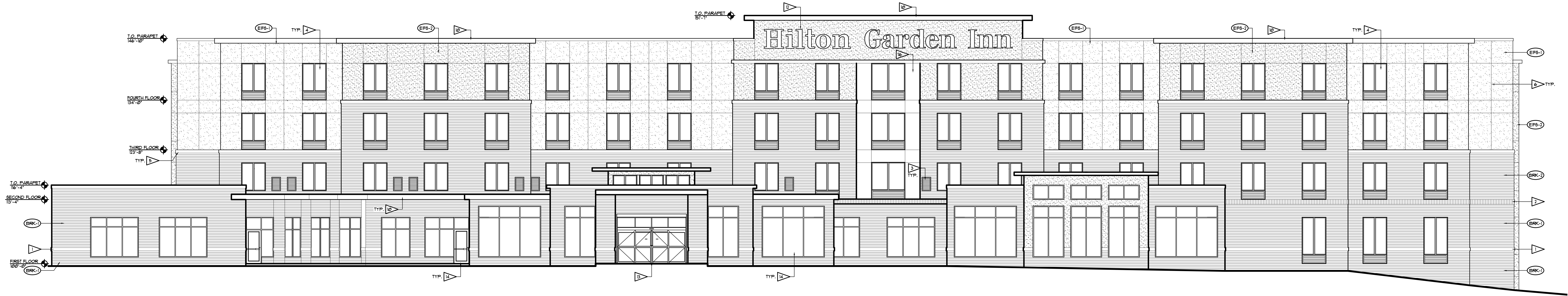




GARY BRINK & ASSOCIATES
ARCHITECTS
8401 EXCELSIOR DRIVE
MADISON, WI 53717
608-829-1750
608-829-3056 (FAX)

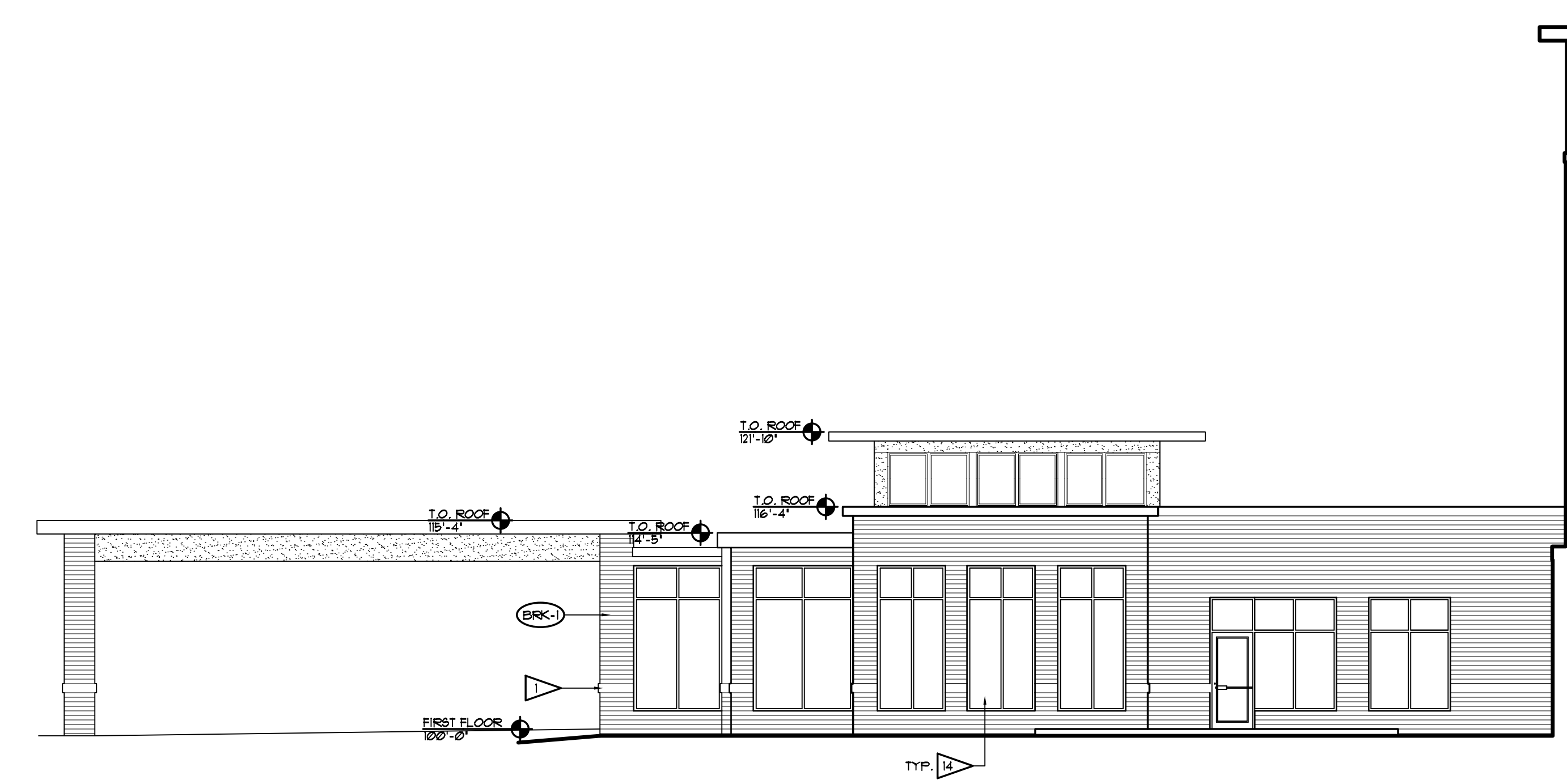


FRONT ELEVATION
1/8" = 1'-0"

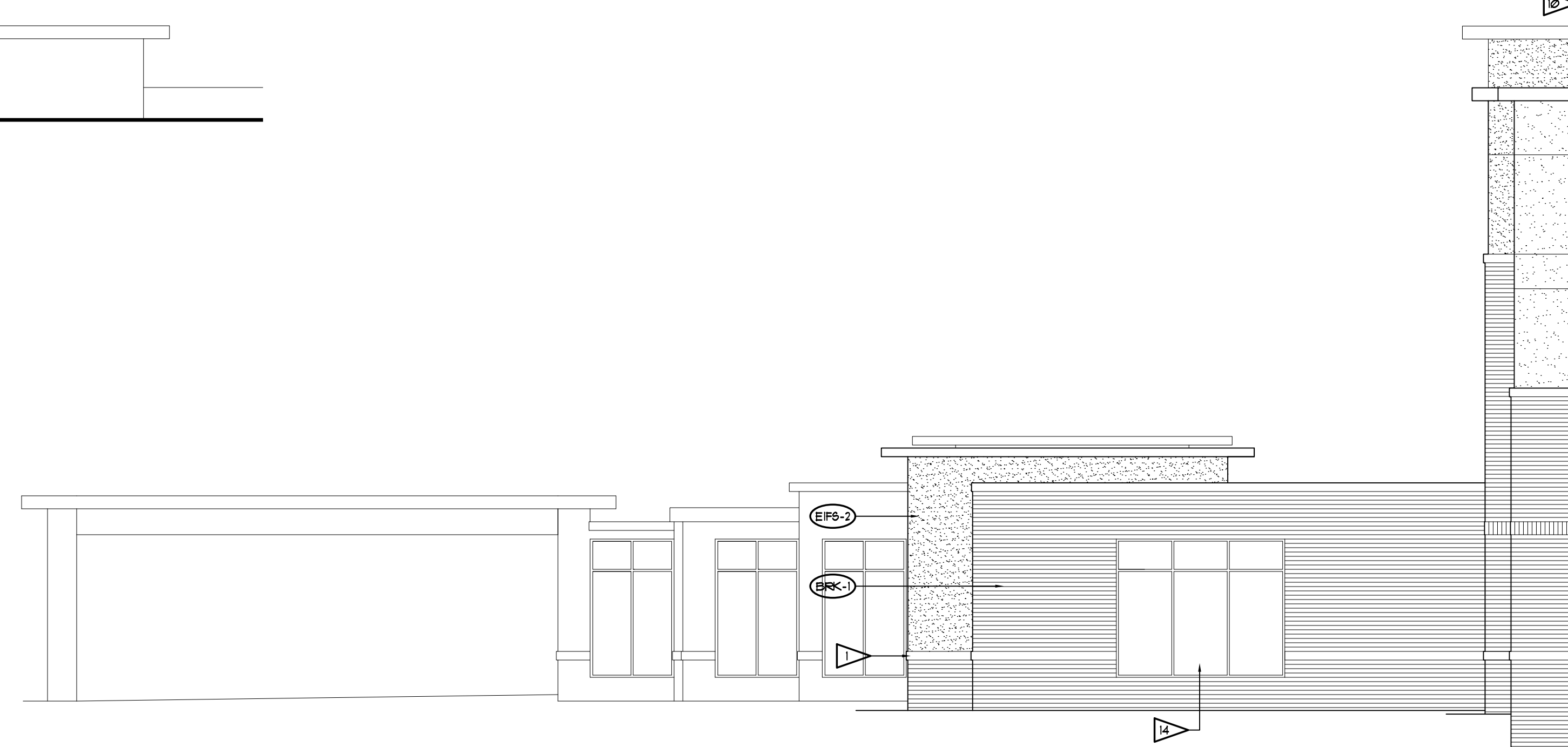
MATERIAL	COLOR	MANUFACTURER
UTILITY BRICK #1	GALFSTONE	GANNINGHAY BRICK CO.
UTILITY BRICK #2	WINSTONE	GANNINGHAY BRICK CO.
EPS #1	BW15	SHERWIN WILLIAMS
EPS #2	BW13	SHERWIN WILLIAMS
LOWER ACCENT BAND (8\"/>	2) COURSE GALFSTONE ROOFFACE	GANNINGHAY BRICK CO.
UPPER ACCENT BAND (14\"/>	SOLDIER COURSE GALFSTONE	GANNINGHAY BRICK CO.
COPING / FASCIA / FLUM PANELS	MAC-GLAD SILVER	PETERSON ALUMINUM
LOUVERS / GRILLES	TO MATCH WINDOW SYSTEM (INTEGRAL ONLY)	-
EXTERIOR HP DOOR & FRAMES	TO MATCH ADJACENT MATERIAL	-
WINDOW SYSTEMS	CLEAR ANODIZED ALUMINUM	-
GLASS - STOREFRONTS AND ALUMINUM WINDOW	CLEAR	-
SPRACHEL GLASS	1/8\"/>	HYRACON

- EXTERIOR ELEVATION NOTES**
- ALL BRICK TO BE UTILITY SIZE (4" x 4" x 8" NOMINAL) UNLESS NOTED OTHERWISE.
 - ALL EPS TO BE EPS-1 UNLESS NOTED OTHERWISE.
 - ALL EPS TO BE 1/2" THICK UNLESS OTHERWISE NOTED.
 - REFER TO PROJECT SPECIFICATIONS FOR ADDITIONAL INFORMATION.
 - ALL WINDOWS TO BE TYPE 'A' UNLESS NOTED OTHERWISE. REFER TO DRAWING A FOR WINDOW TYPES.
 - ALL LOUVERS AND HVAC GRILLES COLOR TO MATCH ADJACENT MATERIAL COLOR UNLESS NOTED OTHERWISE.
 - ALL LINTELS ON EXTERIOR TO BE GALVANIZED AND PAINTED TO MATCH EXTERIOR FINISH MATERIAL.
 - ALL WINDOW GLAZING TO BE TEmPERED UNLESS NOTED OTHERWISE.
 - REFER TO ELECTRICAL DRAWINGS FOR LOCATIONS OF BUILDING MOUNTED LIGHT FIXTURES.

- EXTERIOR ELEVATION KEY NOTES**
- 8" HIGH ROCK FACE ACCENT BAND
 - 12" HIGH UTILITY BRICK SOLDIER COURSE WITH 1/2" PROJECTION (BRICK #1)
 - VFAC LOUVER (TYP.)
 - FIXED ALUMINUM WINDOW SYSTEM W/ INTEGRAL PTAC LOUVER (TYP.)
 - 8" HIGH PRECAST ACCENT BAND
 - 1 1/2" V-JOINT IN EPS
 - EPS REVEAL JOINT (R/J)
 - EPS CONTROL JOINT (C/J)
 - SPRACHEL GLASS
 - 24 GA. PRE-FINISHED STL. FASCIA & GRAVEL STOP
 - 8" HP P.T. PLYWOOD BEHIND EPS IN SIGN FIELD (AREA SHOWN DASHED-V.F.)
 - INTERNALLY ILLUMINATED BUILDING SIGN. BUILDING SIGN TO BE FURNISHED AND INSTALLED BY OTHERS. CONTRACTOR TO PROVIDE POWER TO J-BOX.
 - SLIDING GLASS ENTRY DOOR
 - ALUMINUM STOREFRONT SYSTEM
 - FIXED ALUMINUM WINDOW
 - CEMENT BOARD PANEL
 - NOT USED
 - NOT USED
 - NOT USED
 - HP DOOR AND FRAME
 - NOT USED
 - NOT USED
 - NOT USED
 - NOT USED
 - NOT USED



HIDDEN RIGHT SIDE ELEVATION
1/8" = 1'-0"



RIGHT SIDE ELEVATION
1/8" = 1'-0"

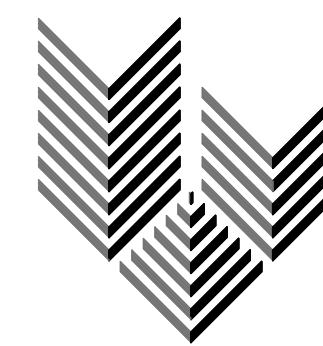
PROJECT: Hilton Garden Inn
Lot 12, 1401 Brianwood Circle Drive
Ann Arbor, Michigan 48108
CLIENT: Ann Arbor Lodging LS, LLC
C/O RAYMOND MANAGEMENT COMPANY
8333 GREENWAY BOULEVARD, SUITE 200 MADISON, WISCONSIN 53717

©2010 GARY BRINK & ASSOC.
Any duplication, reproduction, or use by any other party is prohibited unless prior written authorization is received from GARY BRINK & ASSOCIATES.

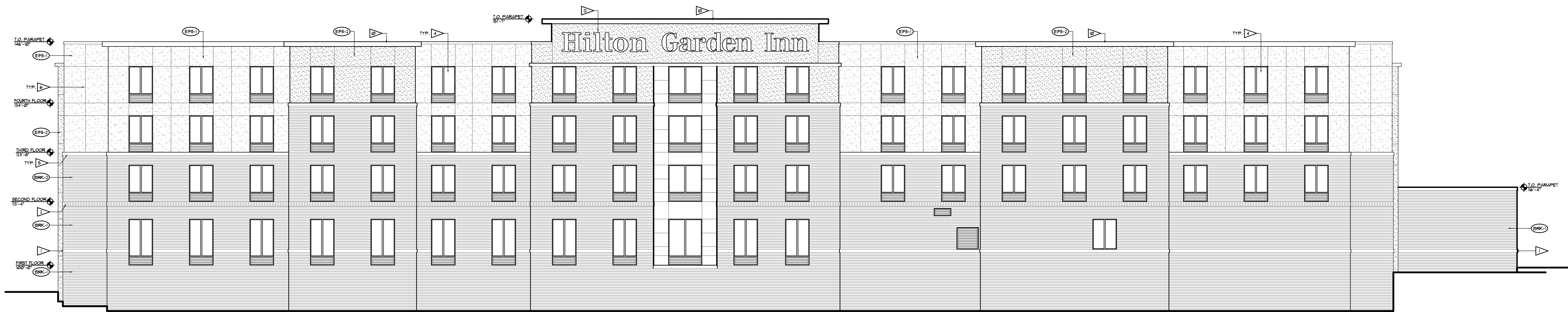
PROJECT: 200206
DRAWN BY:
DATE: 10/21/10
SCALE:

EXTERIOR ELEVATIONS

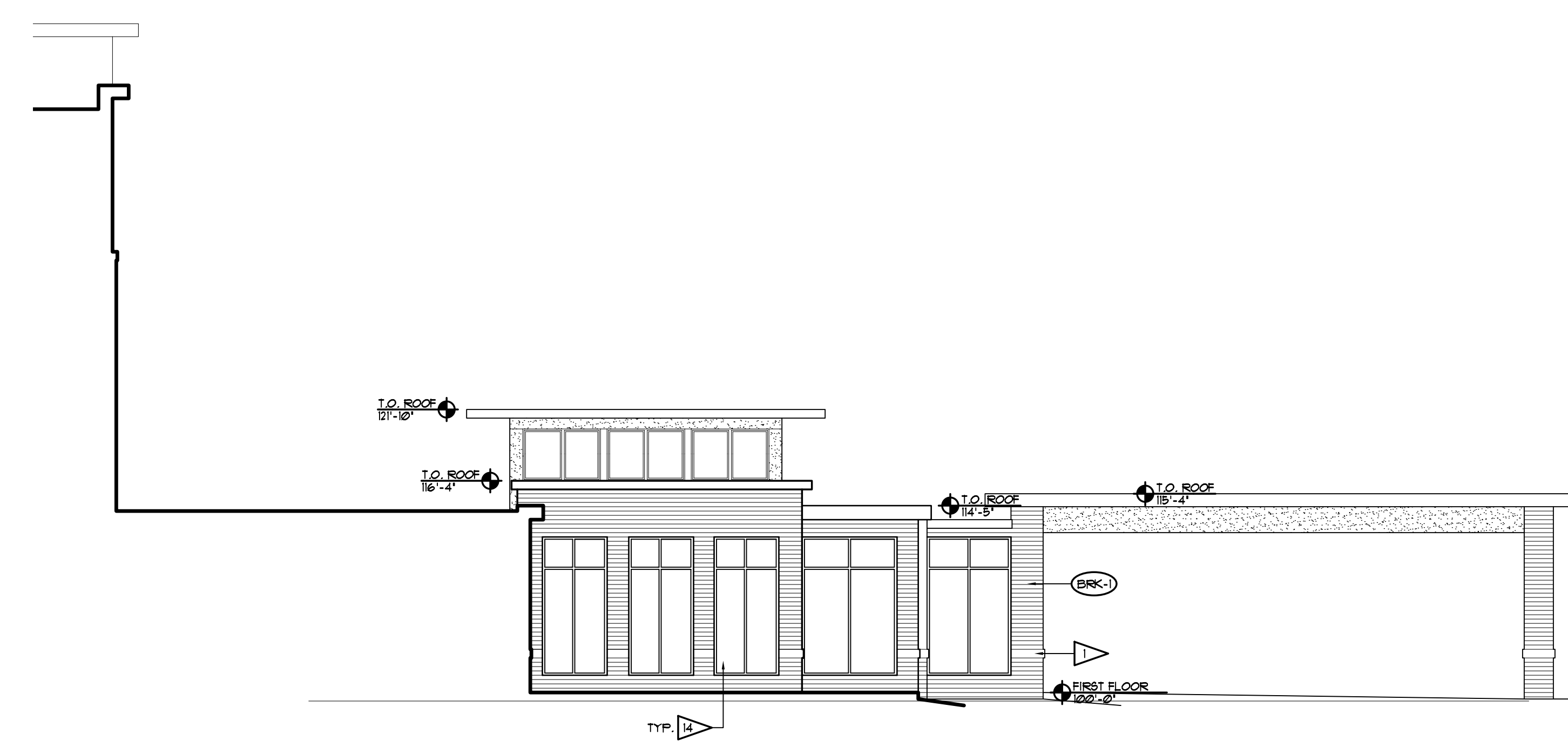
A6.01



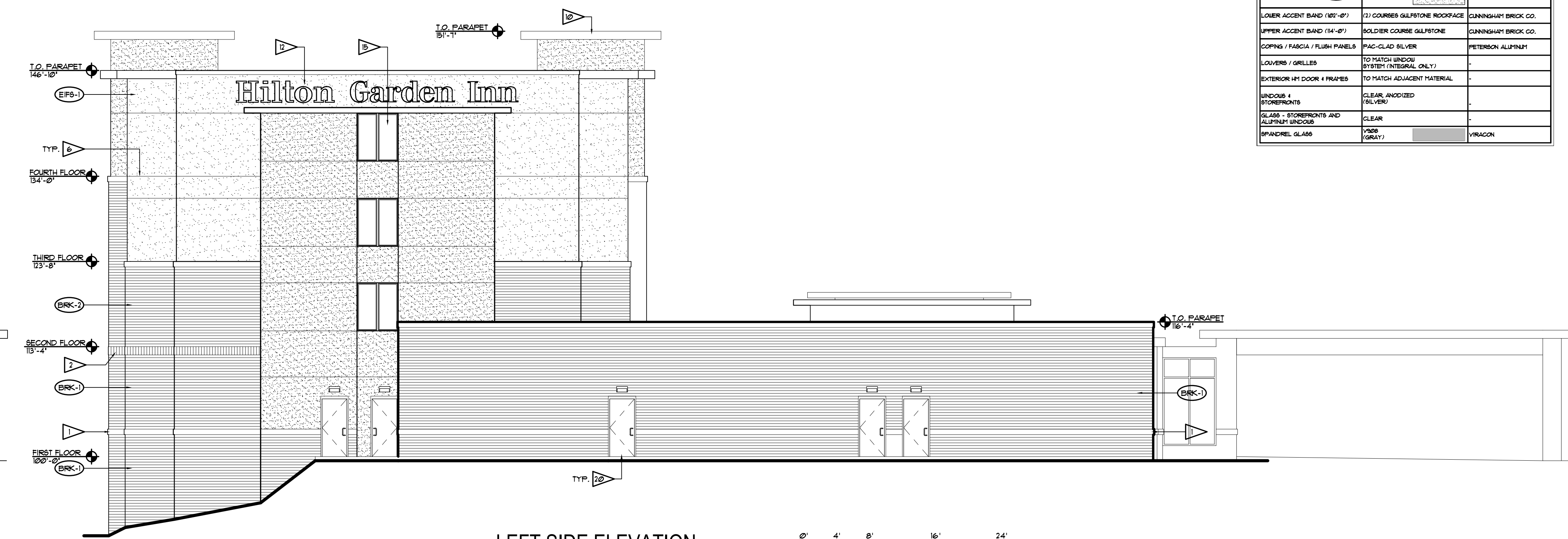
GARY BRINK & ASSOCIATES
ARCHITECTS
8401 EXCELSIOR DRIVE
MADISON, WI 53717
608-829-1750
608-829-3056 (FAX)



REAR ELEVATION
1/8" = 1'-0"



HIDDEN LEFT SIDE ELEVATION
1/8" = 1'-0"



LEFT SIDE ELEVATION
1/8" = 1'-0"

MATERIAL	COLOR	MANUFACTURER
UTILITY BRICK #1	SALTPHON	DUNNIGHT BRICK CO.
UTILITY BRICK #2	UNESTONE	DUNNIGHT BRICK CO.
EPF #1	BRK-1	SHERMAN ULLMANN
EPF #2	BRK-2	SHERMAN ULLMANN
LOWER ACCENT BAND (18"-4")	2 1/2 CORNER GALPSTONE ROOFKAP	DUNNIGHT BRICK CO.
UPPER ACCENT BAND (14"-4")	SOLDER COURSE GALPSTONE	DUNNIGHT BRICK CO.
COPING / FASCIA / FLUSH PANELS	PTAC-GLAZ SILVER	PETERSON ALUMINUM
LOUVERS / GRILLES	TO MATCH WINDOW SYSTEM (INTEGRAL ONLY)	-
EXTERIOR H1 DOOR & FRAMES	TO MATCH ADJACENT MATERIAL	-
WINDOWS - SYSTEMS	CLEAR, ANODIZED ALUMINUM	-
GLASS - STOREFRONTS AND ALUMINUM WINDOWS	CLEAR	-
SPANDREL GLASS	GRAY	VIACON

- EXTERIOR ELEVATION NOTES**
- ALL BRICK TO BE UTILITY SIZE (4" x 6" x 8" NOMINAL) UNLESS NOTED OTHERWISE.
 - ALL EPF TO BE EPF-1 UNLESS NOTED OTHERWISE.
 - ALL EPF TO BE 4 1/2" THICK UNLESS NOTED OTHERWISE.
 - REFER TO PROJECT SPECIFICATIONS FOR ADDITIONAL INFORMATION.
 - ALL WINDOWS TO BE TYPE 'A', UNLESS NOTED OTHERWISE. REFER TO DRAWING 'A' FOR WINDOW TYPES.
 - ALL LOUVERS AND HVAC GRILLES COLOR TO MATCH ADJACENT MATERIAL COLOR UNLESS NOTED OTHERWISE.
 - ALL WINDOW GLAZING TO BE TINTED UNLESS NOTED OTHERWISE.
 - REFER TO ELECTRICAL DRAWINGS FOR LOCATIONS OF BUILDING POINTED LIGHT FIXTURES.

- EXTERIOR ELEVATION KEY NOTES**
- 8" HIGH ROCK FACE ACCENT BAND
 - 12" HIGH UTILITY BRICK SOLDER COURSE WITH 1/2" PROJECTION (BRICK #2)
 - VTAC LOUVER (TYP.)
 - 8" HIGH PRECAST ACCENT BAND
 - 1 1/2" V-JOINT IN EPF
 - EPF REVEAL JOINT (R.J.)
 - EPF CONTROL JOINT (C.J.)
 - SPANDREL GLASS
 - 24 GA. PRE-FINISHED STL. FASCIA & GRILL STOP
 - 5/8" P.T. PLYWOOD BEHIND EPF IN SIGN FIELD (AREA SHOWN DASHED-V.I.F.)
 - INTERNALLY ILLUMINATED BUILDING SIGN. BUILDING SIGN TO BE PERMANENT AND INSTALLED BY OTHERS. CONTRACTOR TO PROVIDE POWER TO J-BOX.
 - SLIDING GLASS ENTRY DOOR
 - ALUMINUM STOREFRONT SYSTEM
 - FIXED ALUMINUM WINDOW
 - CEMENT BOARD PANEL
 - NOT USED
 - NOT USED
 - NOT USED
 - H1 DOOR AND FRAME
 - NOT USED
 - NOT USED
 - NOT USED
 - NOT USED

PROJECT: Hilton Garden Inn
Lot 12, 1401 Brianwood Circle Drive
Ann Arbor, Michigan 48108
CLIENT: Ann Arbor Lodging LS, LLC
C/O RAYMOND MANAGEMENT COMPANY
8333 GREENWAY BOULEVARD, SUITE 200, MADISON, WISCONSIN 53717

PROJECT: 200206
DATE: 10/21/10
SCALE:

EXTERIOR ELEVATIONS

A6.02