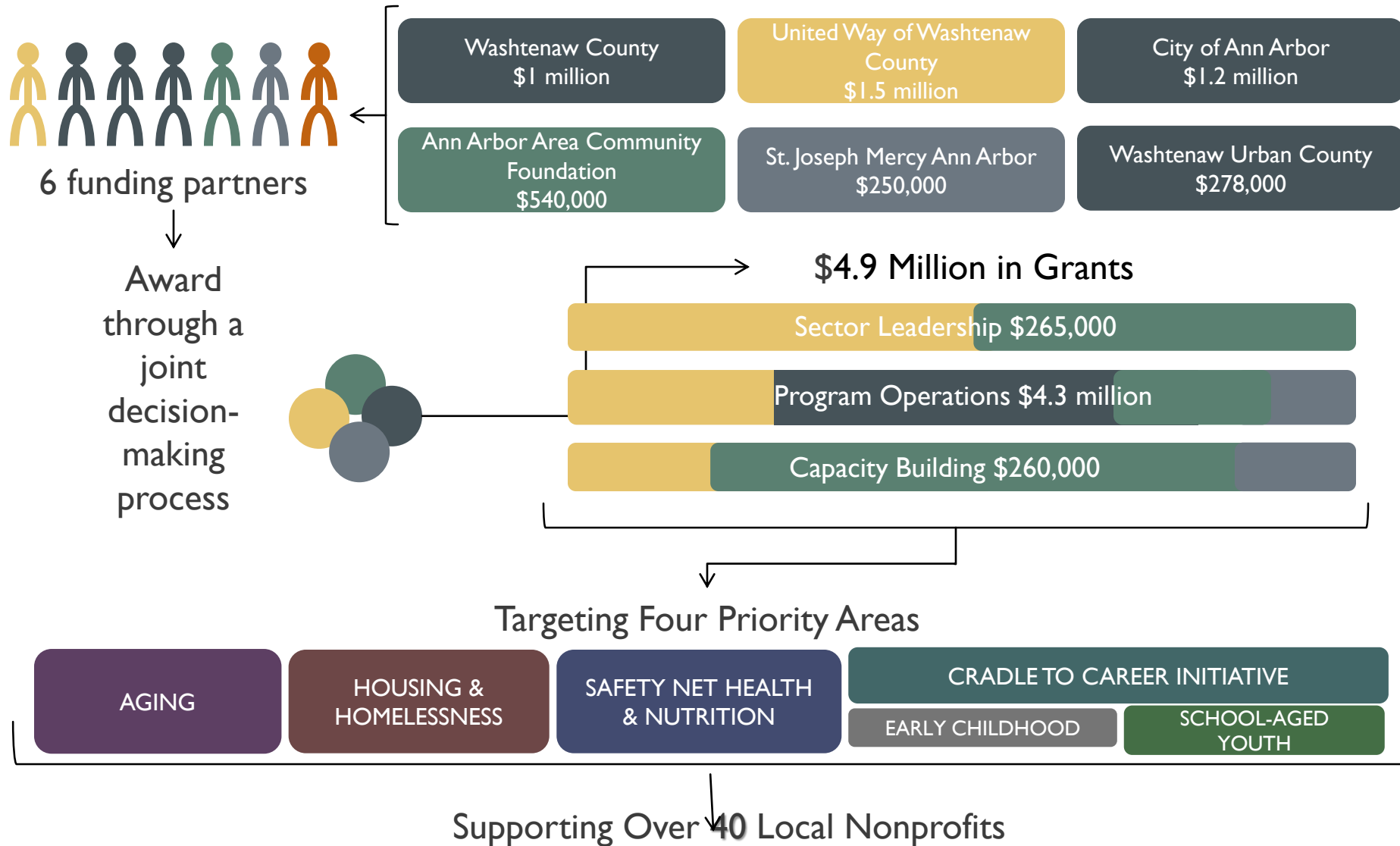

COORDINATED FUNDING PARTNERSHIP UPDATE

- Review of Coordinated Funding partnership and history
www.coordinatedfunders.org
- Update on current status
- Expected changes for 2021
- Opportunities going forward

A Coordinated Funding Approach to meet the needs of our community's most vulnerable



COORDINATING FUNDING – AREAS OF IMPACT

Aging

- Increase independent living for older adults

Cradle to Career

- Improve school readiness
- Increase high school graduation rate
- Increase youth physical & emotional safety

Housing & Homelessness

- Reduce the number of people experiencing homelessness

Safety Net Health & Nutrition

- Increase access to health services & resources
- Decrease food insecurity

DASHBOARD HIGHLIGHTS- EARLY CHILDHOOD



Washtenaw Coordinated Funders

Early Childhood

Our Community Outcome: Increase the developmental readiness of children with low incomes (ages 0-5) so they can succeed in school at the time of school entry.

COMMUNITY TRENDS

- The number of economically disadvantaged children participating in early learning programs increased between 2011 and 2015.
- The poverty rate for children under 5 in Washtenaw County is 19.6%; HOWEVER the poverty rate for African-American children is 58% and 29% for Hispanic children.
- The percentage of children meeting socio-emotional expectations (based on the Kindergarten Entry Assessment piloted in Ypsilanti Township) increased by more than 50% between 2014 and 2015.
- The number of babies born on Medicaid has decreased from 1,155 to 921 annually between 2010 and 2015.
- Substantiated victims of abuse/neglect, ages 0-8 has risen from 443 in FY11 to 750 in FY16.

ECONOMICALLY DISADVANTAGED CHILDREN IN WASHTENAW COUNTY

Babies Born on Medicaid



Participation in Early Childhood Programs



Source: Washtenaw County, Michigan Department of Health and Human Services Dashboard

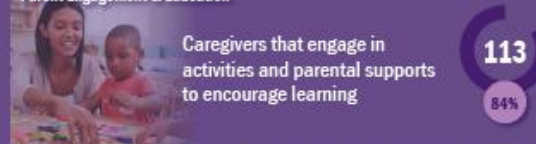
Community Dashboard

JULY 2018-JUNE 2019

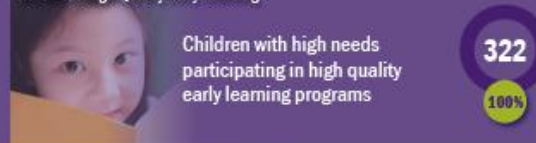
PROGRAM LEVEL OUTCOMES

This section illustrates the total number of participants who reported achieving specified outcomes, and the corresponding percentage of achievement for all participants working on that outcome.

Parent Engagement & Education



Access to High-Quality Early Learning



Strengthen Parenting & Home Environments



POPULATIONS SERVED ACROSS ALL PRIORITY AREAS

Below are the boundary- and priority area-spanning populations that WCF are prioritizing across the funding portfolio. Percentages are estimates based on data from programs selecting to track the information—they do not represent totals for all WCF participants.

Priority Population	Goal	% Served
Individuals and families residing in census tracts with a low or very low opportunity score rating on the Washtenaw Opportunity Index	25-50%	74%
Families with newborns enrolled in Medicaid and/or families with children enrolled in MIChild	20-35%	24%
Homebased centers	20-35%	30%
Individuals and families experiencing chronic homelessness	15-30%	13%
Individuals and families residing in the zip codes of 48157 and 48158	70-75%	46%
Individuals and families with annual incomes at or below 200% of the Federal Poverty Level	75-85%	90%

DEMOGRAPHIC DATA

Number of Early Childhood Participants by ZIP Code (FIGURE 1)

Total served: 715

Map reflects participants served by ZIP Code. Washtenaw County ZIP codes are represented.



Breakdown by INCOME



Breakdown by RACE



Breakdown by GENDER



Washtenaw Coordinated Funders (WCF) is meeting the needs of our community's most vulnerable in four priority areas through three funding components intended to: Support human services programming; Build nonprofit capacity; Foster community collaboration and systems-level change. WCF includes the following partners: An Arbor Area Community Foundation (AACF); Office of Community and Economic Development (OCED), representing Washtenaw County, Washtenaw County and the City of Ann Arbor; Ann Arbor Area Community Foundation (AACF); and the City of Ann Arbor. For more information, visit our website: coordinatedfunders.org.

DASHBOARD HIGHLIGHTS- SCHOOL AGED YOUTH

Washtenaw Coordinated Funders

School-Aged Youth: Graduation

Our Community Outcome: Increase the high school graduation rate of economically disadvantaged youth.

COMMUNITY TRENDS

- Graduation rates overall, and among economically disadvantaged youth in particular, are higher than the statewide rates.
- The average dropout rate last year was about 5.5%, lower than statewide rate of 9%.
- There was increased engagement with best practices and graduation rates have improved (overall and youth with low incomes).
- Despite this success there has been an overall increase in absenteeism among economically disadvantaged youth.

ATTENDANCE & GRADUATION OF WASHTENAW COUNTY SCHOOL-AGED YOUTH

5-Year Graduation Rate for 3 School Districts (%)

Absenteeism

Legend for Absenteeism: Economically Disadvantaged (Blue), All Students (Green)

Legend for Graduation/Dropout: ID Students - Statewide (Orange), ID Students - Washtenaw (Green), Non-ID Students - Statewide (Light Green), Non-ID Students - Washtenaw (Dark Green), ID - Statewide Economically Disadvantaged (Light Orange)

Source: 2017 Report Card published by the Washtenaw Alliance for Children and Youth; MI School Data; Center for Educational Performance and Information

Community Dashboard

JULY 2018-JUNE 2019

PROGRAM LEVEL OUTCOMES

This section illustrates the total number of participants who reported achieving specified outcomes, and the corresponding percentage of achievement for all participants working on that outcome.*

Intervention Programming to Foster Literacy, Academic Success, and School Attendance and Engagement

- Youth who increased school attendance: 136 (41%)
- Youth who maintained school attendance: 223 (56%)
- Youth who are proficient in core academic subjects (math, ELA, science and/or social studies): 205 (86%)

*As measured by PowerSchool or report cards.

DEMOGRAPHIC DATA

Number of SAY-Grad Participants by ZIP Code (FIGURE 1)

Total served: 444

Map reflects participants served for which Washtenaw County ZIP codes were reported.

Breakdown by INCOME

Income of all WCF Participants (FIGURE 2A): 48% >200% Full Poverty, 48% 100-200% Full Poverty, 5% Unknown

Income of SAY-Grad Participants (FY19) (FIGURE 2B): 90% >200% Full Poverty, 10% 100-200% Full Poverty

Breakdown by RACE

Race of Washtenaw County Residents (FIGURE 3A): 77% White, 10% Black/African American, 8% Hispanic/Latino, 4% Other

Race of SAY-Grad Participants (FY19) (FIGURE 3B): 88.4% White, 23.5% Black/African American, 1.5% Hispanic/Latino, 0.5% Other

*Source: ACS 2017

Washtenaw Coordinated Funders (WCF) is meeting the needs of our community's most vulnerable in four priority areas through three funding components: Extended Day Support, Career and Technical Education, and Support for Human Services. WCF includes the following partners: Ann Arbor University Foundation (AAUF); Office of Community and Economic Development (OCED); Washtenaw County; Washtenaw County and the City of Farmington Hills; Washtenaw County (WCHC); DePaul Joseph Mercy Ann Arbor (DJMA). For more information, visit our website: coordinatedfunders.org.

POPULATIONS SERVED ACROSS ALL PRIORITY AREAS

Below are the boundary- and priority area- spanning populations that WCF are prioritizing across the funding portfolio. Percentages are estimates based on data from programs electing to track the information—they do not represent totals for all WCF participants.

Priority Population	Goal	% Served
Individuals and families residing in census tracts with a low or very low opportunity score rating on the Washtenaw Opportunity Index	25-50%	74%
Families with newborns enrolled in Medicaid and/or families with children enrolled in MICHild	20-35%	24%
Homebound seniors	20-35%	30%
Individuals and families experiencing chronic homelessness	15-30%	13%
Individuals and families residing in the zip codes of 48197 and 48198	70-75%	46%
Individuals and families with annual income at or below 200% of the Federal Poverty Level	75-85%	90%

Legend: Above goal (Green), 100% goal (Yellow), Slightly below goal (Orange), Not below goal (Red)

DASHBOARD HIGHLIGHTS- SCHOOL AGED YOUTH: SAFETY



Our Community Outcome: Increase the physical and emotional safety of economically disadvantaged children and youth in their homes, schools, and communities.

COMMUNITY TRENDS

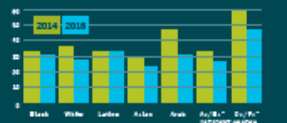
- The percentage of youth who report feeling safe at home has increased slightly since 2010, from 37% to 43%. The rate of 43% has held steady since 2012.
- The statewide rates of child abuse in Michigan have gone up slightly over time, to 17% in 2015.

from 11% in 2011. Washenaw rates have remained lower overall than statewide rates, but have also increased slightly from 9% in 2011 to 11% in 2015.

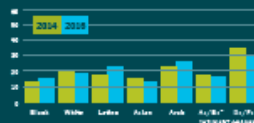
In 2015, only 13 percent of high school students reported being picked on or bullied by another student, while 14 percent reported witnessing an act of bullying.

SAFETY OF WASHTENAW COUNTY SCHOOL-AGED YOUTH

7th Grade Youth Who Reported Being Bullied on School Property in the Past 12 Months



9th & 11th Grade Youth Who Reported Being Bullied on School Property in the Past 12 Months



School Safety of Middle and High School Students 2014-2016

All Middle and High School Students	Points of Concern (Student Type)		Rate
	6-8th Grade	9-12th Grade	
Felt Unsafe/Very Unsafe in School	4%	4%	10%
Bullied on School Property in Past Year	25%	18%	40%
Witnessed in School Physical Abuse in Past Year	52%	49%	68%

Confirmed Victims of Abuse and Neglect Age 0-17, 2018



Community Dashboard

JULY 2018-JUNE 2019

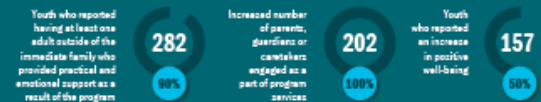
PROGRAM LEVEL OUTCOMES

This section illustrates the total number of participants who reported achieving specified outcomes, and the corresponding percentage of achievement for all participants working on that outcome.

Out-of-School Programs



Programs that Facilitate Improved Youth-Adult Relationships



On-Site School Programs



POPULATIONS SERVED ACROSS ALL PRIORITY AREAS

Below are the boundary- and priority area- spanning populations that WCF are prioritizing across the funding portfolio. Percentages are estimates based on data from programs seeking to track the information—they do not represent totals for all WCF participants.

Priority Population	Goal	% Served
Individuals and families residing in census tracts with a low or very low opportunity score rating on the Washenaw Opportunity Index	25-50%	74%
Families with newborns enrolled in Medicaid and/or families with children enrolled in Medicaid	20-35%	24%
Homebound seniors	20-35%	28%
Individuals and families experiencing chronic homelessness	15-30%	13%
Individuals and families residing in the zip codes of 48197 and 48198	70-75%	46%
Individuals and families with annual income at or below 200% of the Federal Poverty Level	75-85%	90%

DEMOGRAPHIC DATA

Number of SAY-Safety Participants by ZIP Code (FIGURE 1)



Breakdown by INCOME



Breakdown by RACE



Washenaw Coordinated Funders (WCF) is meeting the needs of our community's most vulnerable in four priority areas through three funding components intended to: Support human services programming; Build nonprofit capacity; Foster community collaboration and systems-level change. WCF includes the following partners: Ann Arbor Area Community Foundation (AAACF); Office of Community and Economic Development (OCED), representing Washtenaw County, Washtenaw County and the City of Ann Arbor; United Way of Washtenaw County (UWWC); and Joseph Henry Ann Arbor (JHAA). For more information, visit our website: coordinatedfunders.org.

DASHBOARD HIGHLIGHTS- SAFETY NET HEALTH/ NUTRITION



Washtenaw Coordinated Funders

Safety Net Health

Our Community Outcome: Increase access to health services and resources for people with low incomes.

COMMUNITY TRENDS

- The rate of uninsured has dropped from nine percent in 2010 to four percent in 2015.
- Despite a slight decline between 2010-2015, a majority of people with low incomes report having a personal doctor or healthcare provider.

- Public data also show that since start of Affordable Care Act (ACA) health exchanges, there has been a steady increase in enrollment the Healthy Michigan Plan and other marketplace plans.
- Dental care data was only available for 2010 and showed that 53 percent of people with low incomes had dental insurance at the time.

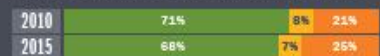
SAFETY NET HEALTH OF THE ECONOMICALLY DISADVANTAGED IN WASHTENAW COUNTY

Health Care Coverage Enrollment by Type



Source: Washtenaw County, 2010; Washtenaw County, 2011-2015; Health and Human Services, 2010-2015; Health and Human Services, 2010-2015; Health and Human Services, 2010-2015.

People with Low Incomes: Responses to the Question, "Do You Have a Personal Doctor/Primary Healthcare Provider?"



Percent of Uninsured Residents



Source: Washtenaw County, Healthcare Community Survey, 2-Year Estimates

Community Dashboard

JULY 2018 - JUNE 2019

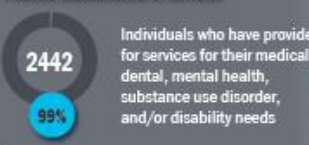
PROGRAM LEVEL OUTCOMES

This section illustrates the total number of participants who reported achieving specified outcomes, and the corresponding percentage of achievement for all participants working on that outcome.

Benefits Advocacy and Referral Coordination



Positive Maintenance of Services



New or Expanded Services



POPULATIONS SERVED ACROSS ALL PRIORITY AREAS

Below are the boundary- and priority area-spanning populations that WCF are prioritizing across the funding periods. Percentages are estimates based on data from programs willing to track the information—they do not represent totals for all WCF participants.

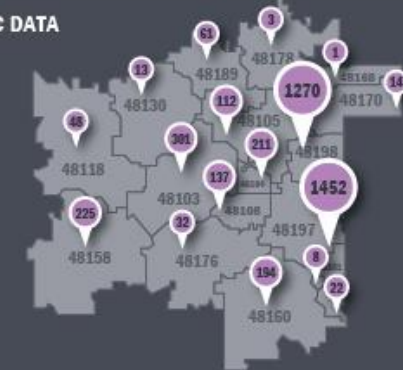
Priority Population	Goal	% Served
Individuals and families residing in census tracts with a low or very low opportunity score rating on the Washtenaw Opportunity Index	25-50%	74%
Families with newborns enrolled in Medicaid and/or families with children enrolled in MICHild	20-35%	24%
Homebound seniors	20-35%	30%
Individuals and families experiencing chronic homelessness	15-30%	13%
Individuals and families residing in the zip codes of 48137 and 48198	70-75%	46%
Individuals and families with annual incomes at or below 200% of the Federal Poverty Level	75-85%	90%

DEMOGRAPHIC DATA

Number of Safety Net Health Participants by ZIP Code (FIGURE 1)

Total served: 4,718

Map reflects participants served for which Washtenaw County ZIP codes were reported.



Breakdown by INCOME



Breakdown by RACE



Breakdown by AGE



Washtenaw Coordinated Funders (WCF) is meeting the needs of our community's most vulnerable in four priority areas through three funding components intended to: Support human services programming; Build research capacity; Foster community collaboration and systems-level change. WCF includes the following partners: Ann Arbor Area Community Foundation (AAACF); Office of Community and Economic Development (OCED), representing Washtenaw County, Washtenaw County and the City of Ann Arbor; United Way of Washtenaw County (UWWC); Saint Joseph Mercy Ann Arbor (SJMAA). For more information, visit our website: coordinatedfunders.org.

DASHBOARD HIGHLIGHTS- NUTRITION



Our Community Outcome: Increase food security for people with low incomes.

COMMUNITY TRENDS

- Data from the 2014 Feeding America survey show that in Washtenaw County the rate of food insecurity was 14.3%, slightly below the national rate of 15 percent.
- The overall number of residents receiving SNAP benefits has declined from 37,566 in 2011 to 24,483 in 2016, a change which has been attributed to improvements in the economy.
- A comparison of HIP survey data over time showed that among low-income families there has been an increase in adults reducing food intake due to cost: from 13% of families in 2010 to 20% of families in 2015.

FOOD SECURITY OF THE ECONOMICALLY DISADVANTAGED IN WASHTENAW COUNTY

Percent of Individuals Receiving SNAP



Average SNAP Payment per Person



Notes: Feeding America's Feeding Forward 2013 and Feeding Forward 2016 survey data. Drop in overall benefit usage related to improving economy over time. SNAP benefits provided a total economic impact of \$40-\$50 million per year to the County.

Food Security Among Low-Income Residents



Percentage of Adults in Low-Income Families Who Reduced Food Intake Due to Cost



Community Dashboard

JULY 2018 - JUNE 2019

PROGRAM LEVEL OUTCOMES

This section illustrates the total number of participants who reported achieving specified outcomes, and the corresponding percentage of achievement for all participants working on that outcome.

Hunger Relief



Increased fruit and vegetable distribution to individuals and families with low incomes (*pounds of food distributed)



Enhancement of Food Security and Nutrition Education



Participants who reported intent to consume fresh fruits and vegetables



Participants who engaged in home and/or community gardening



Participants who were able to remain safely in their own homes as a result of the nutrition and daily volunteer contact received through home-delivered meals



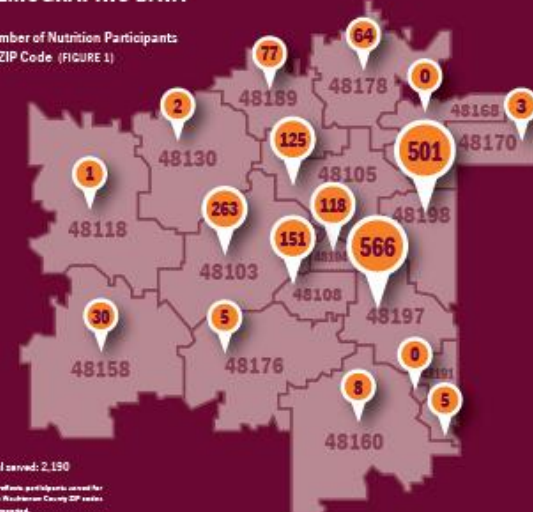
POPULATIONS SERVED ACROSS ALL PRIORITY AREAS

Below are the boundary- and priority area-spanning populations that WCF are prioritizing across the funding portfolio. Percentages are estimates based on data from programs electing to track the information—they do not represent totals for all WCF participants.

Priority Population	Goal	% Served
Individuals and families residing in census tracts with a low or very low opportunity score rating on the Washtenaw Opportunity Index	25-50%	74%
Families with newborns enrolled in Medicaid and/or families with children enrolled in MICHild	20-35%	24%
Homebound seniors	20-35%	30%
Individuals and families experiencing chronic homelessness	15-30%	13%
Individuals and families residing in the zip codes of 48197 and 48198	70-75%	46%
Individuals and families with annual incomes at or below 200% of the Federal Poverty Level	75-85%	90%

DEMOGRAPHIC DATA

Number of Nutrition Participants by ZIP Code (FIGURE 1)



Total served: 2,130

Map reflects participants served for which Washtenaw County ZIP codes were reported.

Breakdown by INCOME



Breakdown by RACE



Washtenaw Coordinated Funders (WCF) is meeting the needs of our community's most vulnerable in four priority areas through five funding components intended to support human services programming, build capacity, foster community collaboration and systems-level change. WCF includes the following partners: Ann Arbor Area Community Foundations (AAACF); Office of Community and Economic Development (OCED), representing Washtenaw County, Urban County and the City of Ann Arbor; United Way of Washtenaw County (UWWC); Saint Joseph Mercy Ann Arbor (SJMAA). For more information, visit our website: coordinatedfunders.org.

DASHBOARD HIGHLIGHTS- HOUSING/HOMELESS

Washtenaw Coordinated Funders

Housing & Homelessness

Our Community Outcome: Reduce the number of people who experience homelessness.

COMMUNITY TRENDS

- From 2015 to 2019, the overall homeless count for Washtenaw County has decreased almost 27%, as shown by the Washtenaw County Point-in-Time Count.
- Washtenaw County's portion of the statewide homeless population is approximately 3% (n=273 individuals in 2019).
- 70% of persons experiencing homelessness are individuals not in a family.
- In the 2019 Point-in-Time Count, 91% of those reporting mental illness were sheltered, up from 72% in 2015.

HOUSING & HOMELESSNESS IN WASHTENAW COUNTY

Length of Time Homeless (Days)¹ *Median length of time in Emergency Shelter and Transitional Housing

2015: 45 days | 2018: 41 days | Change: -4 days

GOAL: A decrease in the median length of time

Returns to Homelessness² *Total returns to homelessness from Permanent Housing within 2 years

2015: 38% | 2018: 20% | Change: -18%

GOAL: Fewer returns from Permanent Housing

Permanent Housing Placement and Retention

Percent of successful exits from SO, ES, TH, and RRH* | 2015: 42% | 2018: 52% | Change: +10%

GOAL: More exits to or retention in Permanent Housing

Percent of successful exits or retention for Permanent Supportive Housing | 2015: 96% | 2018: 96% | Change: 0%

* ES = Emergency Shelter
PH = Permanent Housing
RRH = Rapid Rehousing
SO = Supportive Housing
TH = Transitional Housing

Source: Washtenaw County Point-in-Time Count

Community Dashboard

JULY 2018 - JUNE 2019

PROGRAM LEVEL OUTCOMES

This section illustrates the total number of participants who reported achieving specified outcome, and the corresponding percentage of achievement for all participants working on that outcome, as measured by HMIS.

Homelessness Prevention and Diversion

- Households that received financial assistance for housing and as a result, they maintained existing housing or moved into other permanent housing: 1043 (89%)
- Households that remained stably housed 3 months after receiving financial assistance and/or non-financial housing stabilization supports: 517 (96%)

Emergency Shelter, Transitional Housing and/or Homelessness Outreach

- Households that moved on to permanent housing after receiving assistance from emergency shelter or transitional housing programs: 304 (59%)
- Households that acquired income and/or benefits during emergency shelter, transitional housing, and/or street outreach during program enrollment: 248 (63%)

Rapid Rehousing (RRH)

- Households that exited to a permanent housing destination: 129 (94%)
- Households that exited RRH who also maintain permanent housing for at least 6 months following RRH exit: 105 (88%)

Permanent Supportive Housing (PSH)

- Households who remained in permanent supportive housing programs or exited to other permanent housing: 804 (89%)
- Adults currently in PSH and those who exited from PSH that increased or maintained their income: 661 (80%)

POPULATIONS SERVED ACROSS ALL PRIORITY AREAS

Below are the boundary- and priority area- spanning populations that WCF are prioritizing across the funding portfolio. Percentages are estimates based on data from programs willing to track the information—they do not represent totals for all WCF participants.

Priority Population	Goal	% Served
Individuals and families residing in census tracts with a low or very low opportunity score (using the Washtenaw Opportunity Index)	25-50%	74%
Families with newborns enrolled in Medicaid and/or families with children enrolled in MIChild	20-35%	24%
Homebound seniors	20-35%	30%
Individuals and families experiencing chronic homelessness	15-30%	13%
Individuals and families residing in the zip codes of 48197 and 48198	70-75%	46%
Individuals and families with annual incomes at or below 200% of the Federal Poverty Level	75-85%	90%

DEMOGRAPHIC DATA

Number of Housing & Homelessness Participants by ZIP Code (FIGURE 1)

Total served: 8,088

Map reflects participants served for which Washtenaw County ZIP codes were reported.

Breakdown by INCOME

Income of all WCF Participants (FIGURE 2A) Total served: 27,838

- Income at or below 200% FPL: 49%
- Income between 200% and 300% FPL: 48%
- Income above 300% FPL: 5%

Income of Housing & Homelessness Participants (FY19) (FIGURE 2B) Total served: 8,088

- Income at or below 200% FPL: 96%
- Income above 200% FPL: 2%

Breakdown by RACE

Race of Washtenaw County Residents (FIGURE 3A) *Source: ACS 2017

- White: 77%
- Black/African American: 19%
- Hispanic/Latino: 8%
- Asian: 4%
- Other/Unknown: 1%

Race of Housing & Homelessness Participants (FY19) (FIGURE 3B) Total served: 8,088

- White: 32%
- Black/African American: 59%
- Hispanic/Latino: 7%
- Asian: 1%
- Other/Unknown: 1%

Breakdown by AGE

Age of Washtenaw County Residents (FIGURE 4A) *Source: ACS 2017

- Age 0-17: 42.6%
- Age 18-24: 38.7%
- Age 25-34: 15.6%
- Age 35-44: 5.5%
- Age 45-54: 2.2%
- Other/Unknown: 2.2%

Age of Housing & Homelessness Participants (FY19) (FIGURE 4B) Total served: 8,088

- Age 0-17: 23.5%
- Age 18-24: 42.4%
- Age 25-34: 13.2%
- Age 35-44: 9.2%
- Age 45-54: 8.4%
- Other/Unknown: 0.8%

Washtenaw Coordinated Funders (WCF) is meeting the needs of our community's most vulnerable in four priority areas through three funding components intended to: Support income portfolio programming; Build nonprofit capacity; Foster community collaboration and systems-level change. WCF includes the following partners: Ann Arbor Area Community Foundation (AAACF); Office of Community and Economic Development (OCED), representing Washtenaw County, Urban County and the City of Ann Arbor; United Way of Washtenaw County (UWWC); Saint Joseph Mercy Ann Arbor (SJMAA). For more information, visit our website: coordinatedfunders.org.

DASHBOARD HIGHLIGHTS- OLDER ADULTS

Washtenaw Coordinated Funders

Older Adults

Our Community Outcome: Increase or maintain independent living factors for vulnerable adults 60 years of age and older with low incomes.

COMMUNITY TRENDS

- 52% of respondents to the most recent 60+ Survey reported a very good quality of life.
- There was a slight decline between 2010 and 2015 in life satisfaction for adults 65+.
- There was an increase in social support for adults ages 75+ in the same time period.
- The percentage of those 65+ who live below poverty level has steadily hovered at around 6%.
- There is a nine year disparity in life expectancy between residents in Ypsilanti Township and those in the cities of Chelsea, Saline, and parts of Ann Arbor.
- There is a 14-year disparity based on race.

OLDER ADULTS IN WASHTENAW COUNTY

Mean Age of Death

	White/Caucasian	Black/African American	Difference (Years)
Ann Arbor City	78	70	8
Pittsfield Township	73	62	11
Superior Township	77	64	13
Ypsilanti Township	69	62	7
Ypsilanti City	72	67	5
Washtenaw County	80	66	14

Source: MCHIEP Data/Behavioral, 2010-2013

Poverty Rate

Year	Rate
2008	5.2%
2009	5.3%
2010	5.3%
2011	5.3%
2012	5.3%
2013	5.3%
2014	5.3%
2015	5.3%

Adults with no other food resources 60+ adults between 2010 and 2014.

Life Satisfaction

Response	2010	2015
Age 65-74	99%	98%
Age 75+	100%	97%

Social/Emotional Support

Response	2010	2015
Age 65-74	85%	84%
Age 75+	72%	82%

Source: Washtenaw County WCF Survey, Michigan Department of Health and Human Services, Vital Statistics

Community Dashboard

JULY 2018-JUNE 2019

PROGRAM LEVEL OUTCOMES

This section illustrates the total number of participants who reported achieving specified outcomes, and the corresponding percentage of achievement for all participants working on that outcome.

Senior Crisis Intervention

Participants seeking and receiving critical senior services: **1031** (100%)

Participants who reported increased self-sufficiency as a result of services from the senior crisis intervention programming: **539** (64%)

Senior Service Network Navigation

Participants who reported the program helped them get needed services: **582** (68%)

Participants who received assistance with completing applications: **513** (100%)

Senior Social Integration

Participants who reported an increase in the number of days they feel good/healthy: **245** (54%)

Participants that reported feeling less socially isolated as a result of program activities: **453** (61%)

POPULATIONS SERVED ACROSS ALL PRIORITY AREAS

Below are the boundary- and priority area- spanning populations that WCF are prioritizing across the funding portfolio. Percentages are estimates based on data from programs electing to track the information—they do not represent totals for all WCF participants.

Priority Population	Goal	% Served
Individuals and families residing in census tracts with a low or very low opportunity score rating on the Michigan Opportunity Index	Above goal: 25-50%	74%
Families with newborns enrolled in Medicaid and/or families with children enrolled in MICHILD	Slightly below goal: 20-35%	24%
Homebound seniors	Well below goal: 20-35%	30%
Individuals and families experiencing chronic homelessness	20-35%	13%
Individuals and families residing in the zip codes of 48157 and 48198	70-75%	46%
Individuals and families with annual incomes at or below 200% of the Federal Poverty Level	75-85%	90%

DEMOGRAPHIC DATA

Number of Older Adult Participants by ZIP Code (FIGURE 1)

Total served: 2,887

Map notes: Most urban participants served for White/Black/African American ZIP codes were reported.

Breakdown by INCOME

Income of all WCF Participants (FIGURE 2A): Total served: 21,288. 48% >200% Fed Poverty, 48% <200% Fed Poverty, 5% Unknown.

Income of Older Adult Participants (FY19) (FIGURE 2B): Total served: 2,467. 56% >200% Fed Poverty, 34% <200% Fed Poverty, 10% Unknown.

Breakdown by RACE

Race of Washtenaw County Residents (FY19) (FIGURE 3A): Total served: 1,407. 77% White, 10% Black/Black/African American, 8% Asian, 4% Multi-Racial, 1% Other/Unknown.

Race of Older Adult Participants (FY19) (FIGURE 3B): Total served: 2,467. 66.8% White, 27.5% Black/Black/African American, 2.7% Asian, 1.6% Multi-Racial, 1.4% Other/Unknown.

Breakdown by GENDER

Gender of Washtenaw County Residents (FY19) (FIGURE 4A): Total served: 1,407. 49% Female, 51% Male.

Gender of Older Adult Participants (FY19) (FIGURE 4B): Total served: 2,467. 66% Female, 29% Male, 5% Unknown.

Washtenaw Coordinated Funders (WCF) is meeting the needs of our community's most vulnerable in four priority areas through three funding components intended for Support Home services programming, Build capacity for community collaboration and systems-level change. WCF includes the following partners: Ann Arbor Area Community Foundations (AAACF), Office of Community and Economic Development (OCED), representing Washtenaw County, Upton County and the City of Ann Arbor, United Way of Washtenaw County (UWWC), Saint Joseph Mercy Ann Arbor (SRMAA). For more information, visit our website: coordinatedfunders.org.

CAPACITY BUILDING – SHIFT TO CHOICE AND ONLINE PLATFORM

CATCHAFIRE MID-YEAR REVIEW / PROGRAM IMPACT

10

Mid-Year Engagement Metrics

The Washtenaw cohort has shown strong engagement. Since we launched on February 10, 2020, we've achieved a **return on investment of 4.75x** by mid-year and have exceeded our engagement metric goal of 30% with **38% engagement at mid-year**.



71

Total organizations who have matched on a Catchafire project or call



250

Total unique matches on a project or call between nonprofits and volunteers



5,198

Total volunteer hours donated from professionals for nonprofit projects/calls



\$1,042,287

Short-term project and call value gained on Catchafire through working with volunteers

SYSTEMS
CHANGE –
FIRST
INVESTMENT
CHAMPIONS
FOR CHANGE



COORDINATING FUNDING – FUTURE CONSIDERATIONS

- Desire to change the model to:
 - Center racial equity and focus on addressing race, poverty and trauma
 - Incorporate lessons learned from the pandemic response
 - Establish clear outcomes and metrics to track progress, potentially narrowing the focus areas to ensure impact on metrics
 - Simplify the grant-making process.

COORDINATING FUNDING – FUTURE CONSIDERATIONS

- Partnership changes
 - Ann Arbor Community Foundation exiting partnership
 - Shift – no longer Coordinated Funding
 - New partnership possible with new focus
 - Potential consideration for a 6 month extension to provide additional planning and coordination time

CONTACT INFORMATION –

- Teresa Gillotti, Director
- Washtenaw County Office of Community and Economic Development
- Cell: 810-410-6982
- gillottitm@washtenaw.org

- Morghan Williams Boydston, Human Services Manager
- Washtenaw County Office of Community and Economic Development
- Cell: 734-249-1314
- williamsm@washtenaw.org