

# Platt Road Site

---

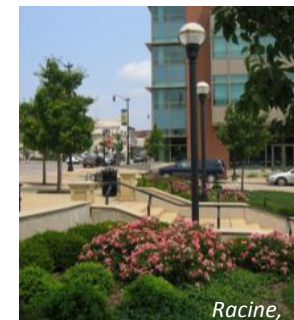
2014 Community Design Sessions

CAC Meeting June 10, 2014

# 1 SmithGroupJJR – Urban Design

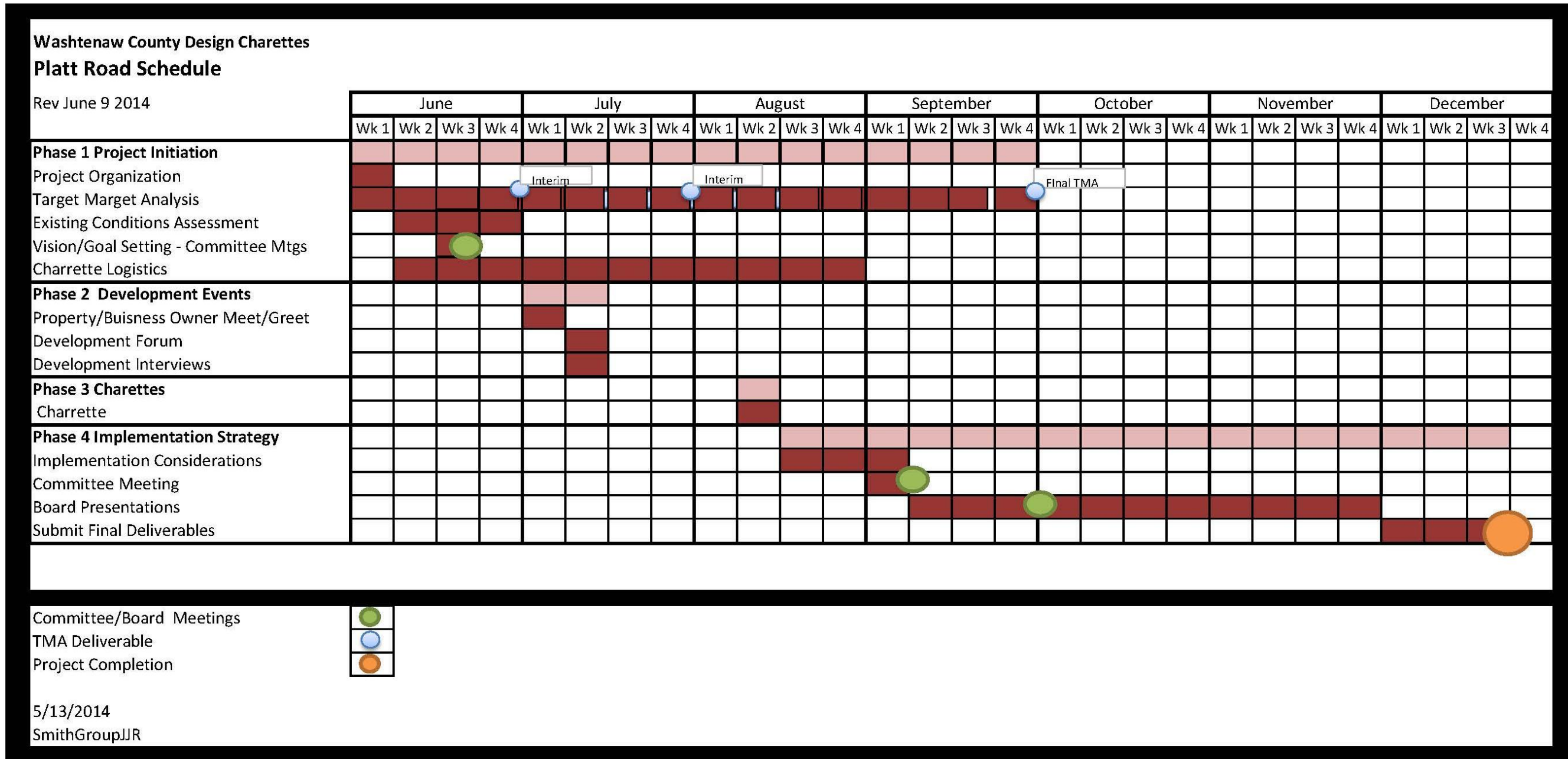
*Create a legacy of inspiring places that enhance the environment + enrich the human spirit*

- A/E Firm w/ planning, urban design, landscape architecture
- 159 years in business
- 364 LEED Professionals
- 10 nationwide offices
- Ann Arbor Team
- LSL Partner – planning + charrette assistance





# 2 Project Schedule



# 3 What is a Charrette?

Intensive, collaborative, interactive design workshops that bring together design professionals, public officials and staff, and the public to develop a shared vision, plan and design.

**Benefits?** Maximizes stakeholder energy, provides immediate feedback to designers and builds consensus among a variety of stakeholders.



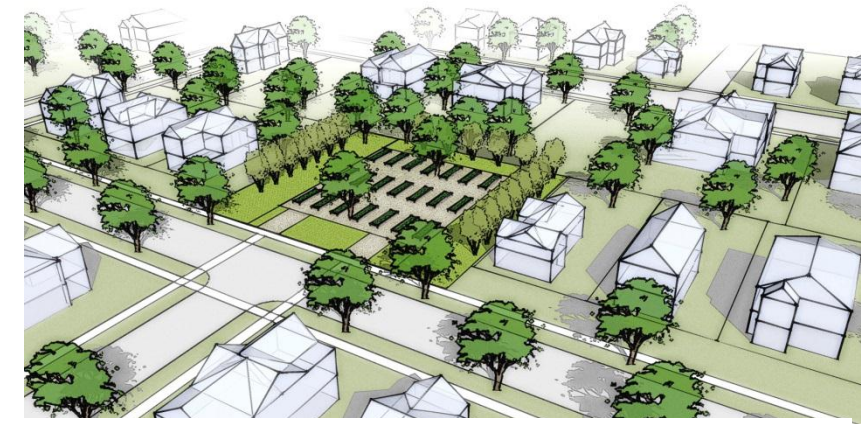


# 4

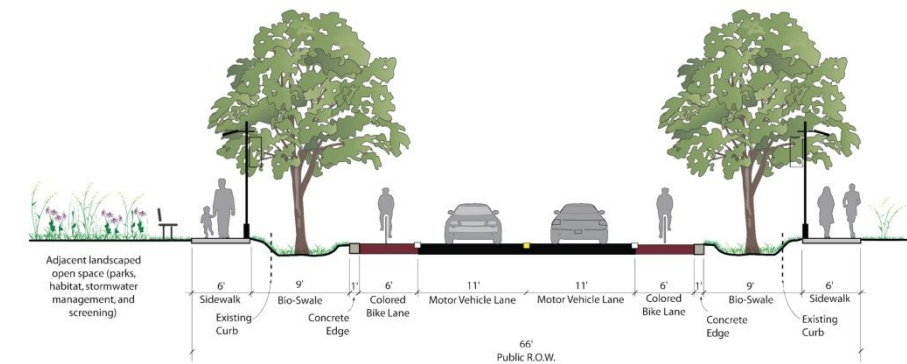
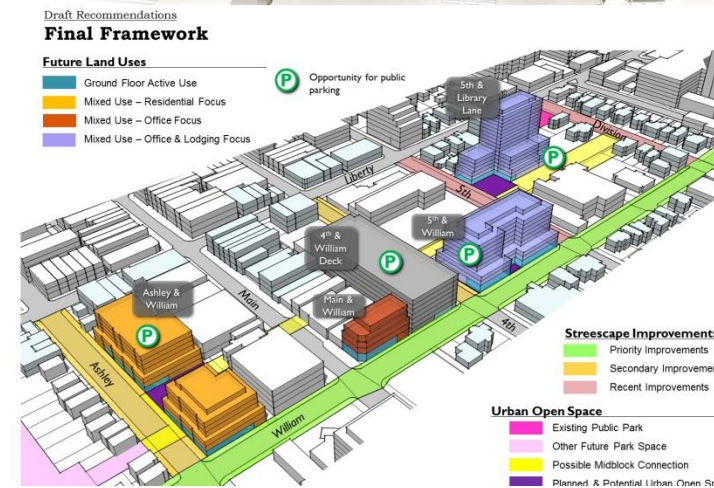
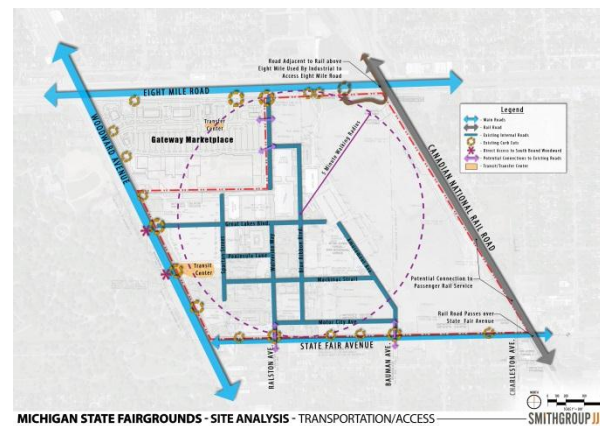
# Products

Combination on materials

- Hand and Computer generated
- Plans, sections, perspectives
- Convey the vision, character, density, land use.



Looking Northeast





# 5 Charrette Format/Schedule

		DAY ONE		DAY TWO		DAY THREE	
<b>Washtenaw County Design Charrettes</b>		<b>Visioning</b>		<b>Design Exploration</b>		<b>Plan Synthesis</b>	
<b>Dates</b>							
<b>Preliminary Schedule for Discussion</b> Draft: 5/13/14	7:00 AM						
	8:00 AM						
	9:00 AM						
	10:00 AM			<b>Team Arrival</b>	<b>Team Arrival</b>		
	11:00 AM	<b>Team Set-Up</b> <i>Project Orientation</i>		<b>Alternative Concepts</b> Development 3D SketchUp Models - Day #1 Exercises	<b>Public drop-in</b> Guided observation/input	<b>Refine Preferred Alternative</b>	<b>Committee Drop In Review</b>
	12:00 PM	<b>Committee Lunch</b> (county to coordinate)		Lunch in studio (county to coordinate)		Lunch in studio (county to coordinate)	
	1:00 PM	Site Walk with Committee		<b>Refinement/Vignettes</b> SketchUp exports, hand drawn sketches	<b>Public drop-in</b> Guided observation/input Potential Stakeholder interviews	<b>Continue Refinement Preferred Alternative</b>	
	2:00 PM	<b>Elected Officials Briefing</b>					
	3:00 PM	<i>Meeting Prep</i>			<b>Committee Sneak Peak</b>	<b>Committee Sneak Peak</b>	
	4:00 PM	<b>Public Workshop</b> Visioning Confirmation Background, Site, Market Proforma etc. Breakouts: 2D Site Analysis, 3D Block Exercise Groups Present		<b>Public Open House</b> Present Alternatives for Input Determine Preferred Direction			
	5:00 PM						
	6:00 PM						
	7:00 PM	<i>Team Debriefing Dinner (incl. market discussion)</i> Day #2 Set-up					
	8:00 PM						
9:00 PM							
10:00 PM							
	<b>Public Session</b>						
	<b>Committee Session</b>	(CAC or JTC)					
	<b>Team Work Session</b>	(SGJJR Team and County Staff)					

# 6 Guiding Principles

Per Washtenaw County Resolution:

- demonstration for green technologies and sustainable design,
- mixed use,
- mixed income including affordable and moderately priced housing,
- varied types and forms of housing for people of different ages,
- an urban village,
- minimized parking spaces,
- alternative transit and lower auto footprint
- less impervious surface,
- integration with neighborhood