

LEGEND

	SECTION LINE
	OLD ROW
	PERMANENT ROW/EASEMENT
	PROPOSED DRAINAGE EASEMENT (HATCHING)

NCI NORTHWEST CONSULTANTS, INC.

PROJECT MANAGEMENT - PUBLIC SERVICES - CITY OF ANN ARBOR

**E. STADIUM BLVD
BRIDGES REPLACEMENT PROJECT
PROPOSED DRAINAGE EASEMENT - EXHIBIT 8
500 E. STADIUM BLVD
09-09-32-401-001**

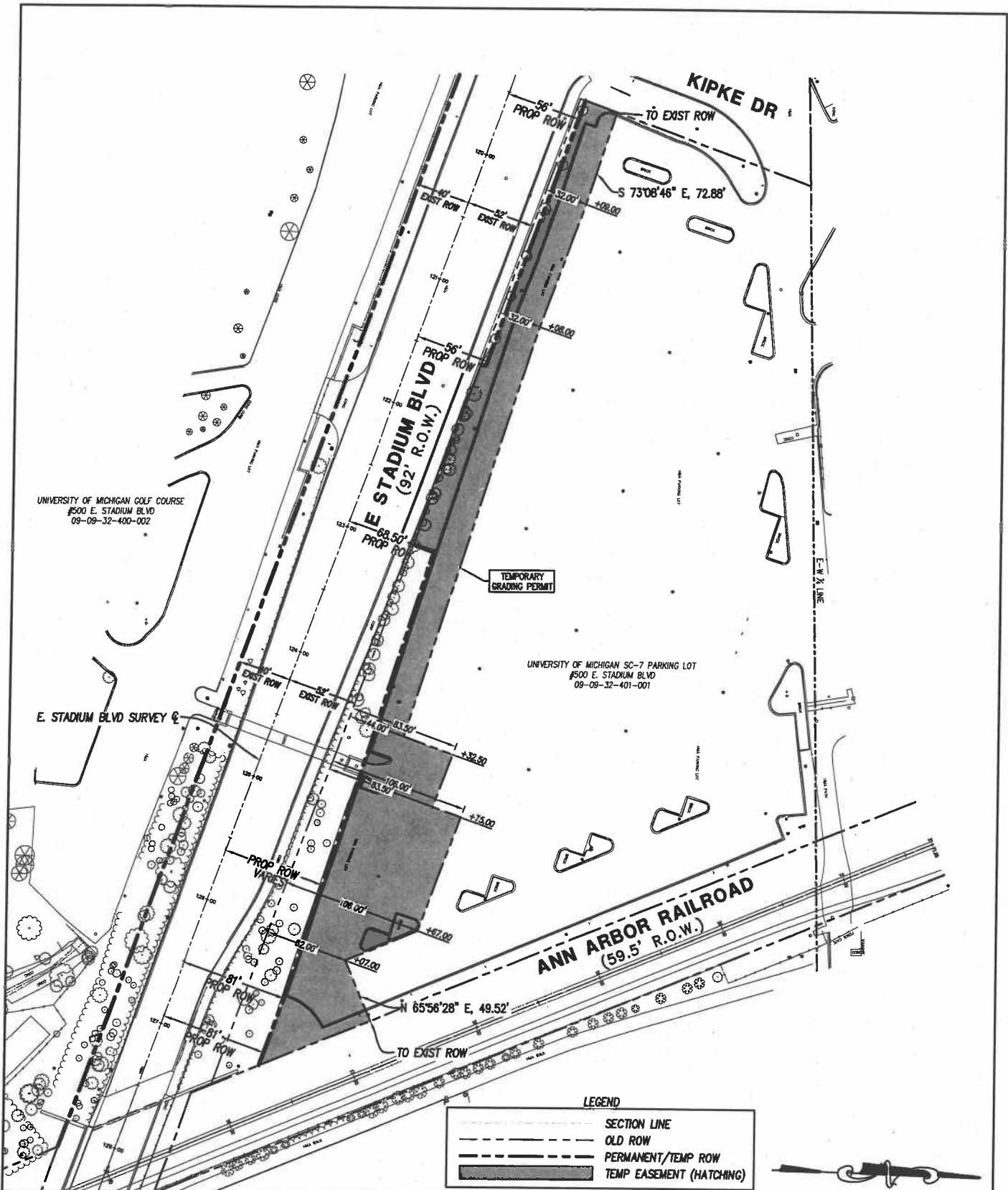
SCALE
HORIZ. 1"=100'

INCH
1/2

DRAWING NO.
2006-045-EXHIBIT 8

SHEET NO. **1** OF **1**

REV. NO.	DESCRIPTION	DATE	DR. BY	CH. BY
	REVISED FOR EXTENDED WALL	03/07/11	AK	RL
	ORIGINAL ISSUE	07/23/10	AK	RL



LEGEND

- SECTION LINE
- OLD ROW
- PERMANENT/TEMP ROW
- TEMP EASEMENT (HATCHING)



NCI NORTHWEST CONSULTANTS, INC.

PROJECT MANAGEMENT - PUBLIC SERVICES - CITY OF ANN ARBOR

**E. STADIUM BLVD
BRIDGES REPLACEMENT PROJECT
TEMPORARY GRADING PERMIT - EXHIBIT 11
500 E. STADIUM BLVD
09-09-32-401-001**

SCALE
HORIZ. 1"=100'

DRAWING NO.
2006-045-EXHIBIT 11

SHEET NO. **1 OF 1**

REV. NO.	DESCRIPTION	DATE	DR. BY	CH. BY
	REVISED ACCESS TO SC-7 PER UM	03/25/11	AK	RL
	REVISED FOR EXTENDED WALL	03/07/11	AK	RL
	ORIGINAL ISSUE	07/23/10	AK	RL