

Ann Arbor "Park Advisory Commission"

Petition and Support Packet to relocate Windemere Park tennis courts for maximum free space and play area

November 13, 2013

The purpose of this package is to provide clear evidence of very strong neighborhood support for changing the location of the two new Windemere Park tennis courts scheduled to be built in Spring/Summer 2014.

PAC passed resolutions in May 2012 to replace the two tennis courts in Windemere Park and in October 2012 to place them at Option 4 (see Attachment 1 for an aerial view of the "central" Option 4 and "northern" Option 1 locations).

Over the last year, many neighborhood residents have expressed significant concerns with the Option 4 location, specifically that placing the courts in the center of the Park's green space will limit the usefulness of the green space for a number of other activities.

On September 30, 2013, the Earhart Knolls Homeowners Association (EKHA) Board of Directors voted unanimously to recommend that PAC change from Option 4, in the center of the Park, to Option 1, at the northern edge of the Park, in order to maximize the free space available for other activities (see Attachment 2).

On October 29, 2013, we met with Sumedh Bahl and Colin Smith of Parks and Recreation to discuss neighborhood concerns with the location of the courts. In light of the recent and unanimous vote by the EKHA Board of Directors, it was agreed that we would conduct a poll of those homeowners who live on the perimeter of the Park as well as those who attended the July and October 2012 public meetings.

We set up a Doodle poll, worded neutrally, to gauge neighborhood opinion regarding Option 4 versus Option 1 (see Attachment 3 for specific language). As of November 11, the vote is 29 votes for Option 1, 5 votes for Option 4, and 1 No Opinion. Based on a criteria of 1 vote per household, the vote is 29 votes (85%) for Option 1 and 5 votes (15%) for Option 4.

Earhart Village Homes Association, another of Ann Arbor's residential Associations share the EKHA's concern for the best location for the tennis courts in Windemere Park and are supporting The EKHA petition (see Attachment 4).

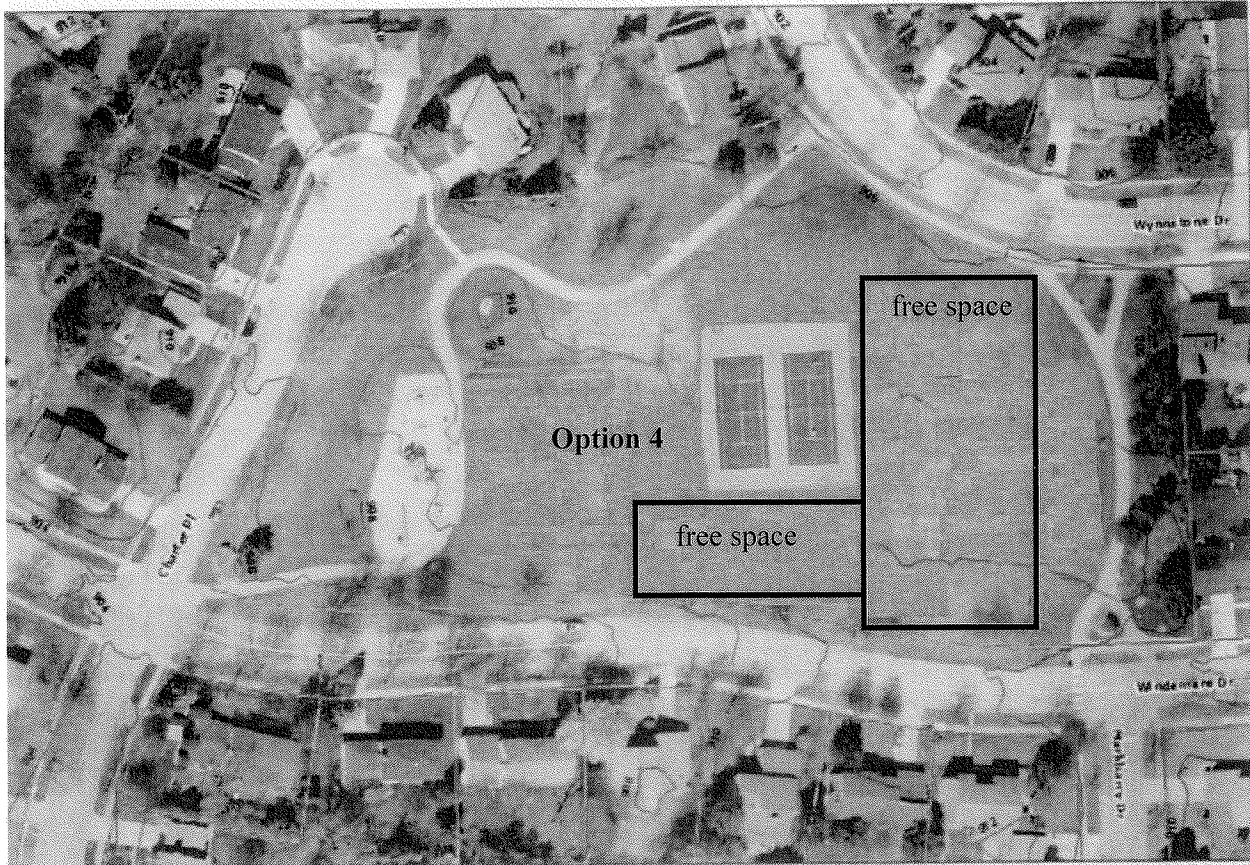
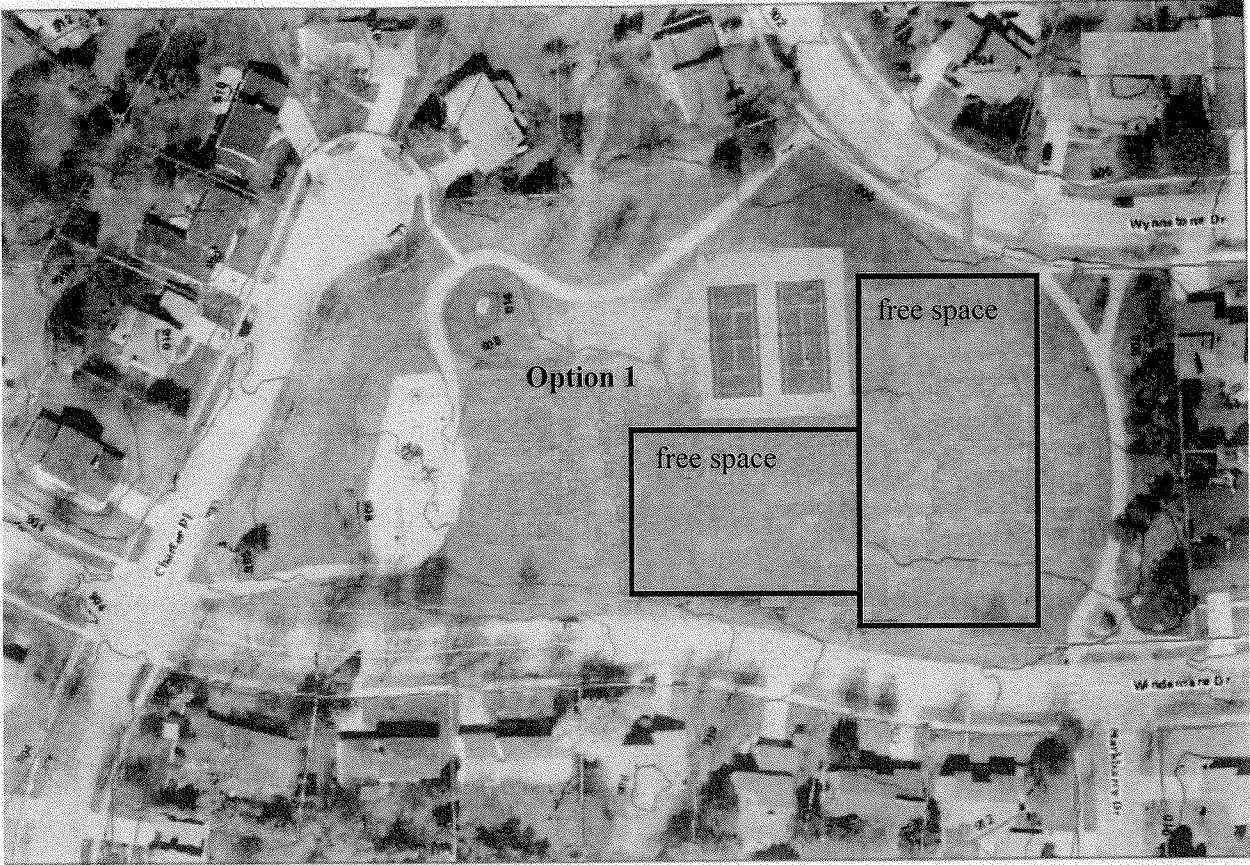
In view of the above, we believe there is a clear and significant neighborhood preference for Option 1 and we strongly urge PAC to proceed with construction of the new tennis courts in late Spring/Summer 2014 at the Option 1 location.

We thank you for your public service.

Jeff Alson	jeffalson@sbcglobal.net	734-663-6326
Ed Weiss	intart@sbcglobal.net	734-769-8434
Chris O'Connor	chrisoc98@aol.com	734-476-3900
Didi Massell	dmassell@umich.edu	734-214-9591

Attachments:

1. Aerial view of the "central" Option 4 and "northern" Option 1 locations
2. Earhardt Knolls Homeowners Association Board of Directors petition
3. Doodle Poll Survey
4. Earhart Village Homes Association (support letter)



Windemere Park Tennis Courts

On September 30th 2013, the Earhart Knolls Homeowners Association Board of Directors unanimously voted to petition the Park Advisory Commission (PAC) to reconsider the most logical place for the relocation of the Windemere Park tennis courts. This was brought about by concerns expressed by homeowners in our Association as well as homeowners in other areas.

Overview of the Issue

In the Spring of 2012 Amy Kuras, Park Planner, presented three locations for the re-location of the Windemere Park tennis courts. On July 19, 2012, twenty-four plus home owners met to review the three options for locating the tennis courts and were agreed that what we now call "Option 1" was the best choice. There was no opposition at that time and the final meeting for discussion on the three locations would be finalized at one last meeting October 19th 2012.


At the October 19th meeting, a 4th option was put forth and voted on without evaluating it against the previous "Option 1" choice. The only rationale for the 4th option was that placing the tennis courts in the middle of the park provided equal distance from homes on Windemere Dr. and homes on Wynnstone Dr.

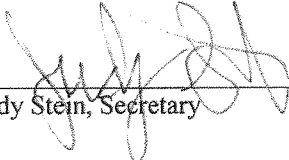
Recommendation

Attached is an aerial view of the two options for the location of the Windemere Park tennis courts. By moving the currently proposed "Option 4" location a scant 50 feet to the North, it will open up a good size area for play activities that would not otherwise be there. It is our sincere hope that the Park Advisory Commission will recognize the logic to this petition and accept that the original "Option 1" selection is the best choice for the Windemere Park tennis courts. We also strongly encourage PAC and the City to begin construction of the courts in Spring 2014.

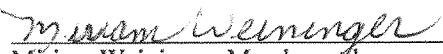
Earhart Knolls Homeowners Association, Board of Directors


Edward Weiss, President


Charles Blackmer, Vice President


Judy Stein, Secretary


Marla Goldstein, Treasurer

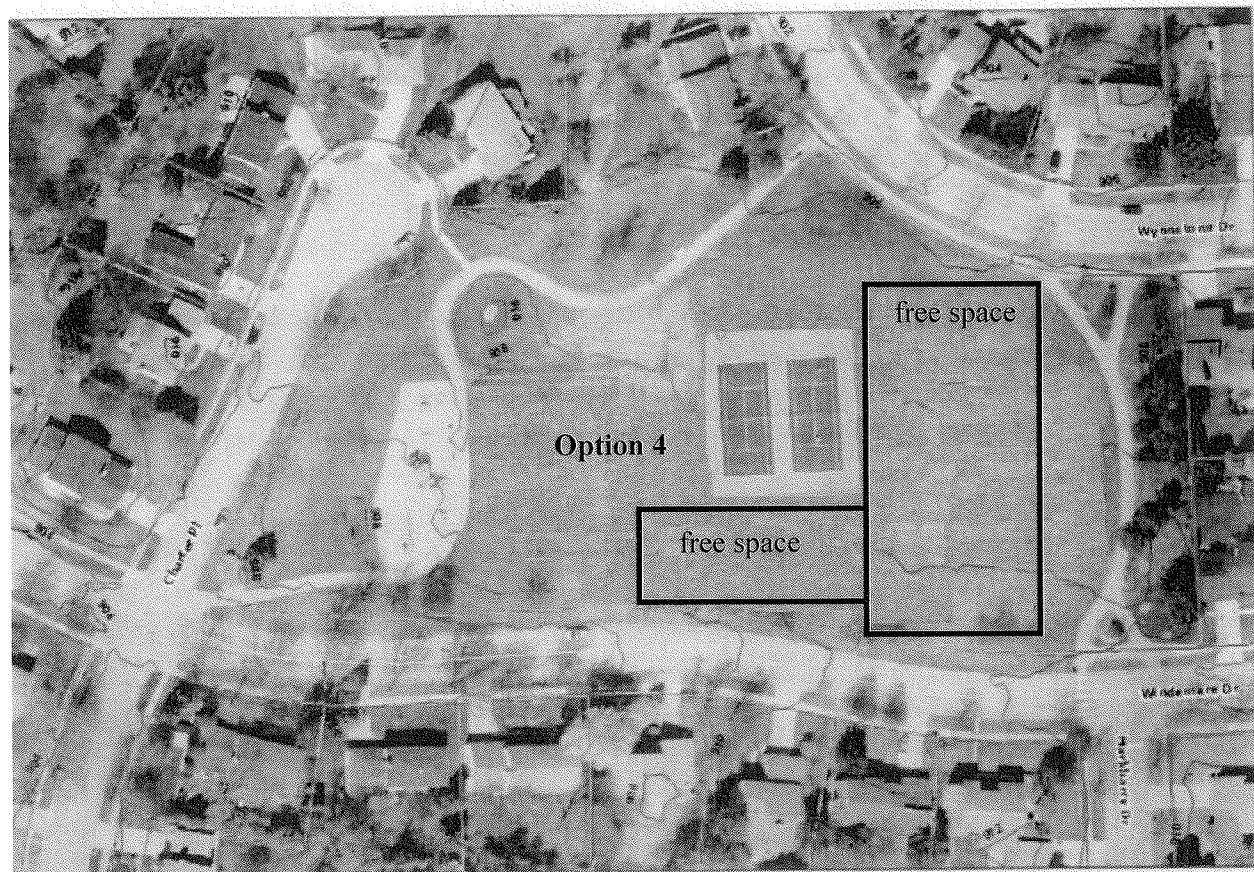
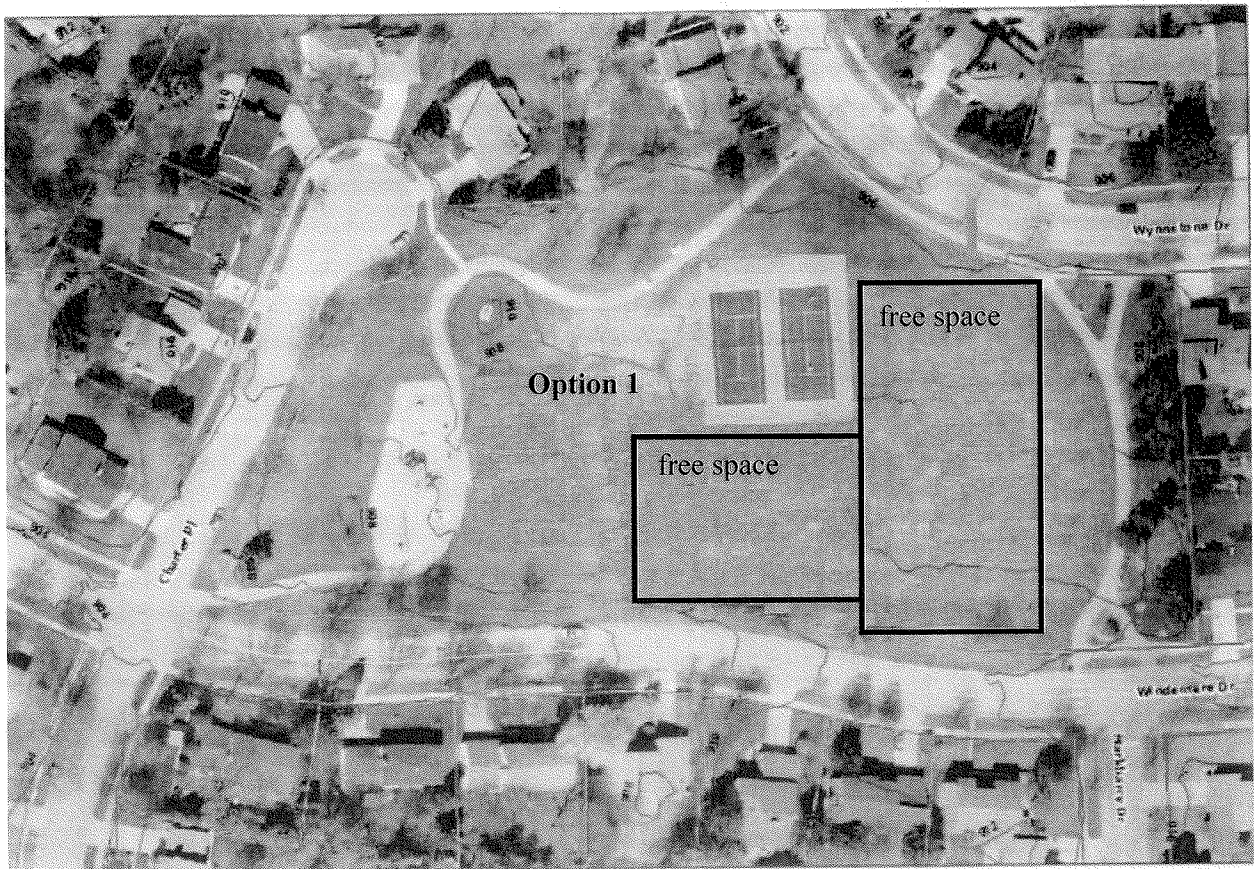

Miriam Weininger, Member at large


Christine O'Connor, Board of Directors


Meg Durant, Board of Directors


Paula Rand, Board of Directors

Addendum



Windemere Park



Doodle Poll on Location of Windemere Park Tennis Courts

Introduction

In an e-mail of September 28, 2013, Sumedh Bahl stated that "...the residents in the neighborhood have the option to present their choice, consensus of the significant number of residents in this area, to PAC and PAC may reconsider its decision about the placement of tennis courts."

In a follow-up meeting on October 29, 2013, Sumedh Bahl and Colin Smith advised that, in light of the recent unanimous vote by the Earhart Knolls Homeowners Association Board of Directors to recommend that PAC change the location of the new tennis courts from Option 4 to Option 1, it would be appropriate to survey the views of those homeowners who live on the "perimeter" of the park, as well as those who attended the two public meetings in July and October 2012.

Consequently, we set up a Doodle poll to do exactly this.

Language Describing the Doodle Poll and Options

The following text was emailed on November 3, 2013 to all attendees of the two public meetings, and was leafleted to all homes on the perimeter of the park over the next two days. We strove to make the language neutral, giving the major benefit of each of the two options that we have heard repeatedly from neighborhood residents.

Dear Neighbors and Friends of Windemere Park:

The city will be rebuilding the tennis courts in Windemere Park in Spring/Summer 2014. They determined that the courts cannot remain in the current location due to soils and water issues. See attached graphic for aerial view of two options. Option 1, which maximizes the free space available for other activities, was selected at a July public meeting. Option 4, which places the courts an equal distance from the closest houses, was selected at an October public meeting. The city is currently proceeding with Option 4. We would like to make sure that this choice actually reflects our neighborhood needs and wants, and the city suggested a survey of those homeowners on the perimeter of the park and those who attended the two public meetings, regarding Options 1 and 4. To resolve this, we need your vote! Please click on the link below and cast your household ballot for one of the following:

- Option 1: **The Northern Edge** of the Park
- Option 4: **The Center** of the Park
- No Opinion

VOTE HERE: <http://www.doodle.com/wukub7g5tqbxn7qa>

You can also contact Jeff Alson at jeffalson@sbcglobal.net or at the phone number below, if you prefer to vote without going to the doodle site.

Please vote by **November 10th! Your voice is important.** We will provide the results of this poll to the Parks Advisory Commission at their next meeting on November 19.

Thank you!

Jeff Alson	734-663-6326
Chris O'Connor	734-476-3900
Didi Massell	734-214-9591

Results of the Doodle Poll

There was an impressive response to the Doodle poll. We estimate that there are approximately 55 homes represented by the combination of the houses on the perimeter of the park and those residents who attended the two public meetings. Over the 8 days from November 3 through November 11, there were 43 votes, including multiple votes from some individual homes. This confirms that there is very significant interest in the location of the Windemere Park tennis courts.

As of November 11, the total vote is as follows:

- Option 1 ("northern" location): 34 votes
- Option 4 ("central" location): 8 votes
- No Opinion: 1 vote

Because some residents voted as individuals and not by home address as directed, it was necessary to assign individual votes as home address votes. Since some households have multiple members and others do not, we thought fairness dictated that each household should have one vote.

Using this method, the vote is as follows:

- Option 1 ("northern" location): 29 votes (85%)
- Option 4 ("central location): 5 votes (15%)

In sum, Option 1 is preferred by nearly a 6-to-1 margin.

Attachment 4

Colin Smith, Parks & Recreation Manager
City of Ann Arbor

Dear Mr. Smith,

We at the Earhart Village Homes Association applaud your and the city's decision to replace the tennis courts at Windemere Park. These courts are an important feature in our area and we are grateful for your support and approval in the city's continued commitment to our neighborhood.

We further hope that you and the Park Advisory Commission will work with our neighbors, The Earhart Knolls Homeowners Association, in selecting the best site for placement of the tennis courts in Windemere Park. While the issue of site selection is one that should be resolved between the city, the commission and the residents, we encourage you to give those most directly impacted, the residents adjacent the site, your most careful consideration.

Thank you for your service to our community and your efforts to maintain and enhance our neighborhood.

Sincerely,

Rod Sorge
President,
Board of Directors
Earhart Village Homes Association