

State Street Private Hangars

SS-01 (lot 13 south) Lauri Mendenhall (Ann Arbor) – tenant since 1974, previous tenant Carmickle

Hangar – 1,748 SF, built in 1968

No lease on file.

SS-02 (lot 12 south) Robert Lyjack (Chelsea – deceased) – tenant since 1974, previous tenant Schlenker

Hangar – 1,200 SF, built early 1960's

No lease on file.

SS-03 (lot 12 north) Craig Swailes (Ann Arbor) – tenant since 2001, previous tenant Fox

Hangar – 1,032 SF, rebuilt in 2003

Unsigned lease on file, initial term expired 12/31/2012 with two 5 year tenant options.

SS-04 (lot 11) Daniel Clisham (Ann Arbor) – tenant since 2011, previous tenant Barden

Hangar – 2,532 SF, built pre-1955

Current lease expires 1/31/21 with two 5 year tenant options.

SS-05 (lot 8 south) Bartholomew Fisher (Ann Arbor) – tenant since 2005, previous tenant Crawley

Hangar – 636 SF, built pre-1965

No lease on file.

SS-06 (lot 9 south) Gary Ernest (Saline) – tenant since mid-1990's, previous tenant Pantera

Hangar – 1,357 SF, built pre-1960

No lease on file.

SS-07 (lot 9 north) Gary Ernest (Saline) – tenant since mid-1990's, previous tenant Pantera

Hangar – 938 SF, built early 1960's

No lease on file.

SS-08 (lot 10) Wallace Wilkie (Ann Arbor - deceased) – tenant since 1958, previous tenant McDonald

Hangar – 2,153 SF, built in 1944

No lease on file.

SS-09 (lot E east) Mark Hopgood (Park City, UT) – tenant since 2001, previous tenant Mayer

Hangar – 2,365 SF, built in 1962, common building with SS-10

Current lease expires 12/1/16 with one 5 year tenant option.

SS-10 (lot E west) Mark Helsel (Pinckney) – tenant since 2002, previous tenant Lambarth

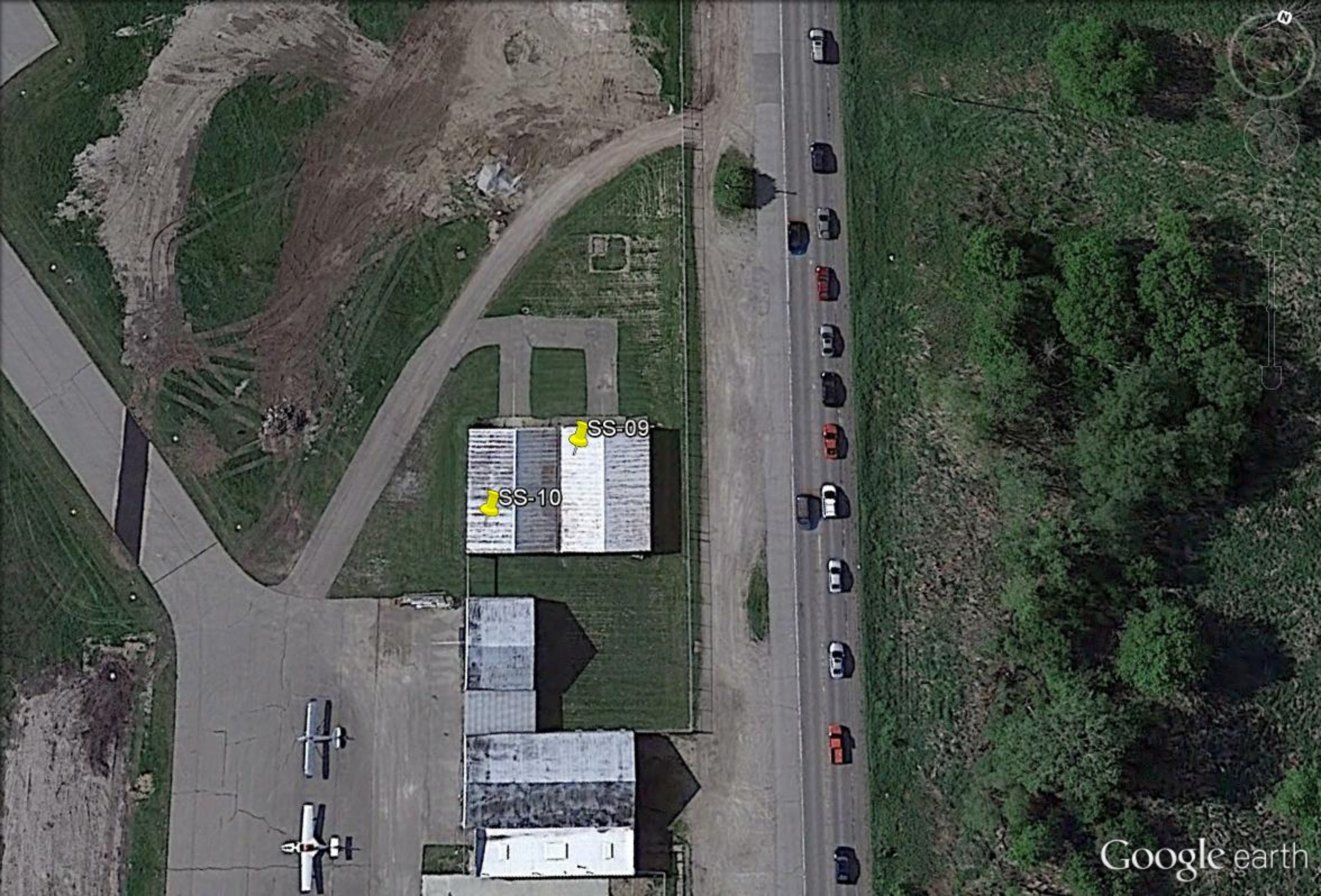
Hangar – 2,365 SF, built in 1962, common building with SS-09

Lease expired 12/31/12 (tenant did not renew two 5 year tenant options)

Prepared July, 2015

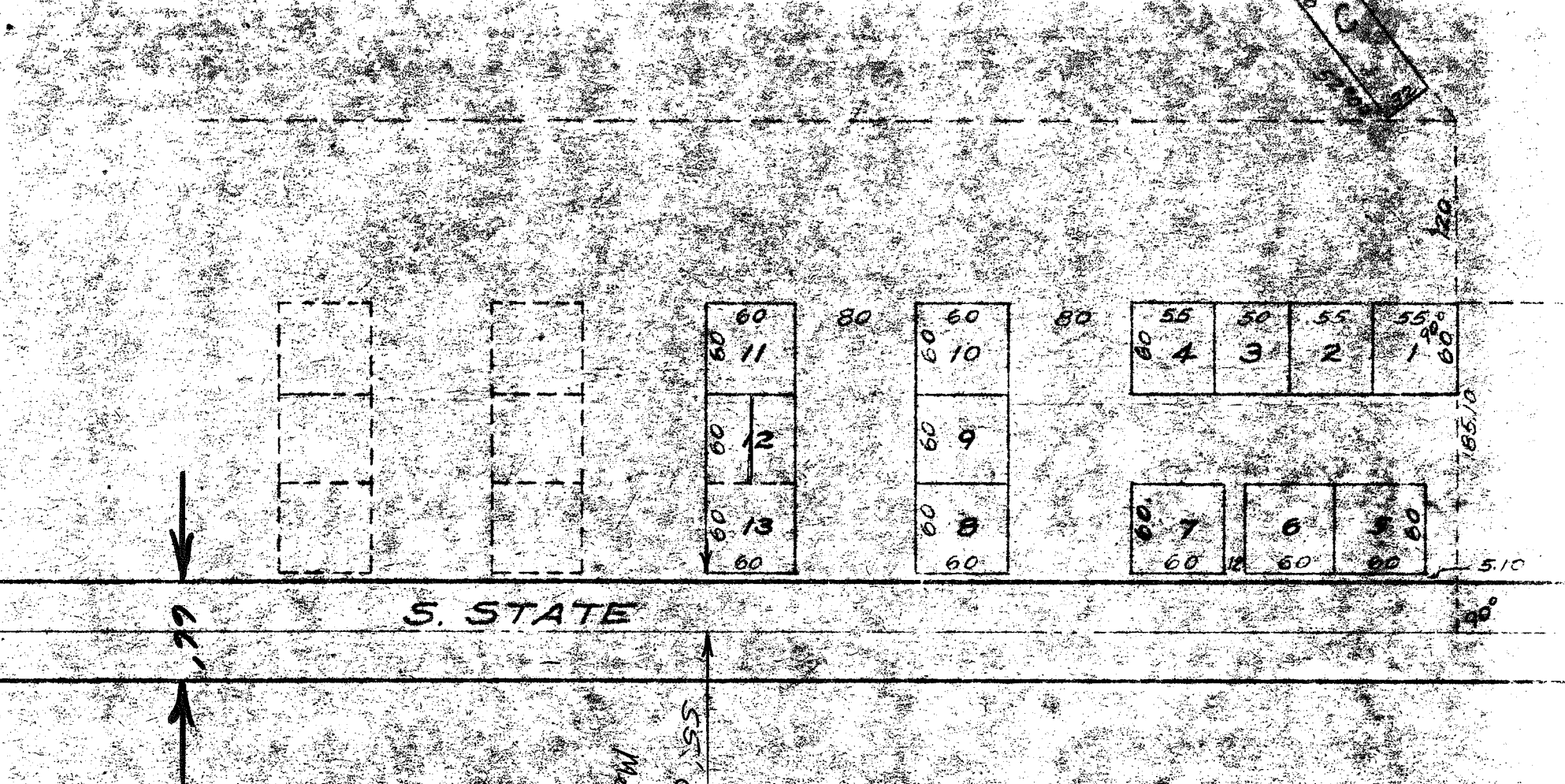


Google earth



SS-09

SS-10



S. STATE

"AIRPORT PLAT"

A PLAT OF HANGAR LOTS AT
 ANN ARBOR MUNICIPAL AIR PORT
 PART OF NW 1/4 OF SECT 16 T35 R6E PITTSF
 WASHTENAW COUNTY MICHIGAN

1" = 100'

Municipal Hall, 644 S. State St.
 Ann Arbor, Mich. 48106

55' E to LF Drive