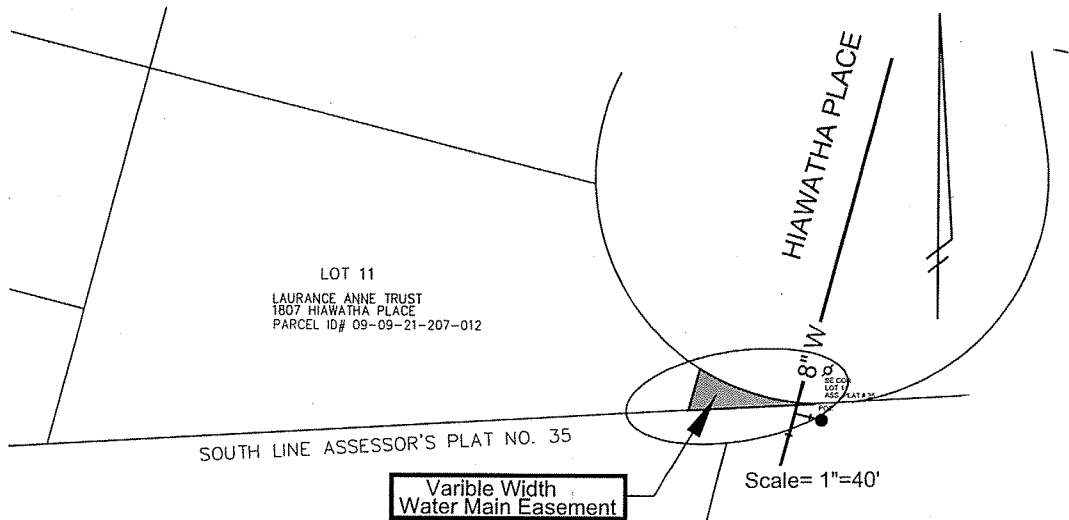


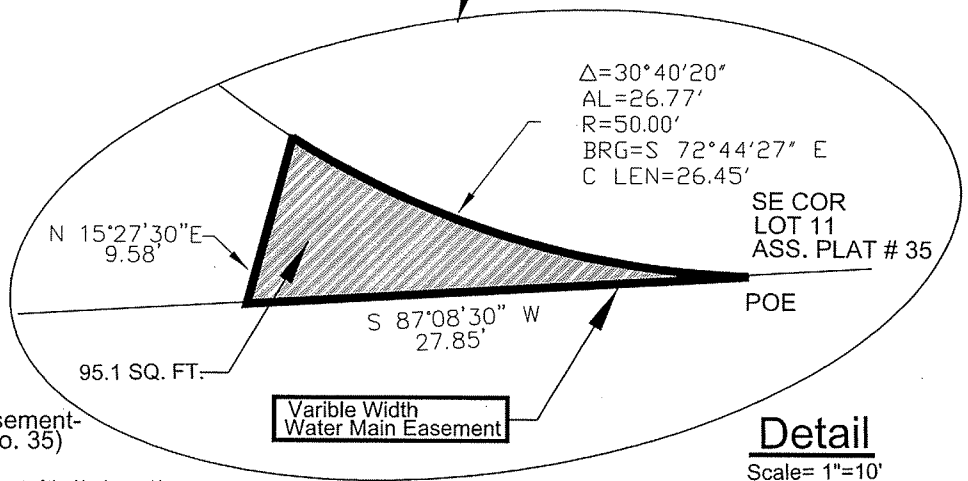
Variable Width Water Main Easement- (Lot 11 of Assessor's Plat No.35)



Variable Width Water Main Easement

Scale= 1"=40'

See Detail



Variable Width Water Main Easement

Detail
Scale= 1"=10'

Variable Width Water Main Easement-
(Lot 11 of Assessor's Plat No. 35)

A variable width water main easement located in part of the Northwest ¼ of section 21, Town 2 South, Range 6 East, in the City of Ann Arbor, Washtenaw County, Michigan, being described as Follows:

BEGINNING at the Southeast corner of Lot 11 of the Assessor's Plat No. 35, as Recorded in Liber 10 of Plats, Page 32, Washtenaw County Records; Thence S 87°08'-30" W 27.85 feet along the Southerly Line of said Assessor's Plat No. 35; Thence N 15°-27'-30" E 9.58 Feet to the Southwesterly Line of the Hiawatha Place Right-of-Way Line; Thence Southeasterly along said Hiawatha Place an Arc Length of 26.77 Feet along a circular curve to the left, having a Radius of 50.00 Feet, a Delta Angle of 30°-40'-20", and a chord of 26.45 Feet, Bearing S 72°-44'-27" E to the Southerly Line of said Assessor's Plat No. 35, and the PLACE OF BEGINNING. Containing 95.1 sq. ft. of Land, More or Less. Said easement being a part of the Northwest ¼ of Section 21, Town 2 South, Range 6 East, in the City of Ann Arbor, Michigan, and a Part of the Following Described Parcel.

Lot 11 of Assessor's Plat No. 35, as Recorded in Liber 10 of Plats, Page 32, Washtenaw County Records.

PUBLIC SERVICES DEPARTMENT			
CITY OF ANN ARBOR			
Variable Width Water Main 1807 Hiawatha Place Lot 11-Assessor's Plat No.35			
DR. BY	BDN	CH. BY	GFD
SCALE	See Above	DATE	3-26-08
DRAWING NO.			2007-058
INCH	0 1		SHEET NO. 1 OF 1