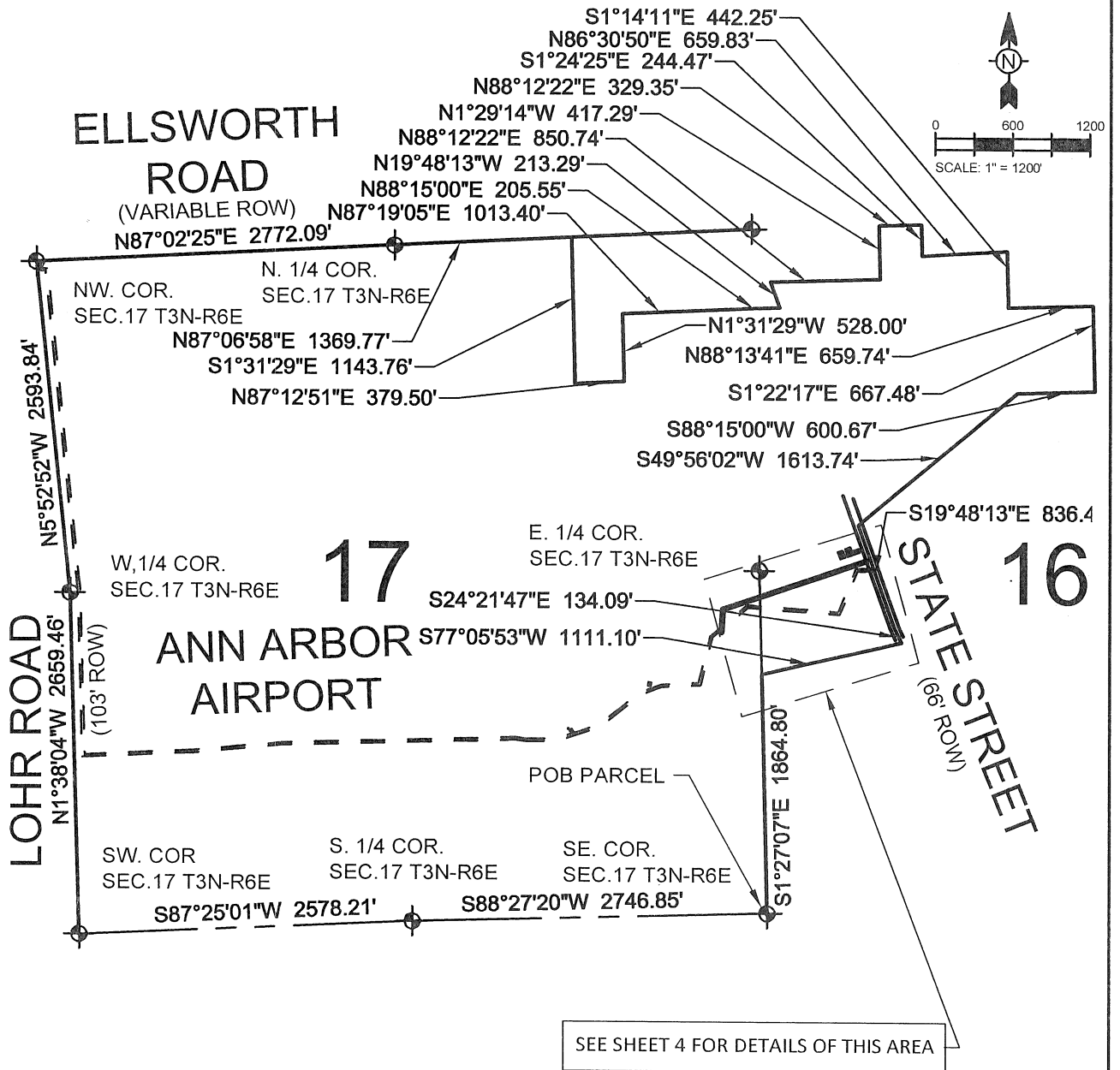


# MAP OF PARENT PARCEL DESCRIPTION

## EXHIBIT "A"



SEE SHEET 4 FOR DETAILS OF THIS AREA

### NOTES:

1. Parent parcel boundary and description (p.2) reference: "Ann Arbor Municipal Airport, Exhibit "A" Property Map" (URS Designers & Consultants, Map #12942351, 3/28/11). URS map is accompanied by a legal description from an unrecorded survey.
2. Parent parcel boundary was analyzed for mathematical stability. Boundary courses common to section lines were compared with recovered, surveyed section corners; field evidence closely matched described courses. However, the entire boundary was not compared with physical evidence.
3. No supplemental research was done to verify property limits or ownership.

5/12/2016 4:30:47 PM - O:\PROJECTS\ANN ARBOR\IER\31537\200-31537-15005\CAD\MODELFILES\XP-EASE2.DWG - FISHER, ERIC



**TETRA TECH**

www.tetratech.com

123 BRIGHTON LAKE RD. SUITE 203  
BRIGHTON, MICHIGAN 48116  
(TEL) 810-225-8422 (FAX) 810-225-8458

LAND IN PITTSFIELD TOWNSHIP, WASHTENAW CO., MICHIGAN

CITY OF ANN ARBOR, MICHIGAN  
STEEERE FARM ENGINE REPLACEMENT PROJECT  
UTILITY EASEMENT EXHIBIT "A"

Project No.: 200-31537-15005

Date: 05-05-2016

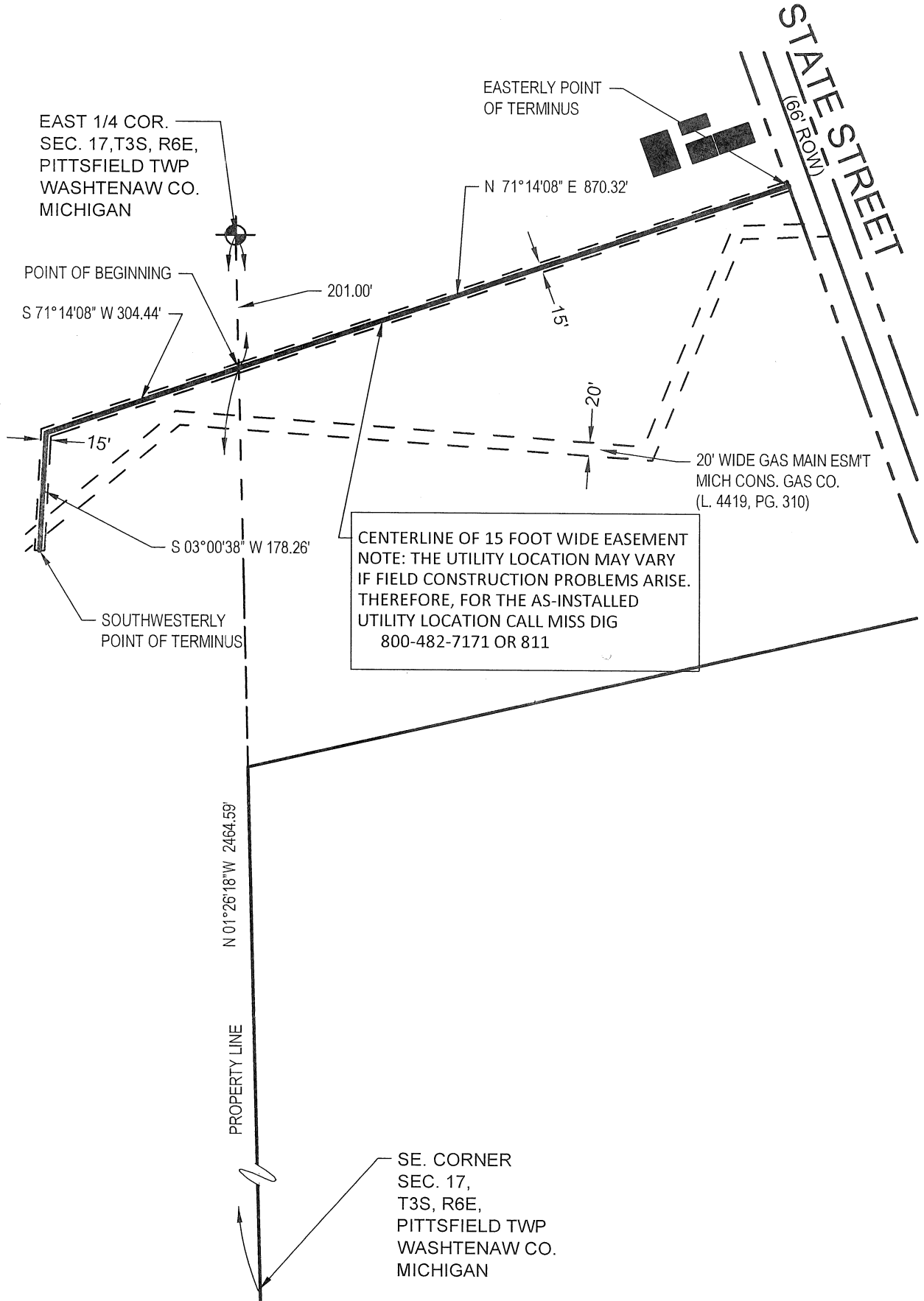
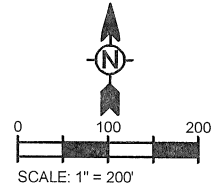
Designed By: F.YOERG

SHEET  
1 OF 4

Copyright: Tetra Tech

Bar Measures 1 inch

# MAP OF EASEMENT EXHIBIT "B"



5/12/2016 4:12:58 PM - O:\PROJECTS\ANN ARBOR\IER\31537\200-31537-15005\CAD\MODELFILS\V-XP-EASE2.DWG - FISHER, ERIC



**TETRA TECH**

www.tetrattech.com

123 BRIGHTON LAKE RD. SUITE 203  
BRIGHTON, MICHIGAN 48116  
(TEL) 810-225-8422 (FAX) 810-225-8458

LAND IN PITTSFIELD TOWNSHIP, WASHTEAW CO., MICHIGAN

CITY OF ANN ARBOR, MICHIGAN  
STEERE FARM ENGINE REPLACEMENT PROJECT

UTILITY EASEMENT EXHIBIT "A"

Project No.: 200-31537-15005

Date: 05-05-2016

Designed By: F.YOERG

SHEET  
**4 OF 4**

Bar Measures 1 inch

Copyright: Tetra Tech