

GENERAL NOTES

A

B

C

D



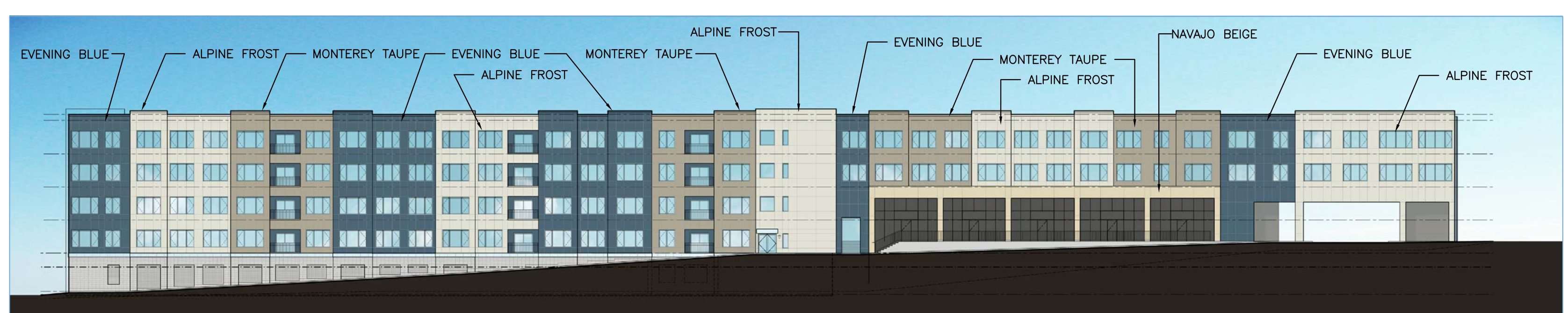
South Elevation / North Elevation (Mirrored) - Residential / Retail

SOUTH ELEVATION - PREVIOUSLY APPROVED



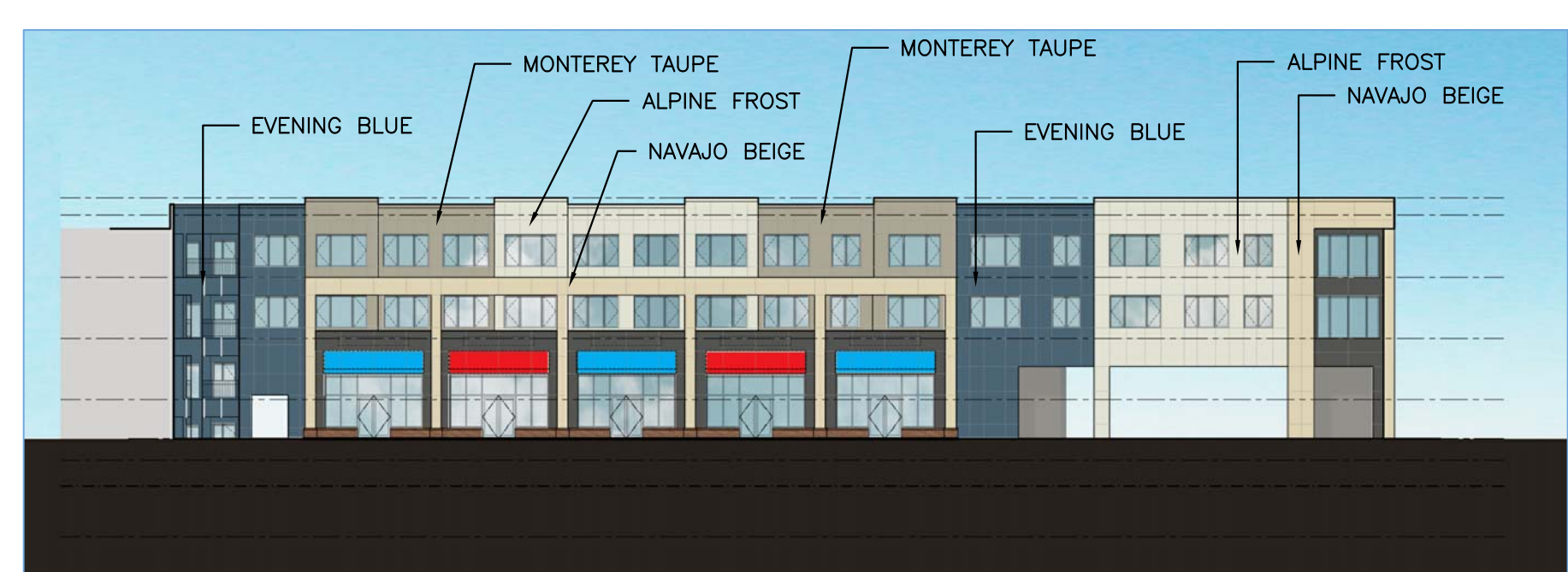
South Elevation / North Elevation (Mirrored) - Retail Plaza

NORTH COURTYARD ELEVATION - PREVIOUSLY APPROVED



SOUTH ELEVATION - PROPOSED REVISION

SOUTH ELEVATION - PROPOSED REVISION



NORTH COURTYARD ELEVATION - PROPOSED REVISION

NORTH COURTYARD ELEVATION - PROPOSED REVISION



NORTH ELEVATION - PREVIOUSLY APPROVED

NORTH ELEVATION - PREVIOUSLY APPROVED



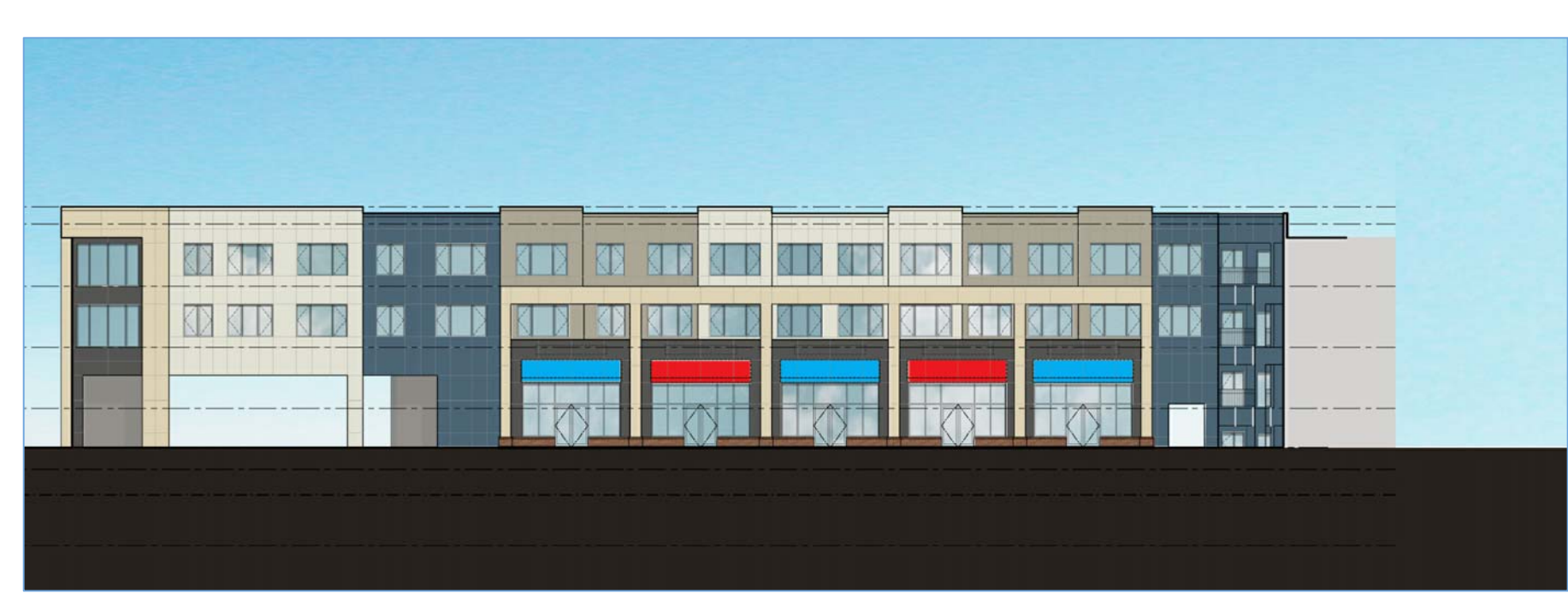
SOUTH COURTYARD ELEVATION - PREVIOUSLY APPROVED

SOUTH COURTYARD ELEVATION - PREVIOUSLY APPROVED



NORTH ELEVATION - PROPOSED REVISION

NORTH ELEVATION - PROPOSED REVISION



SOUTH COURTYARD ELEVATION - PROPOSED REVISION

SOUTH COURTYARD ELEVATION - PROPOSED REVISION

01	ADMINISTRATIVE AMENDMENT	12.20.12
NUMBER	ISSUED FOR	DATE

**BUILT FORM**  
ARCHITECTURE 311 N. Aberdeen St. 200 C  
Chicago, IL 60607

DEVELOPER  
**The Harbor Companies**  
1900 South Telegraph Road  
Bloomfield Hills, Michigan

CIVIL ENGINEER / LANDSCAPE ARCHITECT  
**Nowak & Fraus Engineers**  
46777 Woodward Avenue  
Pontiac, MI

STRUCTURAL ENGINEER  
**Shymanski & Associates, LLC**  
30903 Northwestern Hwy, Suite 300  
Farmington Hills, MI

MECHANICAL - ELECTRICAL - PLUMBING ENGINEER  
**MA Engineering**  
200 E. Brown Street  
Birmingham, MI

PROJECT  
**Packard Square**  
Ann Arbor, Michigan  
SHEET TITLE  
**Colored Elevations**

PROJECT NO. **10-146**  
DATE **12.20.2012**  
**A001**