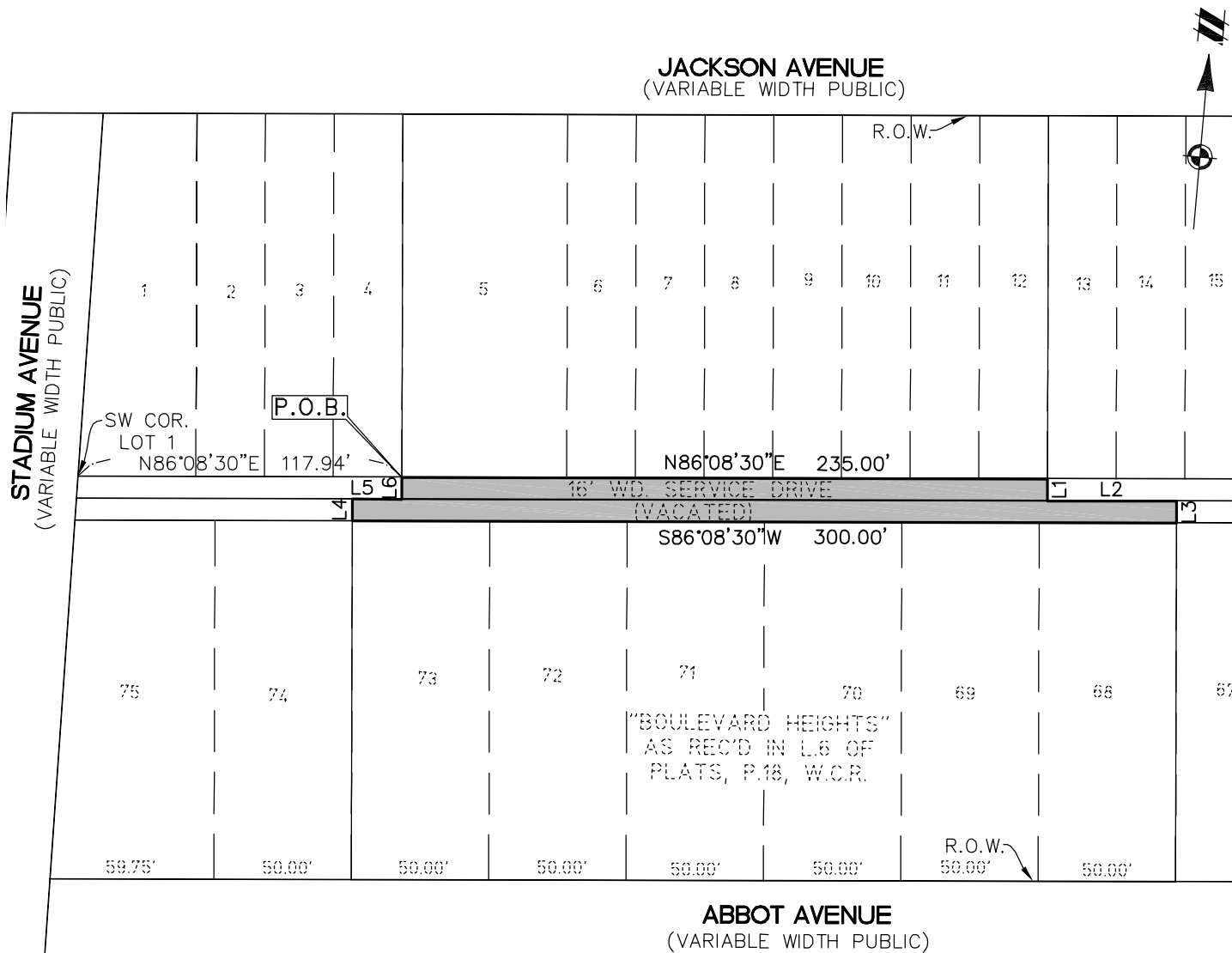


EXHIBIT "B"



LINE TABLE		
LINE	BEARING	LENGTH
L1	S03°51'23"E	8.00'
L2	N86°08'30"E	47.00'
L3	S03°51'23"E	8.00'
L4	N03°51'23"W	8.00'
L5	N86°08'30"E	18.00'
L6	N03°51'23"W	8.00'

LEGEND	
	SECTION CORNER
	P.O.B. PLACE OF BEGINNING
	R.O.W. RIGHT-OF-WAY

DESCRIPTION OF A PORTION OF THE 16 FOOT WIDE VACATED ALLEY:

Commencing at the Southwest corner of Lot 1 of "Boulevard Heights" as recorded in Liber 6 of Plats, Page 16, Washtenaw County Records, Washtenaw County, Michigan; thence N86°08'30"E 117.94 feet along the South line of Lots 1-4, inclusive, of said "Boulevard Heights" and the North line of a vacated service drive (16 feet wide) to the Southeast corner of said Lot 4 for a **PLACE OF BEGINNING**; thence continuing N86°08'30"E 235.00 feet along the South line of Lots 5-12, inclusive, of said "Boulevard Heights" and the North line of said vacated service drive; thence S03°51'23"E 8.00 feet; thence N86°08'30"E 47.00 feet along the centerline of said vacated service drive; thence S03°51'23"E 8.00 feet; thence S86°08'30"W 300.00 feet along the North line of Lots 68-73, inclusive, of said "Boulevard Heights" and the South line of said vacated service drive; thence N03°51'23"W 8.00 feet; thence N86°08'30"E 18.00 feet along the centerline of said vacated service drive; thence N03°51'23"W 8.00 feet to the Place of Beginning.

CLIENT AGREE REALTY CORP.	JOB: 06001194.20	CAD 06001194EA-09
	DR. CAL	CH. BAL
SKETCH & DESCRIPTION OF A PORTION OF THE VACATED 16 FT. WIDE ALLEY LOCATED IN	SHEET 1 OF 1	DATE: 10-06-09
	FILE CODE: EA-00-09	
SECTION 30 TOWN 2 SOUTH, RANGE 6 EAST CITY OF ANN ARBOR WASHTENAW COUNTY	ATWELL-HICKS www.atwell-hicks.com 866 850 4200	
SCALE: 1 INCH = 60 FEET	ARIZONA FLORIDA ILLINOIS MICHIGAN OHIO PENNSYLVANIA TENNESSEE	
	Engineering Surveying Planning Environmental Ecological Water Resources	