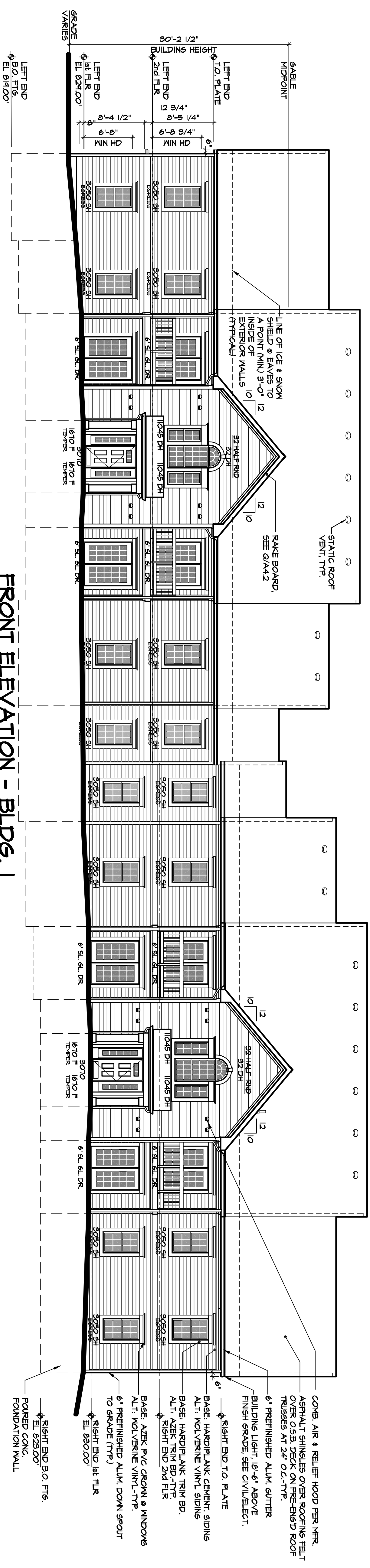
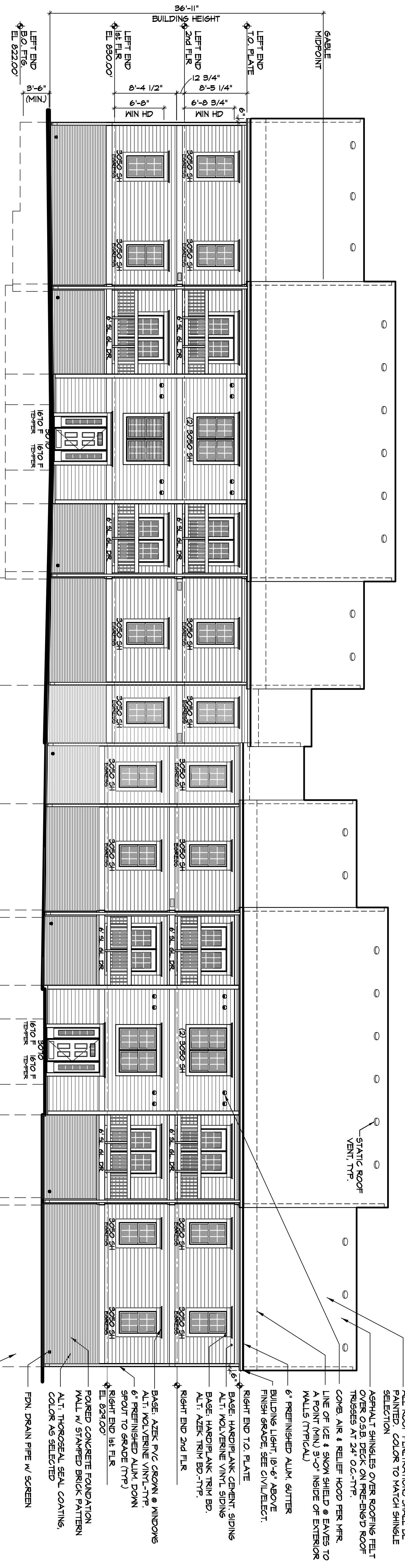


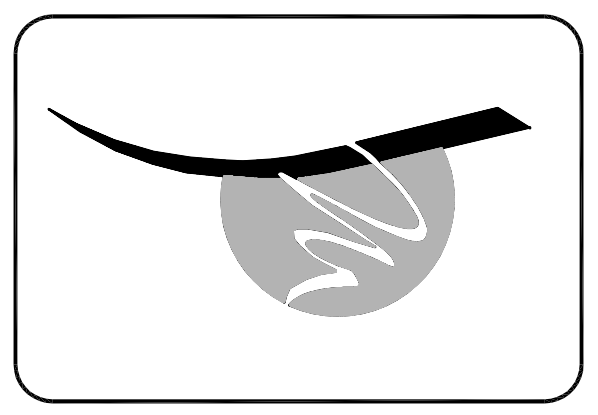
BLDG. #1 - AVG. BLDG. HEIGHT = 30'-10"



FRONT ELEVATION - BLDG. #1
SCALE: 1/8"=1'-0"
RELEV



REAR ELEVATION - BLDG. #1
SCALE: 1/8"=1'-0"
RELEV



© Copyright 2011

Burton Commons II
Front & Rear Elevations
Building 1

J BRADLEY MOORE & ASSOCIATES
4844 Jackson Road, #150 Ann Arbor, MI 48103 (734) 930-1500

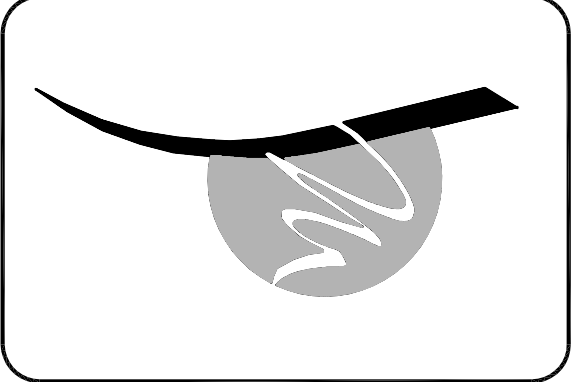
revisions

NO.	DATE	DESCRIPTION

job 211220

drawn/kmk
date 06/10/11

sht
A2.1



© Copyright 2011

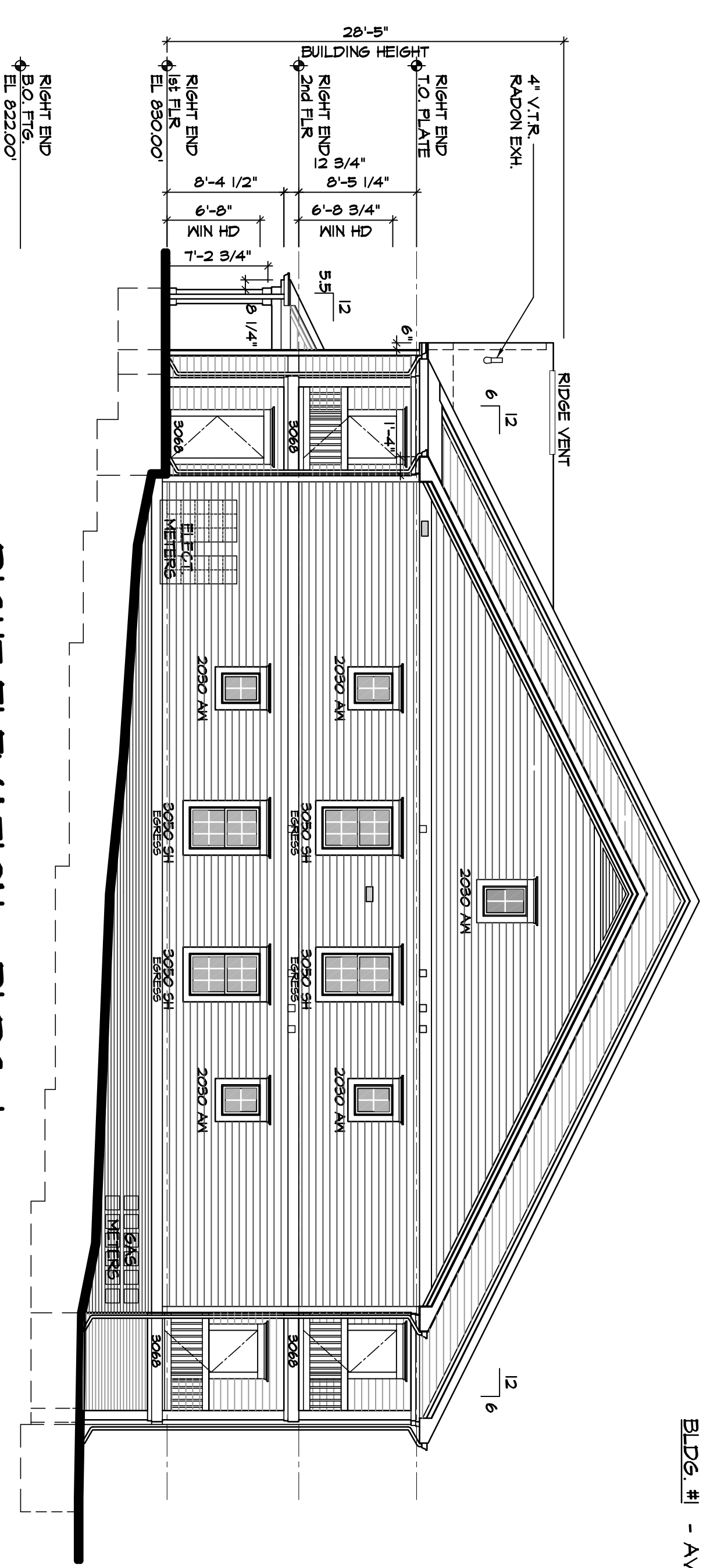
Burton Commons II
Side Elevations
Buildings 1 & 2

J BRADLEY MOORE & ASSOCIATES
4844 Jackson Road, #150 Ann Arbor, MI 48103 (734) 930-1500

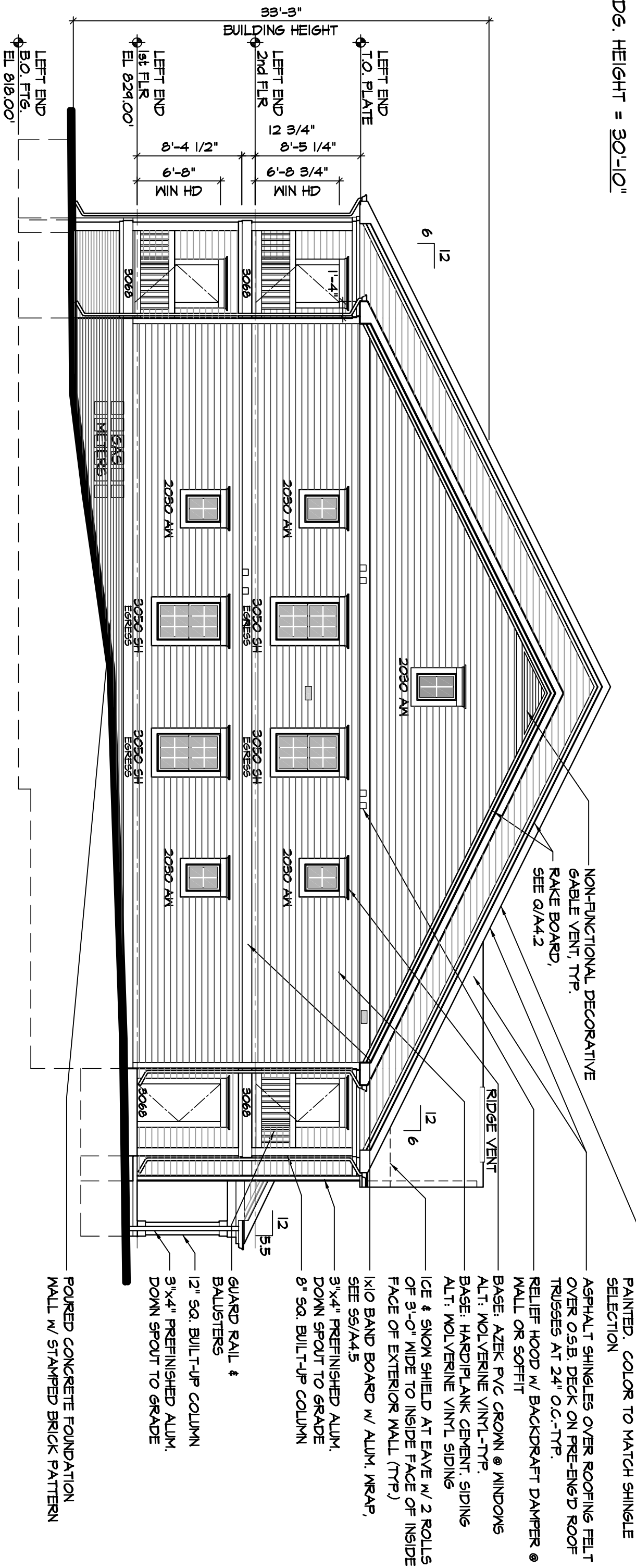
revisions

job 211220

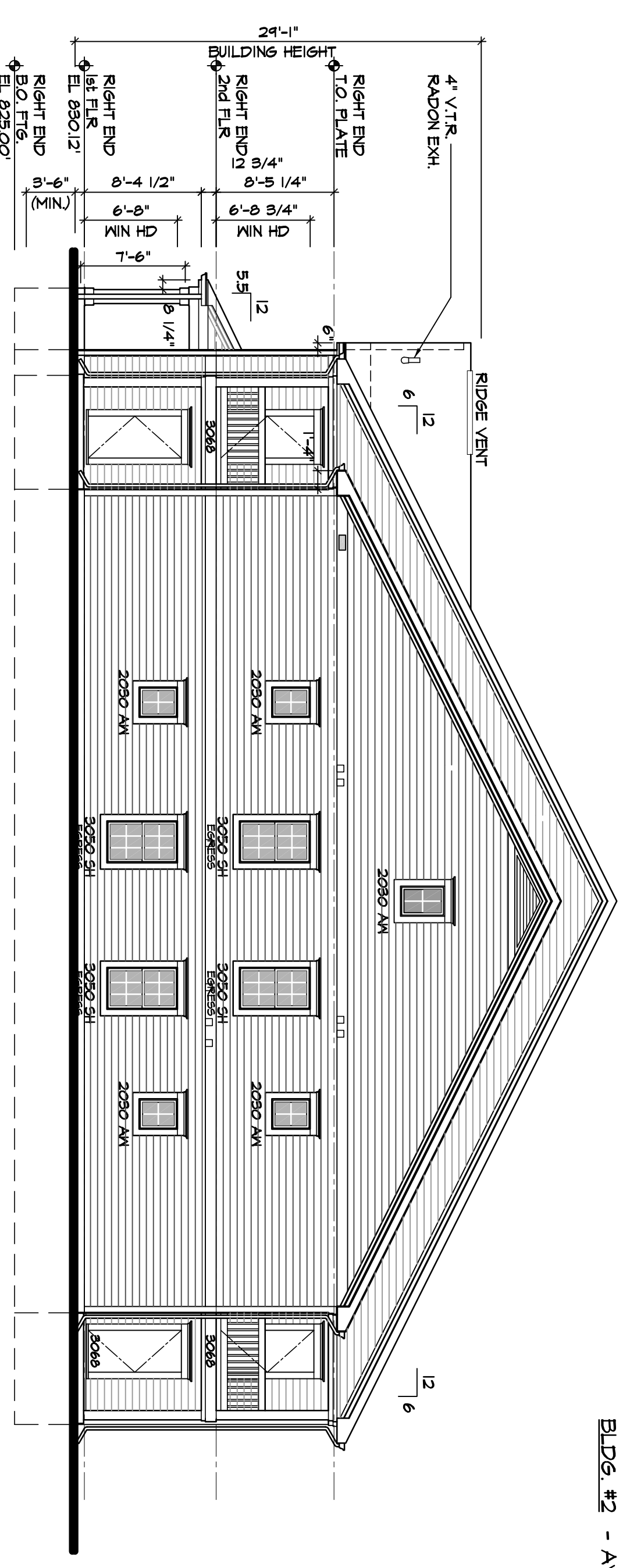
drawn/kmk
date 06.10.11
shl
A2.6



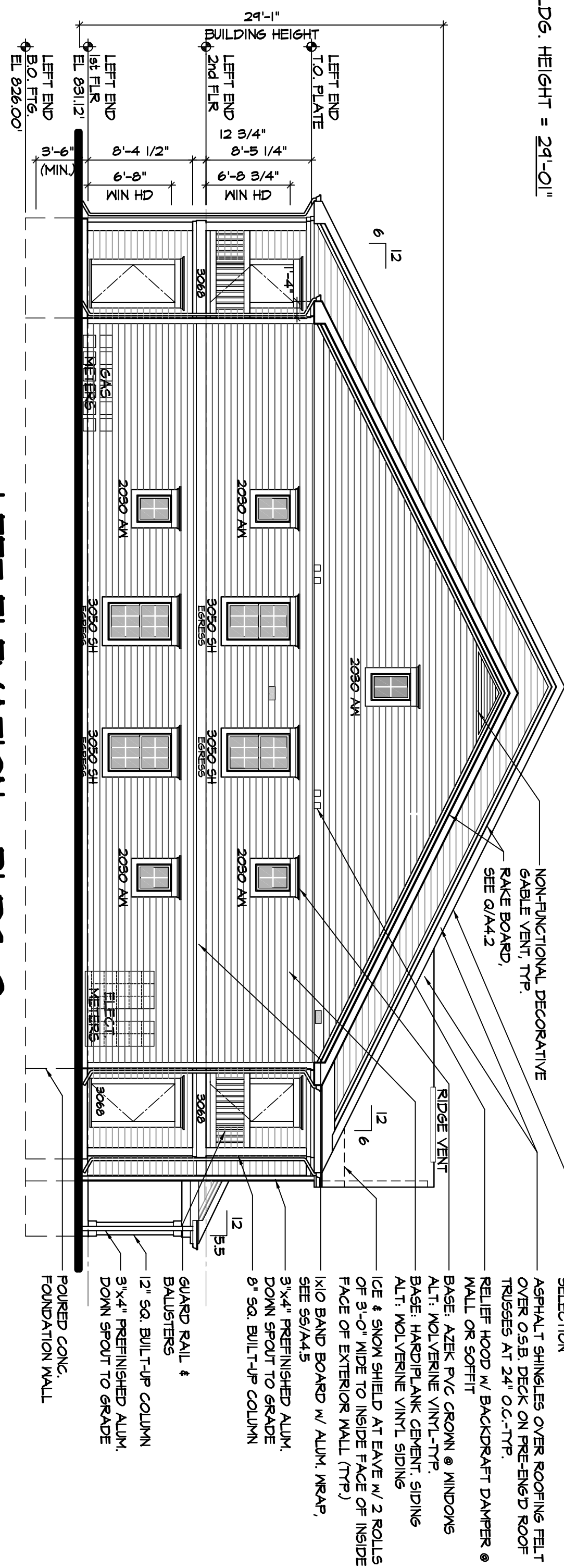
RIGHT ELEVATION - BLDG. 1
SCALE: 1/8"=1'-0"
BELLY



LEFT ELEVATION - BLDG. 1
SCALE: 1/8"=1'-0"
BELLY



RIGHT ELEVATION - BLDG. 2
SCALE: 1/8"=1'-0"
BELLY



LEFT ELEVATION - BLDG. 2
SCALE: 1/8"=1'-0"
BELLY

BLDG. #2 - AVG. BLDG. HEIGHT = 29'-0"

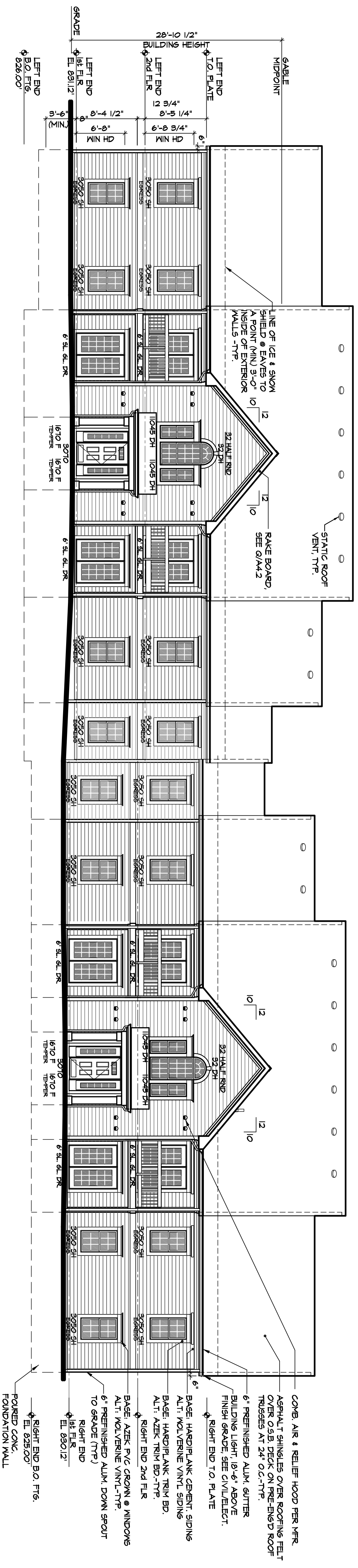
BLDG. #1 - AVG. BLDG. HEIGHT = 30'-10"

- ALL ROOF PENETRATIONS SHALL BE PAINTED. COLOR TO MATCH SHINGLE SELECTION
- ASPHALT SHINGLES OVER ROOFING FELT OVER O.S.B. DECK ON PRE-FINISH ROOF TRUSSES AT 24" O.C.-TYP.
- RELIEF HOOD W/ BACKCRAFT DAWNER @ WALL OR SOFFIT
- BASE: AZEK PVC CROWN @ WINDOWS
- ALT: WOLVERINE VINYL-TYP
- BASE: HANDIPLANK CEMENT SIDING
- ALT: WOLVERINE VINYL SIDING
- ICE & SNOW SHIELD AT EAVE W/ 2 ROLLS OF 3'-0" WIDE TO INSIDE FACE OF INSIDE FACE OF EXTERIOR WALL (TYP)
- 1/4" BAND BOARD W/ ALUM. W/KAAP, SEE 56/A4.5
- 3"x4" FINISHED ALUM. DOWN SPOUT TO GRADE
- 8" SQ. BUILT-UP COLUMN
- GUARD RAIL & BALUSTERS
- 12" SQ. BUILT-UP COLUMN
- 3"x4" FINISHED ALUM. DOWN SPOUT TO GRADE
- FOUNDED CONCR. FOUNDATION WALL

NON-FUNCTIONAL DECORATIVE GABLE VENT, TYP. RAKE BOARD, SEE 01/A4.2

NON-FUNCTIONAL DECORATIVE GABLE VENT, TYP. RAKE BOARD, SEE 01/A4.2

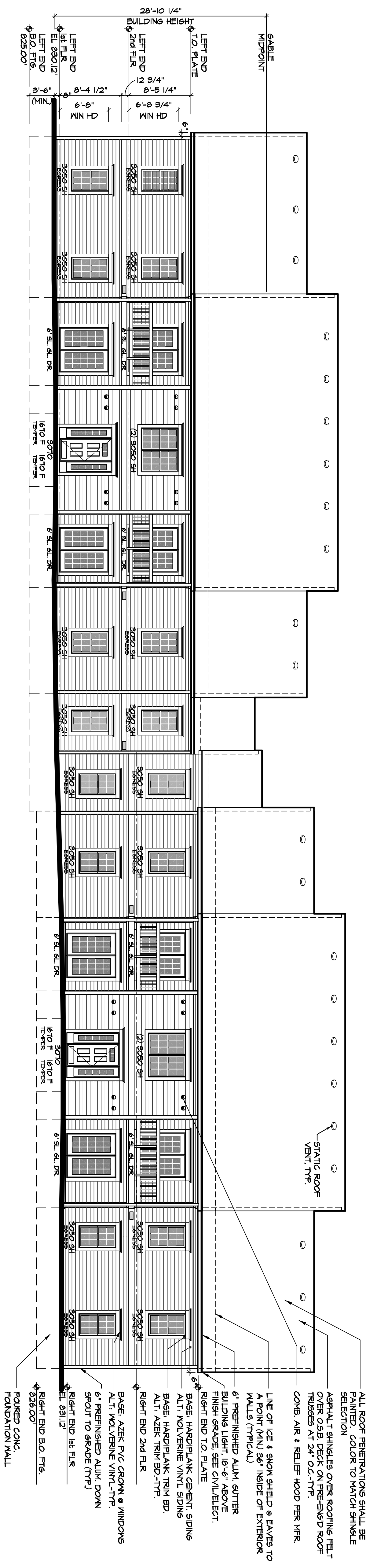
BLDG. #2 - AVG. BLDG. HEIGHT = 24'-0"



FRONT ELEVATION - BLDG. 2

SCALE: 1/8"=1'-0"

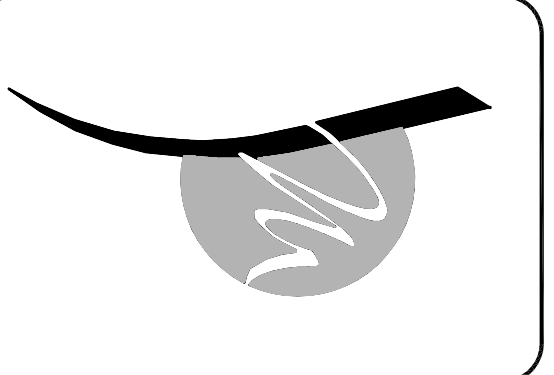
DATE:



REAR ELEVATION - BLDG. 2

SCALE: 1/8"=1'-0"

DATE:



© Copyright 2011

Burton Commons II
Front & Rear Elevations
Building 2

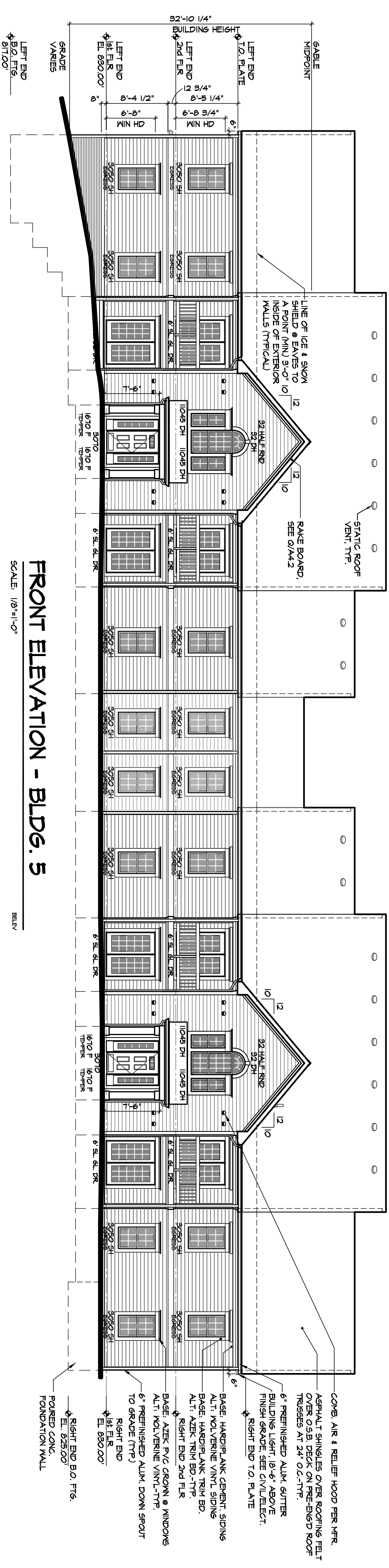
J BRADLEY MOORE & ASSOCIATES
4844 Jackson Road, #150 Ann Arbor, MI 48103 (734) 930-1500

revisions

job 2112220

drawn/kmk
date 06.10.11
sh1
A2.2

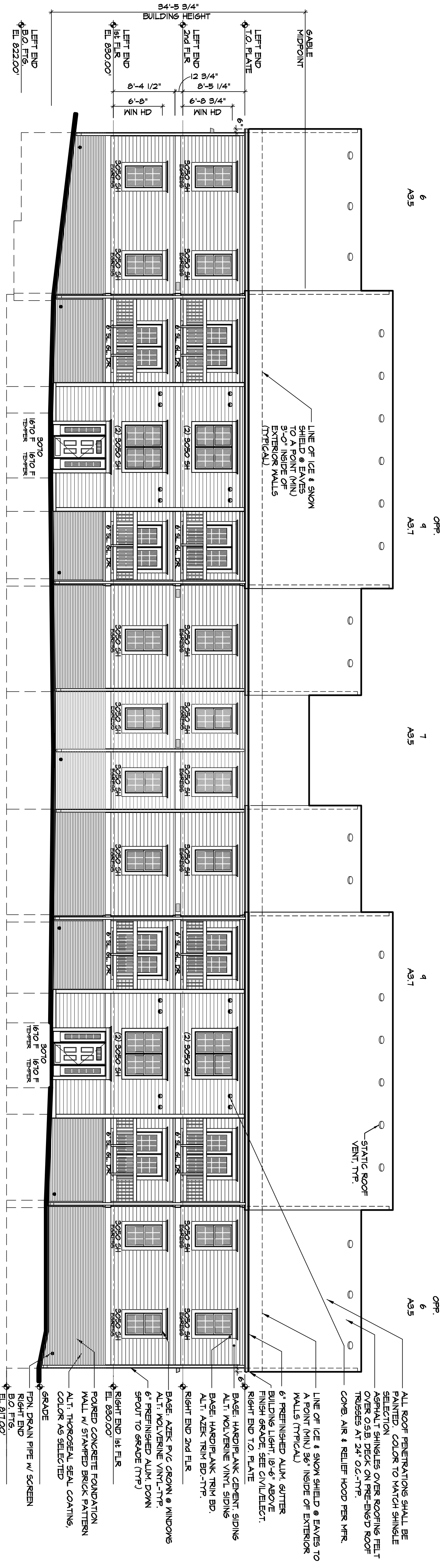
BLDG. #5 - AVG. BLDG. HEIGHT = 32'-10"



FRONT ELEVATION - BLDG. 5

SCALE: 1/8"=1'-0"

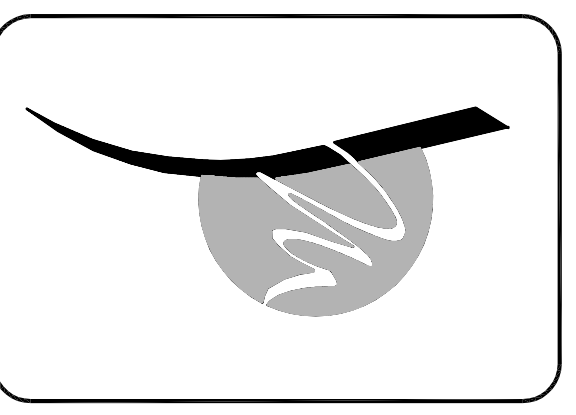
RELV



REAR ELEVATION - BLDG. 5

SCALE: 1/8"=1'-0"

RELV



© Copyright 2011

Burton Commons II
 Front & Rear Elevations
 Building 5

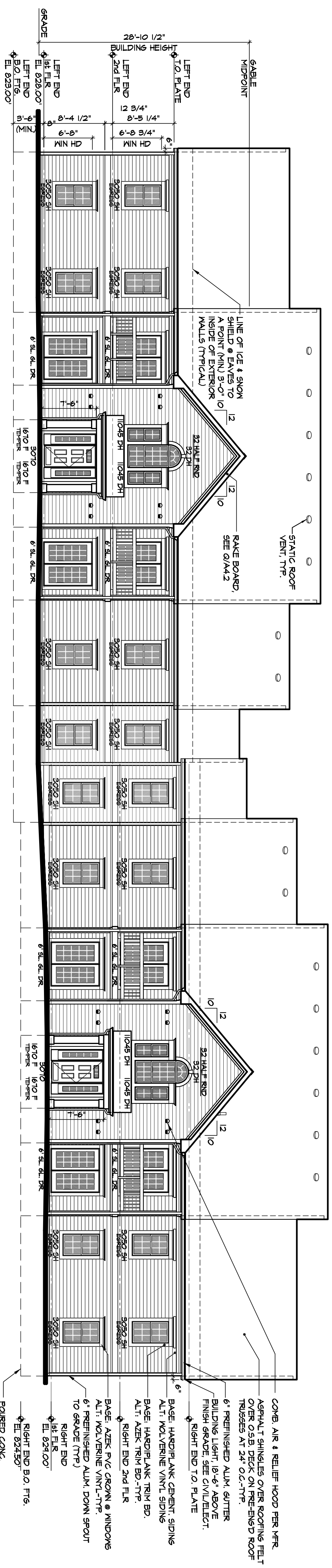
J BRADLEY MOORE & ASSOCIATES
 4844 Jackson Road, #150 Ann Arbor, MI 48103 (734) 930-1500

REVISIONS

job 2112220

drawn/kmk
 date 06/10/11
 sht
 A2.5

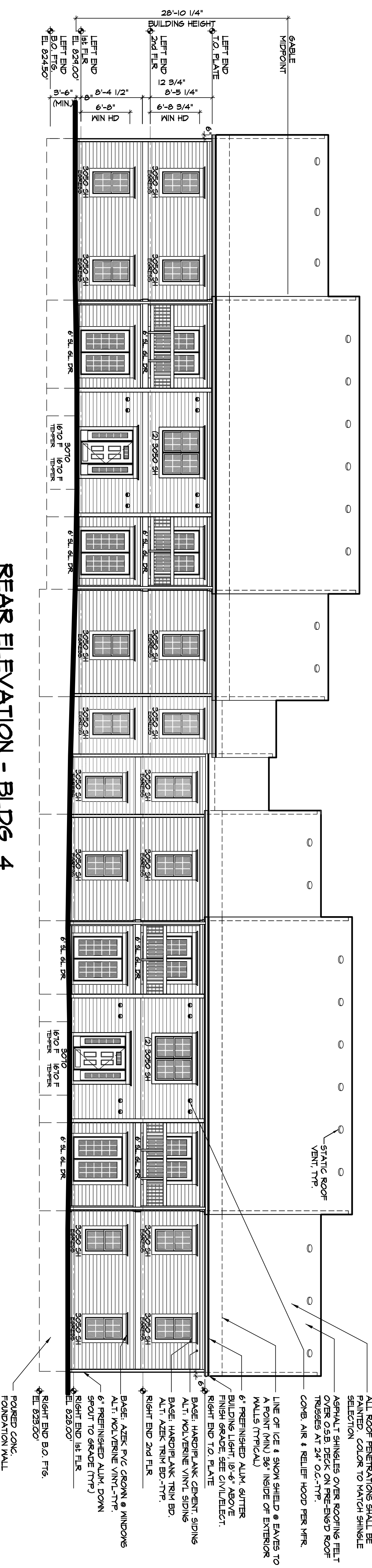
BLDG. #4 - AVG. BLDG. HEIGHT = 24'-0"



FRONT ELEVATION - BLDG. 4

SCALE: 1/8"=1'-0"

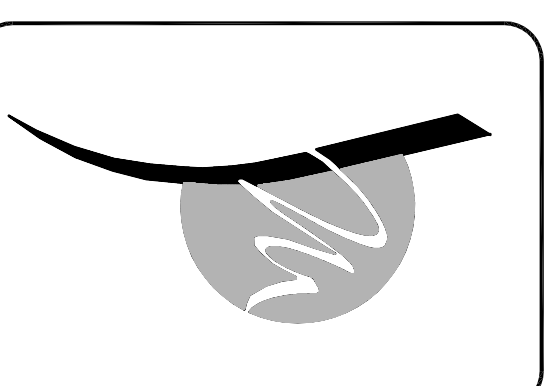
DATE:



REAR ELEVATION - BLDG. 4

SCALE: 1/8"=1'-0"

DATE:



© Copyright 2011

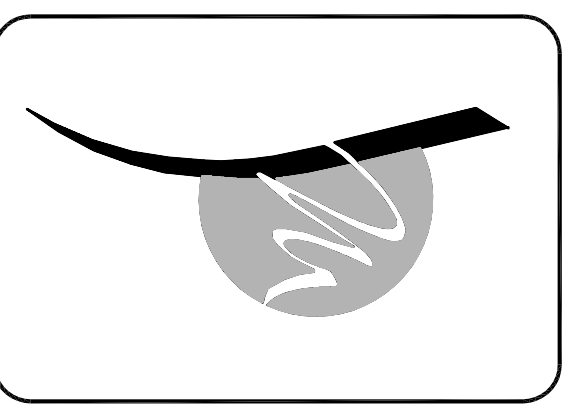
Burton Commons II
Front & Rear Elevations
Building 4

J BRADLEY MOORE & ASSOCIATES
4844 Jackson Road, #150 Ann Arbor, MI 48103 (734) 930-1500

revisions

job 2112220

drawn/kmk
date 06.10.11
shl
A2.4



© Copyright 2011

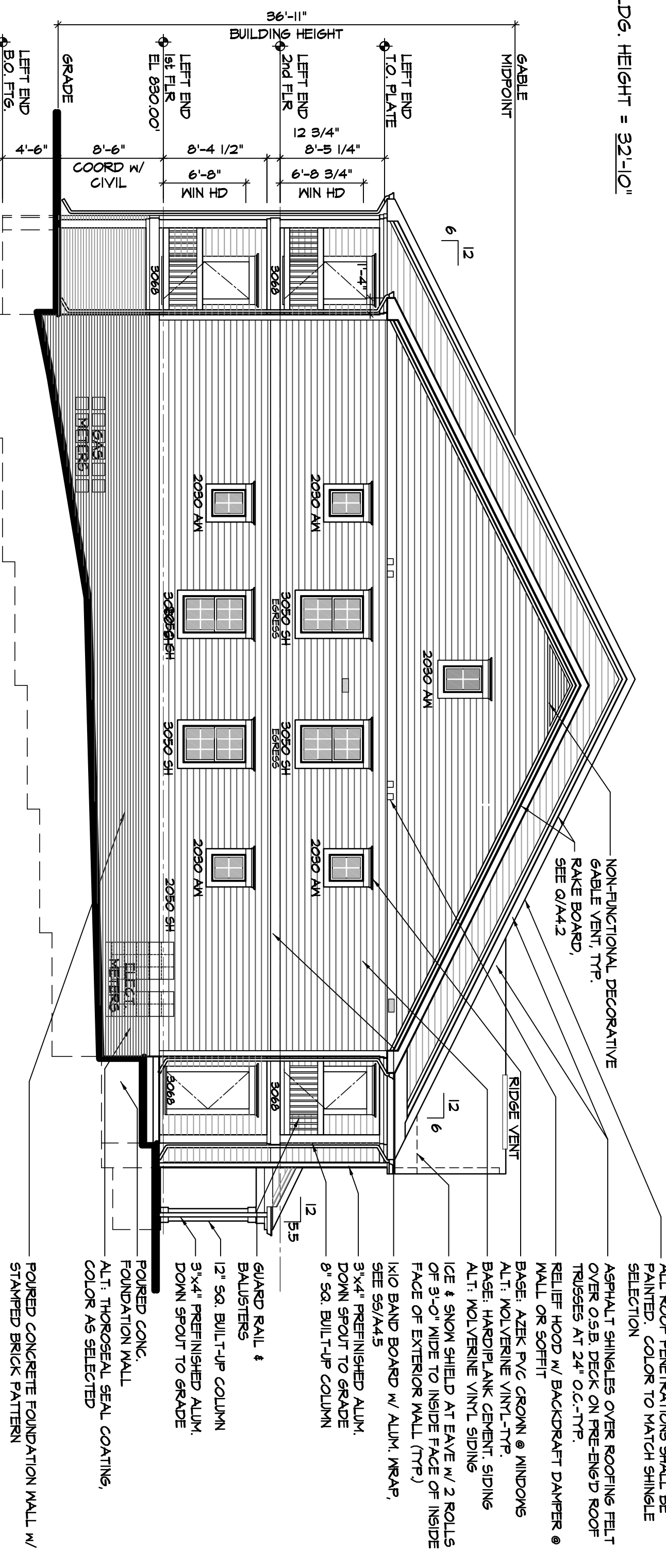
Burton Commons II
 Side Elevations
 Building 5

J BRADLEY MOORE & ASSOCIATES
 4844 Jackson Road, #150 Ann Arbor, MI 48103 (734) 930-1500

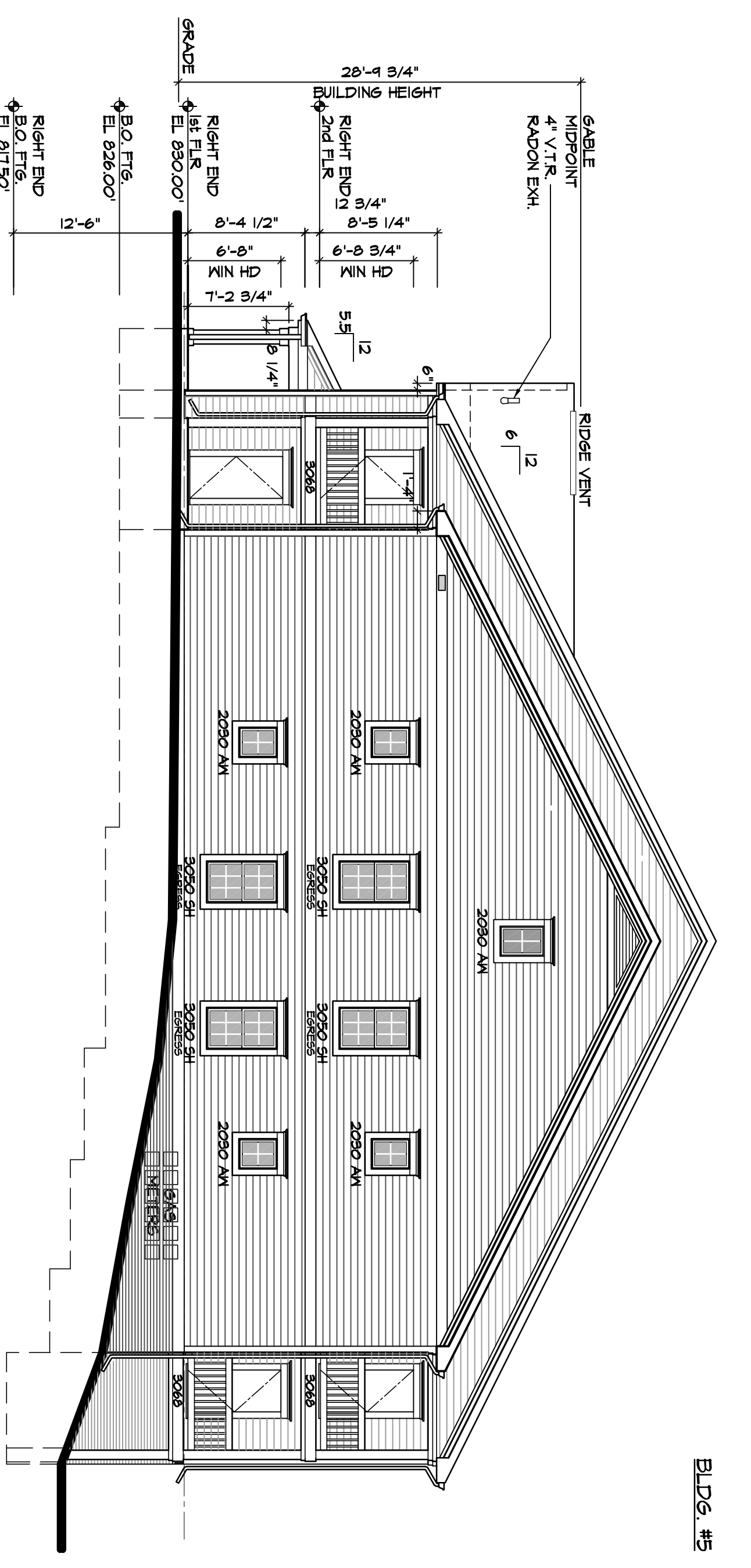
revisions

job 2112220

drawn kkk
 date 06.10.11
 sht
 A2.8



LEFT ELEVATION - BLDG. 5
 SCALE: 1/8"=1'-0"
 BELLY



BLDG. #5 - AVG. BLDG. HEIGHT = 32'-10"