



PENTHOUSE/ROOF
ELEV. = 64'-8" (884'-8")

LEVEL 6 (RL5)
ELEV. = 55'-0" (875'-0")

LEVEL 5 (RL4)
ELEV. = 45'-4" (864'-4")

LEVEL 4 (RL3)
ELEV. = 35'-8" (854'-8")

LEVEL 3 (RL2)
ELEV. = 26'-0" (845'-0")

LEVEL 2 (RL1)
ELEV. = 16'-4" (835'-4")

MEZZANINE
ELEV. = 6'-0" (825'-0")

GROUND FLOOR
ELEV. = 0'-0" (819'-0")
LOWER LEVEL PARKING
ELEV. = -4'-0" (+/- 815'-0")

ELEVATOR OVERRUN
PENTHOUSE TOP OF ELEVATOR
ELEV. = 78'-1" (898'-8")

PENTHOUSE
ROOFTOP TERRACE
WOOD/STEEL PERGOLA
TOP OF PARAPET WALL
ELEV. = 66'-11" (887'-6")

METAL PARAPET WALL/
12" HAND RAIL
METAL BALCONY
STANDING SEAM METAL
PANEL

TOP OF PARAPET WALL
ELEV. = 47'-7" (867'-2")

5'-0" X 6'-0" OPERABLE ALUMINUM
CLAD WOOD WINDOW
8'-2" X 8'-0"
TRIPLE SECTION FRENCH DOOR

MFG. STONE
5'-0" X 8'-0"
FRENCH DOOR

BRICK
GLASS/METAL CANOPY

WOOD/STEEL CANOPY
AUTOMATIC VEHICLE GATE
STONE BASE

Madison Cafe

THE MADISON ON MAIN

600

Madison Cafe

Madison Cafe

Madison Cafe

THE MADISON ON MAIN

CAFE/RETAIL
ENTRY

CAFE/RETAIL SPACE

RESIDENTIAL ENTRY

SERVICE DOORS

ENTRY TO MEZZANINE
LEVEL PARKING

North Elevation
Scale: 3/32" = 1'-0"

0' 2' 4' 8'



0' 2' 4' 8'

East Elevation
Scale: 3/32" = 1'-0"



PENTHOUSE/ROOF
ELEV. = 64'-8" (884'-8")

LEVEL 6 (RL5)
ELEV. = 55'-0" (875'-0")

LEVEL 5 (RL4)
ELEV. = 45'-4" (864'-4")

LEVEL 4 (RL3)
ELEV. = 35'-8" (854'-8")

LEVEL 3 (RL2)
ELEV. = 26'-0" (845'-0")

LEVEL 2 (RL1)
ELEV. = 16'-4" (835'-4")

MEZZANINE
ELEV. = 6'-0" (825'-0")

GROUND FLOOR
ELEV. = 0'-0" (819'-0")

LOWER LEVEL PARKING
ELEV. = -4'-0" (+/- 815'-0")

ELEVATOR OVERRUN
PENTHOUSE

TOP OF ELEVATOR
ELEV. = 78'-1" (898'-8")

PENTHOUSE

ROOFTOP TERRACE

TOP OF PARAPET WALL
ELEV. = 66'-11" (887'-6")

METAL PARAPET WALL/
12" HAND RAIL

STAIRWELL FIXED WINDOW

STANDING SEAM METAL
PANEL

TOP OF PARAPET WALL
ELEV. = 47'-7" (867'-2")

5'-0" X 8'-0"
FRENCH DOOR

METAL RAILING

5'-0" X 6'-0" OPERABLE
ALUMINUM WOOD CLAD
WINDOW

BRICK

MFG. STONE

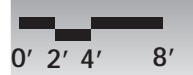
WOOD/STEEL CANOPY

LANDSCAPING

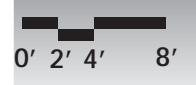
STONE BASE

CAFE/RETAIL
SPACE

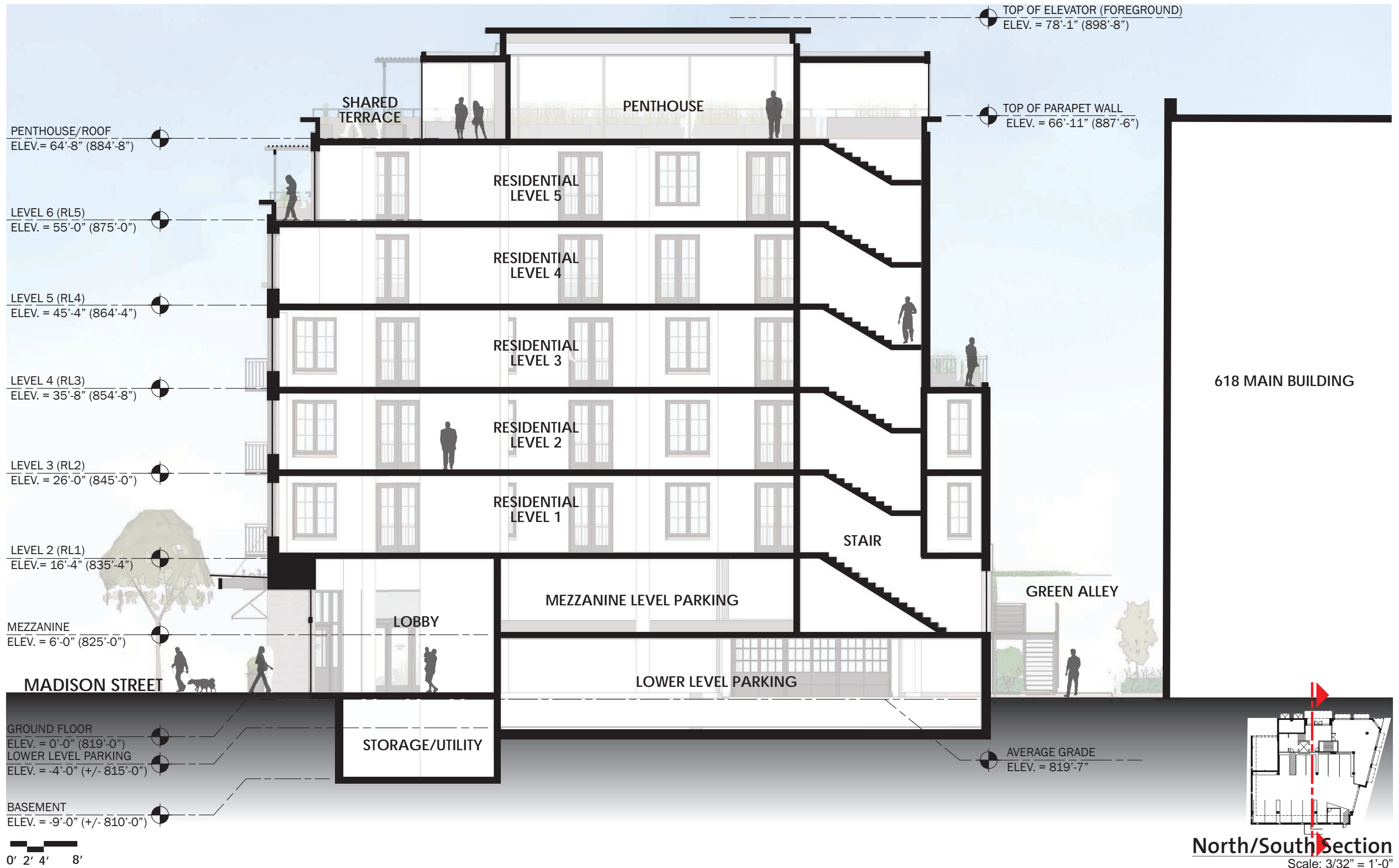
AVERAGE GRADE
ELEV. = 819'-7"

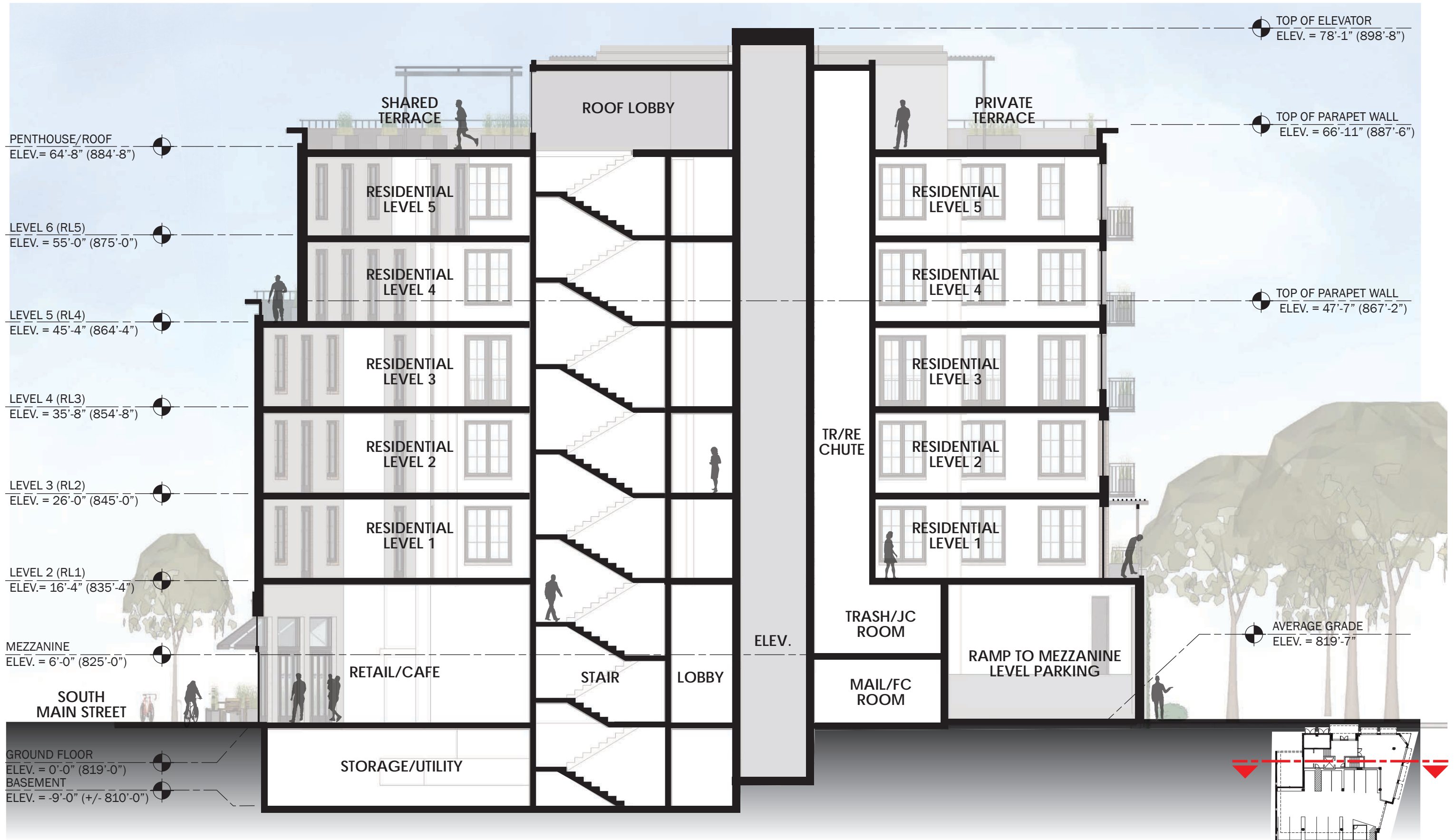


South Elevation
Scale: 3/32" = 1'-0"



West Elevation
Scale: 3/32" = 1'-0"





TOP OF ELEVATOR
ELEV. = 78'-1" (898'-8")

TOP OF PARAPET WALL
ELEV. = 66'-11" (887'-6")

TOP OF PARAPET WALL
ELEV. = 47'-7" (867'-2")

AVERAGE GRADE
ELEV. = 819'-7"

PENTHOUSE/ROOF
ELEV. = 64'-8" (884'-8")

LEVEL 6 (RL5)
ELEV. = 55'-0" (875'-0")

LEVEL 5 (RL4)
ELEV. = 45'-4" (864'-4")

LEVEL 4 (RL3)
ELEV. = 35'-8" (854'-8")

LEVEL 3 (RL2)
ELEV. = 26'-0" (845'-0")

LEVEL 2 (RL1)
ELEV. = 16'-4" (835'-4")

MEZZANINE
ELEV. = 6'-0" (825'-0")

GROUND FLOOR
ELEV. = 0'-0" (819'-0")

BASEMENT
ELEV. = -9'-0" (+/- 810'-0")

0' 2' 4' 8'

East/West Section
Scale: 3/32" = 1'-0"